



CITY OF
ONTARIO
PLANNING DEPARTMENT

303 East B Street
Ontario CA 91764

Residential

Drought Tolerant Landscape Information and Guidelines

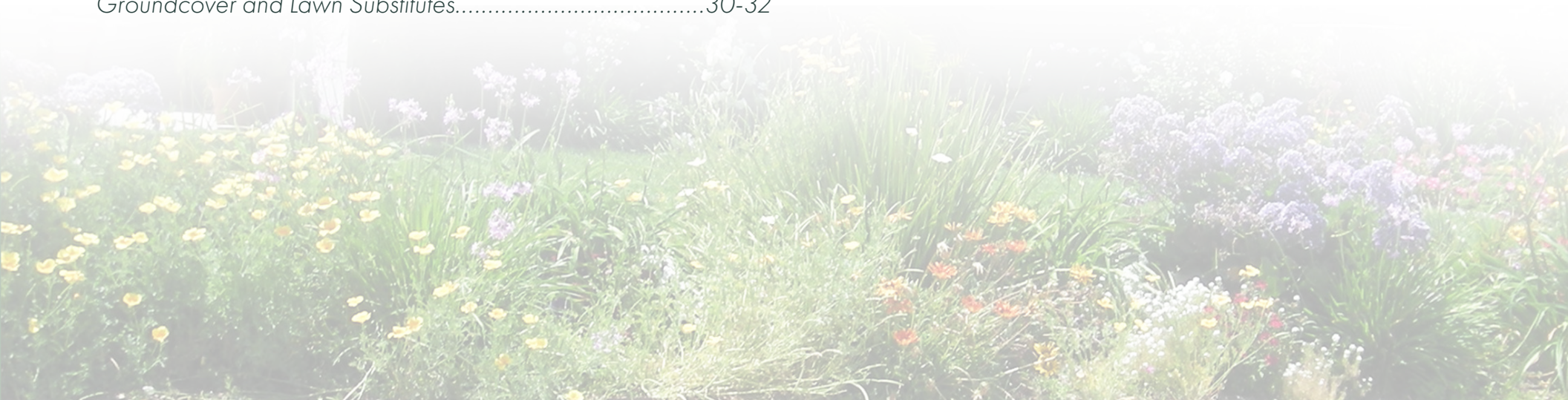
Ontario Landscape Planning

Contact us at (909) 395-2615

<https://www.ontarioca.gov/Planning/Landscape>

TABLE OF CONTENTS

Introduction.....	1-4
Helpful Tips.....	1
Tree Benefits.....	2
City Landscape Codes and Ordinances.....	3
Summary of Sample Garden Planting Palettes.....	4
Sample Garden Planting Palettes.....	5-25
Woodland Sample Garden.....	5-7
Traditional Sample Garden.....	8-10
European Sample Garden.....	11-13
Mediterranean Sample Garden.....	14-16
Spanish Sample Garden.....	17-19
California Native Sample Garden.....	20-22
Meadow Sample Garden.....	23-25
Ontario Climate and Soils Information.....	26
Plant Recommendations Appropriate for Ontario.....	27-32
Medium to Large Trees.....	27
Small Accent Trees.....	28
Shrubs.....	29
Groundcover and Lawn Substitutes.....	30-32



INTRODUCTION

A beautifully landscaped front yard will make your home look great, raise property values, reduce cooling costs in the summertime, filter rainwater, and control runoff. Selecting the right plants and irrigation system can reduce your water bill by as much as 50%. These guidelines have been developed as a simple user guide incorporating drought tolerant landscape materials, tips, and sample plans. The recommendations and palettes can be used as a starting point and can be added to over time.

CONSIDERATIONS:

- Select low-water or 'California-friendly' plants adapted to our dry climate. Planting drought-tolerant plant material reduces the amount of water required and ensures long-term survival in the harshest dry seasons.
- Plant trees on your home's south and west sides to shade and cool your house and driveway and reduce air conditioning and electricity costs.
- Reduce the lawn area. Reducing the lawn area or using a lawn substitute will reduce water use, give your home a new look, and avoid the maintenance of mowing, edging, and fertilizing.
- Use water-efficient irrigation systems. Less wasteful drip irrigation or rotary spray heads use less water and less waste by putting the water right to the root zone instead of running off into the street or sidewalk.
- Change your watering habits. Plants require more water when first planted to grow and spread their roots. After the first few seasons, you can reduce watering as the plants become established.
- Add a 2-3" layer of shredded bark mulch between plants to shade the soil and slow down evaporation. Wood mulch also nourishes the soil and feeds the plants.
- Avoid overcrowding or underplanting, and space plant material at full on-center spacing. Appropriate spacing allows plants to mature and fill their intended growth habit.

These guidelines intend to provide information that will assist homeowners and HOAs in maintaining viable, healthy landscapes that bring value to their properties and the community. You can use these simple steps and tips to change your yard to a beautiful and low-water using landscape. The following pages include sample plans and palettes with sizes and brief descriptions, a street view, and an example of the design in plan view.

TREE BENEFITS

Trees are an important part of any community. Trees produce oxygen, absorb pollution, filter dust, and slow stormwater runoff, which helps infiltrate and recharge groundwater. Trees shade and cool the air, reducing the need for and costs of air conditioning when planted near buildings. Bare branches of deciduous trees allow sunlight to warm the air. The flowers and seeds from trees support birds and other beneficial wildlife.

PROTECT YOUR TREES AND BEAUTIFY YOUR PROPERTY BY CARING FOR TREES IN THE FOLLOWING WAYS:

- Plant deciduous trees on the south and west sides to receive warming sunlight though bare branched in the winter. Plant evergreen trees on the north and east sides of buildings to protect from winds.
- Locate trees at least 5' from paving or walls and 10' away from buildings, water, sewer lines, or overhead utilities; add more clearance for larger trees.
- Do not purchase or plant trees with damaged bark, visible insects, disease, or poor branch formation. Look for a strong central leader (the main trunk) and side branches that are no greater than 2/3 the size of the trunk.
- Plant new trees so that the top of the rootball and trunk flare is above the soil by 2".
- Build a watering basin about 3" high and 36" wide around a newly planted tree and water deeply to encourage proper root growth. Do not allow lawn in basin to grow within the basin to protect trees from lawn equipment damage.
- Protect new trees by loosely securing their trunks with flexible tree ties attached to 2-8' long stakes set outside of the rootball 2-3' deep. Remove stakes and ties when the tree is strong enough to withstand strong wind, usually about two years.
- Spread 1" layer of shredded bark mulch around the base of trees to conserve water and reduce competition from weeds and grass. Keep mulch 12" away from the trunk.
- Provide automatic irrigation to new trees, so they receive daily water for 2 weeks, every other day for 2 months, then weekly until established (when yearly growth becomes consistent).
- Turn off irrigation if the soil is saturated or during rainy weather. Remember to turn it back on.
- Never prune more than 25% of a tree's living foliage during any one year.
- NEVER EVER top a tree. It damages and disfigures the tree causing serious problems later.
- Utilize the services of professionally trained individuals such as a Certified Arborist or Certified Landscape Professional for tree care.
- Trees within the Parkway - Call the Public Works Agency - Parks and Street Maintenance, (909) 395-2600 if you have questions or concerns regarding Street Trees.
- For HOA communities, contact the association for questions.

CITY LANDSCAPE CODES AND ORDINANCES

Below is a list of applicable City codes and ordinances that apply to front yard landscape areas and parkways. For HOA communities, always contact the association before beginning any work on your home.

CITY OF ONTARIO DEVELOPMENT CODE – Chapter 6

- A maximum of 45 percent of the front yard of traditional single-family lots, including the street side yard area of corner lots, that is open to public view may be comprised of hardscape materials, including, but not limited to, paved porches, patios, courtyards, walkways, and driveways, and areas of gravel and/or decomposed granite. (Typically, the driveway, porch, and walkways cover about 45% of the front yard)
- Landscaped areas shall be comprised of living plant materials planted at a spacing no greater than the mature plant diameter. Non-living ornamental features (e.g., boulders, dry stream beds, gravel, etc.) may comprise a maximum of 5 percent of a landscaped area and shall be of a permeable material.
- All areas of a parkway that are not devoted to sidewalks shall be landscaped, irrigated, and permanently maintained pursuant to City standards.*

CITY OF ONTARIO MUNICIPAL CODE – Title 7 Chapter 3*

- Except as otherwise provided, every owner, occupant, or person having charge of property shall install, maintain and use as frequently as necessary an irrigation sprinkler system and shall make every reasonable effort to maintain the abutting parkway in a safe and neat condition devoid of debris, bare dirt, dead, dying or uncultivated vegetation, obstructions, structures, excavations, or other significant deviations from a grade of one-fourth (1/4) inch per foot from the top of the curb to the right-of-way boundary.
- The planting and removal of all trees within parkway areas shall be subject to approval by a permit from the City and shall conform to the requirements of the Master Plan of Parkway Trees. No vegetation shall be planted, cultivated, or allowed to exist within any right-of-way which produces thorns, spines, or any form of fruit or other growth which may constitute a hazard or grievous nuisance.
- Any ground cover or shrubbery cultivated in a parkway area shall not be permitted to grow above eighteen (18) inches in height or be permitted to spread over the adjoining pavement, curb, or sidewalk.
- It shall be the responsibility of the owner, occupant, or person having charge or control of property to plant grass and/or groundcover, as well as to sufficiently water, trim, and otherwise maintain all vegetation within the abutting parkway, including trimming of trees to provide a minimum clearance of eight (8) feet from grade. The City shall be responsible for all divider-median parkway maintenance, for all major pruning or other tree surgery, and for all pruning of parkway trees which cannot be pruned from the ground.

***Parkways in HOA Communities are maintained, planted, and irrigated by the association. In all other parkways, the trees are pruned and maintained by the City; contact Public Works for tree maintenance and concerns at (909) 395-2600. The landscape and irrigation are the responsibility of the homeowner.**

SUMMARY OF SAMPLE GARDEN PLANTING PALETTES

Each sample garden includes a street view, a landscape palette, and a site plan to understand the layout. The landscape palettes incorporate adaptive plant material appropriate to the City of Ontario and Inland Valley. The recommendations are not necessarily native to the regions mentioned but will provide an overall aesthetic while considering the soils and climate found in Ontario.

Woodland Garden

- Incorporates an upper canopy of large shade trees, followed by smaller midstory accent trees and large shrubs. Use drought-tolerant shrubs and groundcovers to create layers of textures and colors.

Traditional Garden

- Includes hardy, drought-tolerant shrubs and groundcovers that can be hedged for a formal look or left natural for more of an informal look. Groundcovers and accents provide pops of color throughout the year, as well as textures for visual interest.

European Garden

- Includes accent trees, shrubs, and groundcovers that provide a lush green garden and showy flowers. This type of garden can be accomplished by incorporating California-friendly and drought-tolerant plant material while still being Waterwise.

Mediterranean Garden

- Combines low maintenance, fragrant, and low water use plants. Plantings combine relaxed materials with formal accents. This garden will thrive in the summer heat and aridity that the Inland Valley experiences.

Spanish Garden

- Plant materials include citrus, succulents, and flowering and fragrant plant material. For additional accents, consider pots, paving materials, and recirculating fountains. This garden will thrive in the summer heat and aridity that the Inland Valley experiences.

California Native Garden

- Plant materials include California native plants that are easy to maintain, long lived, and provide interest throughout the year. Colors, fragrance, and texture will provide pollination spaces for habitat such as hummingbirds, bees, and butterflies. The California garden incorporates shrubs and groundcover that are more wild and rangy in nature.

Meadow Garden

- This garden will take more work than most to keep it from looking untamed, but regular maintenance can create an artistry of colors and textures. Low-water use grasses are intermixed with trees and shrubs to develop plant diversity and a more relaxed design. They can be integrated with groundcovers to give the appearance of a wild meadow.

Additional Plant Materials Recommended for Ontario

- Plant suggestions that include additional drought-tolerant trees, shrubs, and plant material appropriate for Ontario's Climate and soils. Any of these materials can be replaced in the palettes provided.



Strawberry Tree

Arbutus unedo
Small Accent Tree

Southern Live Oak

Quercus virginiana
Medium to large tree

Carolina Laurel Cherry

Prunus caroliniana
Foundation Shrub

Myoporum

Myoporum p. 'Putah Creek'
Groundcover

Salvia Bee's Bliss

Salvia 'Bee's Bliss'
Small Accent Shrub

Coffeeberry 'Eve Case'

Rhamnus californica
Medium Shrub

Woodland Sample Garden

Street View



Southern Live Oak

Quercus virginiana

Tree Height: 30' | Canopy Width: 30'

Broad canopy evergreen tree with smooth-edged, oval leaves that are shiny dark green. It does well in hot interior climates.



Coffeeberry 'Eve Case'

Rhamnus californica

Medium Shrub | 4'-6' tall x wide

Compact evergreen shrub with reddish stems and inconspicuous greenish-yellow flowers that are followed by showy berries.



Strawberry Tree

Arbutus unedo

Tree Height: 25' | Canopy Width: 25'

A broad-leaved evergreen tree with ornamental bark, urn-shaped flowers, and edible fruit. Plant in well-drained soils.

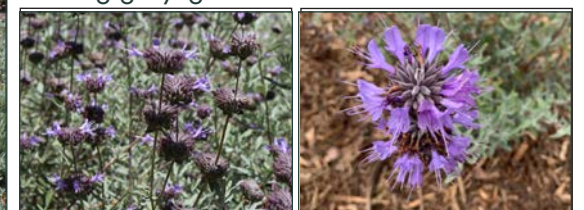


Salvia Bee's Bliss

Salvia 'Bee's Bliss'

Small Shrub/Accent | 1 1/2' tall x 4' wide

Whorled spikes of lavender-blue flowers from spring into summer. Narrow, soft-looking gray-green leaves.



Carolina Laurel Cherry

Prunus caroliniana

Foundation Shrub | 3'-4' tall x wide

An upright shrub with small, fragrant creamy white flowers that blooms in late winter to midspring.



Myoporum

Myoporum p. 'Putha Creek'

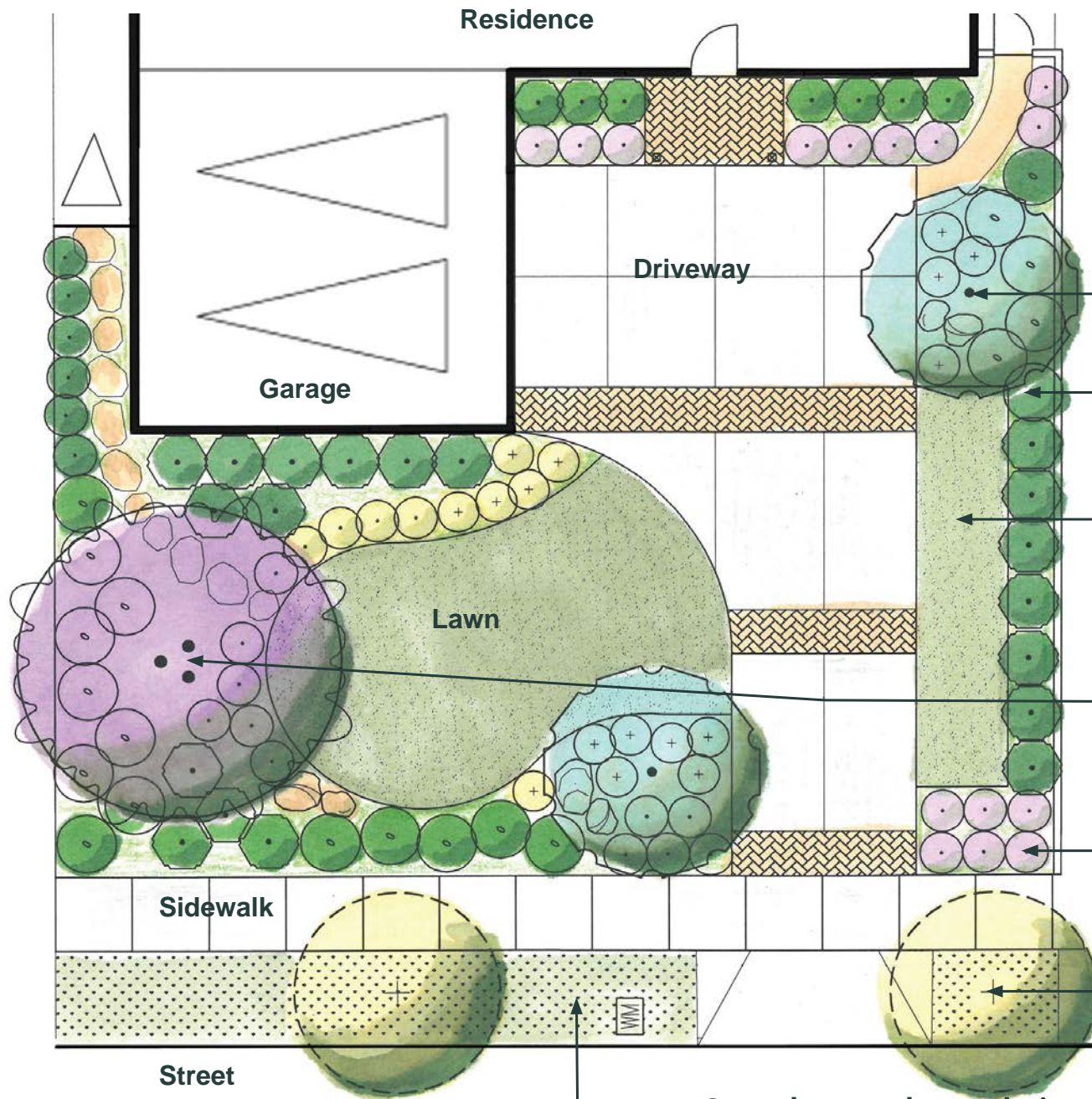
Groundcover | 1'-2' tall x 6' wide

Dense groundcover of light green leaves with tiny white flowers in the summer followed by purple fruit.



Woodland Sample Garden

Plant Palette



Woodland Garden Palette:
Incorporates an upper canopy of large shade trees, followed by smaller midstory accent trees and large shrubs. Use drought-tolerant shrubs and groundcovers to create layers of textures and colors.

Small accent tree

Medium Shrubs

Evergreen 3' - 4'

Low water use groundcovers or living turf (maximum 25%)

Medium to large tree

Consider shade pattern, keep minimum 10' from utility lines and foundations for root

Small shrubs or perennials

Flowers or striking foliage for accents

City of Ontario Street Trees

Groundcover or lawn substitute (maximum 18") in parkways/

*Parkways will be the responsibility of the HOA if in an HOA maintained community. In all other parkways, the trees are pruned and maintained by the City, and the landscape and irrigation are the homeowner's responsibility.

Woodland Sample Garden

Plan View Example



Little John
Callistemon 'Little John'
Medium Shrub

Dwarf Myrtle
Myrtus c. 'Compacta'
Foundation Shrub

Bay Laurel Saratoga
Laurus n. 'Saratoga'
Front Yard Tree

Silver Streak Flax
Dianella 'Silver Streak'
Small Accent Shrub

White Lantana
Lantana m. 'Alba'
Groundcover

Traditional Sample Garden
Street View Example



Coast Live Oak

Quercus agrifolia

Tree Height: 40'-70' | Canopy Width: 20'-70'

Evergreen tree native to CA that has dense foliage for shade with cupped leaves and acorns.



Saratoga Sweet Bay

Laurus n. 'Saratoga'

Tree Height: 15'-20' | Canopy Width: 15'-20'

Evergreen tree with leathery, aromatic leaves. Clusters of small yellow flowers in the spring followed by small purple fruit.

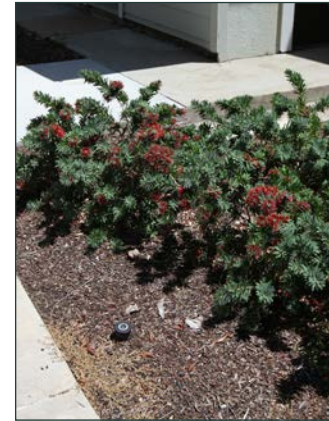


Dwarf Myrtle

Myrtus c. 'Compacta'

Foundation Shrub | 3'-4' tall x wide

Compact evergreen shrub useful for screens and hedges with inconspicuous flowers and aromatic dense leaves.



Dwarf Bottlebrush

Callistemon Little John

Medium Shrub | 3' - 4' tall x wide

Evergreen shrub with glossy leaves and pink flowers; great for tight spaces, can be hedged to maintain size.



Silver Streak Flax

Dianella 'Silver Streak'

Small Shrub/Accent | 18"-24" tall x wide

Neat, clumping habit ideal for massing. Blue-violet flowers appear in the Spring followed by bright blue berries.



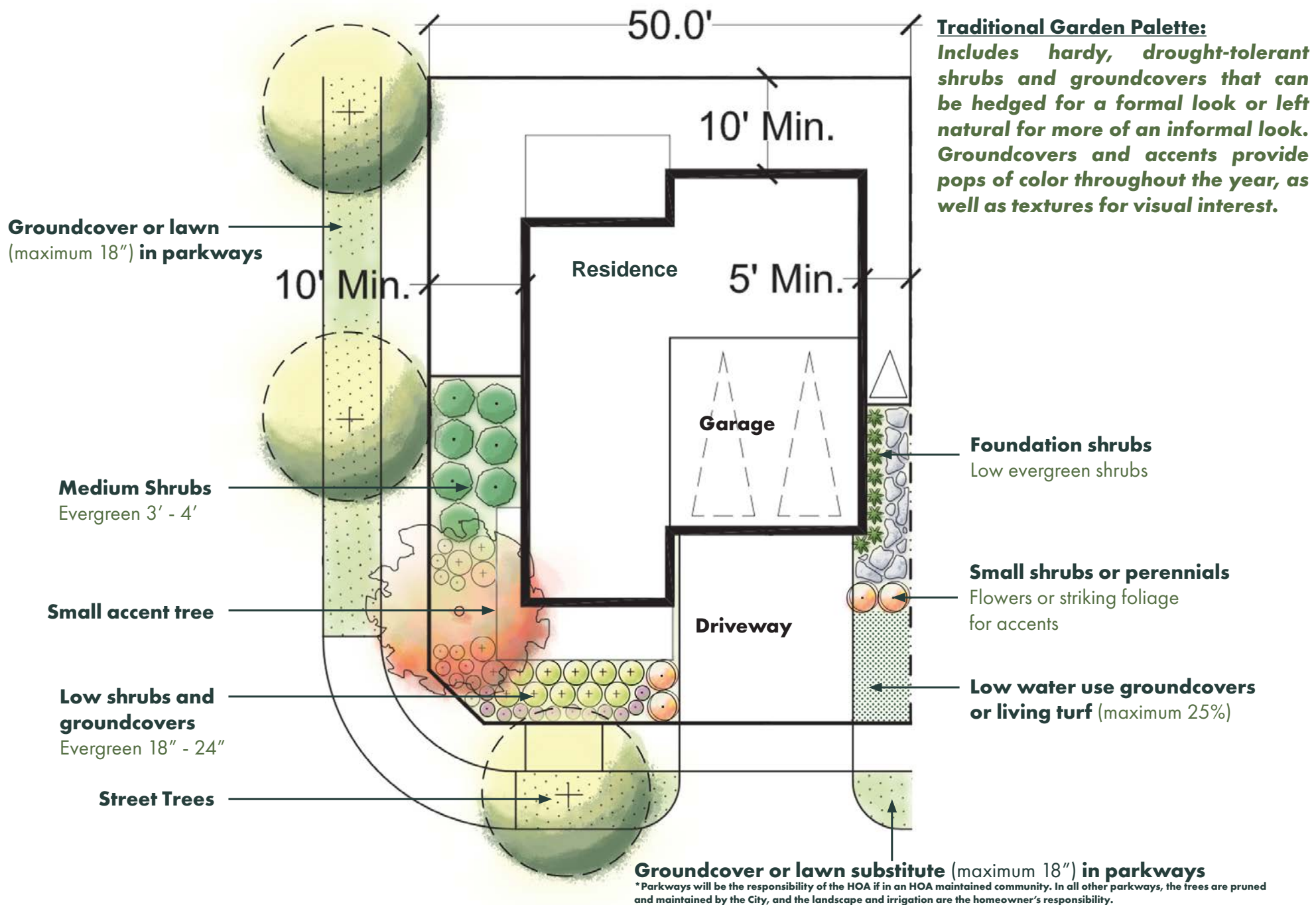
White Lantana

Lantana m. 'Alba'

Groundcover | 2' tall x 5' wide

Evergreen low groundcover with white flowers. Hardier, less sensitive to frost, and easier to maintain than other varieties.





Traditional Sample Garden

Plan View Example



Muskogee Crape Myrtle
Lagerstroemia indica
Front Yard Tree

Natchez Crape Myrtle
Lagerstroemia indica
Front Yard Tree

Coast Rosemary
Westringia f. 'Morning Light'
Medium Shrub

Shrubby Yew Pine
Podocarpus macrophyllus
Foundation Shrub

Star Jasmine
Trachelospermum jasminoides
Groundcover

Fortnight Lily
Dietes grandiflora
Small Accent Shrub

European Sample Garden

Street View Example



Holly Oak

Quercus ilex

Tree Height: 30' | Canopy Width: 30'

Evergreen tree with a dense rounded canopy. Bark is smooth and dark gray with usually oval to lance-shaped leaves.



Crape Myrtle

Lagerstroemia indica

Tree Height: 15'-20' | Canopy Width: 15'-20'

Showy summer flowers and intriguing bark. Brilliant fall color. Comes in a variety of colors from reds, to purples, to pinks.



Shrubby Yew Pine

Podocarpus m. 'Maki'

Foundation Shrub | 6' tall x 3' wide

Slower growing and smaller than other varieties. Dense and upright, with leaves 3" long, 1/4" wide.



Coast Rosemary

Westringia fruticosa 'Morning Light'

Medium Shrub | 3' tall x wide

Evergreen shrub with a spreading, loose growth with white flowers and white-edged leaves.



Fortnight Lily

Dietes grandiflora

Small Shrub/Accent | 3' tall x wide

Strappy leaved plant with small flowers appearing on branched stalks throughout the spring & summer, sometimes into fall.



Star Jasmine

Trachelospermum jasminoides

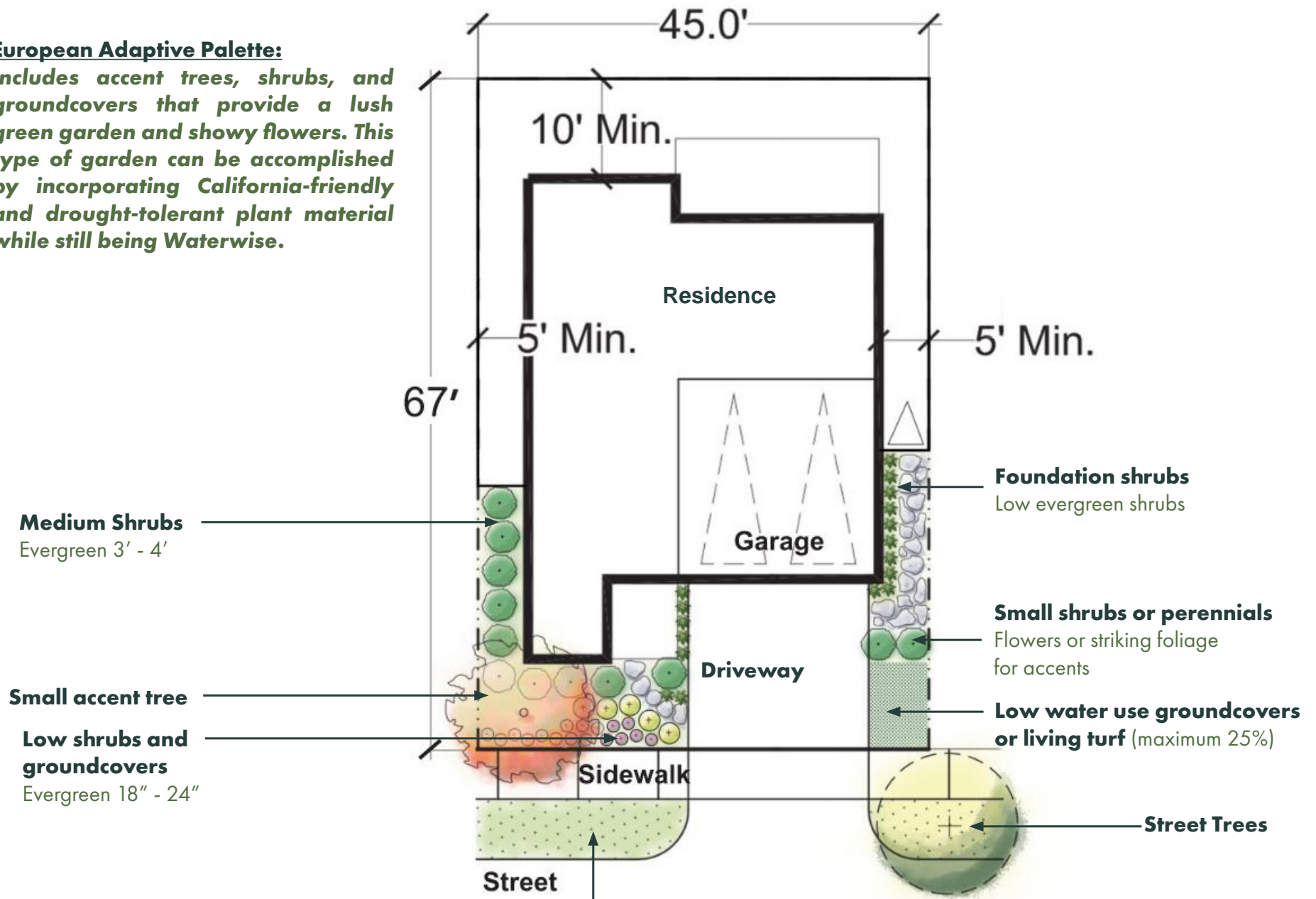
Groundcover | 2' tall x 5' wide

Evergreen low groundcover with white flowers. Glossy light green oval leaves when new, maturing to lustrous dark green.



European Adaptive Palette:

Includes accent trees, shrubs, and groundcovers that provide a lush green garden and showy flowers. This type of garden can be accomplished by incorporating California-friendly and drought-tolerant plant material while still being Waterwise.



Groundcover or lawn substitute (maximum 18") in parkways

*Parkways will be the responsibility of the HOA if in an HOA maintained community. In all other parkways, the trees are pruned and maintained by the City, and the landscape and irrigation are the homeowner's responsibility.

European Sample Garden

Plan View Example





Hollyleaf Cherry
Prunus ilicifolia
Foundation Shrub

Holly Oak
Quercus ilex
Front Yard Tree

Tiny Tower
Cupressus sempervirens
Medium Shrub

Hollyleaf Cherry
Prunus ilicifolia
Foundation Shrub

Texas Ranger
Leucophyllum f. 'Compacta'
Small Accent Shrub

Huntington Blue
Rosmarianus o. 'Huntington Carpet'
Groundcover

Mediterranean Sample Garden

Street View Example



Holly Oak

Quercus ilex

Tree Height: 30' | Canopy Width: 30'

A tall and wide with a dense rounded canopy. Bark is smooth and dark gray with usually oval to lance-shaped leaves.



Swan Hill Olive

Olea europaea 'Swan Hill'

Tree Height: 15' | Canopy Width: 15'

Fruitless variety with deep green leaves and has little or no pollen. Willowlike foliage that goes well with most colors.



Hollyleaf Cherry

Prunus ilicifolia

Foundation Shrub | 4'-6' tall x wide

Use as a hedge or a screen. Leaves are glossy, oval to elliptical that are light green when new, maturing to a rich deep green.



Tiny Tower Cypress

Cupressus sempervirens 'Tiny Tower'

Medium Shrub | 8' tall x 2' wide

Horizontal branches and deep blue-green foliage. This is a conifer that has tiny scale-like leaves.



Texas Ranger

Leucophyllum frutescens 'Compacta'

Small Shrub/Accent | 5' tall x wide

Compact and slow growing this accent shrub with gray foliage and pink flowers. Blooms at varying times of the year.



Huntington Blue

Rosmarianus o. 'Huntington Carpet'

Groundcover | 1 1/2' tall x 3' wide

Quickly spreading groundcover while maintaining a dense center. Pale blue flowers throughout the year.



Mediterranean Palette:

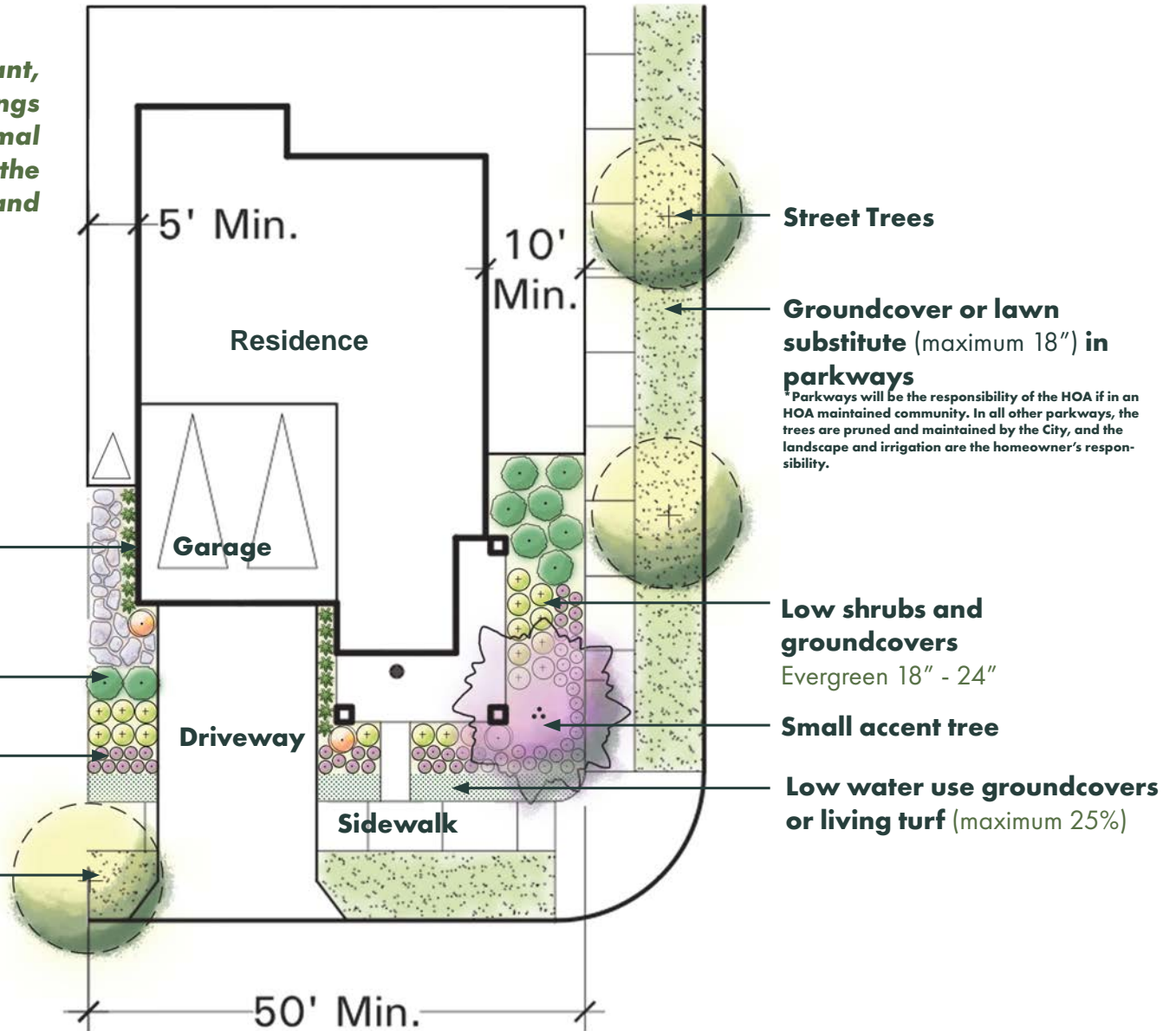
Combines low maintenance, fragrant, and low water use plants. Plantings combine relaxed materials with formal accents. This garden will thrive in the summer heat and aridity that the Inland Valley experiences.

Foundation shrubs
Low evergreen shrubs

Medium Shrubs
Evergreen 3' - 4'

Small shrubs or perennials
Flowers or striking foliage for accents

Street Trees



Street Trees

Groundcover or lawn substitute (maximum 18") in parkways

*Parkways will be the responsibility of the HOA if in an HOA maintained community. In all other parkways, the trees are pruned and maintained by the City, and the landscape and irrigation are the homeowner's responsibility.

Low shrubs and groundcovers
Evergreen 18" - 24"

Small accent tree

Low water use groundcovers or living turf (maximum 25%)

Mediterranean Sample Garden

Plan View Example



Desert Museum
Parkinsonia 'Desert Museum
Front Yard Tree

Mexican Bird of Paradise
Caesalpinia mexicana
Medium Shrub

Blue Chalk Sticks
Senescio mandraliscae
Groundcover

Bird of Paradise
Strelitzia reginae
Foundation Shrub

Bulbine
Bulbine frutescens
Small Accent Shrubs

Spanish Sample Garden

Street View Example



Desert Museum

Parkinsonia 'Desert Museum'

Tree Height: 20' | Canopy Width: 20'

This is a trouble-free desert tree with clusters of small, bright yellow flowers. Trunk, stems, and leaves are light green.



Mexican Bird of Paradise

Caesalpinia mexicana

Medium Shrub | 6' tall x 6' wide

Evergreen shrub with fern like leaves and clusters of yellow flowers in all but the coolest months.

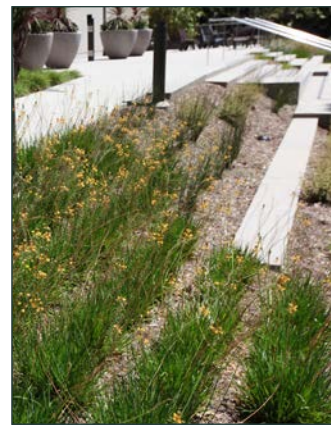


Chitalpa

Chitalpa tashkentensis

Tree Height: 20' | Canopy Width: 20'

A deciduous tree with clusters of frilly trumpet-shaped flowers in pink, white, or lavender appear from late spring to fall.



Bulbine

Bulbine frutescens

Small Shrub/Accent | 1' tall x 2' wide

Leaves are fleshy, bright green and shaped like slender pointed pencils. Produces clusters of tubular yellow flowers.



Bird of Paradise

Strelitzia reginae

Foundation Shrub | 3'-4' tall x wide

Grown for spectacular flowers that combine orange, blue, and white. Flowers best in cooler season though blooms year-round.



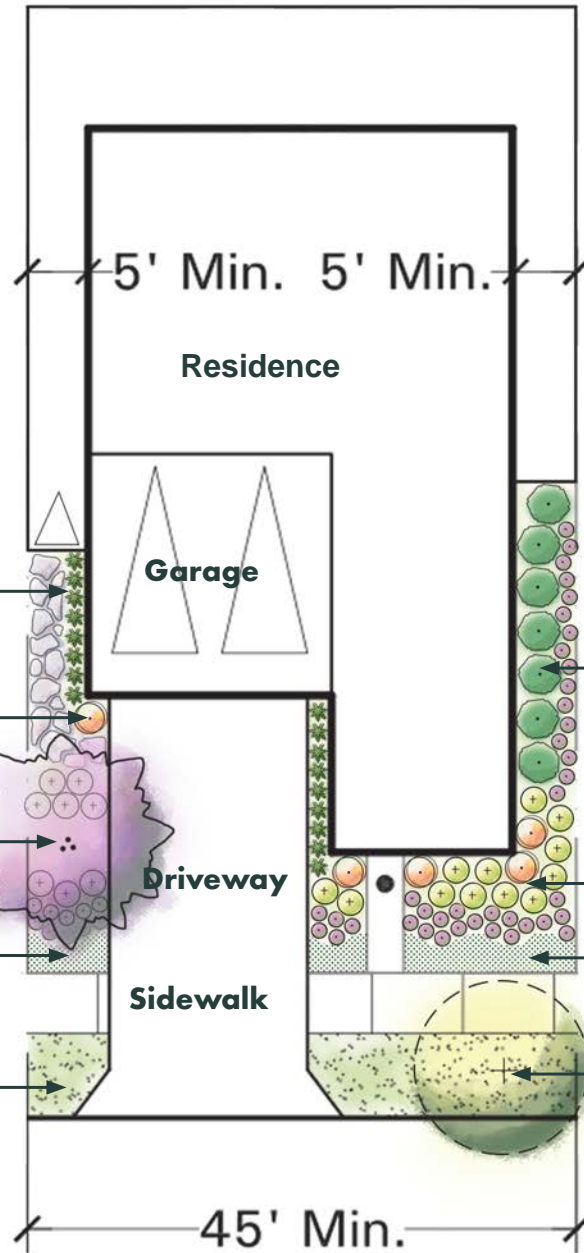
Blue Chalk Sticks

Senecio mandraliscae

Groundcover | 1 1/2' tall x 2' wide

This succulent type ground cover has cylindrical, slightly curved, striking blue-gray leaves that grow 6" long.





Spanish Palette:

Plant materials include citrus, succulents, and flowering and fragrant plant material. For additional accents, consider pots, paving materials, and recirculating fountains. This garden will thrive in the summer heat and aridity that the Inland Valley experiences.

Foundation shrubs
Low evergreen shrubs

Medium Shrubs
Evergreen 3' - 4'

Small accent tree

Low shrubs and groundcovers
Evergreen 18" - 24"

Groundcover or lawn substitute
(maximum 18") in parkways

*Parkways will be the responsibility of the HOA if in an HOA maintained community. In all other parkways, the trees are pruned and maintained by the City, and the landscape and irrigation are the homeowner's responsibility.

Foundation shrubs
Low evergreen shrubs

Small shrubs or perennials
Flowers or striking foliage for accents

Low water use groundcovers or living turf (maximum 25%)

Street Trees

Spanish Sample Garden
Plan View Example

California Sycamore
Platanus racemosa
Front Yard Tree

Toyon
heteromeles arbutifolia
Foundation Shrub

Dwarf Coffeeberry
Frangula californica
Medium Shrub

Cleveland Sage
Salvia clevelandii
Small Accent Shrubs

Dwarf coyote Brush
Baccharis pilularis
Groundcover

Western Redbud
Cercis occidentalis
Front Yard Tree

California Native Sample Garden

Street View Example





California Sycamore

Platanus racemosa

Tree Height: 50' | Canopy Width: 50'

A deciduous robust native of the foothills, frequently with multiple trunks. Smooth branches are often twisted and contorted.



Western Redbud

Cercis occidentalis

Tree Height: 18' | Canopy Width: 18'

Deciduous tree native to the foothills usually multitrunked. Magenta flowers bloom in spring with handsome blue-green leaves.



Toyon

Heteromeles arbutifolia

Foundation Shrub | 3'-4' tall x wide

Leathery dark green leaves, vary in shape with profuse small white flowers in flattish clusters appear in summer.



Dwarf Coffeberry

Frangula californica

Medium Shrub | 3' tall x wide 6'

Leaves are shiny or dull, dark green to yellowish green. Berries ripen from green to red to black. Attracts bees.



Cleveland Sage

Salvia clevelandii

Small Shrub | 2' tall x 5' wide

Evergreen shrub with soft sage leaves that are highly aromatic and clusters of flowers ranging from white, blue, to purple.



Dwarf Coyote Brush

Baccharis pilularis

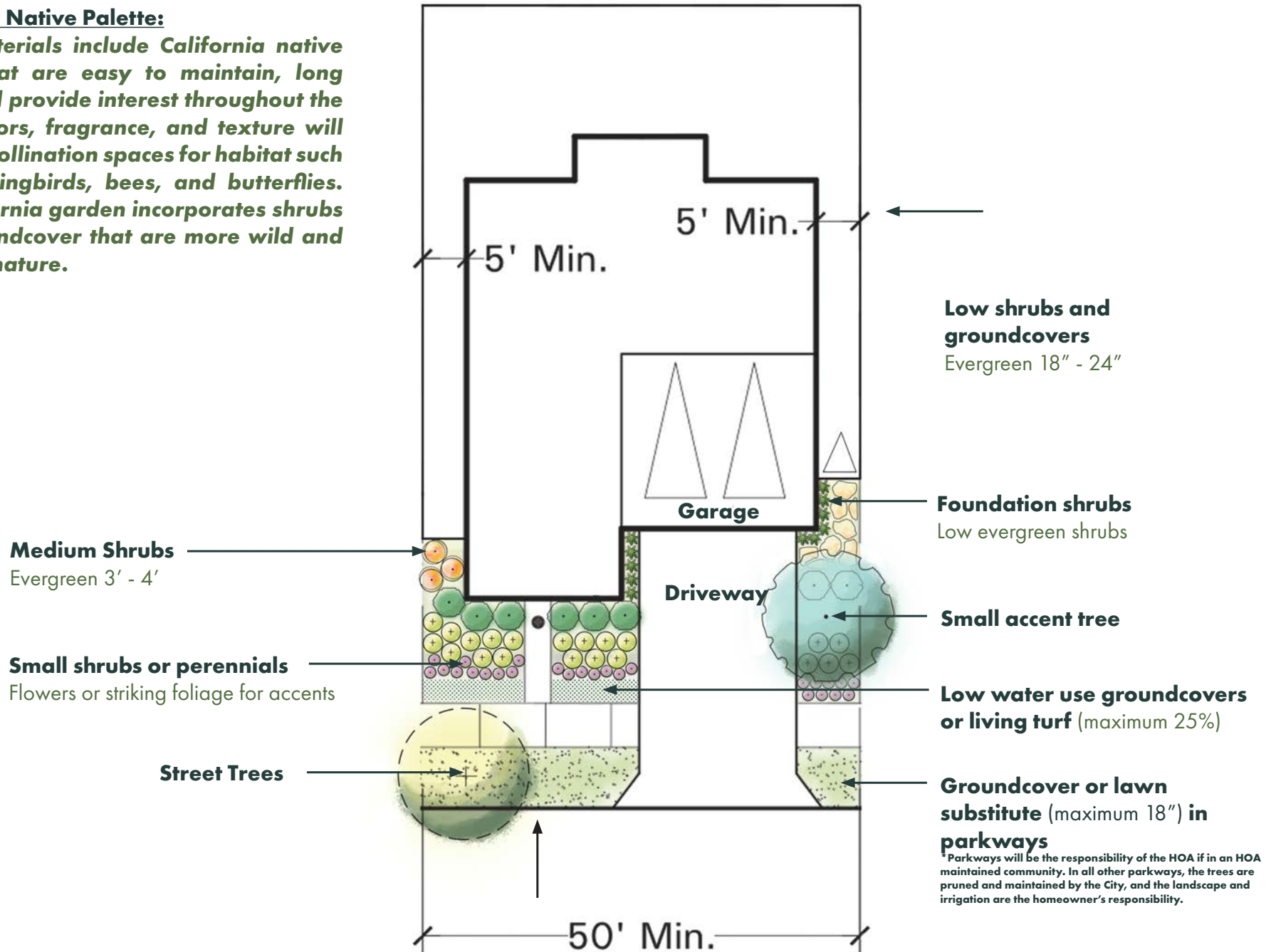
Groundcover | 1' tall x 4' wide

This is a tough groundcover. It makes a dense billowy, bright green mat with small, toothed leaves closely set on branches.



California Native Palette:

Plant materials include California native plants that are easy to maintain, long lived, and provide interest throughout the year. Colors, fragrance, and texture will provide pollination spaces for habitat such as hummingbirds, bees, and butterflies. The California garden incorporates shrubs and groundcover that are more wild and rangy in nature.



California Native Sample Garden

Plan View Example



Weeping Bottlebrush
Callistemon viminalis
Front Yard Tree

Pink Muhly
Muhlenbergia capillaris
Medium Shrub

California Meadow Sedge
Carex pansa
Groundcover

Royal Beard Tongue
Pensemon spectabilis
Foundation Shrub

Maire's Fescue
Festuca mairei
Small Accent Shrubs

Meadow Sample Garden

Street View Example



Cork Oak

Quercus suber

Tree Height: 40' | Canopy Width: 40'

This evergreen tree has shiny dark green leaves above and gray beneath. The trunk and limbs have a thick corky bark.



Weeping Bottlebrush

Callistemon viminalis

Tree Height: 20' | Canopy Width: 15'

Small tree with pendulous branches. Leaves are narrow and light green. Bright red brushes appear in late spring.



Royal Beard Tongue

Penstemon spectabilis

Foundation Shrub | 3'-4' tall x wide

These wildflowers can thrive in heat and poor soils. Rose-colored to purplish flowers in spring and early summer.



Pink Muhly

Muhlenbergia capillaris

Medium Shrub | 3' tall x wide 4'

Dark green foliage forms a mound with airy plumes of feathery reddish flowers appear in the fall.



Maire's Fescue

Festuca mairei

Small Shrub/Accent | 2'-3' tall x wide

This evergreen ornamental grass has a fine-textured, pale yellowish to gray-green leaves.



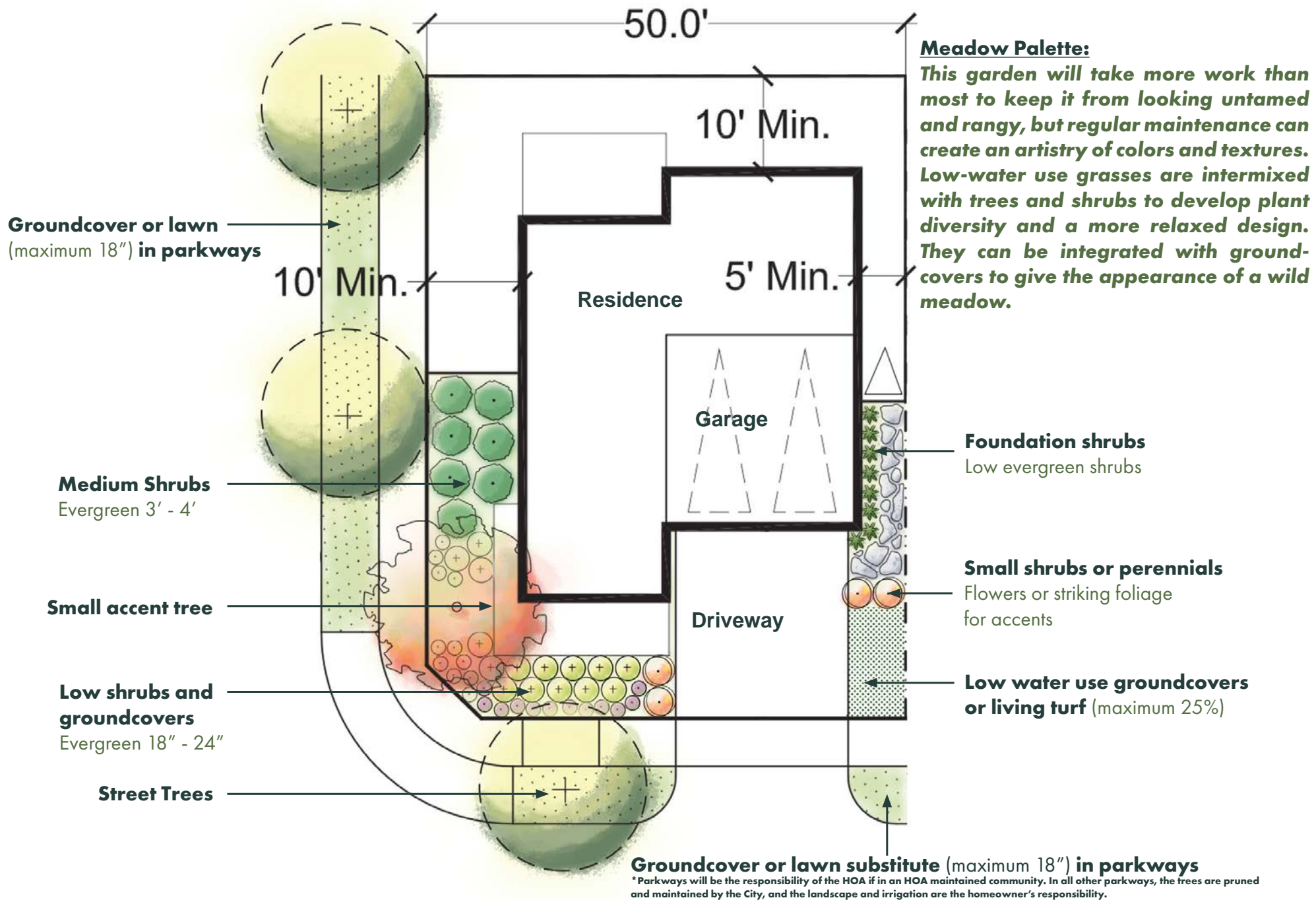
California Meadow Sedge

Carex pansa

Groundcover | 1' tall x 1' wide

Semi-evergreen grass native to CA and is specialized in mass planting and naturalizing.





Meadow Sample Garden

Plan View Example

ONTARIO'S CLIMATE AND SOILS INFORMATION

Plant selection shall be appropriate to Ontario's regional climate Zone 18, Sunset Western Garden Climate Zone and falls between 9b and 10a of the USDA Plant Hardiness Zone. Ontario is classified as Mediterranean, and characterized by hot, dry summers and mild winters. Winter temperatures average between 60 to 70 degrees, with occasional lows in the 20's. Summers average 75 –90 degrees, with highs exceeding 100 degrees. The average yearly rainfall is approximately 16 inches. Winds develop from the southwest averaging six mph. Hot, dry Santa Ana winds occur between October to March from the northeast at 30 mph with gusts at 60mph and more. Air quality is considered poor due to frequent temperature inversions trapping pollutants below the inversion.

The historical vegetation of this region was heavily dominated by sage scrub and chaparral plant communities. With local stands of riparian vegetation along the seasonal washes and streams. While much of the natural landscape has been removed through urbanization, a highly diverse range of plants can be grown within the southern interior valleys and foothill regions. Low water use plant materials, including many Australian and Mediterranean species, are among the many successful choices and can include Eucalyptus, Acacia, Olive, Oak, and Deodar Cedar.

Soils range from well-draining sandy loam in the north to varying clay soils in the south. It is recommended to obtain a simple soil test before planting; however, the material provided in this document can generally handle Ontario's soils.

The following pages include additional drought-tolerant trees, shrubs, and plant material appropriate for Ontario's climate and soils. It is suggested to always reach out to a landscape architect or designer, a licensed landscape contractor, or a qualified nursery person for landscape construction, plantings, and irrigation to assist with designing and installing a viable and healthy landscape.





Coast Live Oak

Quercus agrifolia

Tree Height: 40'-70' | Canopy Width: 20'-70'

Evergreen tree native to CA that has dense foliage for shade with cupped leaves and acorns.



Raywood Ash

Fraxinus oxycarpa

Tree Height: 50' | Canopy Width: 20'-30'

Deciduous tree with dark green leaves that change to purple-red in the fall. It grows upright with a rounded canopy.



Goldenrain Tree

Koelreuteria paniculata

Tree Height: 35' | Canopy Width: 25'-40'

Deciduous tree with showy yellow flowers and pods. It is also suitable for difficult sites such as under utility lines.



Australian Willow

Geijera parviflora

Tree Height: 35' | Canopy Width: 20'-25'

Evergreen tree with graceful hanging leaves similar to that of a weeping willow, but more compact.



Jacaranda

Jacaranda mimosifolia

Tree Height: 50' | Canopy Width: 15'-30'

Partly deciduous tree with an oval crown with fern-like leaves and showy tubular flowers.



Water Gum

Tristaniopsis laurina

Tree Height: 35' | Canopy Width: 15'-30'

Evergreen tree with glossy leaves and clusters of small, fragrant yellow flowers. Patchy mahogany bark peels to white.



Medium to Large Trees

Plant Recommendations Appropriate for Ontario



Western Redbud

Cercis occidentalis

Tree Height: 15'-20' | Canopy Width: 20'-70'

Deciduous tree native to CA that blooms best in full sun, with showy purple-pink flowers and brown seed pods.



Desert Willow

Chilopsis linearis

Tree Height: 30' | Canopy Width: 10'-20'

Deciduous tree native to CA that is usually multi-trunked or low-branching and has lavender, pink, or white flowers.



Strawberry Tree

Arbutus unedo

Tree Height: 10'-35' | Canopy Width: 30'

Evergreen tree with red-brown trunk and pendant clusters of pink flowers that turn to red fruits tasting like mealy apricot.



Mexican Palo Verde

Parkinsonia aculeata

Tree Height: 20' | Canopy Width: 20'-25'

Deciduous tree with airy, thin foliage that handles heat and dryness. Small showy, yellow flowers turn to brown legume fruits.



Indian Hawthorn

Rhaphiolepis indica (in tree form)

Tree Height: 25' | Canopy Width: 10'

Evergreen tree with glossy leaves and pink flowers; great for tight spaces and can also be grown as a shrub instead of as a tree.



Chinese Fringe Tree

Chionanthus retusus

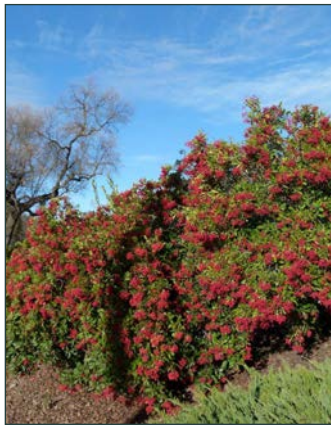
Tree Height: 20' | Canopy Width: 6'-12'

Deciduous tree with glossy leaves that turn yellow in fall and has dramatic clusters of white flowers with thread-like petals.



Small Accent Trees

Plant Recommendations Appropriate for Ontario



Toyon

Heteromeles arbutifolia

Large Shrub | 6' tall x 4' wide

Evergreen shrub native to CA with red berries and leathery dark green leaves. Clusters of small white flowers in summer.



Bee's Bliss Sage

Salvia 'Bee's Bliss'

Small Shrub | 2' tall x 5' wide

Evergreen shrub with dark green leaves that are highly aromatic and clusters of flowers ranging from white, blue, to purple.

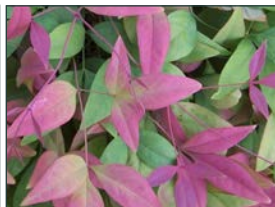


Heavenly Bamboo

Nandina Gulf Stream

Medium Shrub | 3' tall x 2' wide

Evergreen shrub with a compact shape and leaves that turn red in fall. Great as a low hedge.

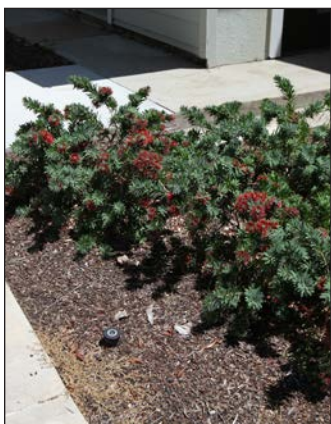


Orange Stalked Bulbine

Bulbine frutescens

Small Shrub | 2' tall x 4' wide

Perennial shrub with succulent foliage and stems of orange flowers. Works well in difficult areas such as rock crevices.



Dwarf Bottlebrush

Callistemon Little John

Medium Shrub | 3' - 4' tall x wide

Evergreen shrub with glossy leaves and pink flowers; great for tight spaces, can be hedged to maintain size.



Japanese Privet

Ligustrum japonicum

Medium Shrub | 6'-8' tall x 4'-6' wide

Evergreen shrub that works well as screening hedge.



Medium to Small Shrubs and Accents

Plant Recommendations Appropriate for Ontario



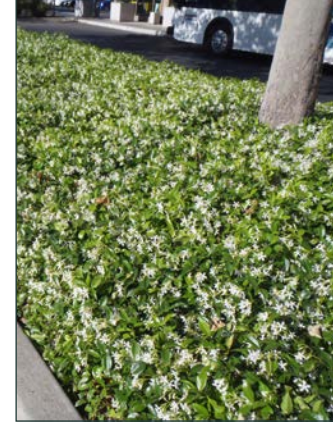
Blue Chip Juniperus
Juniperus horizontalis 'Blue Chip'
 Groundcover | 1' tall x 6' wide
 Evergreen groundcover with vivid blue foliage that forms a dense, mounded shape; blue needles contrast well in fall.



Green Carpet Natal Plum
Carissa macrocarpa 'Green Carpet'
 Groundcover | 1.5' tall x 4' wide
 Evergreen groundcover with dark green, shiny, and thick foliage; blooms fragrant, white, star-shaped flowers in summer.



White Trailing Lantana
Lantana montevidensis 'Alba'
 Groundcover | 8"-12" tall x 3'-6' wide
 Evergreen groundcover that is heat and drought tolerant. It can also control erosion.



Star Jasmine
Trachelospermum jasminoides 'Star'
 Groundcover | 2' tall x 5' wide
 Evergreen groundcover with aromatic, needle-like leaves and white flowers. Attractive to butterflies but rabbit resistant.



Mundi Coast Rosemary
Westringia fruticosa 'Mundi'
 Groundcover | 1' tall x 4'-6' wide
 Evergreen groundcover used in mass; drought and salt tolerant.



Canyon Gray Sagebrush
Artemisia californica 'Canyon Gray'
 Groundcover | 1'-2' tall x 1'-2' wide
 Aromatic evergreen groundcover with grayish white leaves. Foliage is lush in the winter and can be sparse in the summer.



Groundcover and Lawn Substitutes

Plant Recommendations Appropriate for Ontario



Rosemary

Rosmarinus officinalis 'Prostratus'

Groundcover | 2' tall x 5' wide

Evergreen groundcover with aromatic, needle-like leaves and pale blue flowers. Attractive to butterflies but rabbit resistant.



Kurapia

Phyla nodiflora

Lawn Substitute | 2" tall x 24" wide

Evergreen lawn substitute that grows compact and low-lying once established, attracts bees if flowers are not mowed.



Wall Germander

Teucrium chamaedrys

Groundcover | 1' tall x 2' wide

Evergreen groundcover with oval, toothed leaves and tubular purple flowers. Fragrant and rabbit resistant.



Common Yarrow

Achillea millefolium

Groundcover | 6" tall x 2' wide

Perennial groundcover native to CA with fern-like, lacy leaflets and clusters of small flowers. Mow regularly if used as a lawn.



Various Succulents

Succulents

Groundcover | Varies

Succulents come in a wide range of sizes and colors. They can complement any yard. Check with the nursery for mature sizes.



Blue Chalk Sticks

Senecio mandraliscae

Lawn Substitute/groundcover | 12" tall x 3'

Evergreen succulent with blue, pencil-like leaves. It does well in full sun and can tolerate rabbits.





Myoporum

Myoporum

Groundcover | 1'-2' tall x 6' wide

Dense groundcover of light green leaves with tiny white flowers in the summer followed by purple fruit.



Red Yucca

Hesperaloe parviflora

Groundcover | 3'-4' tall x 3'-4' wide

Evergreen succulent with strap-like, leathery blue green leaves. Dark pink flowers attract hummingbirds.



Verbena

Verbena canadensis

Groundcover | 8"-12" tall x 3'-6' wide

Evergreen groundcover that is heat and drought tolerant. It can also control erosion.



California Meadow Sedge

Carex pansa

Groundcover | 1' tall x 1' wide

Semi-evergreen grass native to CA and is specialized in mass planting and naturalizing.



Ice Plant

Delosperma cooperi

Groundcover | 0.3' tall x 1.5'-3' wide

Succulent groundcover with bright green leaves and pink flowers; looks great in rock gardens and hillsides.



Coyote Brush

Baccharis pilularis 'Pigeon Point'

Groundcover | 1'-2' tall x 8'-10' wide

Large scale evergreen groundcover that makes a low water use, low maintenance lawn replacement.



Groundcover and Lawn Substitutes

Plant Recommendations Appropriate for Ontario