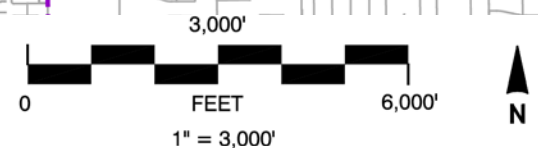


- LEGEND**
- Boundary Lines**
- Airport Property Line
 - County Line
 - - - City Limits
 - Street
 - Existing Runways } Runway 8L-26R
Runway 8R-26L

- Policy Boundaries**
- Airport Influence Area (beyond map view)
- Safety Zones¹**
- Zone 1 - Runway Protection Zone (RPZ)
 - Zone 2 - Inner Approach/Departure Zone
 - Zone 3 - Inner Turning Zone
 - Zone 4 - Outer Approach/Departure Zone
 - Zone 5 - Sideline Zone³
 - Overlay Safety Zone 1A³

- NOTES**
1. See Section 6.1 and Table 2-2 for safety policies and criteria. Policies apply only to City of Ontario.
 2. Avigation easement dedication required within all safety zones (see Policy S7 and SP1).
 3. See Section 6.1.5 (c) for Zone 1A explanation.

S:\Planning\Divisions\Airport Planning\Ontario International Airport - ALUCP\ONT-Compatibility-2018\GIS Maps\ONT-Compatibility - Standard\ONT-Compatibility.dwg Jun 14, 2018 - 11:20am



Base Map Sources:

- County of San Bernardino, County of Los Angeles, and County of Riverside TLMA (2009).

Prepared By: **Mead&Hunt** www.meadhunt.com



Ontario International Airport
Land Use Compatibility Plan
 July 2018 Amendment