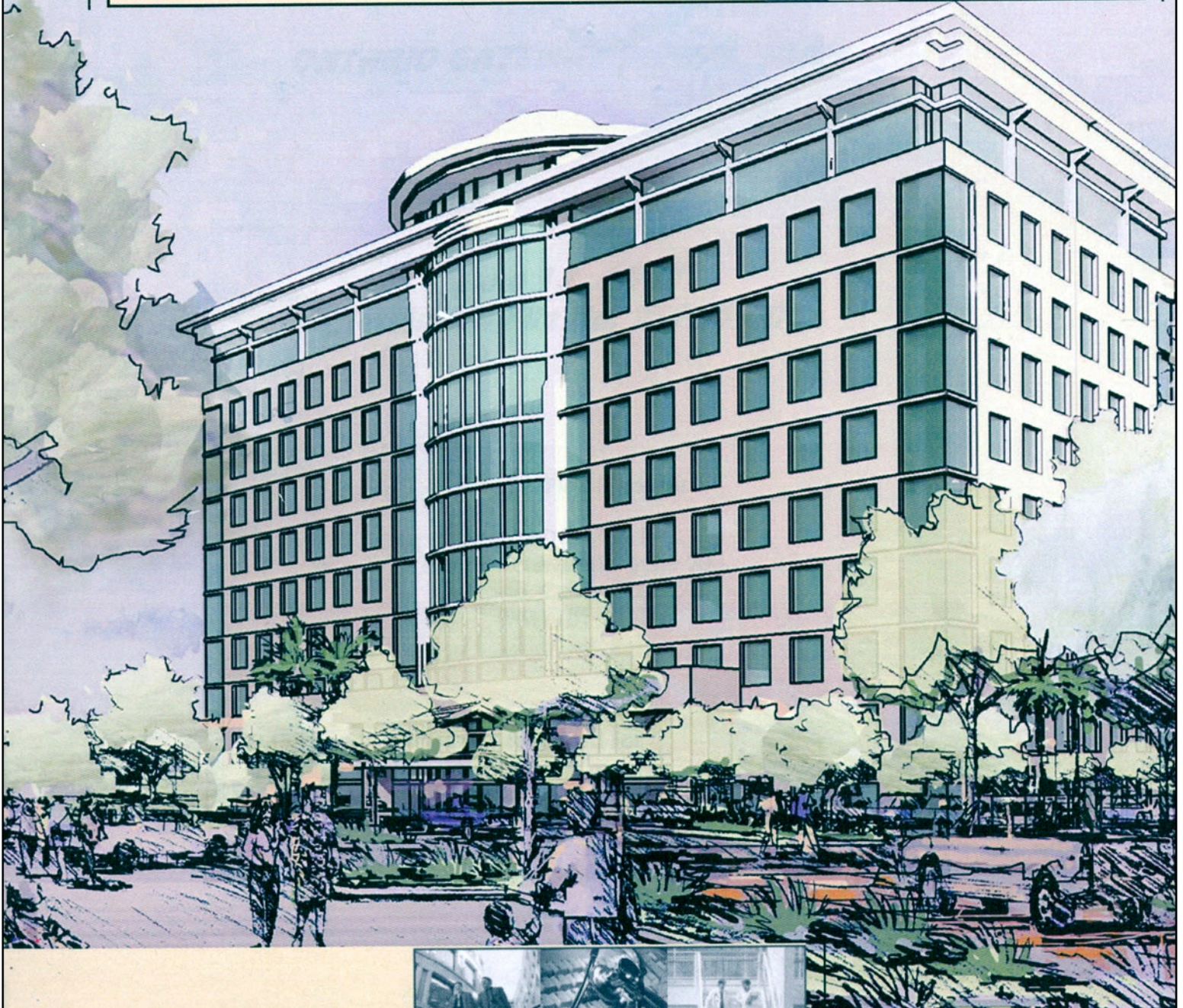


ONTARIO GATEWAY Specific Plan



OCTOBER 2007



Updated with no amendments October, 2008

LSA

ADOPTION

ONTARIO GATEWAY SPECIFIC PLAN

FILE NUMBER: PSPO05-005

City Council Ordinance Number: 2863

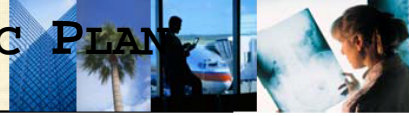
Adopted July 3, 2007

AMENDMENTS

No amendments at this time

October, 2008

ONTARIO GATEWAY SPECIFIC PLAN



ONTARIO GATEWAY SPECIFIC PLAN

July 3, 2007
File No: PSP05-005
Ordinance No. 2863

Specific Plan Preparer

LSA ASSOCIATES, INC.
1500 Iowa Avenue, Suite 200
Riverside, California 92507
(951) 781-9310

Prepared For

THE BATES COMPANY
147 East Olive Avenue
Monrovia, California 91016
(626) 305-5338

And

THE CITY OF ONTARIO
303 East B Street
Ontario, California 91764
(909) 395-2024

ONTARIO GATEWAY SPECIFIC PLAN

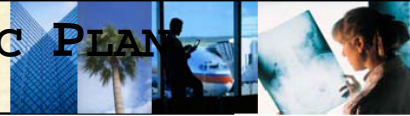


TABLE OF CONTENTS

I: INTRODUCTION

A.	<i>Intent and Purpose</i>	<i>I-1</i>
A.1	Intent	I-1
A.2	Purpose	I-1
A.3	Project Overview	I-2
B.	<i>Project Goals and Objectives</i>	<i>I-2</i>
B.1	Goals	I-2
B.2	Objectives	I-3
C.	<i>Authority and Scope</i>	<i>I-4</i>
C.1	Authority	I-4
C.2	Scope	I-4
D.	<i>Project Location and Existing Land Uses</i>	<i>I-5</i>
D.1	Location	I-5
D.2	Existing Setting and Land Uses	I-5
E.	<i>Pre-Existing General Plan and Zoning Designations</i> ..	<i>I-7</i>
E.1	General Plan	I-7
E.2	Zoning Code	I-7
E.3	Redevelopment Project Area	I-10
F.	<i>Project Background and History</i>	<i>I-10</i>
F.1	History	I-10
F.2	Project Site Background	I-12
G.	<i>Specific Plan Organization</i>	<i>I-12</i>
H.	<i>Severability</i>	<i>I-13</i>

II: LAND USE AND DEVELOPMENT

A.	<i>Land Use Concept</i>	<i>II-1</i>
A.1	Mixed Use Planning Area	II-4
A.2	Entertainment Planning Area	II-5
A.3	Office Planning Area I	II-5
A.4	Office Planning Area II	II-5

**ONTARIO GATEWAY SPECIFIC PLAN
TABLE OF CONTENTS**



A.5 Auto Planning Area II-5

B. Permitted Land Uses by Planning Area and Substantial Use Conformance II-5

B.1 Permitted Land Uses II-5

B.2 Substantial Use Conformance II-13

C. Site Development Standards II-14

C.1 General Site Layout Concepts II-14

C.2 General Standards II-15

C.3 Development Standards for Specific Uses II-17

C.4 Modifications to General Development Standards II-21

D. Circulation, Parking, and Loading Requirements ... II-21

D.1 On-Site Circulation II-21

D.2 Parking Lots II-22

D.3 Parking Structures II-23

D.4 Bicycle Parking II-24

D.5 Trip Reduction Plans II-24

D.6 Loading Areas II-25

E. Refuse Areas II-26

F. Environmental Performance Standards II-26

F.1 Purpose and Applicability II-26

F.2 Air Quality II-26

F.3 Electrical or Electronic Interference II-27

F.4 Hazardous Materials Management II-27

F.5 Light and Glare II-27

F.6 Liquid and Solid Wastes II-27

F.7 Noise II-27

F.8 Odors II-28

F.9 Ground Vibration II-28

F.10 Water Quality II-29

F.11 Cultural Resources II-29

III: CIRCULATION

A. Existing Setting III-1

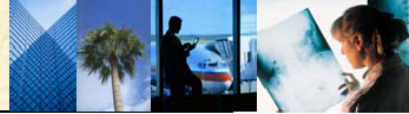
A.1 Existing Highways and Roadways III-1

A.2 Rail Facilities III-2

A.3 Air Transportation Facilities III-2

A.4 Public Transportation III-2

**ONTARIO GATEWAY SPECIFIC PLAN
TABLE OF CONTENTS**



B. Project Traffic Generation III-2

C. Project Roadway Improvements III-5

 C.1 Guasti Road Improvements III-6

 C.2 Haven Avenue Improvements III-9

 C.3 Local Access..... III-9

D. Pedestrian Connections III-10

E. Bus Facilities III-10

IV: PUBLIC SERVICES, UTILITIES, AND COMMUNITY FACILITIES

A. Water Facilities IV-1

 A.1 Existing Water Facilities..... IV-1

 A.2 Proposed Water Facilities IV-1

 A.3 Recycled Water Facilities IV-1

 A.4 Water Demand IV-3

B. Sewer System IV-6

 B.1 Existing Wastewater System IV-6

 B.2 Proposed Wastewater Facilities IV-6

C. Water Quality IV-8

 C.1 Existing Water Quality Development Standards IV-8

 C.2 Best Management Practices IV-8

 C.3 Source Control BMPs IV-10

 C.4 Treatment Control BMPs IV-10

D. Stormwater Facilities IV-11

 D.1 Existing Drainage System IV-11

 D.2 Proposed Drainage System..... IV-11

E. Solid Waste Disposal IV-14

 E.1 Existing Solid Waste Disposal IV-14

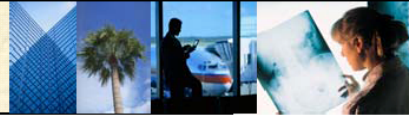
 E.2 Proposed Solid Waste Disposal..... IV-14

F. Utilities IV-14

 F.1 Existing Utilities..... IV-14

 F.2 Proposed Utilities IV-14

**ONTARIO GATEWAY SPECIFIC PLAN
TABLE OF CONTENTS**



G. Community Facilities IV-16

G.1 Fire Protection..... IV-16

G.2 Police Services..... IV-16

V: DESIGN GUIDELINES

A. General Concepts for Planning Area V-1

A.1 Design Objectives..... V-1

A.2 Site Design..... V-1

A.3 General Guidelines for Buildings V-3

B. Design Concepts for Specific Building Uses V-9

B.1 Parking Structure Guidelines..... V-9

B.2 Transient Lodging Buildings V-13

B.3 Hospital Facilities..... V-14

B.4 Office Buildings..... V-16

B.5 Business Park Facilities V-19

B.6 Non-Auto-Related Commercial..... V-20

B.7 Auto-Related Commercial..... V-22

C. Plaza Design V-25

C.1 Purpose and Intent..... V-25

C.2 Function..... V-26

C.3 Character and Amenities V-26

C.4 Recommended Layout V-26

C.5 Sitting Space..... V-29

C.6 Environmental Factors..... V-29

C.7 Access and Circulation V-30

C.8 Size and Calculations..... V-31

D. Landscaping V-31

D.1 General Landscape Standards..... V-31

D.2 Street Right-of-Way Landscape Standards..... V-33

D.3 Street Frontage Landscape Standards..... V-33

D.4 Haven Avenue Entryway..... V-37

D.5 Guasti Road Entryways V-37

D.6 Perimeter Landscaping V-37

D.7 Extended Access Easement V-37

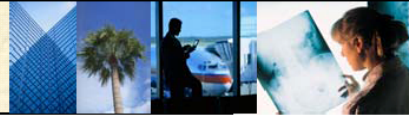
D.8 Parking Lots V-42

D.9 Acceptable Plant Materials..... V-43

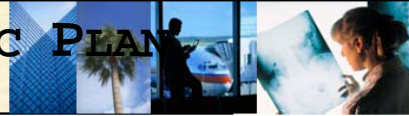
E. Sign Guidelines V-46

E.1 General Sign Program Guidelines..... V-47

**ONTARIO GATEWAY SPECIFIC PLAN
TABLE OF CONTENTS**



E.2	General Design Requirements.....	V-47
E.3	Monument and Freeway Signs.....	V-49
E.4	Business Directory and Directional Signs.....	V-50
E.5	Wall-Mounted Signs.....	V-53
E.6	Center Identification Sign.....	V-54
E.7	Temporary Signs.....	V-54
E.8	Sign Illumination.....	V-57
E.9	Prohibited Signs.....	V-58
F.	<i>Bus Shelter</i>	V-59
G.	<i>Walls and Fences</i>	V-61
G.1	General Standards and Guidelines.....	V-61
H.	<i>Site Lighting</i>	V-62
H.1	General Standards and Guidelines.....	V-62
H.2	Specific Design Guidelines.....	V-64
I.	<i>"Green" Building Standards</i>	V-65
I.1	Uniform Lighting.....	V-66
I.2	Rooftop Gardens.....	V-66
I.3	Use of Energy-Efficient Materials (Wood).....	V-67
I.4	Recycling of Building Materials/Products.....	V-67
I.5	Environmental Best Practices for Medical Facilities.....	V-67
 <u>VI: ADMINISTRATION & INFRASTRUCTURE DEVELOPMENT</u>		
A.	<i>Administration</i>	VI-1
B.	<i>Substantial Conformance</i>	VI-1
B.1	Guidelines for Determination of Substantial Conformance.....	VI-1
C.	<i>Specific Plan Amendment</i>	VI-2
D.	<i>Site Development Plans, Subdivisions, and Environmental Review</i>	VI-3
E.	<i>Mitigation of Potential Environmental Impacts</i>	VI-3
F.	<i>Financing and Maintenance of Improvements</i>	VI-4
G.	<i>Development and Infrastructure Sequencing</i>	VI-4



FIGURES AND TABLES

FIGURES

1.1	Regional and Project Location Map	I-6
1.2	Existing On-Site and Surrounding Land Uses	I-8
1.3	Existing General Plan and Zoning Designations.....	I-9
1.4	Redevelopment Project Area 1	I-11
2.1	Specific Plan Planning Areas	II-2
2.2	Conceptual Site Plan for Planning Areas.....	II-3
3.1	Circulation Plan	III-7
3.2	Typical Street Sections.....	III-8
3.3	Conceptual Guasti Road Bus Turnouts	III-11
4.1	Existing and Conceptual Domestic Water Plan	IV-2
4.2	Conceptual Recycled Water Plan	IV-4
4.3	Existing and Proposed Sewer System.....	IV-7
4.4	Conceptual Water Quality/Storm Drain Plan.....	IV-12
4.5	Existing and Conceptual Utilities Service Plan	IV-15
5.1	Haven Avenue Streetscape Section	V-34
5.2	Haven Avenue Streetscape Section	V-35
5.3	Guasti Road Streetscape	V-36
5.4	Primary Entry Statements	V-38
5.5	Typical Guasti Road Entryways.....	V-39
5.6	South Perimeter Landscape.....	V-40
5.7	Extended Access Easement Landscaping.....	V-41
5.8	Schematic Freeway Sign	V-51
5.9	Conceptual Project Identification Sign.....	V-55
5.10	Primary Entry Statement.....	V-56

TABLES

2.A	Potential Land Use Concept by Planning Areas	II-4
2.B	Permitted Land Uses by Planning Areas	II-6
2.C	General Planning Area Development Standards.....	II-15
2.D	Noise Standards – Maximum Exterior Noise Level	II-28
2.E	Noise Levels and Duration.....	II-28
3.A	Traffic Study Potential Land Use Scenarios	III-3
3.B	Traffic Study Projected Trips.....	III-4

**ONTARIO GATEWAY SPECIFIC PLAN
TABLE OF CONTENTS**



3.C Ontario Gateway Conceptual Land Use III-4
3.D Ontario Gateway Specific Plan Projected Trips III-4

4.A Water Demand Equivalents for Commercial..... IV-3
4.B Estimated Daily Water Demand..... IV-5
4.C Estimated Potable and Recycled Water Service..... IV-5
4.D Peaking Demands for Water Service IV-5
4.E Source Control BMPs IV-10
4.F Storm Drainage Maintenance Matrix..... IV-13

5.A Plaza Sizes and Calculations..... V-31
5.B Landscape Maintenance Matrix V-32
5.C Plant Palette..... V-43
5.D Summary of Lighting Design Criteria..... V-62