

**Spanish Colonial Revival—1915 to Present**



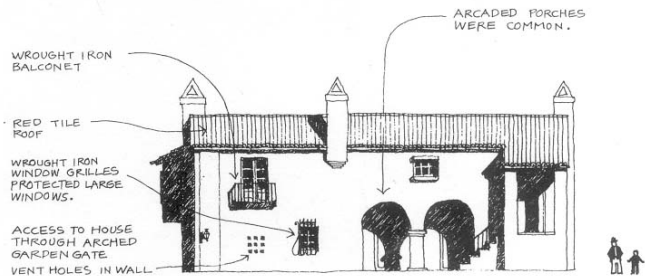
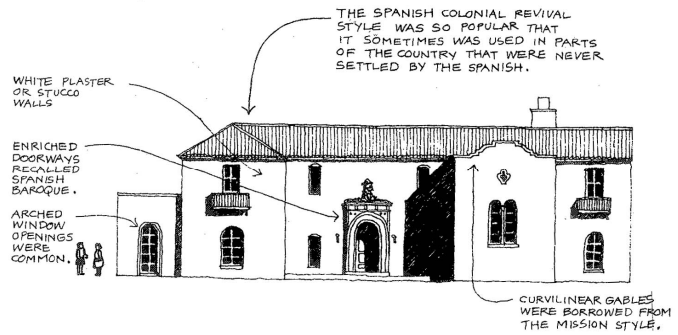
The Spanish Colonial style was developed as a direct result of the Mission style. The style became popular after the 1915 San Diego Exposition, which showcased the style. Most formal designs are influenced more by Italian architecture, and most informal designs were influenced by Spanish and Portuguese architecture.

There are only two known examples of the style in Ontario. The first is located on Princeton Street, within the College Park Historic District, and is pictured above. The second is the Paul Williams designed Post Office, located on Transit Street, pictured right. The most famous is the Adamson House, located in Malibu, pictured below.



**Common Features**

- Stucco surfaces
- Low-pitched tile roofs
- Limited number of openings
- Opening deeply recessed into walls
- Close relation to outdoors through use of terraces
- Use of pergolas
- Formal axial garden design
- Use of decorative ironwork on windows, doors, balconies, and roof supports



**Windows**

Windows were typically individual casement, with wood frames. Occasionally, metal frames were used to replicate the ironwork used on other details in the house

**Doors**

Doors were typically carved wood, with a stained finish.

**itectural Features**

*Colors*

Homes were typically painted white, with a second trim color. Occasionally, a third color was used on the window frames.