

**PLANNING  
APPEAL**

Permit No. PSG-P12-007

By: [Signature]

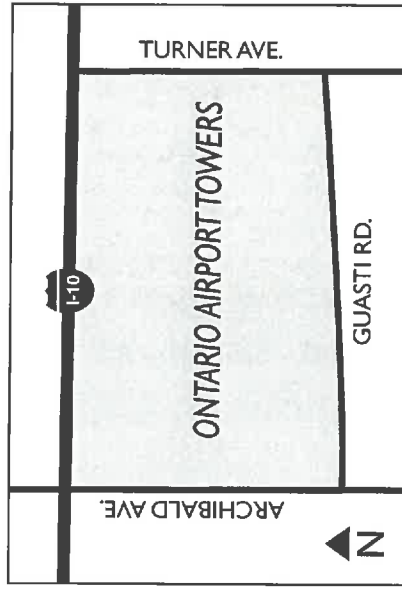
Date: 11/2-11/12

**SIGN PROGRAM  
FOR**

**ONTARIO AIRPORT TOWERS**

PROPERTY OWNER:  
PGP PARTNERS  
21068 BAKE PIKWAY #200  
LAKE FOREST, CA 92630  
(949) 421.2552  
(949) 421.0989 fax

PROGRAM DESIGNER:  
JB3D  
731 N. MAIN STREET  
ORANGE, CA 92868  
(714) 744-2300 x221  
(714) 744-8061 fax



ADDRESS: 2855 E. Guasti Rd., 2777 E. Guasti Rd.  
\*THIS SIGN PROGRAM WILL ALSO APPLY TO ALL FUTURE BUILDINGS ON THE PROJECT SITE.  
ANY FUTURE SIGNAGE WILL BE SUBJECT TO THE REVIEW PROCESS & STANDARDS SET FORTH  
IN THIS SIGN PROGRAM.

ZONING: Specific Plan  
PLANNING AREA: Guasti Historical District  
BUILDING STORIES: Six  
PARCEL AREA: 22.2 Acres

October 19, 2012

SIGN TYPE	SIGN-SPECIFIC PAGE	DESCRIPTION	SIGN LOCATION (SEE PAGE 3 & 6 OF SIGN PROGRAM GENERAL LOCATION OF PERMITTED SIGNS)	MAX. QUANTITY	MAX. SIGN AREA	MAX. LETTER HEIGHT	MAX. SIGN STRUCTURE HEIGHT AT MIDPOINT	LOGOS ALLOWED	ILLUMINATION PERMITTED
1	4	Main Primary Monument	Ground	1	95 sq	18"	5'-1"	YES	YES
2	5	Secondary Monument	Ground	1	32 sq	9 3/4"	4'-6"	YES	YES
3	6	Tenant Monument	Ground	2	35 sq	8"	7'-0"	YES**	NO
4	8	Office Tenant ID	Wall	2***	132 sq	48"	-----	YES	YES
5	9	Office Secondary Tenant ID	Wall	4*	42 sq	24"	-----	NO****	YES
6	10	Retail Shelf Tenant ID	Wall	11	28 sq	24"	-----	YES	YES
7	11	Retail Wall Tenant ID	Wall	2	28 sq.	24"	-----	YES	YES
8	12	Art Node Plaques	Ground	6	3.18 sq	-----	2'-10"	YES	NO

\* Per building, Two per elevation  
 \*\* Retail Building Only  
 \*\*\* Only One Sign Per Elevation  
 \*\*\*\* 5.13 Location allowed to have logo

# LEGEND

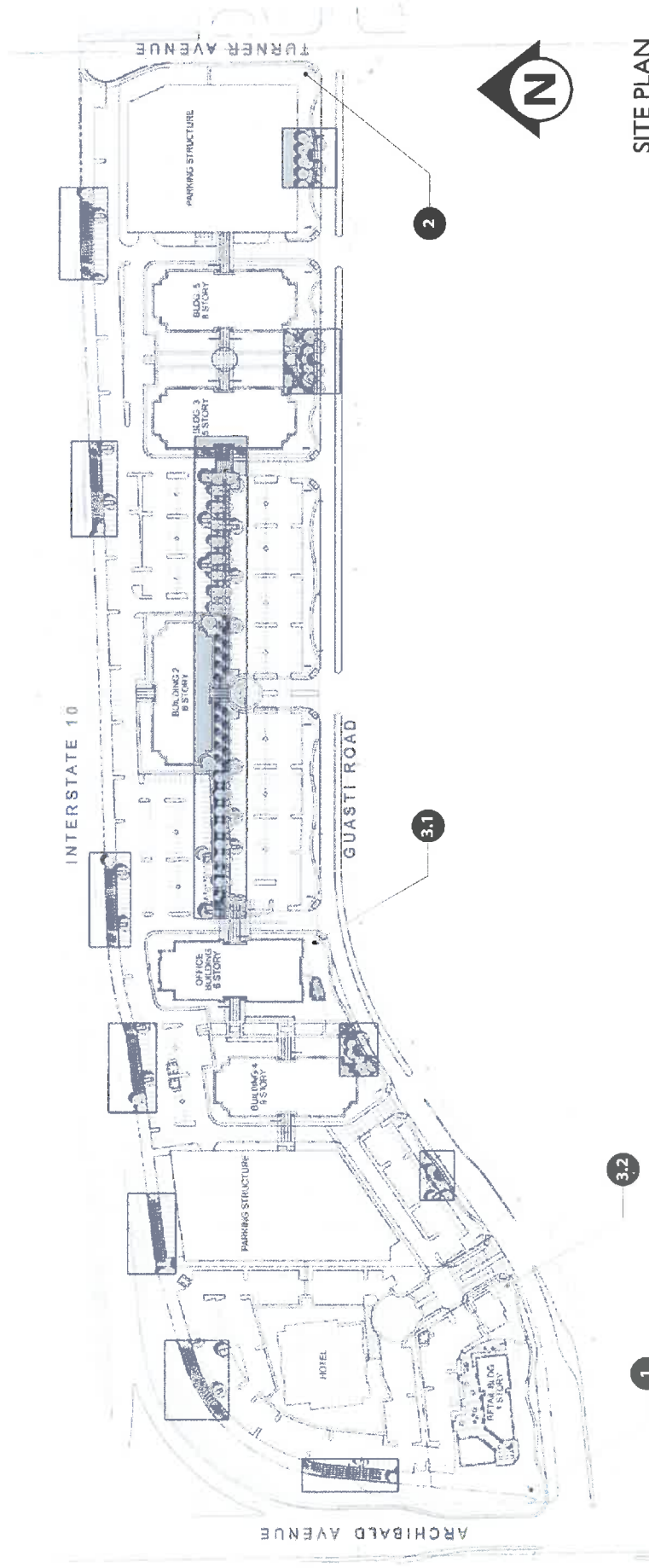
— SIGN TYPE

3.1

— SIGN NUMBER

- 1 Main Primary Monument
- 2 Secondary Monument
- 3 Tenant Monument

SITE PLAN FOR SIGN TYPES 1, 2, 3  
 FOR SIGN TYPES 4-7 REFER TO PAGE 7, FOR SIGN TYPE 8 REFER TO PAGE 13



SITE PLAN  
 GROUND MONUMENT SIGNAGE

# PAGE 3

ONTARIO AIRPORT TOWERS

SIGN PROGRAM  
 CASE #PSGP08-004

October 19, 2012

# SIGN TYPE I

## MAIN PRIMARY MONUMENT

**Purpose:** To identify the project to motorists on Guasti Rd.

**Maximum Number:** One

**Location:** Outside of sight distance triangles and public right-of-way in accordance with the City of Ontario. 10-foot minimum from face of public street curb, 2-foot minimum from back of sidewalk. Sign location will be coordinated with landscape, including hedges and street trees. Sign to be installed at ground level. See page 4.1 for exact location.

**Orientation:** Angled to face intersection.

**Sign Copy:** "Ontario Airport Towers"

**Maximum Sign Height:** 5'-1" high. Sign will not exceed twelve feet above the curb elevation.

**Maximum Sign Width:** 27'-4" wide.

**Maximum Sign Area:** 95 square feet.

**Maximum Letter Size:** 1'-6" inches high.

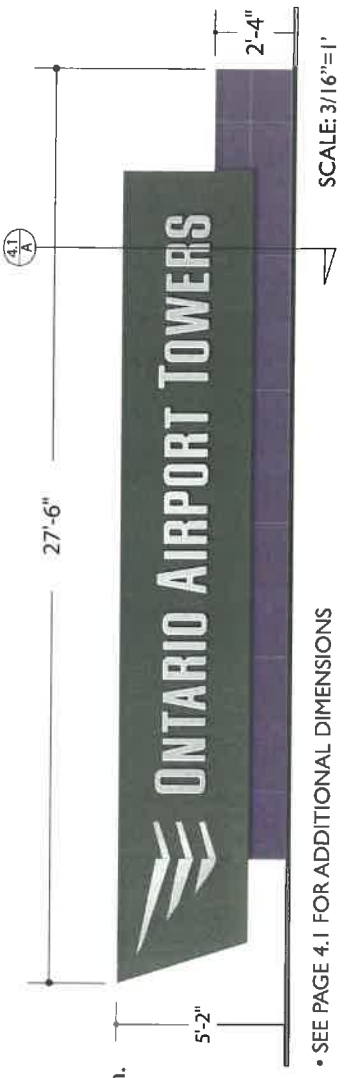
**Sign Construction/Material:** Refer to page 4.1 for specific data in regards to materials & construction.

**Illumination:** Halo illuminated channel letters. Lighting shall be designed so as not to cause glare to motorists.

**Logo:** Shown

**Letterstyle:** California Grotesk

**Color:** Matthews MP20147 "DK Warm Gray" and Matthews Brushed aluminum.



SIGN TYPE I  
ELEVATION / SPECIFICATIONS

PAGE 4

ONTARIO AIRPORT TOWERS  
SIGN PROGRAM  
CASE # PSGP08-004

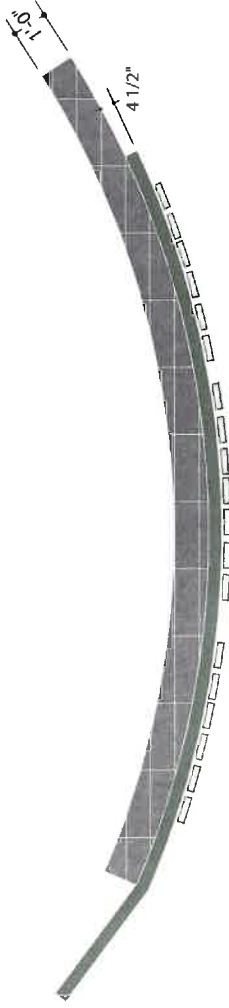
• All future developments must conform to this sign program  
October 19, 2012

**DESIGN NOTES:**

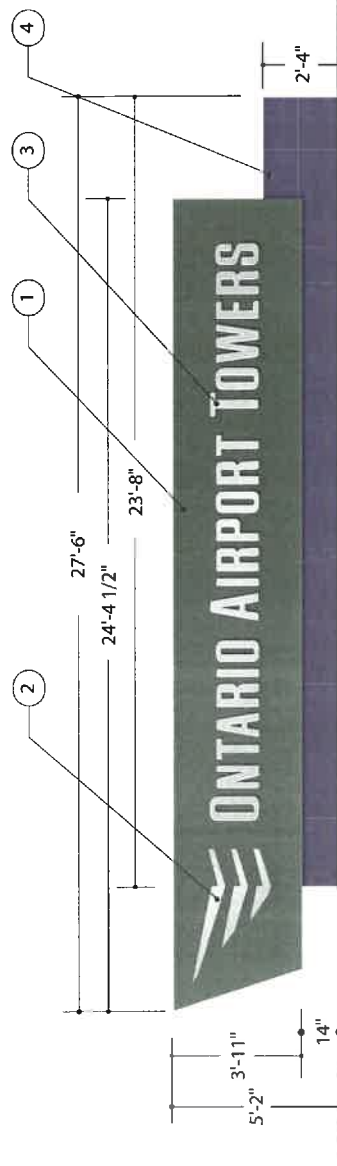
1. FABRICATED .090 ALUMINUM CABINET PAINTED MATTHEWS MP20147 "DK WARM GRAY"
2. SURFACE PAINTED GRAPHICS TO BE MATTHEWS BRUSHED ALUMINUM
3. 3" DEEP HALO LIT REVERSE PAN CHANNEL LETTERS TO BE PAINTED MATTHEWS BRUSHED ALUMINUM
4. BLUE LAGOS GRANITE OVERLAY ON BASE OF SIGN



**(A) SECTION DETAIL**  
SCALE: 3/8" = 1'



**PLAN VIEW**  
SCALE: 3/16" = 1'



**ELEVATION VIEW**  
SCALE: 3/16" = 1'

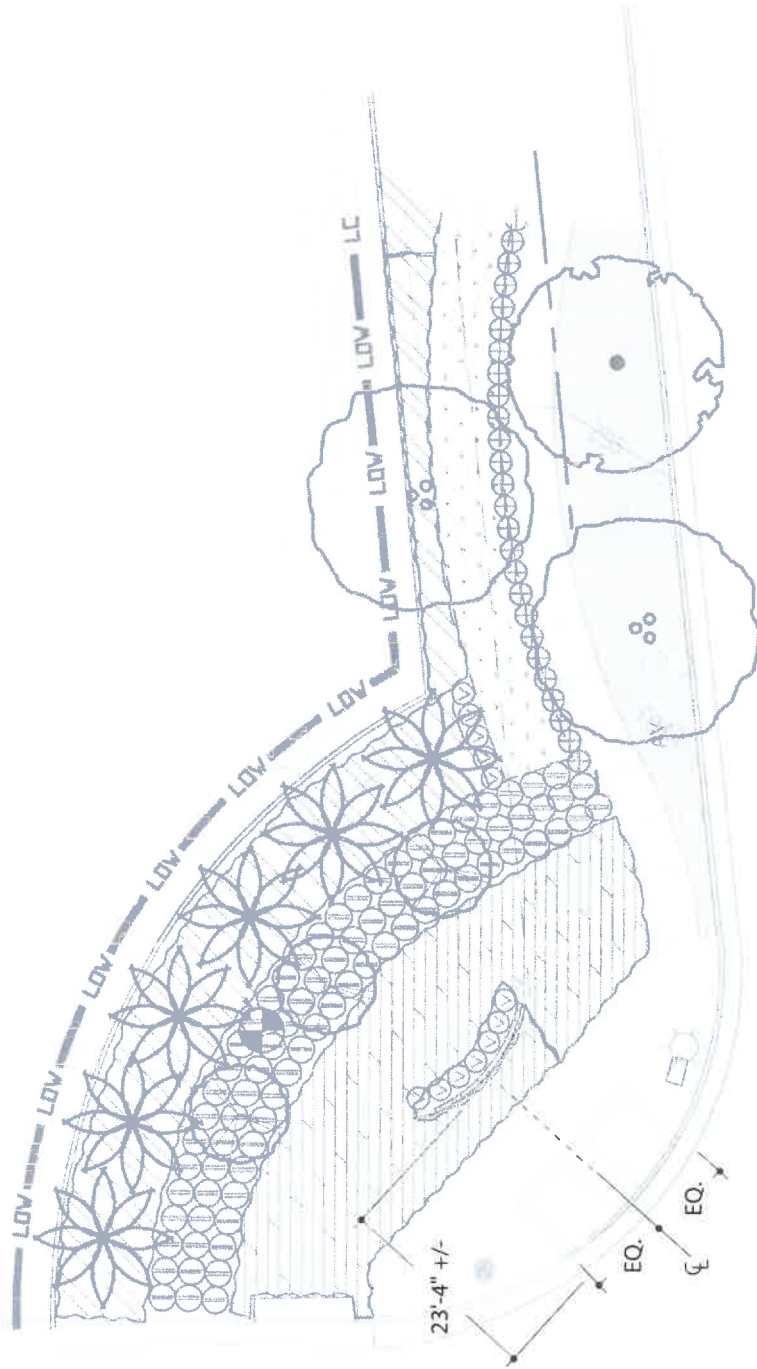
SIGN TYPE I  
CONSTRUCTION SPECIFICATIONS

**PAGE 4.1**

ONTARIO AIRPORT TOWERS

SIGN PROGRAM  
CASE # PSGP08-004

October 19, 2012



SIGN TYPE I  
LOCATION

# PAGE 4.2

ONTARIO AIRPORT TOWERS

SIGN PROGRAM  
CASE # PSGP08-004



0 10 20 40 60

October 19, 2012

Purpose: To identify the project to motorists on Guasti Rd.

Maximum Number: One

Location: Outside of sight distance triangles and public right-of-way in accordance with the City of Ontario. 10-foot minimum from face of public street curb, 2-foot minimum from back of sidewalk. Sign location will be coordinated with landscape, including hedges and street trees. Sign to be installed at ground level. See page 5.2 for exact location.

Orientation: Angled to face intersection.

Sign Copy: "Ontario Airport Towers"

Maximum Sign Height: 4'-6" high. Sign will not exceed twelve feet above the curb elevation.

Maximum Sign Width: 14'-0" wide.

Maximum Sign Area: 32 square feet.

Maximum Letter Size: 9 3/4" inches high.

Sign Construction/Material: Refer to page 5.1 for specific data in regards to materials & construction.

Illumination: Halo illuminated channel letters. Lighting shall be designed so as not to cause glare to motorists.

Logo: Shown

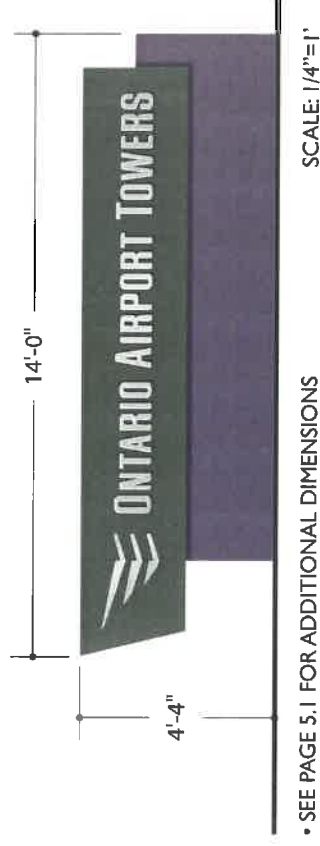
Letterstyle: California Grotesk

Color: Matthews MP20 | 47 "DK Warm Gray" and Matthews Brushed aluminum.

• All future developments must conform to this sign program

October 19, 2012

# SIGN TYPE 2 SECONDARY MONUMENT



• SEE PAGE 5.1 FOR ADDITIONAL DIMENSIONS

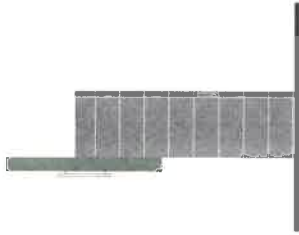
SCALE: 1/4"=1'

SIGN TYPE 2  
ELEVATION / SPECIFICATIONS

PAGE 5

ONTARIO AIRPORT TOWERS

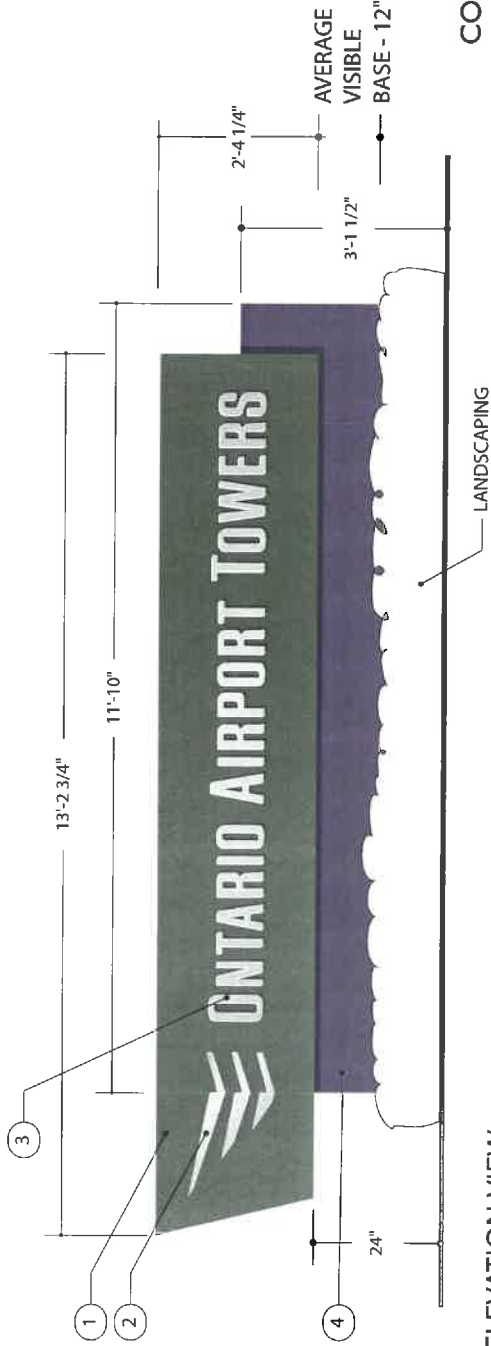
SIGN PROGRAM  
CASE # PSGP08-004



**SIDE VIEW**  
SCALE: 3/8" = 1'



**PLAN VIEW**  
SCALE: 3/8" = 1'



**ELEVATION VIEW**  
SCALE: 3/8" = 1'

**DESIGN NOTES:**

1. FABRICATED .090 ALUMINUM CABINET PAINTED MATTHEWS MP20147 "DK WARM GRAY"
2. PAINTED GRAPHICS TO BE MATTHEWS BRUSHED ALUMINUM
3. 1/2" FCO ALUM LETTERS PAINTED MATTHEWS BRUSHED ALUMINUM EXTERNALLY FLOOD LIT.
4. BLUE LAGOS GRANITE OVERLAY ON BASE OF SIGN

SIGN TYPE 2  
CONSTRUCTION SPECIFICATIONS

**PAGE 5.1**

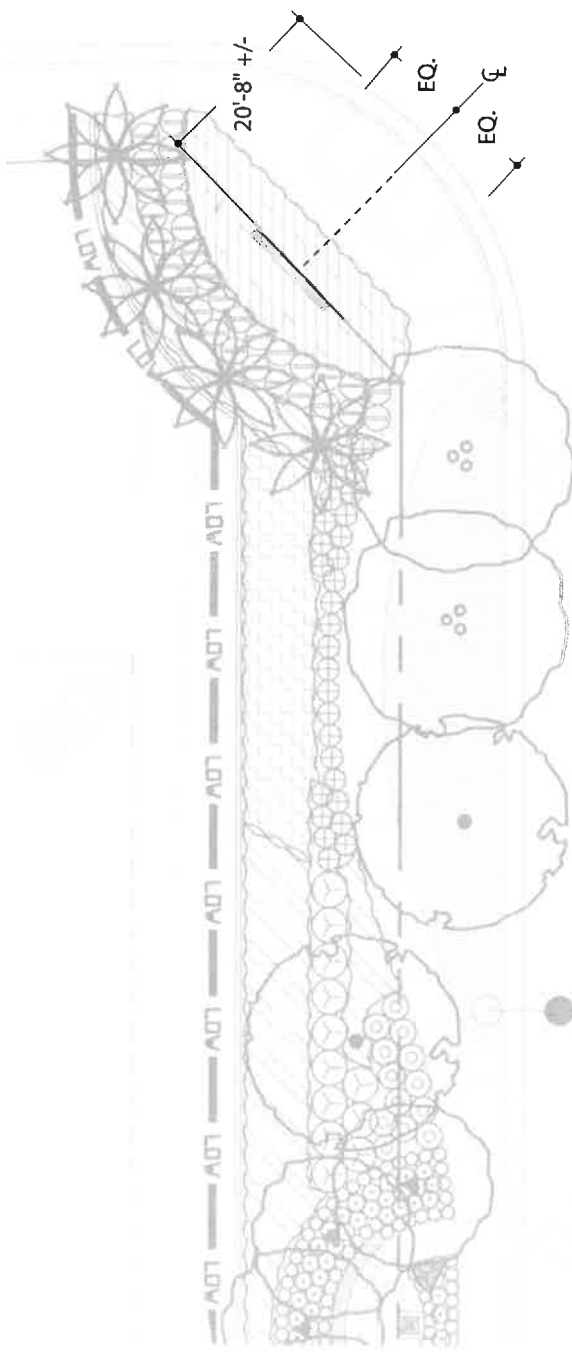
ONTARIO AIRPORT TOWERS

SIGN PROGRAM  
CASE # PSGP08-004

October 19, 2012



TURNER AVENUE



GUASTI ROAD

SIGN TYPE 2  
LOCATION

PAGE 5.2

ONTARIO AIRPORT TOWERS

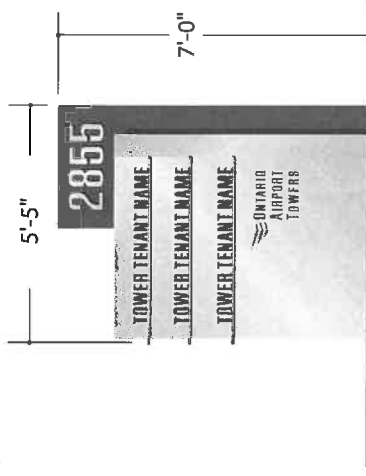
SIGN PROGRAM  
CASE # PSGP08-004



0 10 20 40 60

October 19, 2012

# SIGN TYPE 3 TENANT MONUMENT



• SEE PAGE 6.1 SCALE: 1/4"=1' FOR ADDITIONAL DIMENSIONS

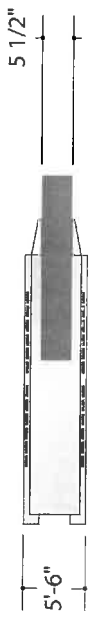
- Purpose:** To identify the project to motorists on Guasti Rd.
- Maximum Number:** One per building at the project perimeter.
- Location:** Outside of sight distance triangles and public right-of-way in accordance with the City of Ontario. 10-foot minimum from face of public street curb, 2-foot minimum from back of sidewalk. Sign location will be coordinated with landscape, including hedges and street trees. Sign to be installed at ground level. See pages 6.2 & 6.3 for exact location.
- Orientation:** Perpendicular to street frontage.
- Sign Copy:** "Ontario Airport Towers", address & tenant names. Maximum 3 tenants.
- Maximum Sign Height:** 7'-0" high. Sign will not exceed twelve feet above the curb elevation.
- Maximum Sign Width:** 5'-5" wide.
- Maximum Sign Area:** 35 square feet.
- Maximum Letter Size:** 8" inches high.
- Sign Construction/Material:** Refer to page 6.1 for specific data in regards to materials & construction.
- Illumination:** External illumination will be permitted. Lighting shall be designed so as not to cause glare to motorists.
- Logo:** Allowed only on retail monuments.
- Letterstyle:** California Grotesk unless on retail monument.
- Color:** Sign copy color to be painted to match Matthews MP20147 "DK Warm Gray"

SIGN TYPE 3  
ELEVATION / SPECIFICATIONS

PAGE 6

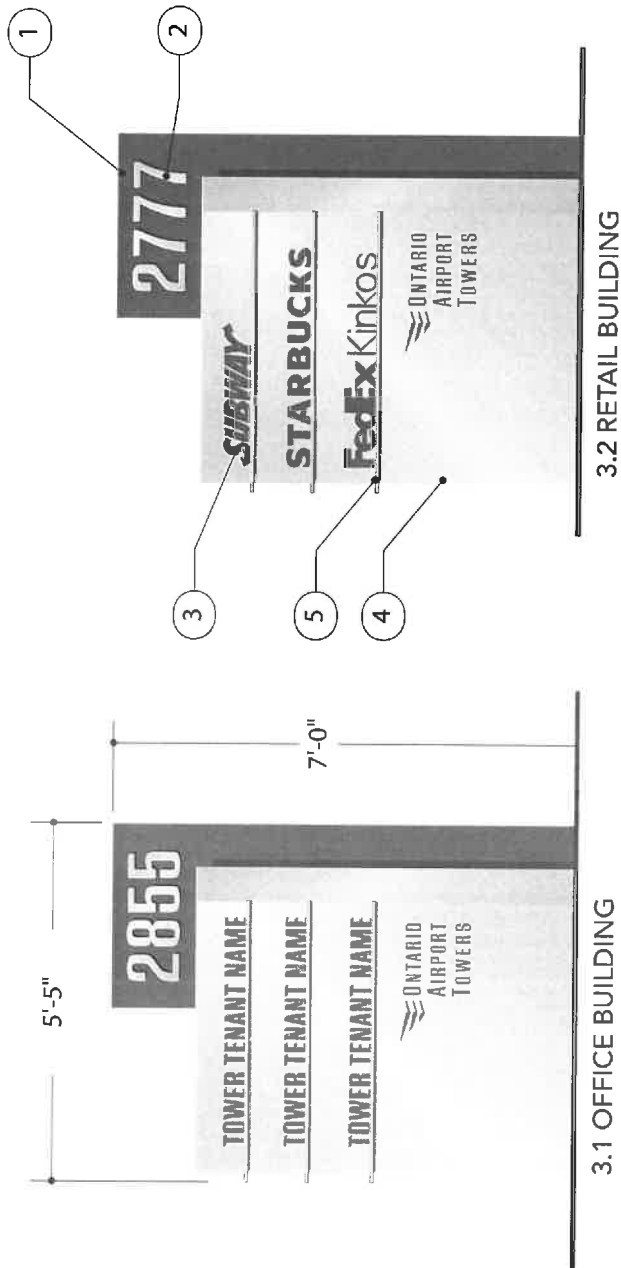
ONTARIO AIRPORT TOWERS

• All future developments must conform to this sign program  
October 19, 2012  
SIGN PROGRAM  
CASE # PSGP08-004



PLAN VIEW

SCALE: 3/8" = 1'



ELEVATION VIEW

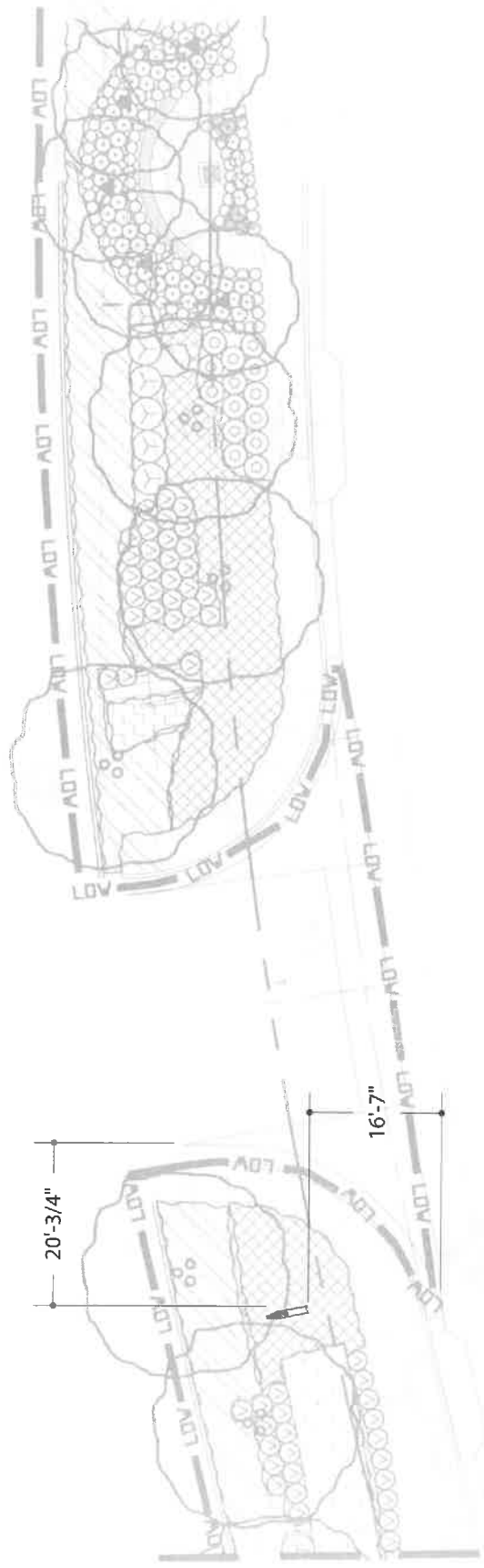
SCALE: 3/8" = 1'

DESIGN NOTES:

1. FABRICATED .090 ALUMINUM CABINET PAINTED MATTHEWS MP20147 "DK WARM GRAY"
2. 1/4" THICK ALUMINUM LETTERS PAINTED MATTHEWS BRUSHED ALUMINUM PINNED 1/8" OFF SURFACE.
3. 1/2" ALUMINUM LETTERS PAINTED MATTHEWS MP20147 "DK WARM GRAY".
  - TENANT INFO IS BASE MOUNTED TO RAIL
4. FABRICATED .090 ALUMINUM CABINET PAINTED MATTHEWS BRUSHED ALUMINUM
5. ALUMINUM BAR PAINTED MATTHEWS BRUSHED ALUMINUM

SIGN TYPE 3  
CONSTRUCTION SPECIFICATIONS

10/19/12

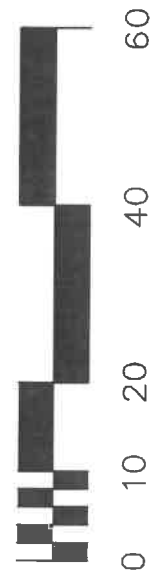


SIGN TYPE 3.1  
LOCATION

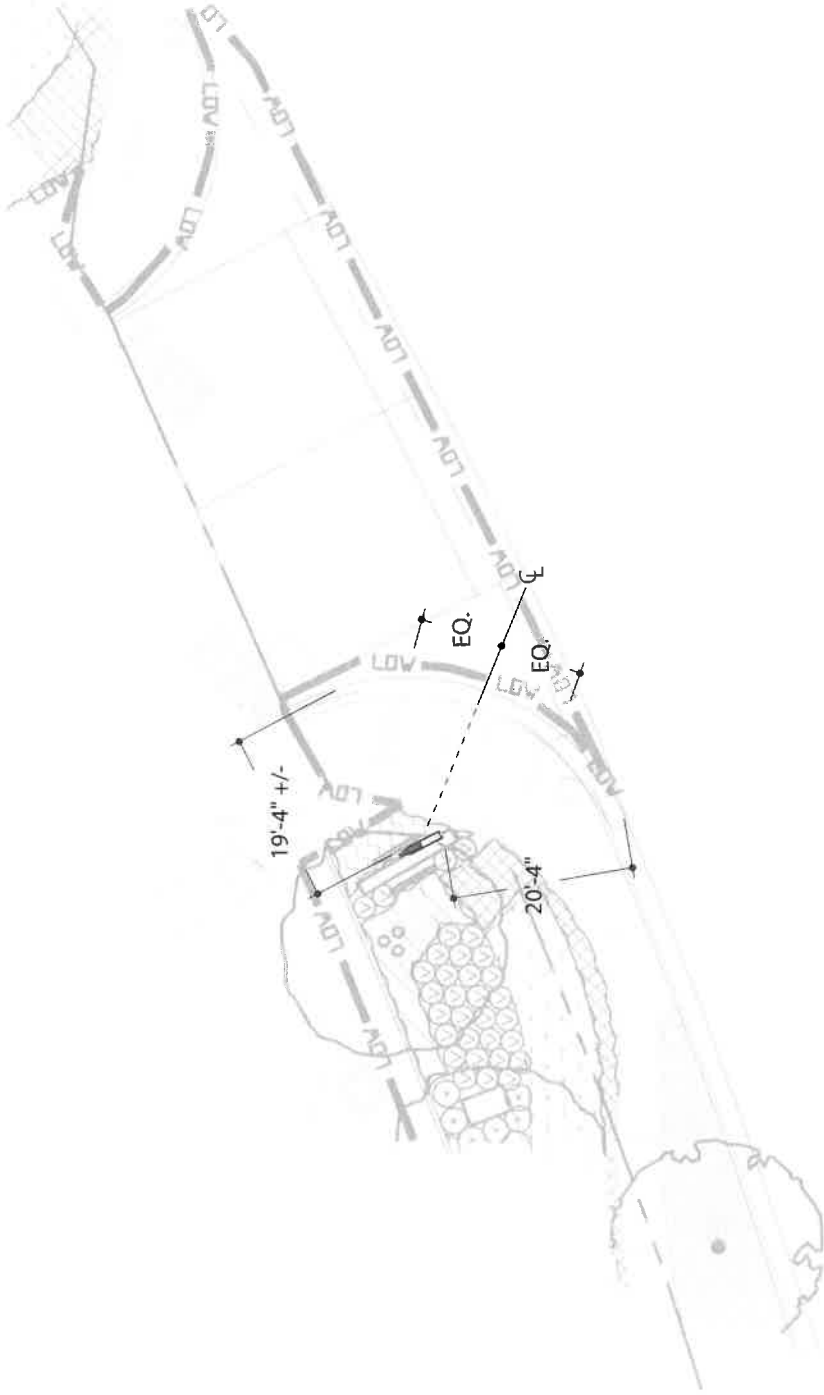
# PAGE 6.2

ONTARIO AIRPORT TOWERS

SIGN PROGRAM  
CASE # PSGP08-004



October 19, 2012

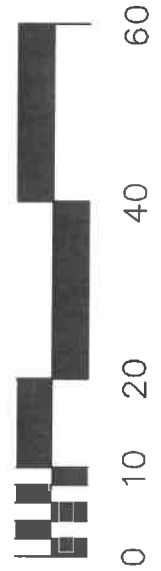


SIGN TYPE 3.2  
LOCATION

# PAGE 6.3

ONTARIO AIRPORT TOWERS

SIGN PROGRAM  
CASE # PSGP08-004



October 19, 2012

# LEGEND

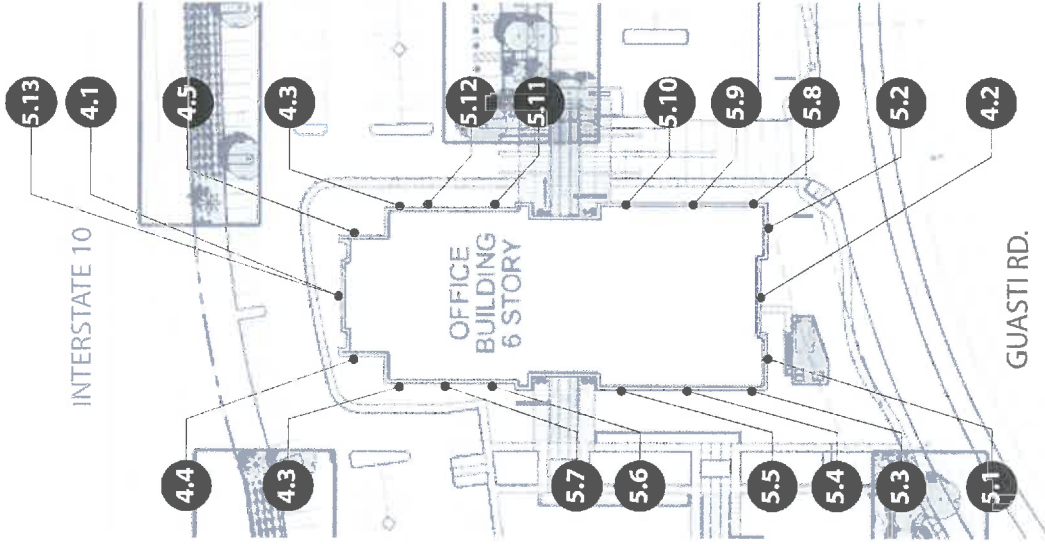
— SIGN TYPE

● 4.1

— ALTERNATE LOCATIONS

# SITE PLAN FOR SIGN TYPE 4 & 5

- 4 Primary Tenant ID  
- Top of Bldg Signage
- 5 Secondary Tenant ID  
- Eyebrow Signage



SITE PLAN  
BUSINESS - ON BUILDING SIGNAGE

PAGE 7

ONTARIO AIRPORT TOWERS

Only approved locations are shown. For allowable quantities, see page 11.

October 19, 2012

SIGN PROGRAM  
CASE # PSGP08-004

# SIGN TYPE 4

## OFFICE PRIMARY

### TENANT ID

To identify primary business name occupying multi-story buildings. Primary tenant are defined by building owner as an occupant who is deemed by the individual building landlord, per their lease, to have the right to have their company name on the top of the building.

One per elevation. Two per building, located at opposite building elevations. (Signs may be located at adjacent elevations, at opposite ends of the facades. Subject to the review of the Building Ownership Association). Five locations are offered, Two locations are permitted, with exception to locations 4.4 & 4.5 which count as one sign.

At top of building. Only approved locations as indicated in exhibits on page 8.1 & 8.2.

Parallel to wall toward street, parking lot, freeway or pedestrian area.

One single-line-copy business name and or logo per building only.

Logo: 4'-0" high  
 Letters: 4'-0" high (not to exceed eaveline)  
 Area: 132 square feet

Individual letters and logos only. No cabinet signs or cloud signs. All signs on glass will have white polycarbonate faces. All signage in front of vision glass requires enclosed soffits & opaque glass. All signs on stone will be reverse pan channel letters.

Face lit illumination permitted on glass. No exposed neon lighting allowed. If located on, stone halo-illumination must be used.

Permitted, must be approved by the Building Ownership Association.

Lettering must be approved by the Building Ownership Association.

Sign copy color to be white with silver returns to match Matthews "Brushed Aluminum" if located on glass. If located on stone sign faces & returns will be painted to match Matthews MP20147 "Dk Warm Gray".



North Elevation\*  
 SCALE: 1/32" = 1'

\*Typical Elevation - For full elevations see pages 8.1 thru 8.3

SIGN TYPE 4  
 ELEVATION / SPECIFICATIONS

# PAGE 8

ONTARIO AIRPORT TOWERS

SIGN PROGRAM  
 CASE # PSGP08-004

All future developments must conform to this sign program  
 October 19, 2012

# SIGN TYPE 4 OFFICE PRIMARY TENANT ID ELEVATIONS



4.3\* & 4.5 - EAST ELEVATION  
SCALE: 1/32" = 1'

SIGN TYPE 4  
ELEVATIONS

PAGE 8.1

\* 4.3 consists of (2) signs: one on East & one matching on the West elevation. These two signs count as one against total signage count due to their diminutive size.

\*\* 4.5 May have only one sign

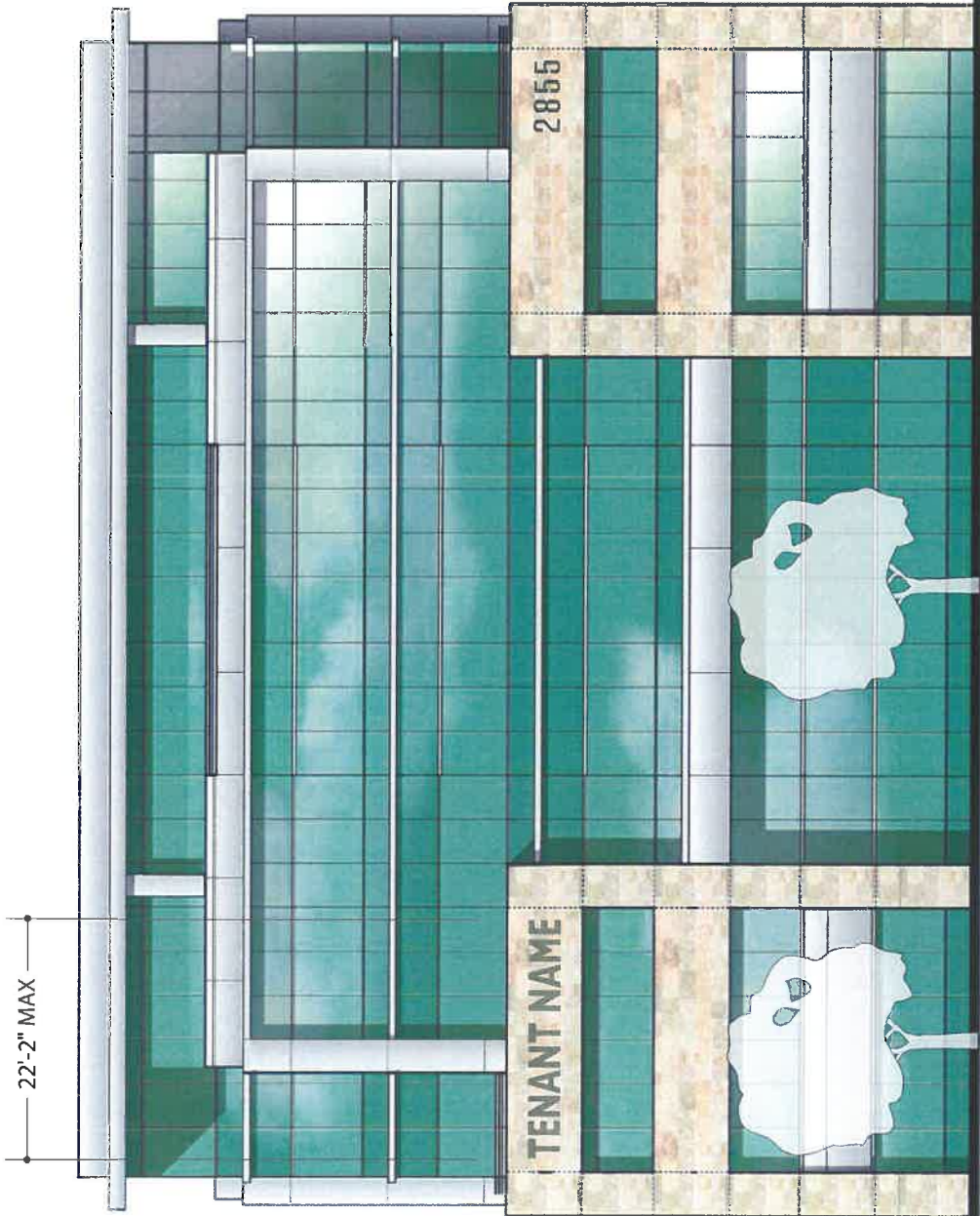
ONTARIO AIRPORT TOWERS

SIGN PROGRAM  
CASE # PSGP08-004

October 19, 2012



# SIGN TYPE 4 OFFICE PRIMARY TENANT ID ELEVATIONS



3'-0"

MAX SIGN HEIGHT  
ALLOWED AT  
THIS LOCATION

4.2 - SOUTH ELEVATION  
SCALE: 1/16" = 1'

SIGN TYPE 4  
ELEVATIONS

PAGE 8.2

ONTARIO AIRPORT TOWERS

SIGN PROGRAM  
CASE # PSGP08-004

October 19, 2012

4.1

**SIGN TYPE 4**  
OFFICE PRIMARY  
TENANT ID  
ELEVATIONS



4.1 - NORTH ELEVATION  
SCALE: 1/16" = 1'

SIGN TYPE 4  
ELEVATIONS

**PAGE 8.3**

ONTARIO AIRPORT TOWERS

SIGN PROGRAM  
CASE # PSGP08-004

October 19, 2012

**SIGN TYPE 4**  
OFFICE PRIMARY  
TENANT ID  
ELEVATIONS



4.3\*

4.3\* - ALTERNATE  
LOCATION



4.3 - WEST ELEVATION

SCALE: 1/32" = 1'

SIGN TYPE 4  
ELEVATIONS

**PAGE 8.4**

ONTARIO AIRPORT TOWERS

\* 4.3 consists of (2) signs: one on West & one matching on the East elevation. These two signs count as one against total signage count due to their diminutive size.

SIGN PROGRAM  
CASE # PSGP08-004

October 19, 2012

# SIGN TYPE 5 EYEBROW SIGNAGE

**Purpose:** To identify secondary business names at ground level. Secondary tenants are defined by building owner as an occupant who is deemed by the individual building landlord, per their lease, to have the right to have their company name on the building at the eyebrow level.

**Maximum Number:** Four per building. Two per elevation. An individual tenant may not have more than one sign per building elevation.

**Location:** At the ground level fascia panel above the first floor, with 1/2 letter height of space above and below the sign. No part of the sign may be located within 1/2 letter height to the extreme left or right of the building elevation. See pages 9.2 - 9.5 for exhibits.

**Orientation:** Parallel to wall toward street, parking lot or pedestrian area.

**Sign Copy:** One single-line-copy business name and logo per building only.

**Max. Sign Area & Size:**  
**Letters:** 24" high (not to exceed eaveline)  
**Area:** 54 square feet

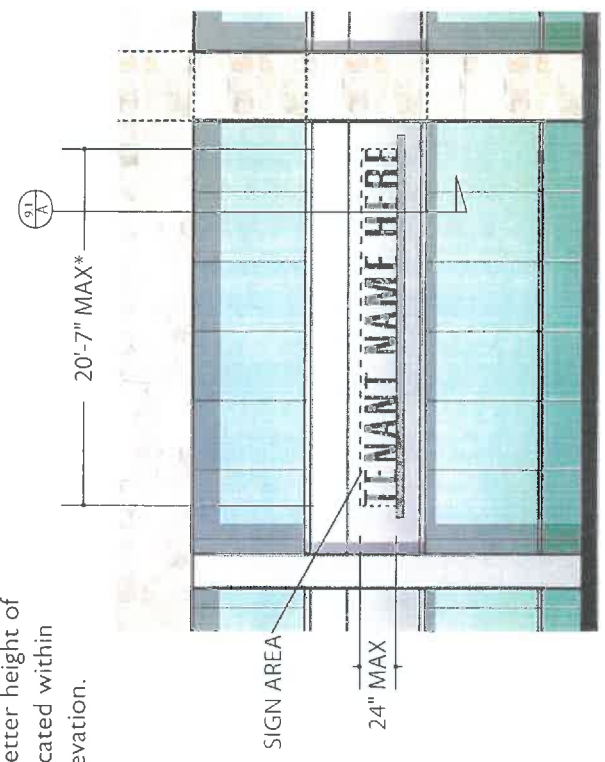
**Sign Construction/Material:**  
 Individual reverse pan channel letters and logos only.  
 No cabinet signs or cloud signs. Fabricated from aluminum.  
 See page 9.1 for more details.

**Illumination:** Halo illuminated. No exposed neon lighting allowed.

**Logo:** Logo allowed on 5.13 location only, all others prohibited

**Letterstyle:** California Grotesk or Corporate typeface, must be approved by landlord

**Color:** Sign copy color to be painted to match Matthews MP20147 "Dk Warm Gray".



Typical Elevation\*  
 Scale: 3/32" = 1'  
 \*For full elevations see pages 9.2 thru 9.5

SIGN TYPE 5  
 ELEVATION / SPECIFICATIONS

PAGE 9

ONTARIO AIRPORT TOWERS

SIGN PROGRAM  
 CASE # PSGP08-004

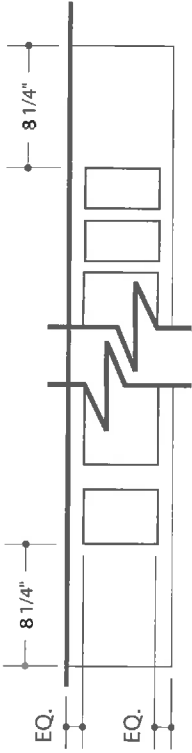
• all future developments must conform to this sign program  
 \* 27'-0" on location 5.13

October 19, 2012

# SIGN TYPE 5

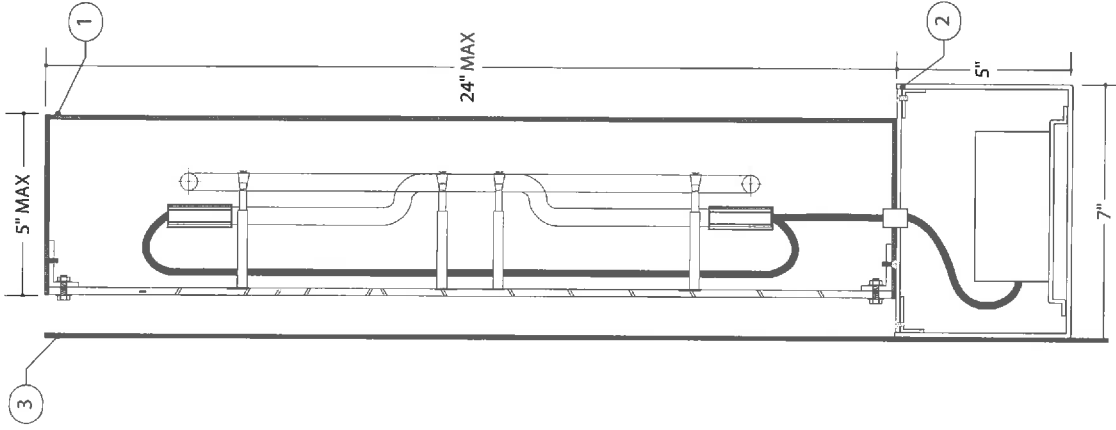
## OFFICE SECONDARY

### TENANT ID DETAILS



TOP VIEW

SCALE: 1" = 1'



SECTION VIEW

SCALE: 1:5

DESIGN NOTES:

1. 5" DEEP FABRICATED REVERS PAN CHANNEL LETTER.
2. FABRICATED ALUMINUM RAIL / WIREWAY PAINTED MATTHEWS BRUSHED ALUMINUM.
3. BUILDING FACE

SIGNTYPE 5  
DETAILS

PAGE 9.1

ONTARIO AIRPORT TOWERS

SIGN PROGRAM  
CASE # PSGP08-004

October 19, 2012

**SIGN TYPE 5**  
OFFICE SECONDARY  
TENANT ID  
ELEVATIONS



5.1 & 5.2 - SOUTH ELEVATION  
SCALE: 1/16" = 1'

SIGN TYPE 5  
ELEVATIONS

ONTARIO AIRPORT TOWERS

SIGN PROGRAM  
CASE # PSGP08-004

October 19, 2012



5.8 5.9 5.10 5.11 5.12

# SIGNTYPE 5 OFFICE SECONDARY TENANT ID ELEVATIONS



5.4 & 5.5 - EAST ELEVATION

SCALE: 1/32" = 1'

SIGNTYPE 5  
ELEVATIONS

## PAGE 9.3

ONTARIO AIRPORT TOWERS

SIGN PROGRAM  
CASE # PSGP08-004

October 19, 2012

# SIGN TYPE 5 OFFICE SECONDARY TENANT ID ELEVATIONS



- 5.7
- 5.6
- 5.5
- 5.4
- 5.3



5.1 - WEST ELEVATION  
SCALE: 1/32" = 1'

SIGN TYPE 5  
ELEVATIONS

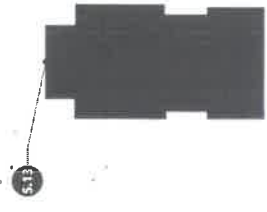
PAGE 9.4

ONTARIO AIRPORT TOWERS

SIGN PROGRAM  
CASE # PSGP08-004

October 19, 2012





**SIGN TYPE 5**  
OFFICE SECONDARY  
TENANT ID  
ELEVATIONS



SIGN TYPE 5  
ELEVATIONS

ONTARIO AIRPORT TOWERS

SIGN PROGRAM  
CASE # PSGP08-004

5.13 - NORTH ELEVATION  
SCALE: 1/16" = 1'

CAN BE PERMITTED WITHOUT RAIL

October 19, 2012

Purpose:

To identify secondary business names at ground level. Secondary tenants are defined by building owner as an occupant who is deemed by the individual building landlord, per their lease, to have the right to have their company name on the building at the eyebrow level.

Maximum Number:

One per building, per elevation. An individual tenant may not have more than one sign per building elevation.

Location:

At the third tier facade where indicated, with 1/2 letter height of space above and below the sign. No part of the sign may be located within 1/2 letter height to the extreme left or right of the building elevation. See page 9.3 for exhibit.

Orientation:

Parallel to wall toward street, parking lot or pedestrian area.

Sign Copy:

One single-line-copy business name and logo per building only.

Max. Sign Area & Size:

Letters: 36" high (not to exceed eaveline)  
Logo: 54" high  
Area: 72 square feet

Sign Construction/Material:

Individual reverse pan channel letters and logos only.  
No cabinet signs or cloud signs. Fabricated from aluminum.

Illumination:

Face illuminated. No exposed neon lighting allowed.

Logo:

Yes

Letterstyle:

California Grotesk or Corporate logotype allowed

Color:

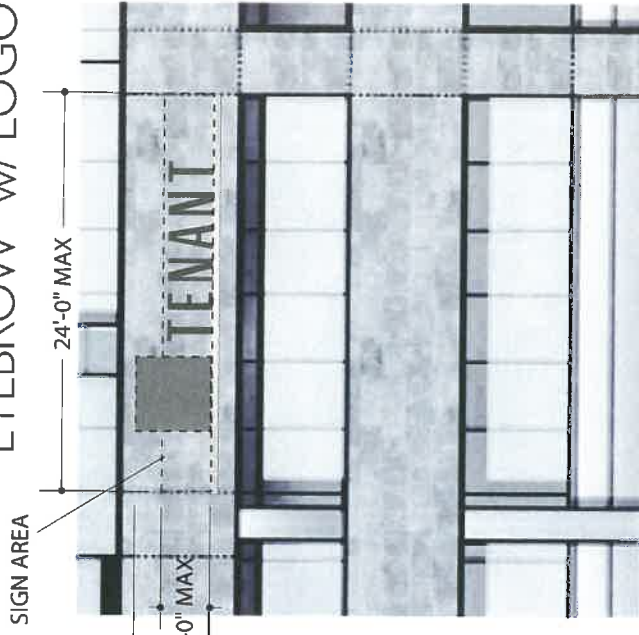
Sign copy color to be painted to match Matthews MP20147 "Dk Warm Gray" or Corporate colors allowed for copy and logo.

# SIGN TYPE 5A

## OFFICE SECONDARY

### TENANT ID

#### "EYEBROW" w/ LOGO



Typical Elevation\*  
Scale: 3/32" = 1'

\*For full elevations see page 9.3

SIGN TYPE 5A  
ELEVATION / SPECIFICATIONS

# PAGE 9.6

ONTARIO AIRPORT TOWERS

SIGN PROGRAM  
CASE # PSGP11-005

• All future developments must conform to this sign program

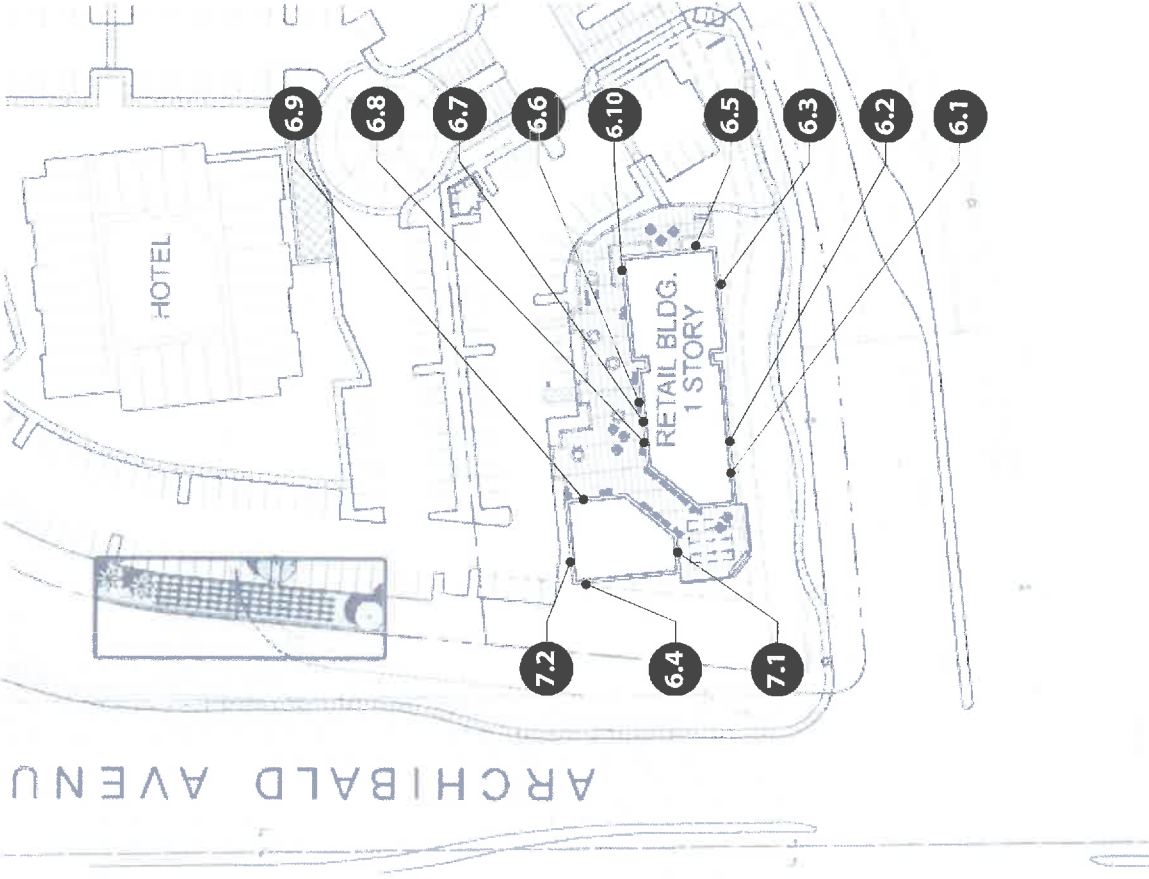
October 19, 2012

# LEGEND

SIGN TYPE



ALTERNATE LOCATIONS



# SITE PLAN FOR SIGN TYPE 6 & 7

6 Retail Shelf Tenant ID

7 Retail Wall Tenant ID

SITE PLAN  
RETAIL - ON BUILDING SIGNAGE

## PAGE 10

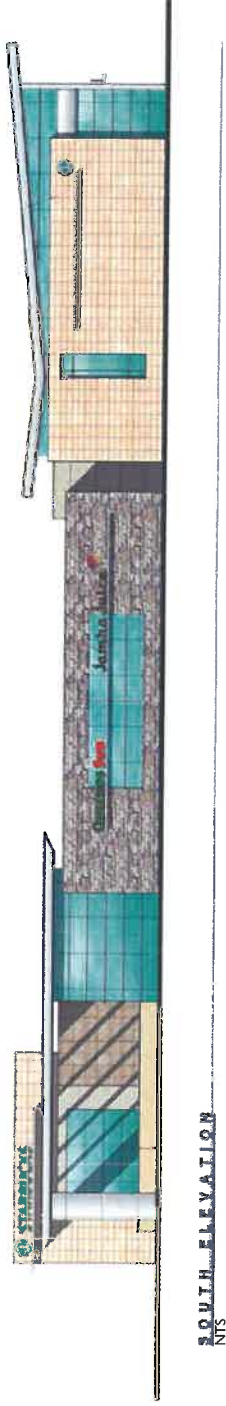
ONTARIO AIRPORT TOWERS

SIGN PROGRAM  
CASE # PSGP08-004

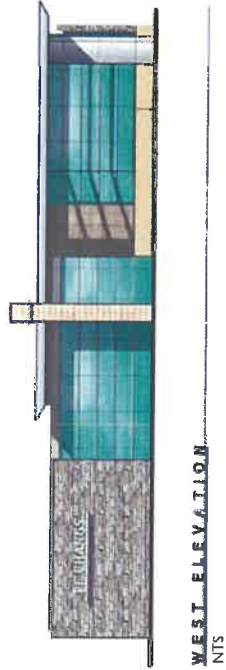
Only approved locations are shown. For allowable quantities, see page 11.

October 19, 2012

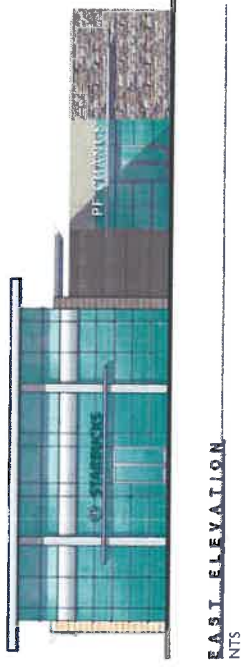
# SIGN TYPE 6 & 7 TENANT ID ELEVATIONS



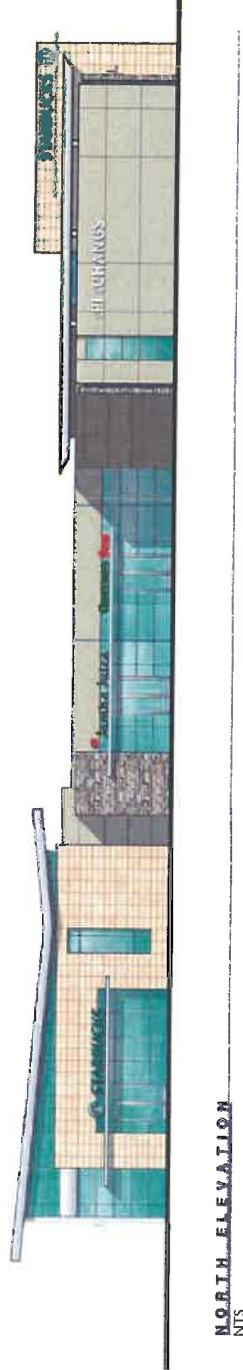
**SOUTH ELEVATION**  
NTS



**WEST ELEVATION**  
NTS



**EAST ELEVATION**  
NTS



**NORTH ELEVATION**  
NTS

RETAIL  
ELEVATIONS

**PAGE 10.1**

ONTARIO AIRPORT TOWERS

SIGN PROGRAM  
CASE # PSGP08-004

Elevations shown are for color reference only. Exhibits are only examples.

October 19, 2012

**Purpose:**

To identify retail business names at ground level. Retail tenants are defined as an occupant who is deemed by the individual building landlord, per their lease, to have the right to have their company name on the building at the eyebrow level.

**Maximum Number:**

One sign per tenant per store entry. An individual tenant may not have more than one sign per building elevation.

**Location:**

As shown per elevation details or site plan located on page 10.

**Orientation:**

Parallel to wall toward street, parking lot or pedestrian area.

**Sign Copy:**

One single-line-copy business name and logo per building only.  
Two line copy subject to owners approval.

**Max. Sign Area & Size:**

Letters: 24" high (not to exceed eaveline)  
Area: 28 square feet

**Sign Construction/Material:**

Individual letters and logos only. No cabinet signs or cloud signs. Fabricated from aluminum. See page 10A for more details. Lettering in front of vision glass to have finished backs.

**Illumination:**

Face lit illumination permitted. No exposed neon lighting allowed. Subject to ownership approval.

**Logo:**

Yes

**Letterstyle:**

California Grotesk or approved tenant logo typeface

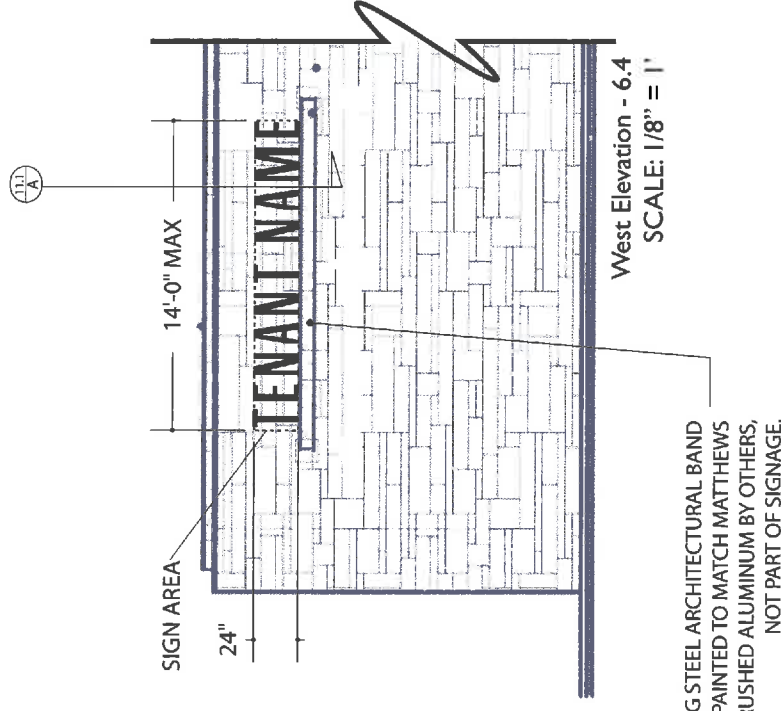
**Color:**

Tenant will only be allowed to use logo type color that is consistent with their nationally recognized brand. Colors must contrast with area directly behind signage. Color subject to approval of ownership & City. Tenants without a nationally recognized identity will be allowed black day/night acrylic or white acrylic sign faces, subject to contrast.

# SIGN TYPE 6

## RETAIL SHELF

### TENANT ID



SIGN TYPE 6  
ELEVATION / SPECIFICATIONS

# PAGE 11

ONTARIO AIRPORT TOWERS

SIGN PROGRAM  
CASE # PSGP08-004

• All future developments must conform to this sign program

October 19, 2012

# SIGN TYPE 6

## RETAIL SHELF

### TENANT ID

#### DETAIL

DESIGN NOTES:

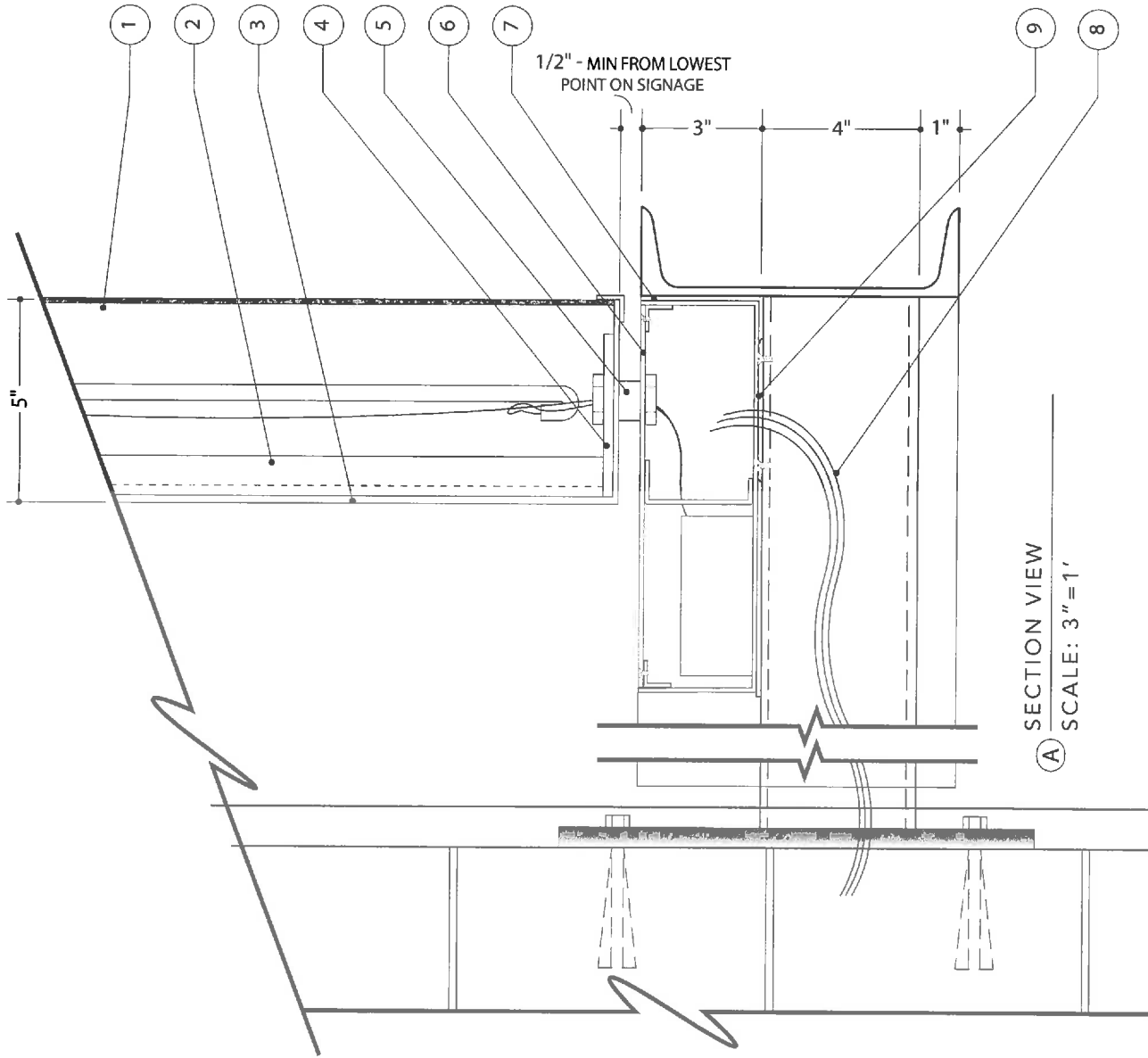
1. 3/16" ACRYLIC FACES & JEWELITE TRIMCAP.
2. 1" ALUM. L-ANGLE SUPPORTS FOR BACKS OF LETTERS
3. 1/8" ALUM. BACKS
4. 1/4" ALUM. PLATE
5. 1" DIA. ALUM. STANDOFFS
6. .090 ALUM. RACWAY WITH REMOVABLE LID.
7. BIUTHENE BETWEEN STEEL AND ALUMINIUM TO PREVENT ELECTROLYSIS
8. PRIMARY POWER WIRE TO DEDICATED CIRCUIT, 120 VOLT/15AMP PHOTOCELL ON/TIMER OFF BY G.C.
9. PROVIDE COVER PLATE FOR ACCESS TO PRIMARY POWER.

SIGN TYPE 6  
DETAILS

PAGE 11.1

ONTARIO AIRPORT TOWERS

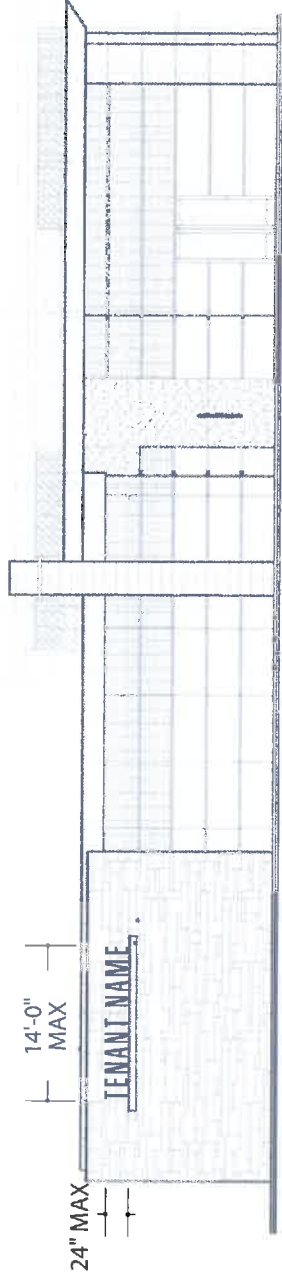
SIGN PROGRAM  
CASE # PSGP08-004



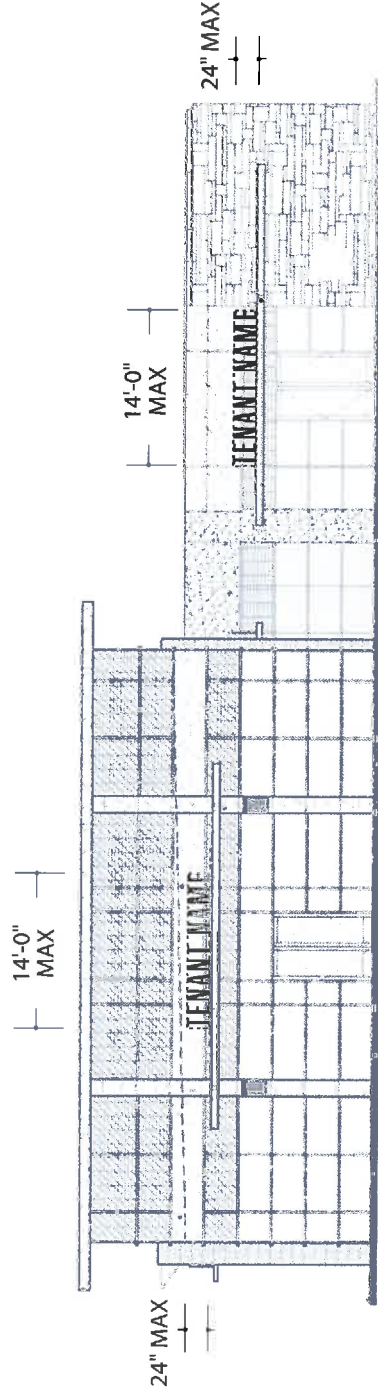
October 19, 2012

# SIGN TYPE 6

RETAIL SHELF  
TENANT ID  
ELEVATIONS



West Elevation - 6.4  
SCALE: 1/16" = 1'



East Elevation - 6.5, 6.9  
SCALE: 1/16" = 1'

SIGN TYPE 6  
ELEVATIONS

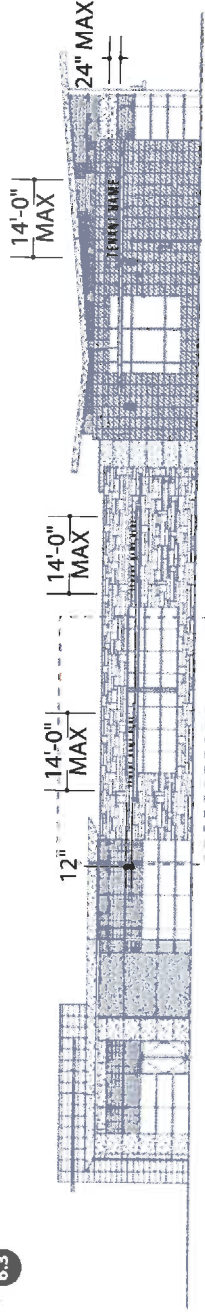
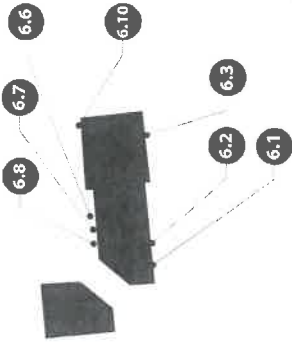
PAGE 11.2

ONTARIO AIRPORT TOWERS

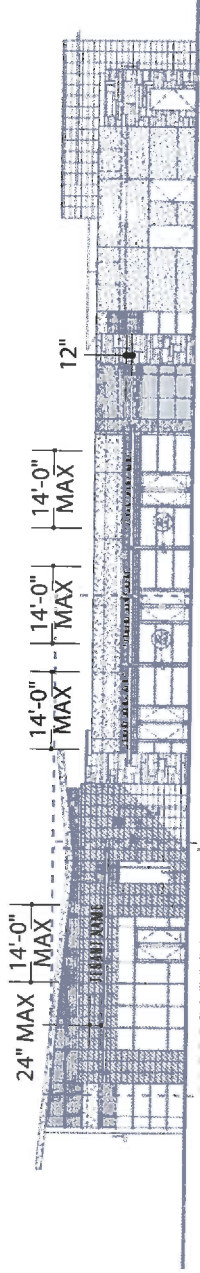
SIGN PROGRAM  
CASE # PSGP08-004

October 19, 2012

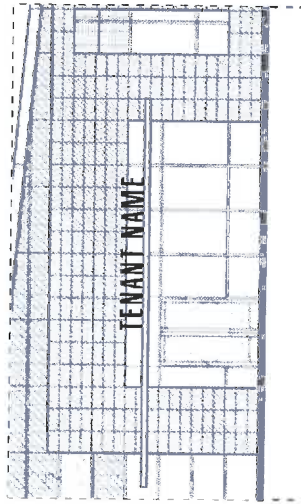
# SIGN TYPE 6 RETAIL SHELF TENANT ID ELEVATIONS



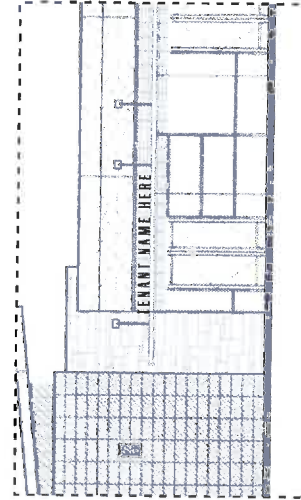
South Elevation - 6.1, 6.2, 6.3  
SCALE: 1/32" = 1'



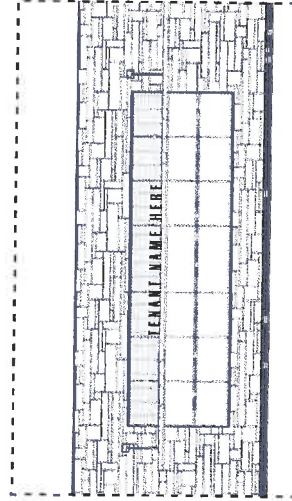
North Elevation - 6.6, 6.7, 6.8, 6.10  
SCALE: 1/32" = 1'



Typical Enlarged Detail  
SCALE: 1/16" = 1'



Typical Enlarged Detail  
SCALE: 1/16" = 1'



Typical Enlarged Detail  
SCALE: 1/16" = 1'

SIGN TYPE 6  
ELEVATIONS



**Purpose:**

To identify retail business names at ground level. Retail tenants are defined as an occupant who is deemed by the individual building landlord, per their lease, to have the right to have their company name on the building at the eyebrow level.

**Maximum Number:**

Two per building. An individual tenant may not have more than one sign per building elevation.

**Location:**

As shown per elevation details or site plan located on page 10.

**Orientation:**

Parallel to wall toward street, parking lot or pedestrian area.

**Sign Copy:**

One single-line-copy business name and logo per building only.  
Two line copy subject to city & owners approval.

**Max. Sign Area & Size:**

Letters: 24" high (not to exceed eaveline)  
Area: 28 square feet

**Sign Construction/Material:**

Individual letters and logos only. No cabinet signs or cloud signs. Fabricated from aluminum. See page 11A for more details. Lettering in front of vision glass to have finished backs.

**Illumination:**

Face lit illumination permitted. No exposed neon lighting allowed. Subject to ownership approval.

**Logo:**

Yes

**Letterstyle:**

California Grotesk or approved tenant logo typeface

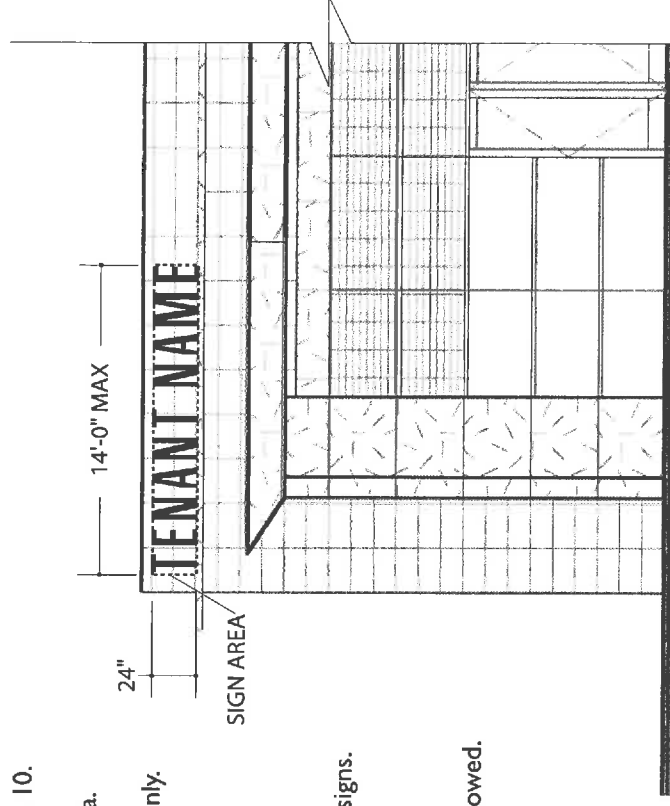
**Color:**

Tenant will only be allowed to use logo type color that is consistent with their nationally recognized brand. Colors must contrast with area directly behind signage. Color subject to approval of ownership & City. Tenants without a nationally recognized identity will be allowed black day/night acrylic or white acrylic sign faces, subject to contrast.

# SIGN TYPE 7

## RETAIL WALL

### TENANT ID



South Elevation  
SCALE: 1/8" = 1'

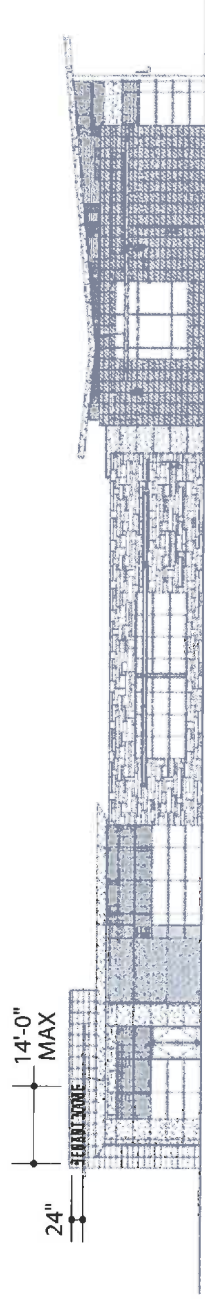
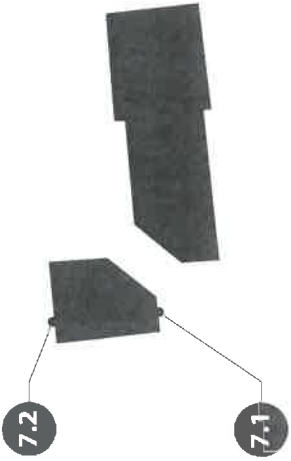
### SIGN TYPE 7

#### ELEVATION / SPECIFICATIONS

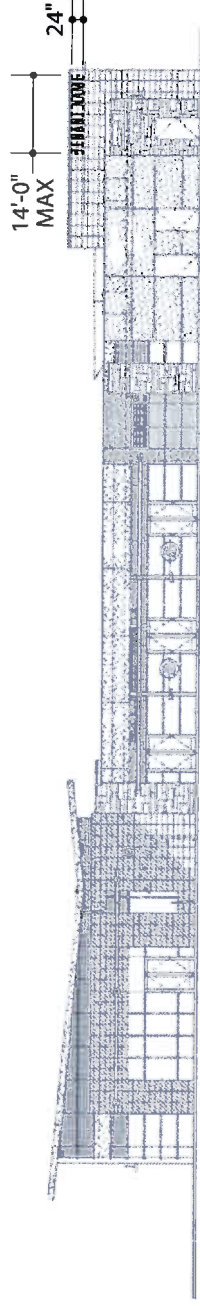
• All future developments must conform to this sign program

October 19, 2012

**SIGN TYPE 7**  
 RETAIL WALL  
 TENANT ID  
 ELEVATIONS



South Elevation - 7.1  
 SCALE: 1/32" = 1'



North Elevation - 7.2  
 SCALE: 1/32" = 1'

SIGN TYPE 7  
 ELEVATIONS

**PAGE 12.1**

ONTARIO AIRPORT TOWERS

SIGN PROGRAM  
 CASE # PSGP08-004

October 19, 2012

# LEGEND

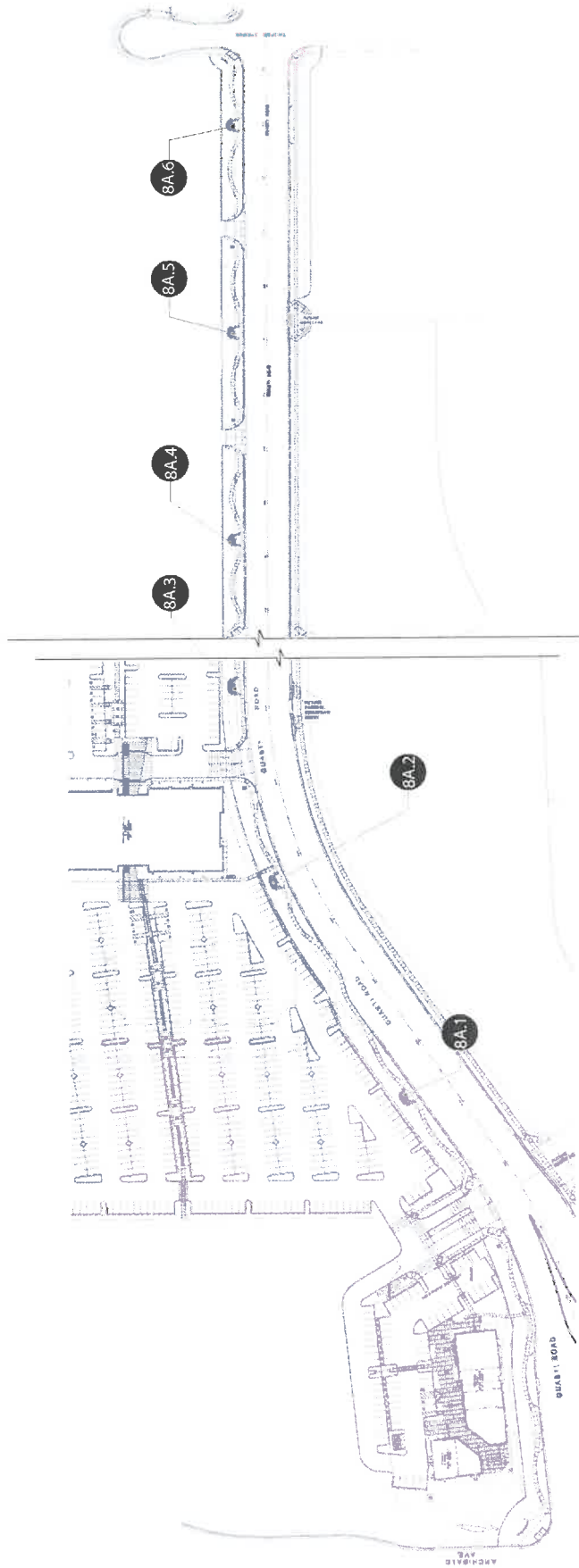
SIGN TYPE

8.1

ALTERNATE LOCATIONS

# SITE PLAN FOR SIGN TYPE 8

8A Art Node Plaque



SIGN TYPE 8  
SITE PLAN

PAGE 13

ONTARIO AIRPORT TOWERS

SIGN PROGRAM  
CASE # PSGP08-004

October 19, 2012

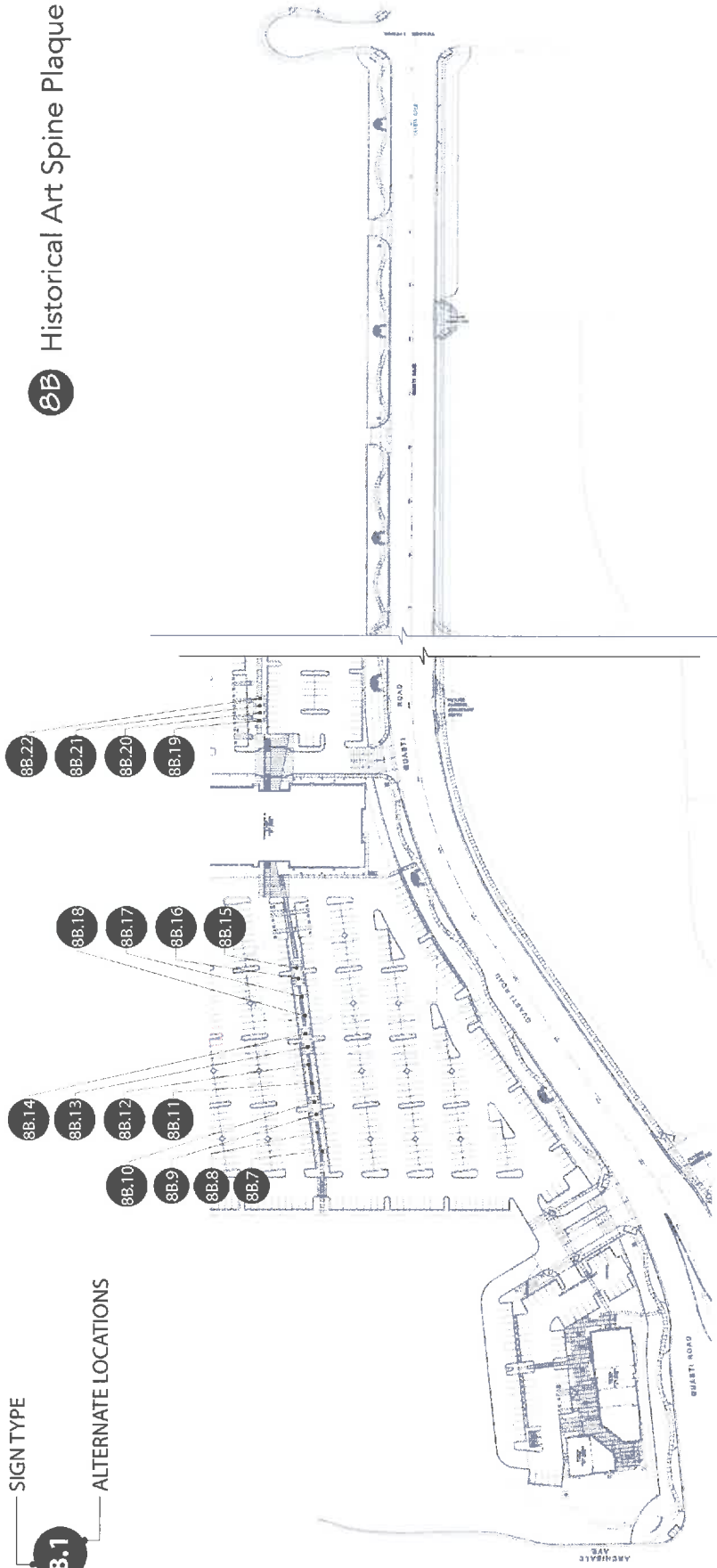
# LEGEND

— SIGN TYPE

**8.1**

— ALTERNATE LOCATIONS

**8B** Historical Art Spine Plaque



SIGN TYPE 8  
SITE PLAN

## PAGE 13.1

ONTARIO AIRPORT TOWERS

SIGN PROGRAM  
CASE # PSGP08-004

October 19, 2012

# SIGN TYPE 8A

## ART NODE PLAQUES

**Purpose:** To identify historical information related to immediate region.

**Maximum Number:** 6

**Location:** See page 13 for locations.

**Orientation:** Set onto existing stone covered concrete pilasters.

**Sign Copy:** "Ontario Airport Towers" logo, historical graphic and information.

**Max. Sign Area & Size:**  
**Size:** 30" Square  
**Area:** 3.19 square feet

**Sign Construction/Material:** See page 14.2 for construction details.

**Illumination:** No

**Logo:** Yes, see typical

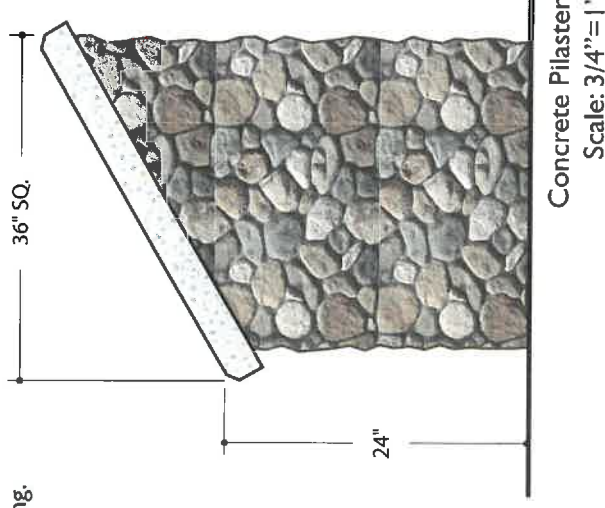
**Letterstyle:** California Grotesk

**Color:** Natural Bronze with brushing.



Plaque - Typical  
 Scale: 1" = 1'

30" SQ.



SIGNTYPE 8  
 ELEVATION / SPECIFICATIONS

PAGE 14

ONTARIO AIRPORT TOWERS

SIGN PROGRAM  
 CASE # PSGP08-004

• All future developments must conform to this sign program

October 19, 2012

# SIGN TYPE 8B

## HISTORICAL ART SPINE PLAQUES

**Purpose:** To identify historical information related to immediate region.

**Maximum Number:** 16

**Location:** See page 13.1 for locations.

**Orientation:** Set into concrete.

**Sign Copy:** "Ontario Airport Towers" logo, historical graphic and information.

**Max. Sign Area & Size:** Size: 30" Square  
Area: 3.19 square feet

**Sign Construction/Material:** See page 14.2 for construction details.

**Illumination:** No

**Logo:** Yes, see typical

**Letterstyle:** California Grotesk

**Color:** Natural Bronze with brushing.



Plaque - Typical  
Scale: 1"=1'

SIGN TYPE 8  
ELEVATION / SPECIFICATIONS

PAGE 14.1

ONTARIO AIRPORT TOWERS

SIGN PROGRAM  
CASE # PSGP08-004

• All future developments must conform to this sign program

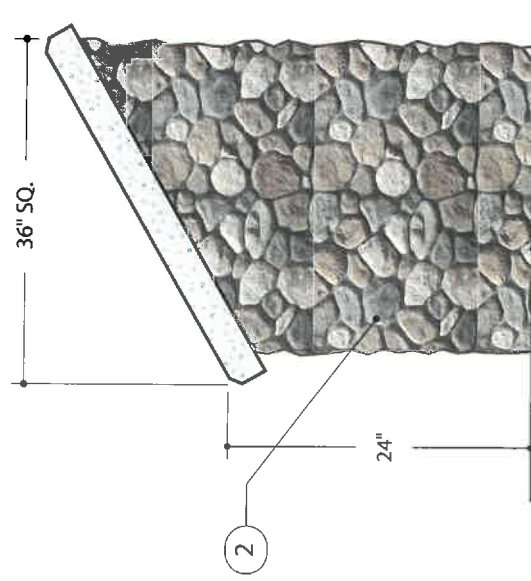
October 19, 2012

# SIGN TYPE 8A & 8B

## ART PLAQUES



FRONT VIEW  
SCALE: 1 1/2" = 1'



DESIGN NOTES:

1. 7/16" THICK CAST BRONZE PLAQUE W/ RAISED BRUSHED GRAPHICS AND LOGO.
2. PRE-CAST CONCRETE, STONE VENEER PEDESTAL.

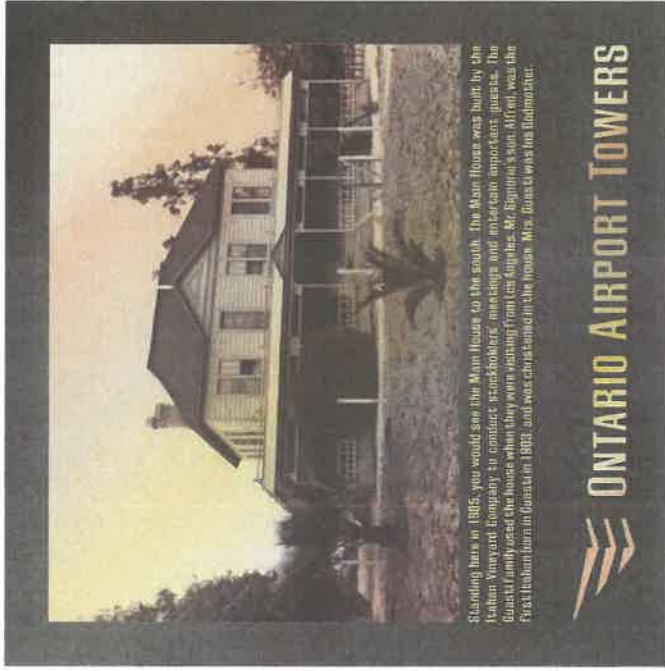
SIGN TYPE 8  
CONSTRUCTION DETAILS

PAGE 14.2

ONTARIO AIRPORT TOWERS

SIGN PROGRAM  
CASE # PSGP08-004

# SIGN TYPE 8 ART PLAQUES



ST8A.1

FRONT VIEW

SCALE: 1 1/2" = 1'



ST8A.2

FRONT VIEW

SCALE: 1 1/2" = 1'

SIGN TYPE 8  
DETAILS

PAGE 14.3

ONTARIO AIRPORT TOWERS

SIGN PROGRAM  
CASE # PSGP08-004

October 19, 2012



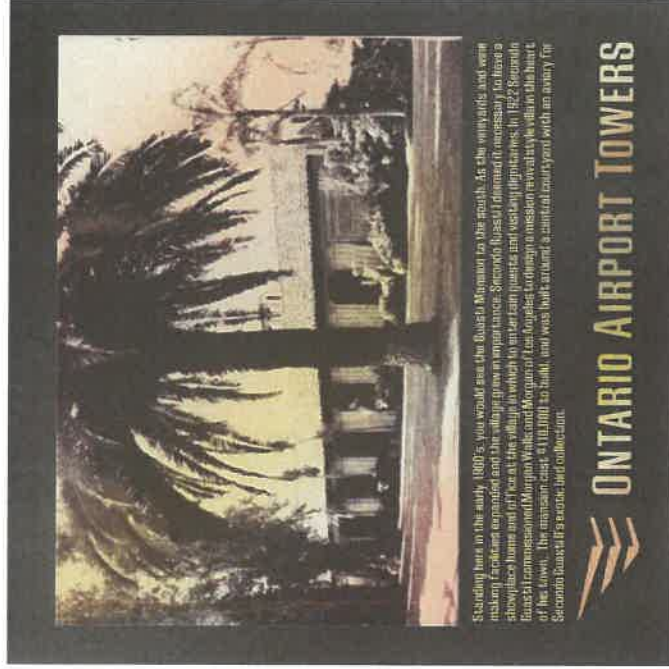
# SIGN TYPE 8 ART PLAQUES



STBA.3

FRONT VIEW

SCALE: 1 1/2" = 1'



STBA.4, STBA.10

FRONT VIEW

SCALE: 1 1/2" = 1'

SIGN TYPE 8  
DETAILS

PAGE 14.4

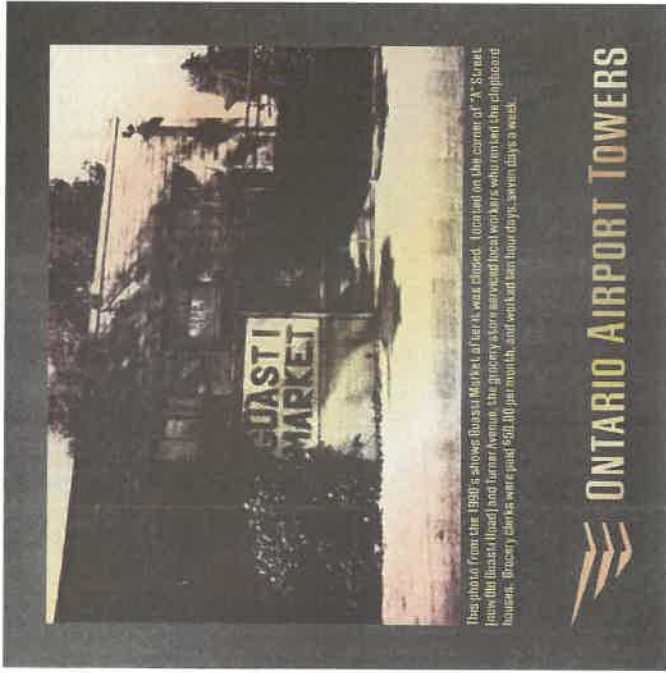
ONTARIO AIRPORT TOWERS

SIGN PROGRAM  
CASE # PSGP08-004

October 19, 2012

# SIGN TYPE 8

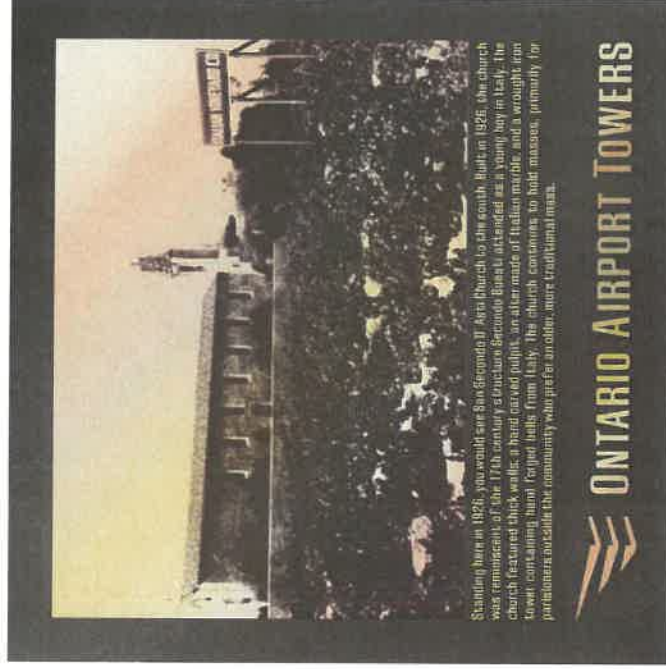
## ART PLAQUES



ST8A.5

FRONT VIEW

SCALE: 1 1/2" = 1'



ST8A.6

FRONT VIEW

SCALE: 1 1/2" = 1'

SIGN TYPE 8  
DETAILS

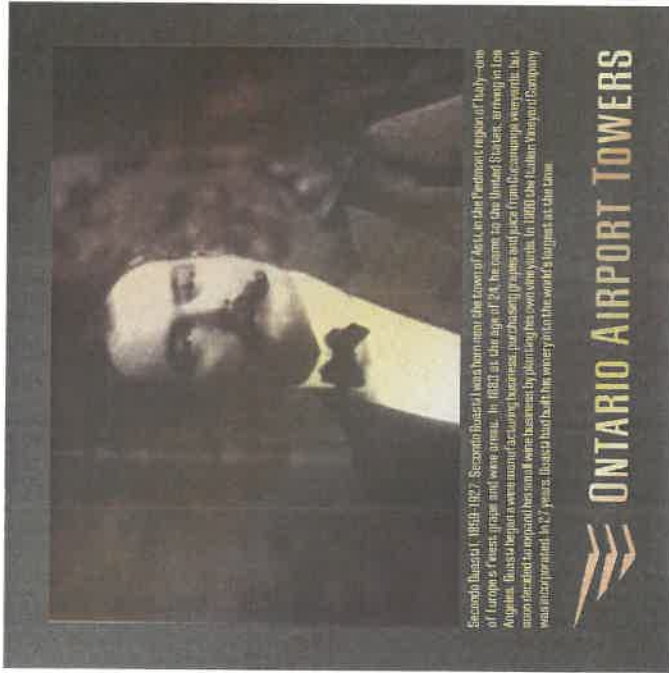
PAGE 14.5

ONTARIO AIRPORT TOWERS

SIGN PROGRAM  
CASE # PSGP08-004

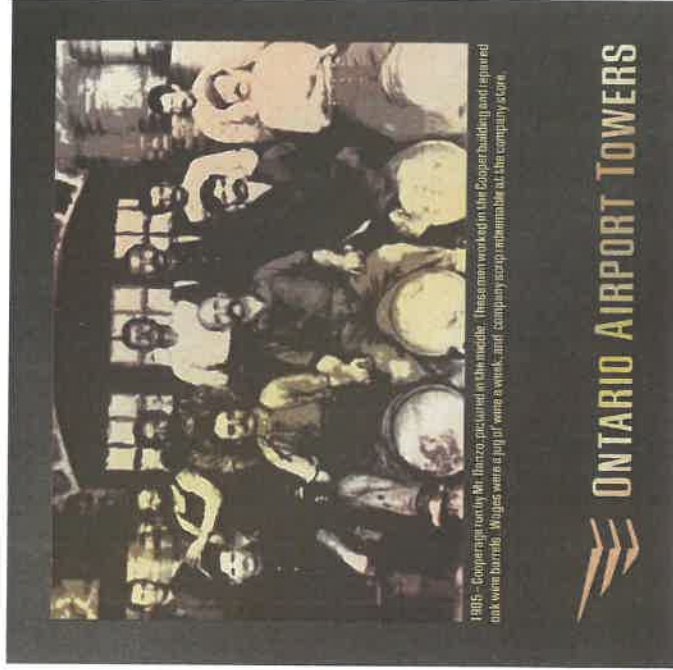
October 19, 2012

# SIGN TYPE 8 ART PLAQUES



FRONT VIEW

SCALE: 1 1/2"=1'



FRONT VIEW

SCALE: 1 1/2"=1'

SIGN TYPE 8  
DETAILS

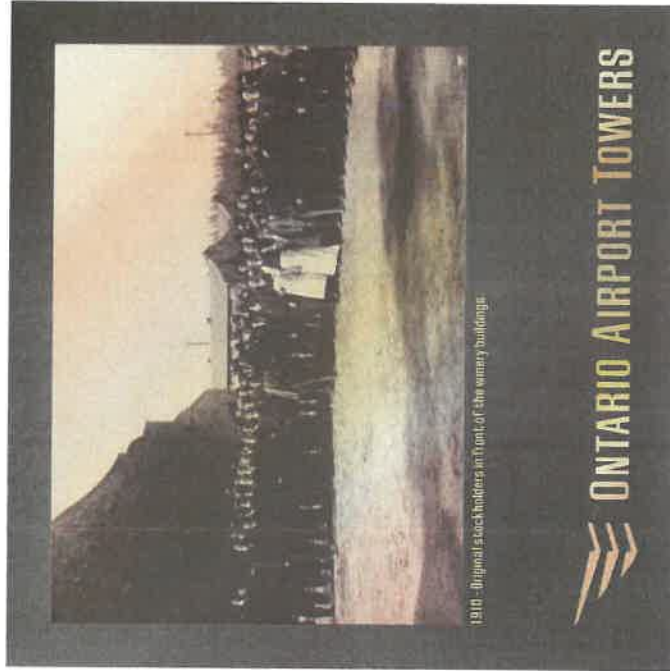
PAGE 14.6

ONTARIO AIRPORT TOWERS

SIGN PROGRAM  
CASE # PSGP08-004

October 19, 2012

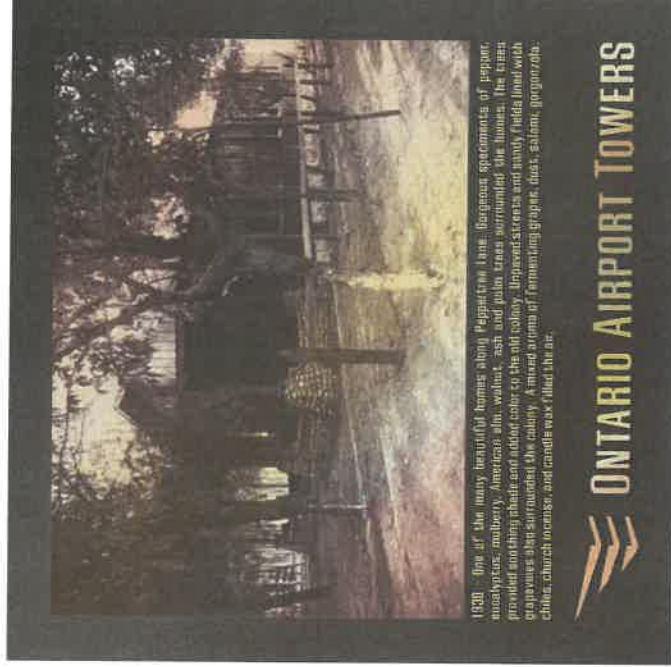
# SIGN TYPE 8 ART PLAQUES



ST08.9-DAT\_WORKERS(4)

FRONT VIEW

SCALE: 1 1/2" = 1'



ST08.10-DAT\_HOUSE(2)

FRONT VIEW

SCALE: 1 1/2" = 1'

SIGN TYPE 8  
DETAILS

PAGE 14.7

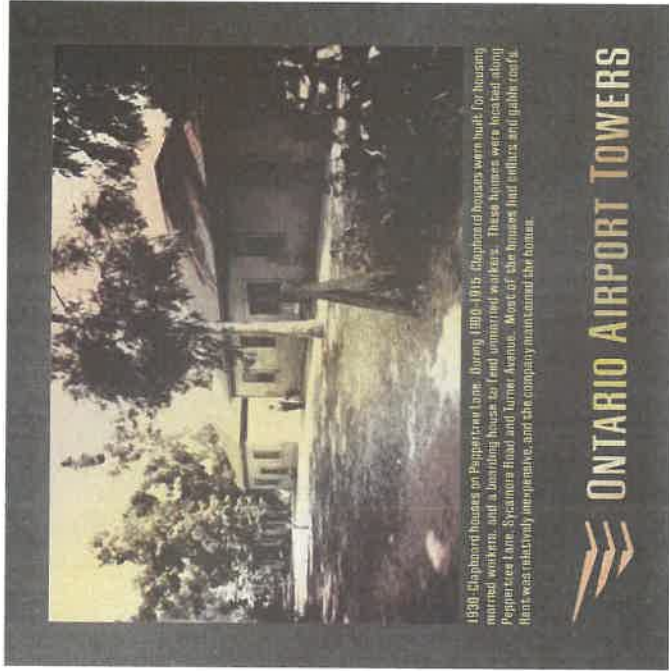
ONTARIO AIRPORT TOWERS

SIGN PROGRAM  
CASE # PSGP08-004

October 19, 2012

# SIGN TYPE 8

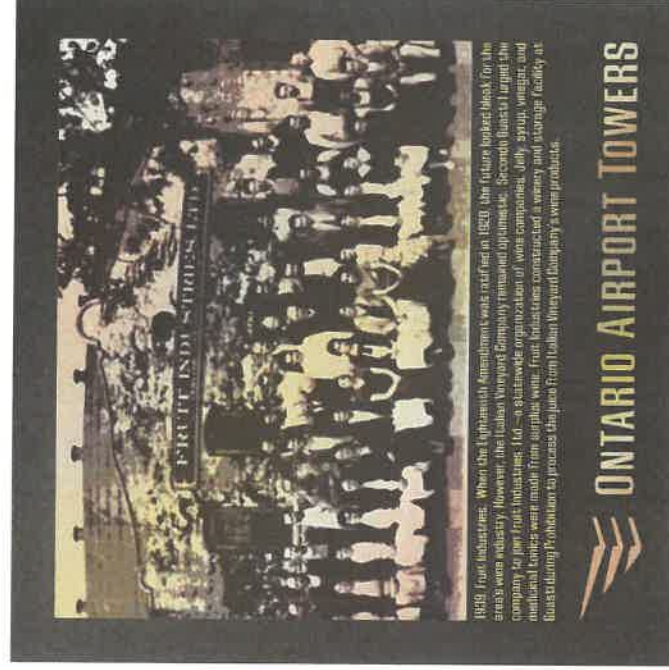
## ART PLAQUES



ST88.11

FRONT VIEW

SCALE: 1 1/2" = 1'



ST88.12

FRONT VIEW

SCALE: 1 1/2" = 1'

SIGN TYPE 8  
DETAILS

PAGE 14.8

ONTARIO AIRPORT TOWERS

SIGN PROGRAM  
CASE # PSGP08-004

October 19, 2012

# SIGNTYPE 8 ART PLAQUES



FRONT VIEW  
SCALE: 1 1/2" = 1'



FRONT VIEW  
SCALE: 1 1/2" = 1'

SIGNTYPE 8  
DETAILS

PAGE 14.9

ONTARIO AIRPORT TOWERS

SIGN PROGRAM  
CASE # PSGP08-004

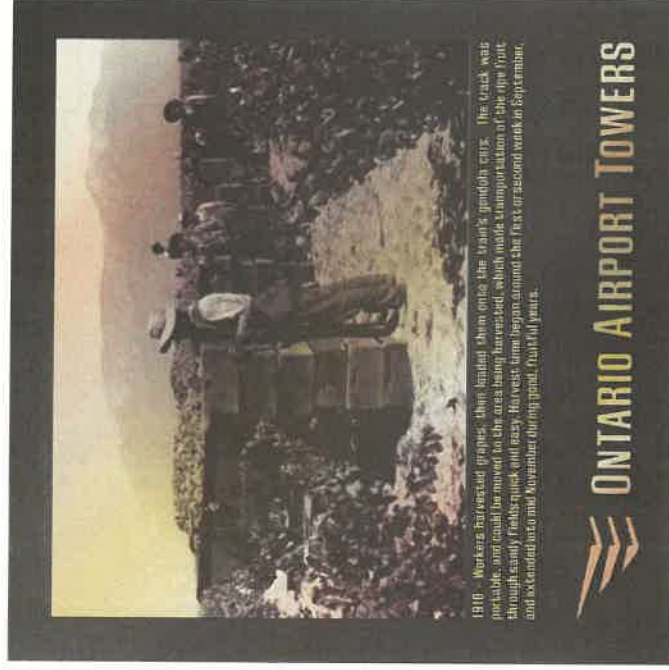
October 19, 2012

# SIGN TYPE 8

## ART PLAQUES



FRONT VIEW  
SCALE: 1 1/2" = 1'



FRONT VIEW  
SCALE: 1 1/2" = 1'

SIGN TYPE 8  
DETAILS

PAGE 14.10

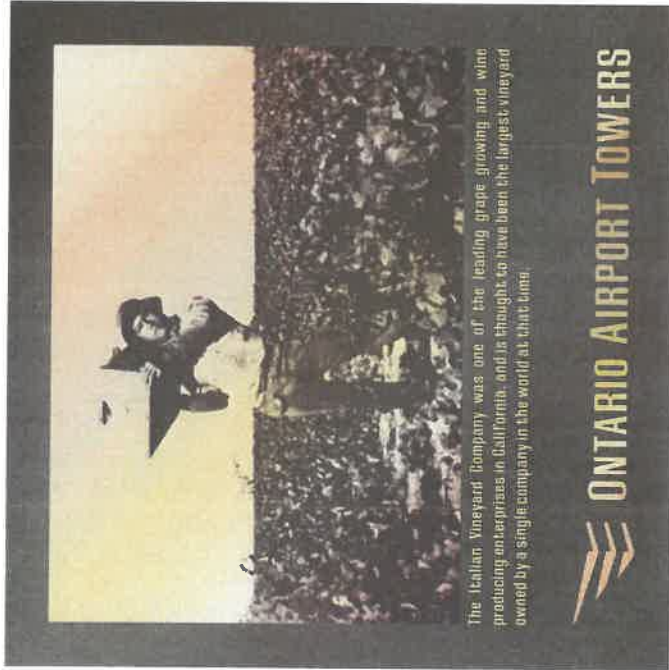
ONTARIO AIRPORT TOWERS

SIGN PROGRAM  
CASE # PSGP08-004

October 19, 2012

# SIGN TYPE 8

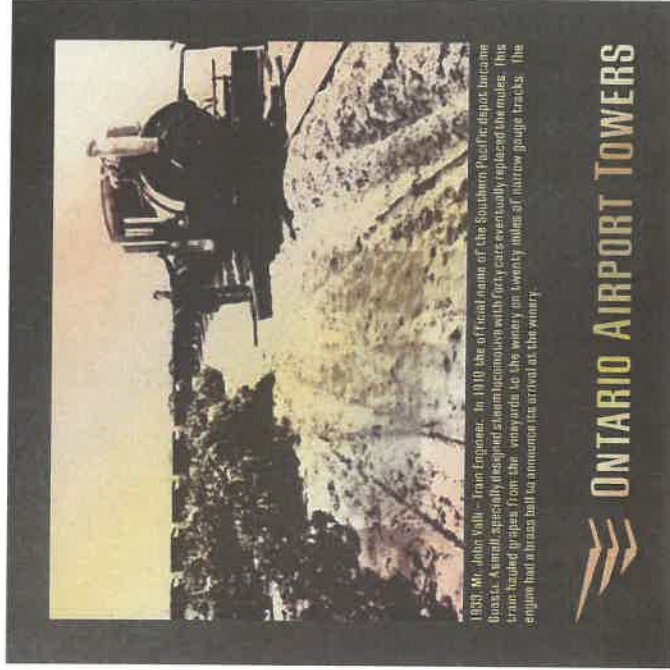
## ART PLAQUES



ST188.17

FRONT VIEW

SCALE: 1 1/2" = 1'



ST188.18

FRONT VIEW

SCALE: 1 1/2" = 1'

SIGN TYPE 8  
DETAILS

PAGE 14.11

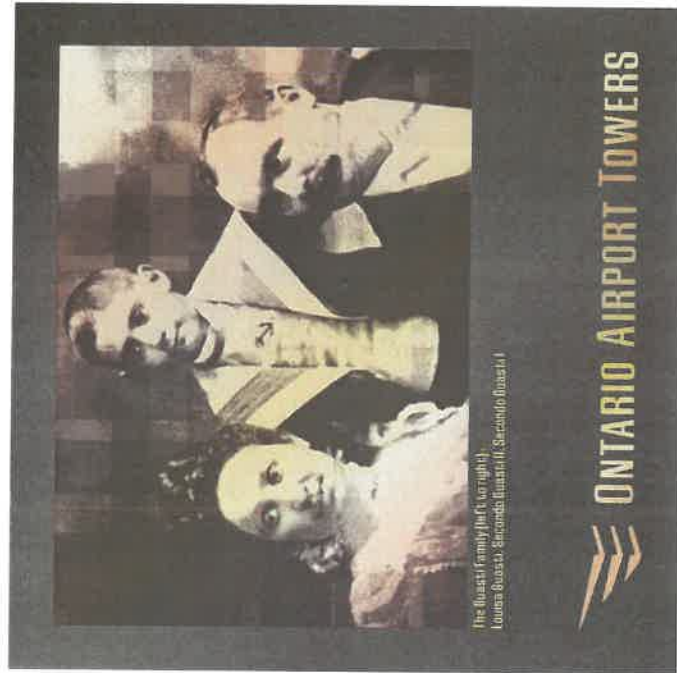
ONTARIO AIRPORT TOWERS

SIGN PROGRAM  
CASE # PSGP08-004

October 19, 2012

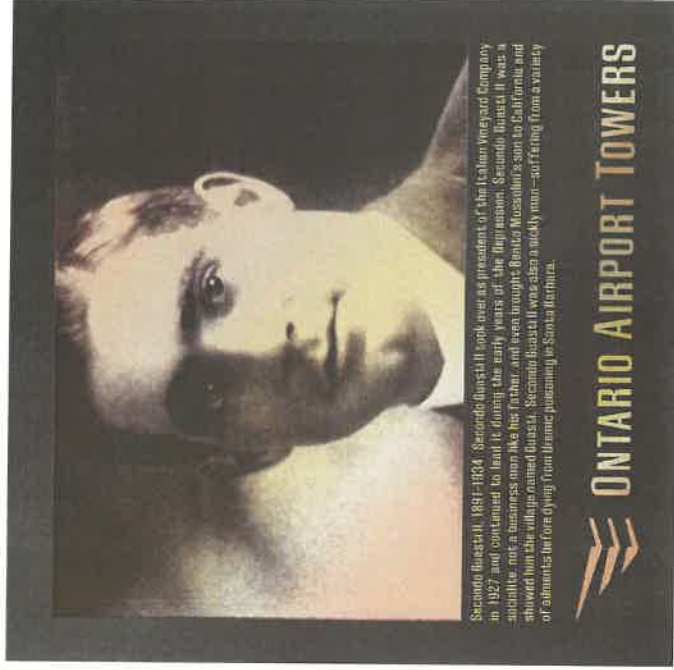


# SIGN TYPE 8 ART PLAQUES



FRONT VIEW

SCALE: 1 1/2" = 1'



FRONT VIEW

SCALE: 1 1/2" = 1'

SIGN TYPE 8  
DETAILS

PAGE 14.12

ONTARIO AIRPORT TOWERS

SIGN PROGRAM  
CASE # PSGP08-004

October 19, 2012