

<b>PLANNING DEPARTMENT APPROVED</b>	
<b>SUBJECT TO CONDITIONS</b>	
File No. <u>PSGP10-005</u>	
Approved By: <u>[Signature]</u>	Date: <u>3/11/2010</u>



# Ontario - Vineyard Medical Center

Site Signage - Phase 2

Proposed Revised Exterior Sign Program  
Design Drawings

Includes Phase 1 Exterior and Parking Structure Exterior

03.01.2010

















PROJECT LOGO



PROJECT TYPEFACES

**FUTURA HEAVY**  
**ABCDEFGHIJKLMNOPQRSTUVWXYZ**  
**abcdefghijklmnopqrstuvwxyz**  
**0123456789**

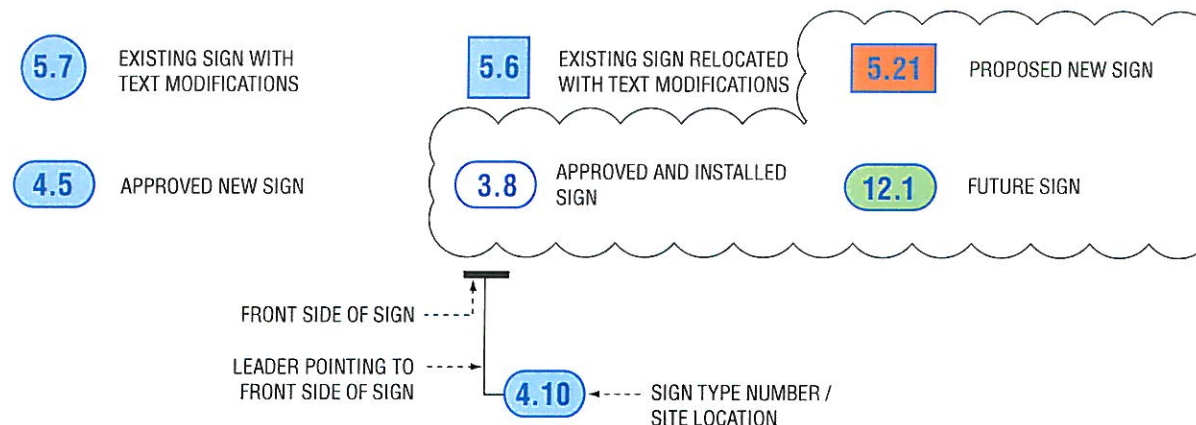
PROJECT COLORS

	BLUE 1 - PAINT TO MATCH PANTONE PMS 308		BLUE 28 - PAINT TO MATCH MATTHEWS MP67325 R101498
			BLUE 32 - TRANSLUCENT BACKGROUND TO MATCH MATTHEWS MP67325 R101498
	DARK GREY 5 - PAINT TO MATCH PANTONE PMS 425		GREEN 30 - PAINT TO MATCH MATTHEWS MP67327 R101498
			GREEN 35 - TRANSLUCENT BACKGROUND TO MATCH MATHEWS MP67327 R101498
	BLACK 6 - PAINT TO MATCH MATTHEWS PAINT 923		ORANGE 31 - PAINT TO MATCH MATTHEWS MP667326 R101700
	RED 9 - MATCH MATTHEWS 5A-1A RED 11 - SURFACE APPLIED (TRANSLUCENT) VINYL - MATCH 3M 230-73		RED 29 - PAINT TO MATCH MATTHEWS MP67328 R101498
			RED 33 - TRANSLUCENT BACKGROUND TO MATCH MATTHEWS MP67328 R101498
	MEDIUM GREY 4 - PAINT TO MATCH PANTONE - PMS 424		WHITE 14 - MILK WHITE ACRYLIC LENS WHITE 16 - MATCH 3M 220-20 MATTE WHITE WHITE 36 - TRANSLUCENT BACKGROUND TO MATCH BENJAMIN MOORE 1-20

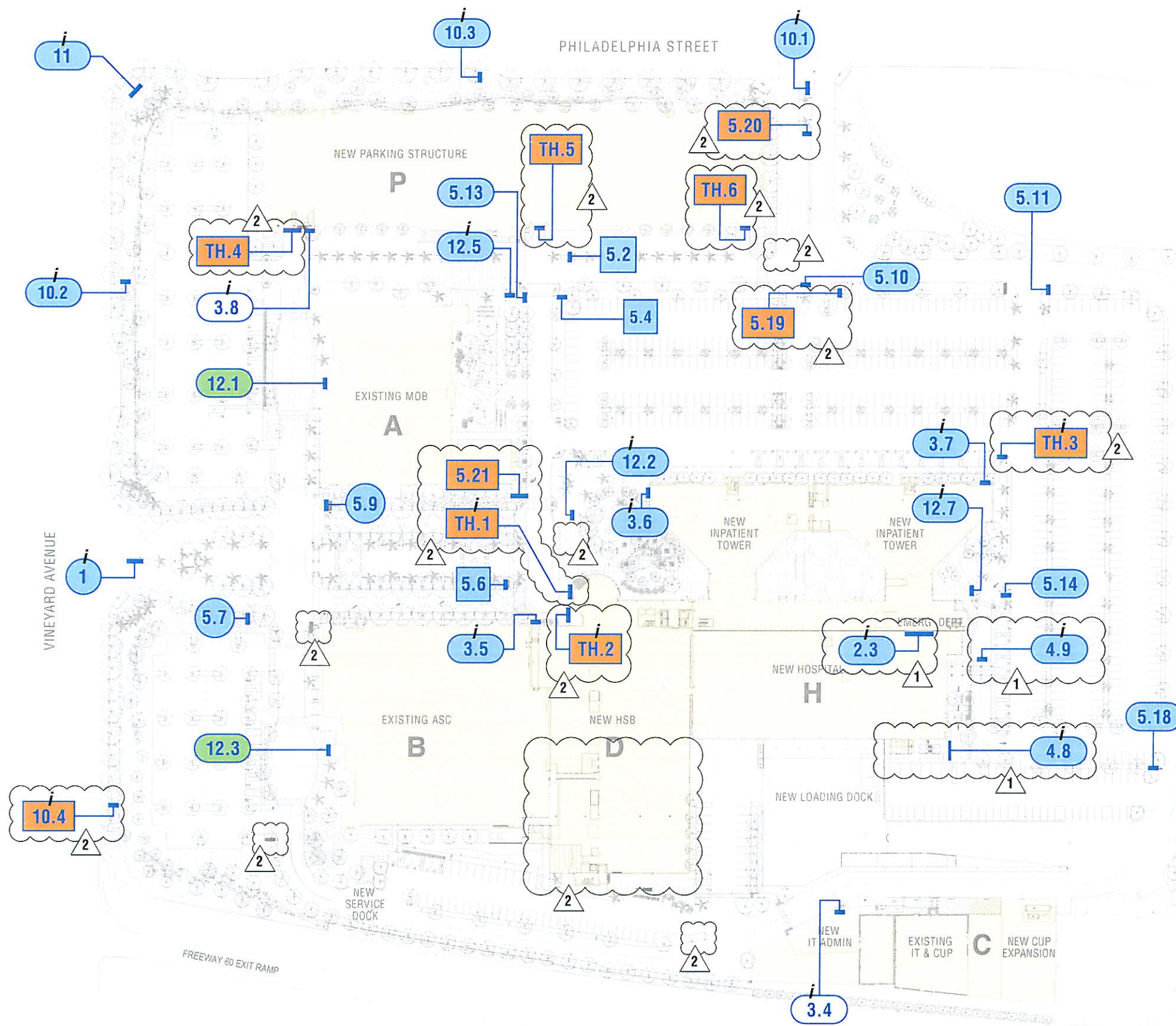
SHEET INDEX

M-1.0	GRAPHIC STANDARDS & SHEET INDEX	G-5.2	CAMPUS DIRECTIONAL SIGN DETAIL
G-REF0	CAMPUS SIGN LOCATION PLAN	G-5.3	CAMPUS DIRECTIONAL SIGN DETAIL
G-1.0	MONUMENT SIGN VINEYARD AVENUE ENTRANCE	G-10.0	MONUMENT SIGN PHILADELPHIA STREET ENTRANCE
G-2.2	KAISER PERMANENTE IDENTIFICATION SIGN HOSPITAL BUILDING - SOUTH ELEVATION	G-10.1	CAMPUS DIRECTIONAL SIGN
G-3.0	BUILDING LETTER IDENTIFICATION SIGN "P" PARKING STRUCTURE	G-11.0	MONUMENT SIGN VINEYARD AVENUE & PHILADELPHIA STREET
G-3.1	BUILDING LETTER IDENTIFICATION SIGN "C" CENTRAL UTILITY PLANT	G-12.0	CAMPUS INFORMATION KIOSK
G-3.5	BUILDING LETTER IDENTIFICATION SIGN "D" HOSPITAL SUPPORT BUILDING	G-TH.1	SIGN TYPE TH.1 HOSPITAL ENTRANCE MARKER
G-3.6	BUILDING LETTER IDENTIFICATION SIGN "H" HOSPITAL	G-TH.2	SIGN TYPE TH.2 MEDICAL OFFICE D ENTRANCE MARKER
G-4.2	AMBULANCE ENTRANCE IDENTIFICATION SIGN HOSPITAL - EAST ELEVATION	G-TH.3	SIGN TYPE TH.3 EMERGENCY ENTRANCE MARKER
G-4.3	EMERGENCY ENTRANCE IDENTIFICATION SIGN HOSPITAL - NORTH ELEVATION	G-TH.4	SIGN TYPE TH.4, TH.5, TH.6 PARKING GARAGE ENTRANCE/EXIT PORTALS
G-5.0	CAMPUS DIRECTIONAL SIGN DETAIL		
G-5.1	CAMPUS DIRECTIONAL SIGN DETAIL		

PROJECT AND LOCATION PLAN ITEM DESCRIPTION



KAISER ONTARIO-VINEYARD MEDICAL CENTER  
 CAMPUS SITE IDENTIFICATION  
 EXTERIOR - GRAPHIC STANDARDS  
 2006.046 | 03.01.10



**LEGEND**

EXISTING SIGN WITH COPY MODIFICATIONS	APPROVED AND INSTALLED SIGN
EXISTING SIGN RELOCATED WITH COPY MODIFICATIONS	PROPOSED NEW vsIGN
APPROVED NEW SIGN	FUTURE SIGN
<i>i</i> ILLUMINATED SIGN	

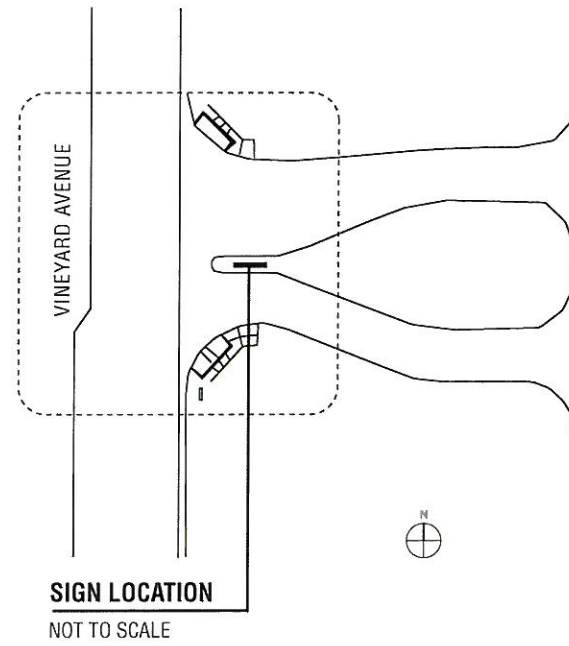
	<b>SIGN TYPE: 1</b> PRIMARY SITE IDENTIFICATION SIGN EXISTING EXTERNALLY ILLUMINATED MONUMENT SIGN WITH REVISED "EMERGENCY" LETTERING QUANTITY: 1 SEE SIGN 1
	<b>SIGN TYPE: 2</b> BUILDING IDENTIFICATION INTERNALLY ILLUMINATED CHANNEL LETTERS MOUNTED TO EQUIPMENT SCREEN QUANTITY: 1 SEE SIGN 2.3
	<b>SIGN TYPE: 3</b> BUILDING ADDRESS LETTER BACK LT ILLUMINATED CHANNEL LETTER MOUNTED TO BUILDING QUANTITY: 5 SEE SIGNS 3.4, 3.5, 3.6, 3.7, 3.8
	<b>SIGN TYPE: 4</b> ENTRANCE IDENTIFICATION SIGN INTERNALLY ILLUMINATED CHANNEL LETTERS QUANTITY: 2 SEE SIGNS 4.8, 4.9
	<b>SIGN TYPE: 5</b> CHANGEABLE DIRECTIONAL SIGN EXISTING AND NEW NON-ILLUMINATED SIGN CABINET MOUNTED ON TOP OF ARCHITECTURAL PEDESTAL QUANTITY: 14 SEE SIGNS 5.2, 5.4, 5.6, 5.7, 5.9, 5.10, 5.11, 5.13, 5.14, 5.18, 5.19, 5.20, 5.21
	<b>SIGN TYPE: 10</b> SITE IDENTIFICATION AND DIRECTIONAL SIGN EMERGENCY IDENTIFICATION/VEHICULAR DIRECTIONAL EXISTING AND NEW INTERNALLY ILLUMINATED MONOLITH SIGN MOUNTED ON TOP OF ARCHITECTURAL PEDESTAL QUANTITY: 4 SEE SIGNS 10.1, 10.2, 10.3, 10.4
	<b>SIGN TYPE: 11</b> PRIMARY SITE IDENTIFICATION/VEHICULAR DIRECTIONAL INTERNALLY ILLUMINATED MONUMENT SIGN MOUNTED ON TOP OF ARCHITECTURAL PEDESTAL QUANTITY: 1 SEE SIGN 11
	<b>SIGN TYPE: 12</b> ORIENTATION DIRECTORY FREE-STANDING ILLUMINATED AND NON-ILLUMINATED CAMPUS DIRECTORY QUANTITY: 7 SEE SIGNS 12.1, 12.3 (non-illuminated), 12.2, 12.5, 12.7 (illuminated)
	<b>SIGN TYPE: TH</b> IDENTIFICATION MARKER FREE-STANDING ILLUMINATED QUANTITY: 3 SEE SIGNS TH.1, TH.2, TH.3 PARKING GARAGE ENTRANCE/EXIT PORTALS QUANTITY: 3 SEE SIGNS TH.4, TH.5, TH.6

**REVISIONS**

- SIGN PROGRAM REVISIONS HAVE BEEN SUBMITTED AND ARE UNDER REVIEW BY CITY
- PROPOSED NEW SIGN REVISIONS

**Site Identification Sign/Monument**

- Description**  
Concrete tile monument structure with dimensional copy.
- Scale**  
As noted
- Illumination**  
External
- Copy**  
Flat cut dimensional aluminum letters, painted
- Mounting**  
Letters pin mounted
- Illumination**  
External, by others
- Color Specifications (Copy Only)**  
Face - Dark Grey 5  
Returns - Dark Grey 5

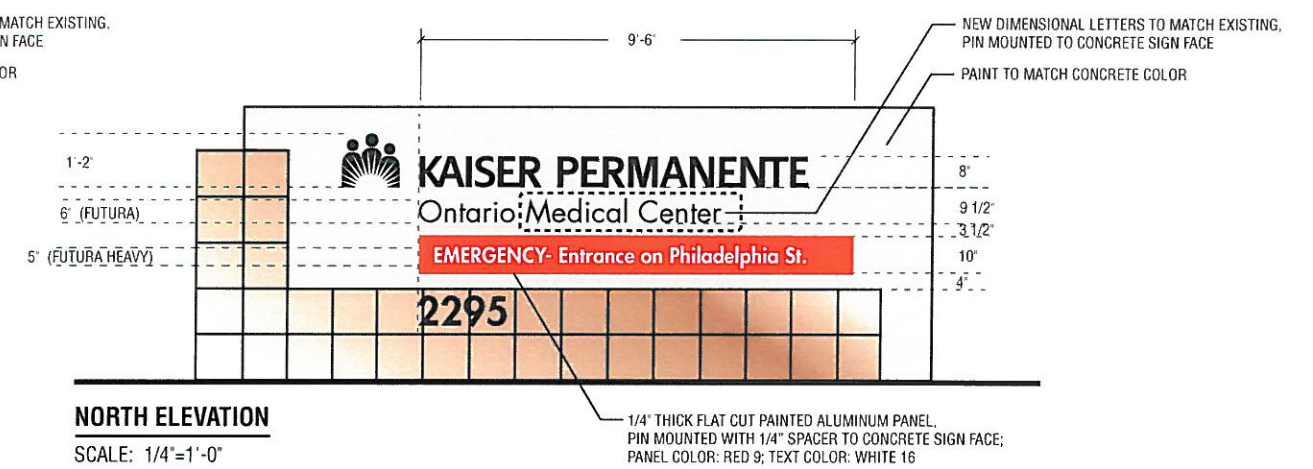


**EXISTING SIGN NORTH ELEVATION**  
NOT TO SCALE

EXISTING TEXT TO BE REPLACED



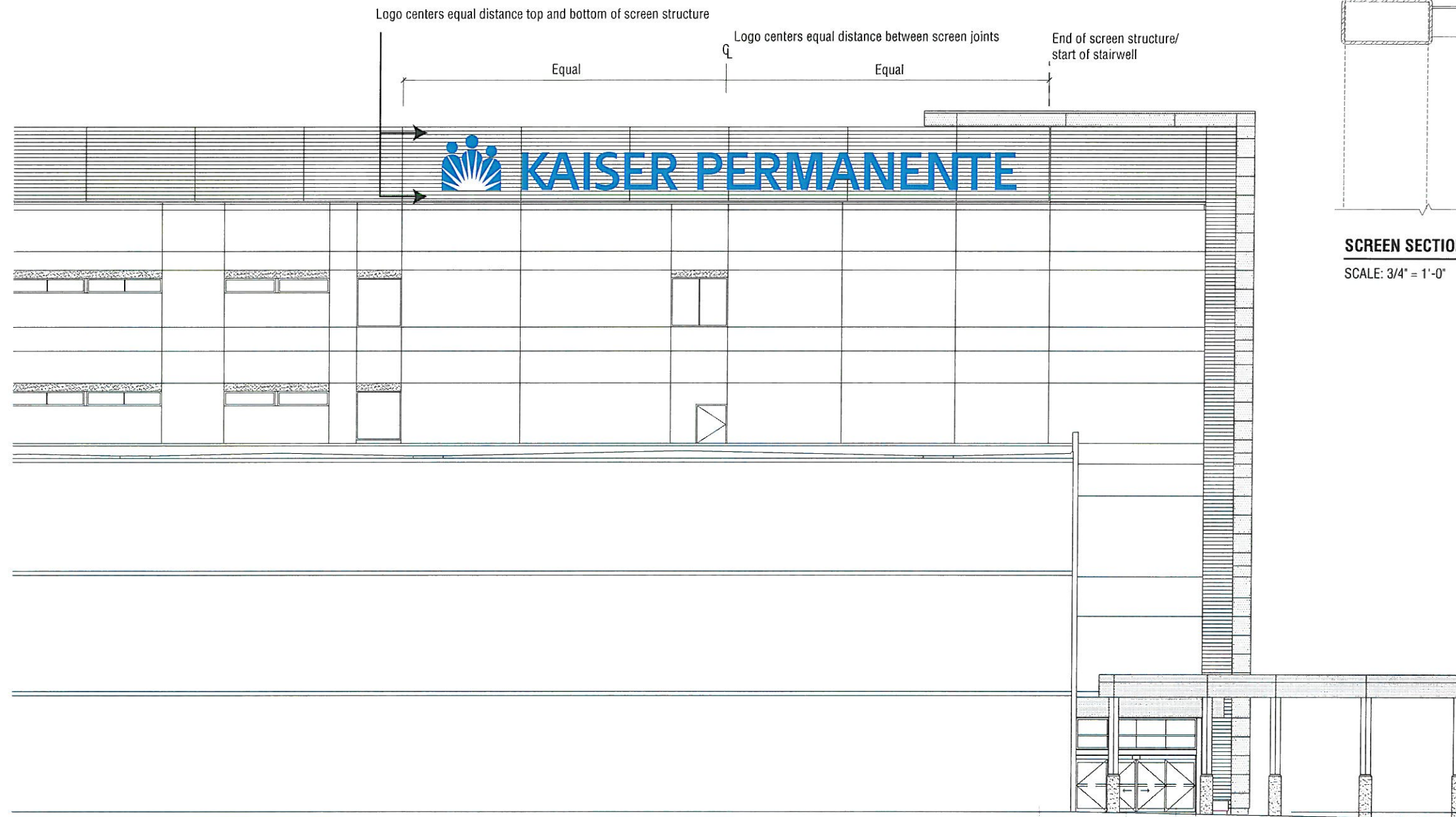
**1 SOUTH ELEVATION**  
SCALE: 1/4"=1'-0"



**NORTH ELEVATION**  
SCALE: 1/4"=1'-0"



**2.3** DETAIL  
SCALE: 1/16" = 1'-0"



**Site Identification Sign /  
Illuminated Blue Face Letter  
No Raceway**

**AGS Sign Type**  
02.2i/76-9

**Description**  
Internally illuminated channel letter mounted  
to screen to identify facility building.

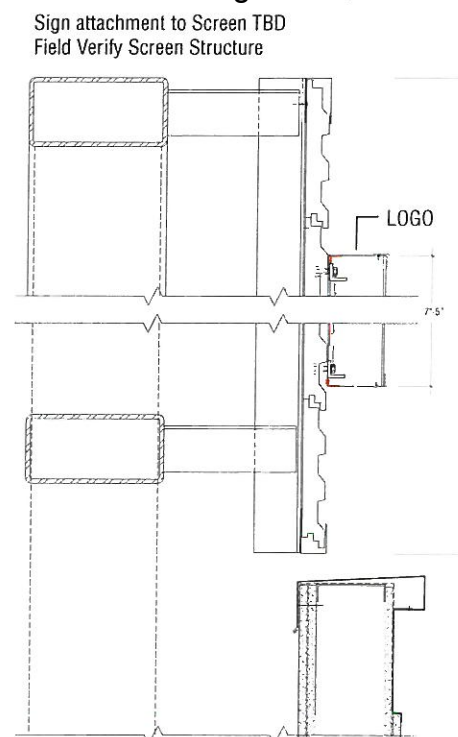
**Scale**  
As noted

**Illumination**  
Internal.  
Owner to provide electrical feed to sign  
location. All illuminated signs may be  
powered by either 120 or 277 volt  
electrical power feeds. The default for all  
illuminated signs is 120 volt. Final  
electrical connections by electrical  
contractor.

**Structure**  
Fabricated dimensional letters with  
aluminum returns and panels. LED  
illumination.

**Mounting**  
Suitable mechanical fasteners.

**Color Specifications**  
Face - PMS 308C  
Perforated vinyl  
(Blue at Day / White at Night)  
Trim Cap - Medium Gray (tbd)  
Returns - Medium Grey (tbd)



**SCREEN SECTION DETAIL**  
SCALE: 3/4" = 1'-0"

**2.3** SOUTH ELEVATION  
SCALE: 1/16" = 1'-0"



KAISER ONTARIO-VINEYARD MEDICAL CENTER  
HOSPITAL BRANDING SIGN  
EXTERIOR - SIGN TYPE 2  
2006.046 | 03.01.10

**G-2.2**

**Site Identification Sign /  
Backlit Halo Illuminated  
Blue Face Letter & Number**

**AGS Sign Type**  
2.3ICUS

**Description**  
Internally illuminated backlit aluminum channel letter mounted to wall, glass electrode receptacle and remote transformer to identify facility building

**Scale**  
As noted

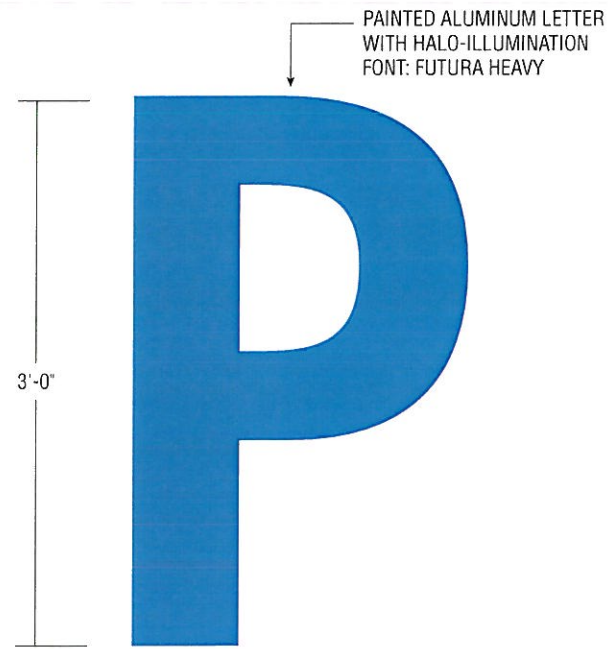
**Illumination**  
Internal.  
Owner to provide electrical feed to sign location. All illuminated signs may be powered by either 120 or 277 volt electrical power feeds. The default for all illuminated signs is 120 volt. Final electrical connections by electrical contractor.

**Structure**  
Fabricated dimensional letters with aluminum returns and panels. Internal argon tubing provides illumination.

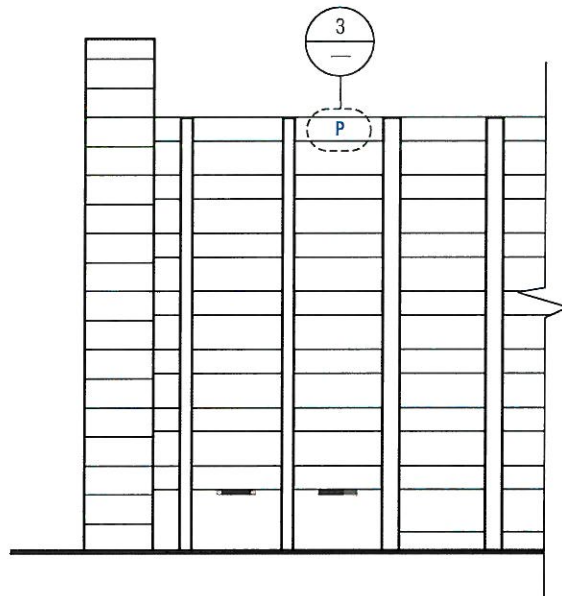
**Mounting**  
Suitable mechanical fasteners

**Color Specifications**  
Face - BLUE 1  
Returns - BLUE 1

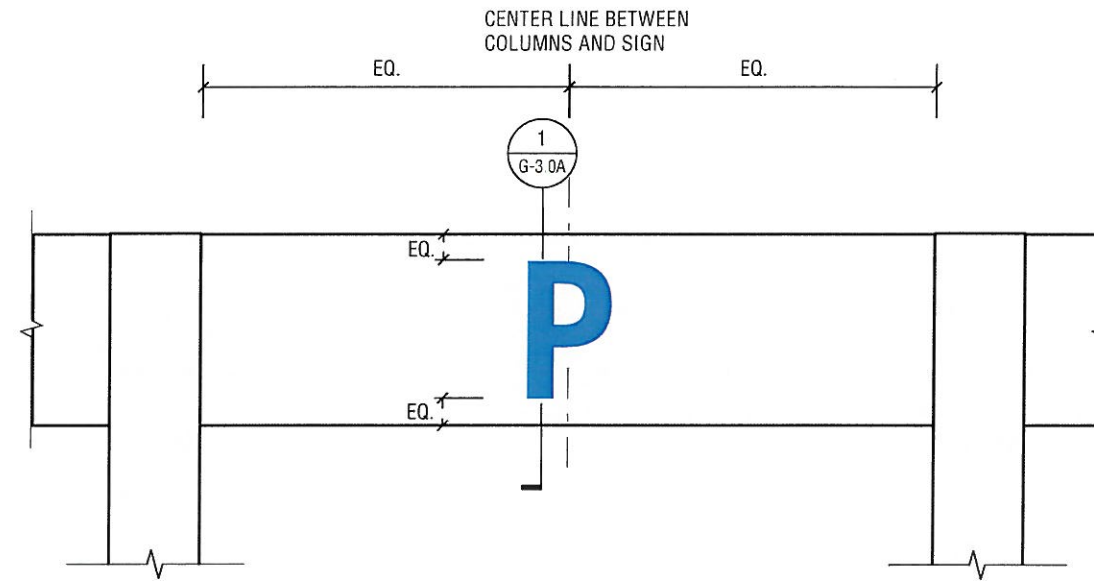
**Sign Weight**  
P - 28.4 lbs.  
1 - 28.4 lbs.



3 **BUILDING LETTER**  
SCALE: 1"=1'-0"



1 **SOUTH ELEVATION**  
SCALE: 1/32" = 1'-0"



2 **ELEVATION REFERENCE** **3.8**  
SCALE: 1/4"=1'-0"



REFERENCE: EXISTING SIGN



EXISTING SIGN DETAIL

**Site Identification Sign /  
Backlit Halo Illuminated  
Blue Face Letter**

**AGS Sign Type**  
2.3ICUS

**Description**  
Internally illuminated backlit aluminum channel letter mounted to wall, glass electrode receptacle and remote transformer to identify facility building.

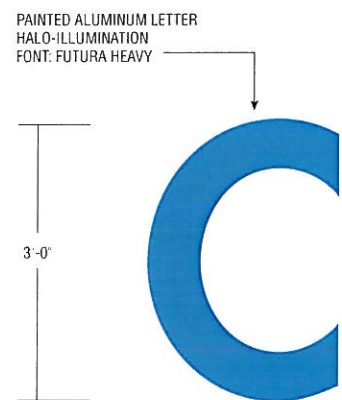
**Scale**  
As noted

**Illumination**  
Internal.  
Owner to provide electrical feed to sign location. All illuminated signs may be powered by either 120 or 277 volt electrical power feeds. The default for all illuminated signs is 120 volt. Final electrical connections by electrical contractor.

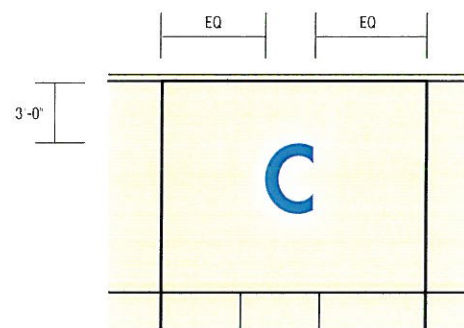
**Structure**  
Fabricated dimensional letters with aluminum returns and panels. Internal argon tubing provides illumination.

**Mounting**  
Suitable mechanical fasteners.

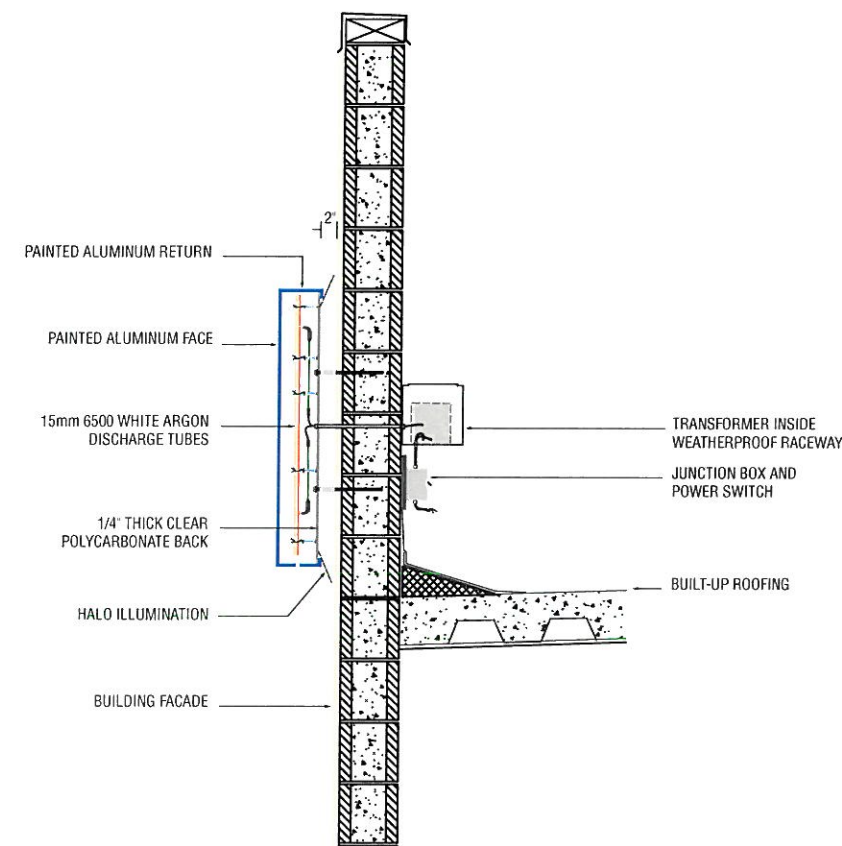
**Color Specifications**  
Face - BLUE 1  
Returns - BLUE 1



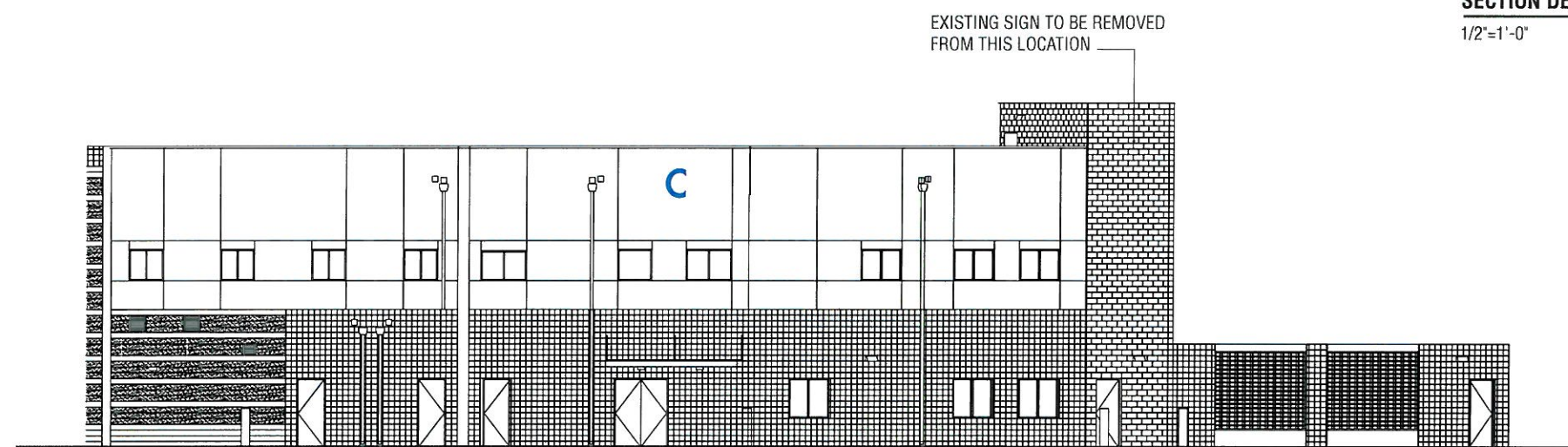
**3.4 BUILDING LETTER**  
SCALE: 1/2"=1'-0"



**ELEVATION REFERENCE**  
SCALE: 1/8"=1'-0"



**SECTION DETAIL**  
1/2"=1'-0"



**3.4 NORTH ELEVATION**  
SCALE: 1/16"=1'-0"

**Site Identification Sign /  
Backlit Halo Illuminated  
Blue Face Letter**

**AGS Sign Type**  
2.3iCUS

**Description**  
Internally illuminated backlit aluminum channel letter mounted to wall, glass electrode receptacle and remote transformer to identify facility building.

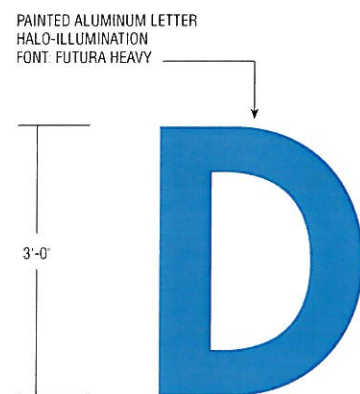
**Scale**  
As noted

**Illumination**  
Internal.  
Owner to provide electrical feed to sign location. All illuminated signs may be powered by either 120 or 277 volt electrical power feeds. The default for all illuminated signs is 120 volt. Final electrical connections by electrical contractor.

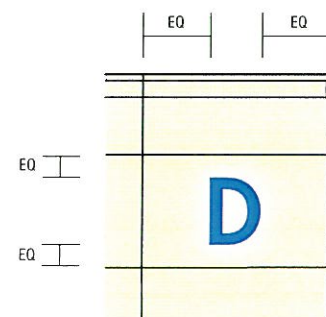
**Structure**  
Fabricated dimensional letters with aluminum returns and panels. Internal argon tubing provides illumination.

**Mounting**  
Suitable mechanical fasteners.

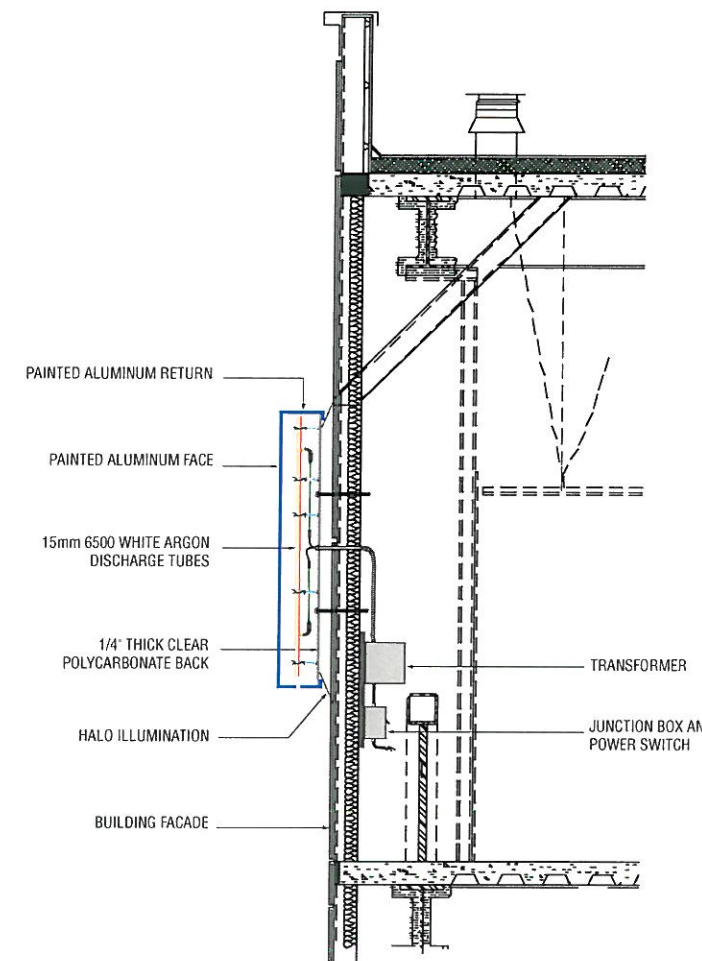
**Color Specifications**  
Face - BLUE 1  
Returns - BLUE 1



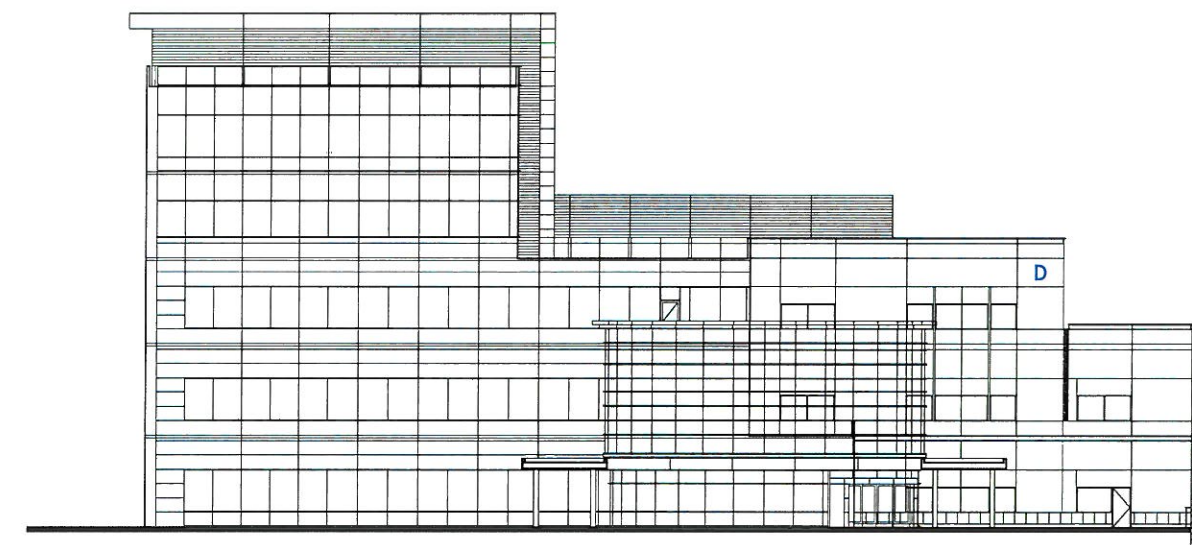
**3.5 BUILDING LETTER**  
SCALE: 1/2"=1'-0"



**NORTH ELEVATION REFERENCE**  
SCALE: 1/8"=1'-0"



**SECTION REFERENCE**  
SCALE: 1/2"=1'-0"  
TO BE VERIFIED WITH SECTION PLANS



**3.5 NORTH ELEVATION**  
SCALE: 1/32"=1'-0"



**Site Identification Sign /  
Backlit Halo Illuminated  
Blue Face Letter**

**AGS Sign Type**  
2.3iCUS

**Description**  
Internally illuminated backlit aluminum channel letter mounted to wall, glass electrode receptacle and remote transformer to identify facility building.

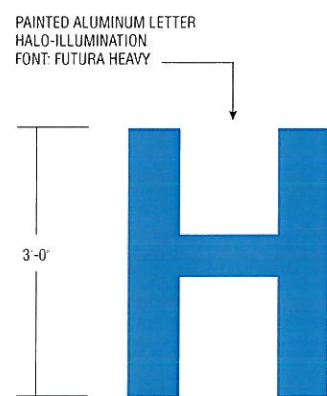
**Scale**  
As noted

**Illumination**  
Internal.  
Owner to provide electrical feed to sign location. All illuminated signs may be powered by either 120 or 277 volt electrical power feeds. The default for all illuminated signs is 120 volt. Final electrical connections by electrical contractor.

**Structure**  
Fabricated dimensional letters with aluminum returns and panels. Internal LED illumination.

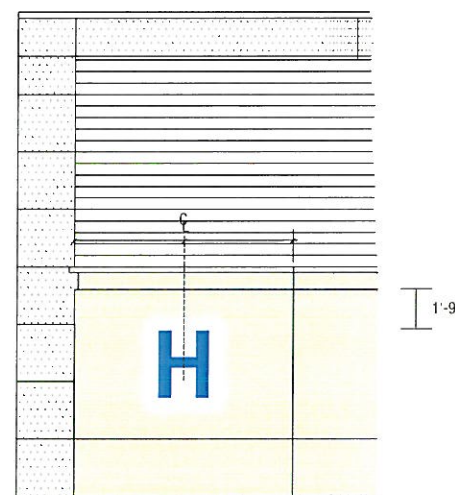
**Mounting**  
Suitable mechanical fasteners.

**Color Specifications**  
Face - BLUE 1  
Returns - BLUE 1



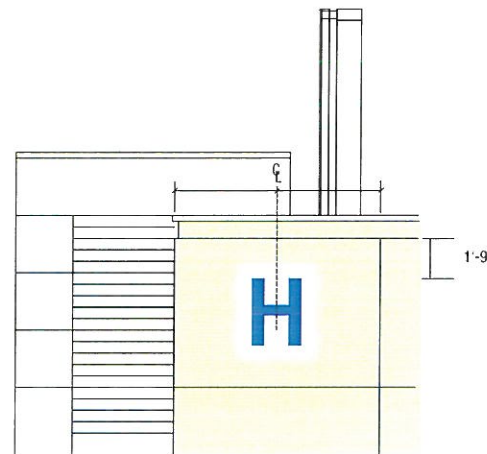
**BUILDING LETTER**  
SCALE: 1/2"=1'-0"

3.7



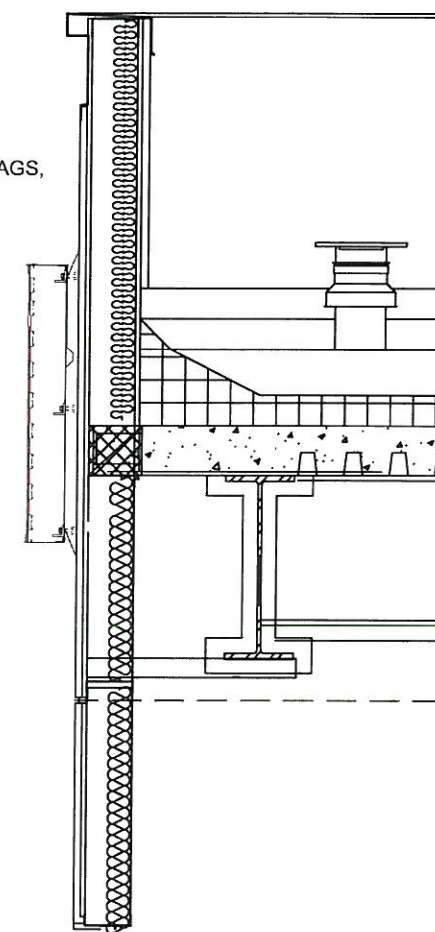
**NORTH ELEVATION REFERENCE**  
SCALE: 1/8"=1'-0"

3.6



**WEST ELEVATION REFERENCE**  
SCALE: 1/8"=1'-0"

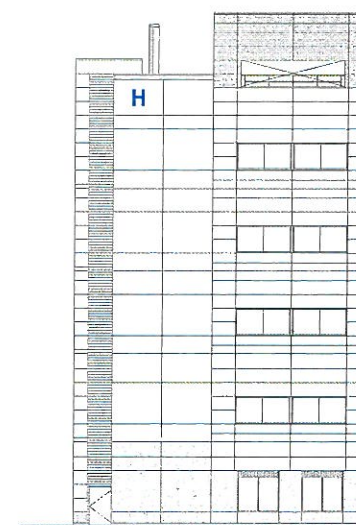
Note:  
Exact location to be determined with AGS, Architects and General Contractors



**WEST & NORTH SECTION REFERENCE**  
SCALE: 1/2"=1'-0"



3.7 **NORTH ELEVATION**  
NOT TO SCALE



3.6 **WEST ELEVATION**  
NOT TO SCALE

**Ambulance Identification Sign /  
Illuminated Red Face Letter  
No Raceway**

AGS Sign Type  
64 13i

**Description**  
Internally illuminated and back lit  
dimensional letters mounted to wall to  
identify ambulance entrance.

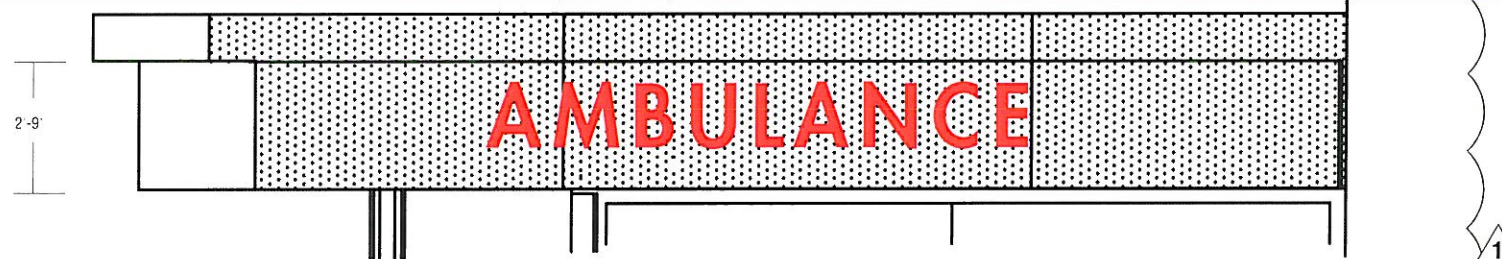
**Scale**  
As noted

**Illumination**  
Internal.  
Owner to provide electrical feed to sign  
location. All illuminated signs may be  
powered by either 120 or 277 volt  
electrical power feeds. The default for all  
illuminated signs is 120 volt. Final  
electrical connections by electrical  
contractor.

**Structure**  
Fabricated dimensional letters with  
aluminum returns and acrylic front panels.  
LED illumination.

**Mounting**  
Suitable mechanical fasteners.

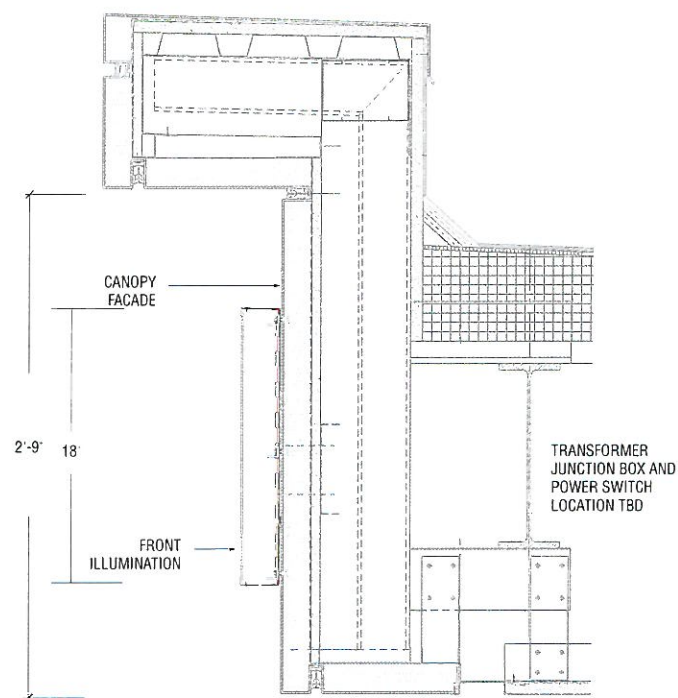
**Color Specifications**  
Face - Red 11  
Returns - Gray 5 or White 19



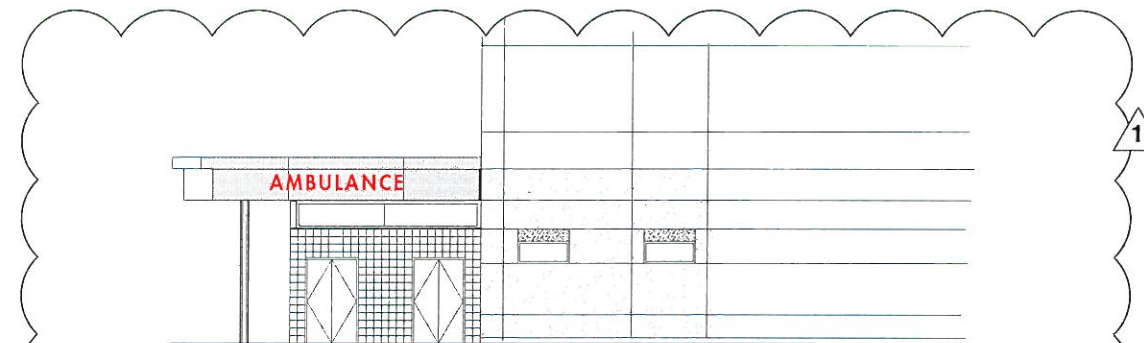
**4.8 CANOPY ELEVATION REFERENCE**  
SCALE: 1/4"=1'-0"



**4.8 SIGN ELEVATION**  
SCALE: 1"=1'-0"



**SECTION DETAIL**  
1"=1'-0"



**4.8 EAST ELEVATION**  
SCALE: 1/16"=1'-0"

**Ambulance Identification Sign /  
Illuminated Red Face Letter  
No Raceway**

**AGS Sign Type**  
64.13i

**Description**  
Internally illuminated dimensional letters  
mounted to wall to identify ambulance  
entrance.

**Scale**  
As noted

**Illumination**  
Internal  
Owner to provide electrical feed to sign  
location. All illuminated signs may be  
powered by either 120 or 277 volt  
electrical power feeds. The default for all  
illuminated signs is 120 volt. Final  
electrical connections by electrical  
contractor.

**Structure**  
Fabricated dimensional letters with  
aluminum returns and panels. LED  
illumination.

**Mounting**  
Suitable mechanical fasteners.

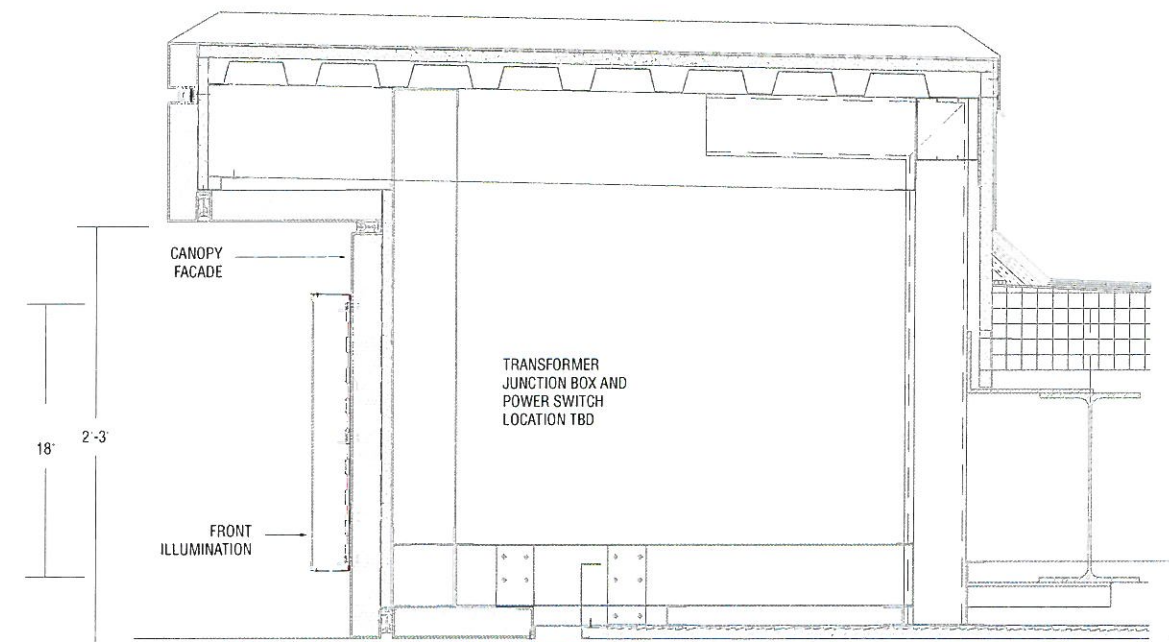
**Color Specifications**  
Face - Red 11  
Returns - Gray 5 or White 19



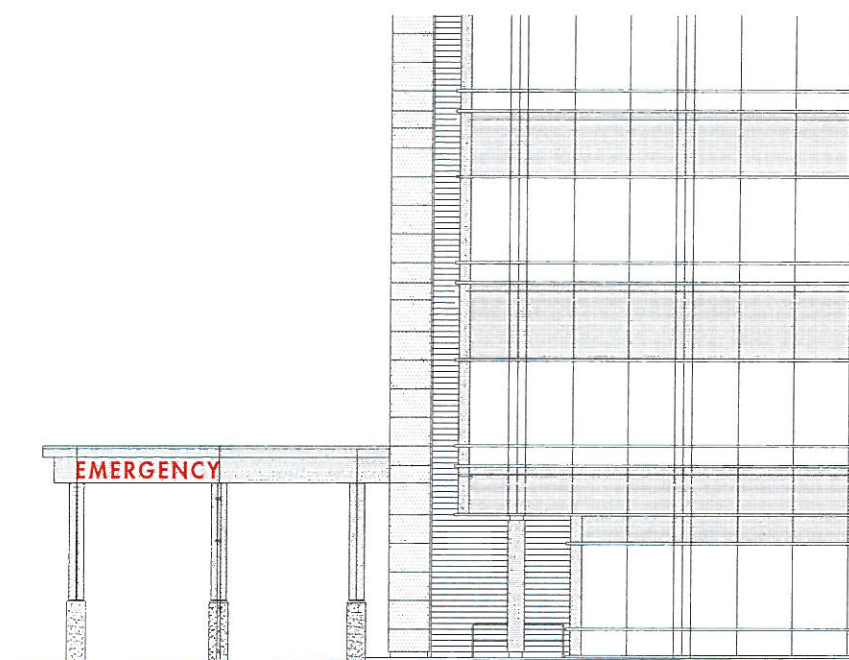
**4.9 CANOPY ELEVATION REFERENCE**  
SCALE: 1/4"=1'-0"



**4.9 SIGN ELEVATION**  
SCALE: 1"=1'-0"



**SECTION DETAIL**  
1"=1'-0"



**4.9 NORTH ELEVATION**  
SCALE: 1/16"=1'-0"

**Changeable Directional Sign**

Non-illuminated Cabinet on Concrete Tile Base

**Description**

Aluminum Cabinet structure with copy providing direction information.

**Scale**

As noted

**Sign Area**

18.75 square feet per side

**Illumination**

Non-illuminated

**Structure**

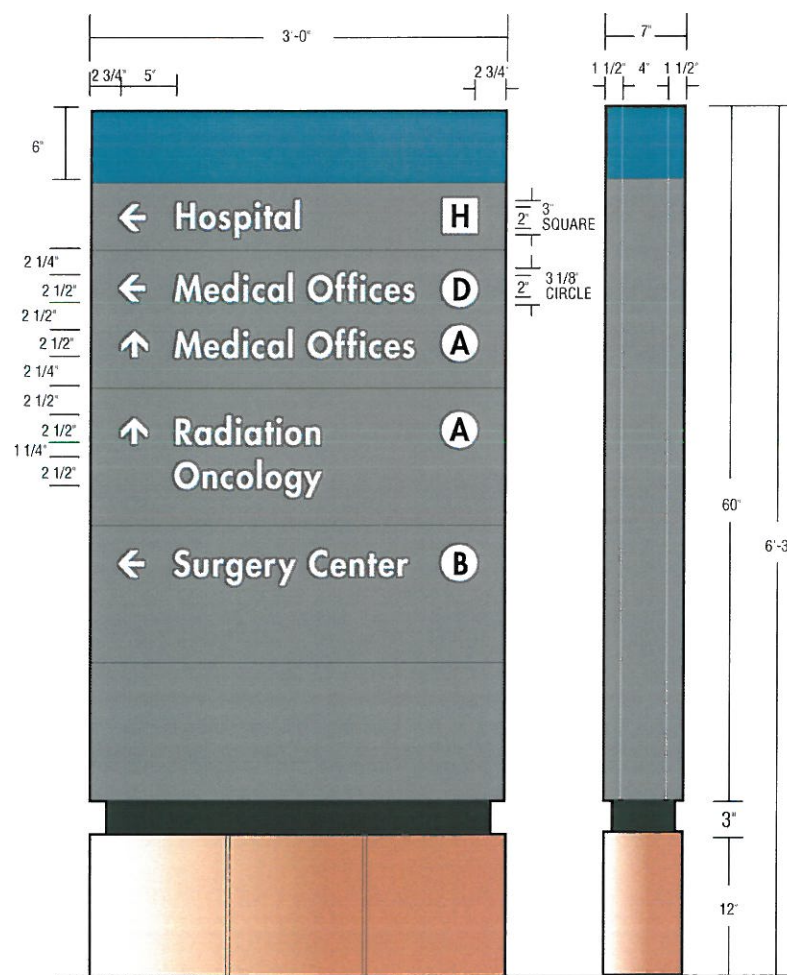
Painted aluminum sign cabinet with extruded interior support frame.

**Graphics**

DIRECTIONAL PANELS - 12x36DR  
DIRECTIONAL COPY - Futura Heavy, 2 1/2" tall upper and lower case, flushed left, pressure sensitive vinyl applied to sign surface.

**Color Specifications**

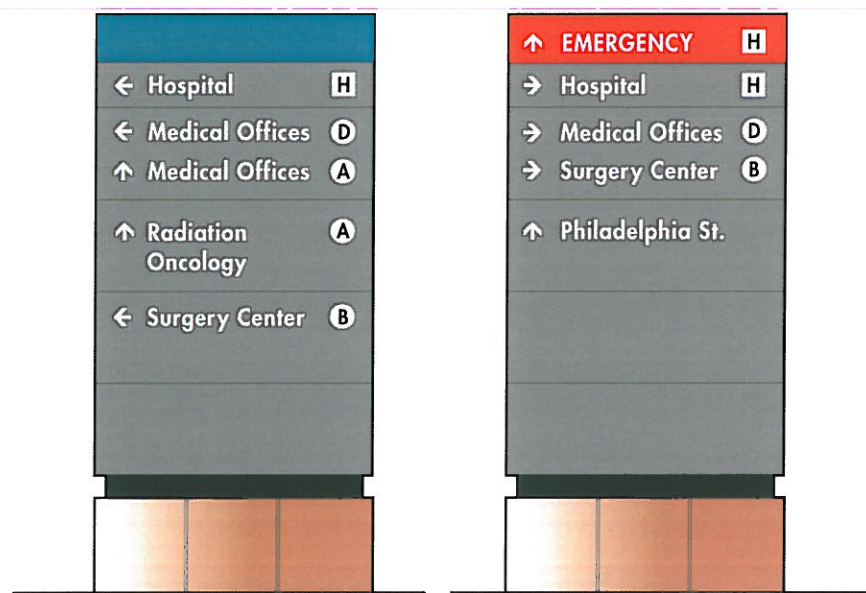
Header- BLUE 1 or RED 9  
Directional panel - MED. GREY 4  
Reveal - BLACK 6  
Graphics - WHITE 16  
Base - 12" x 12" COPRA RED QUARTZITE TILE



**ELEVATION DETAIL**

SCALE: 3/4"=1'-0"

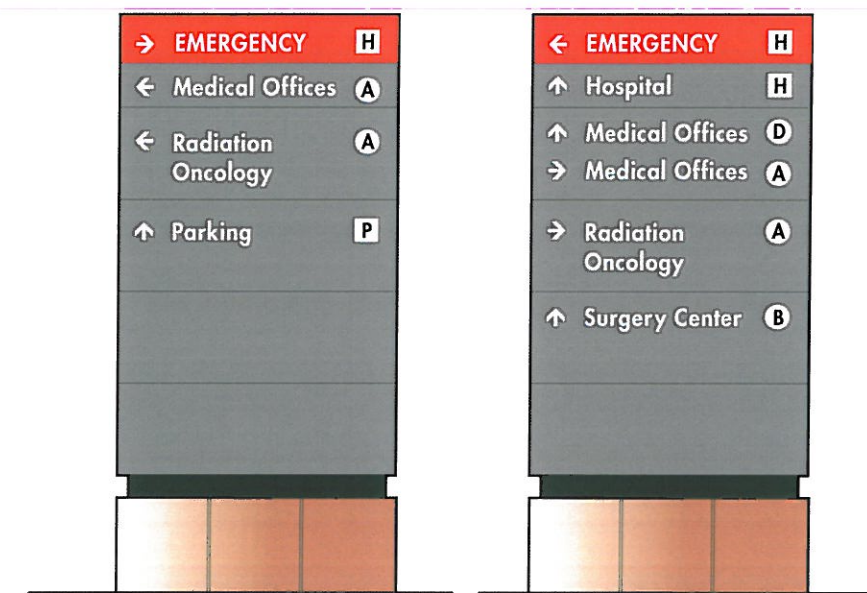
12" x 12" COPRA RED QUARTZITE  
CONSTRUCTED TO SURROUND CONCRETE WALL  
ON FOUR SIDES TO MATCH SITE  
IDENTIFICATION SIGN/ MONUMENT



**5.2 EAST ELEVATION**

SCALE: 1/2"=1'-0"  
NOTE: Existing sign cabinet to be refurbished and moved to new location

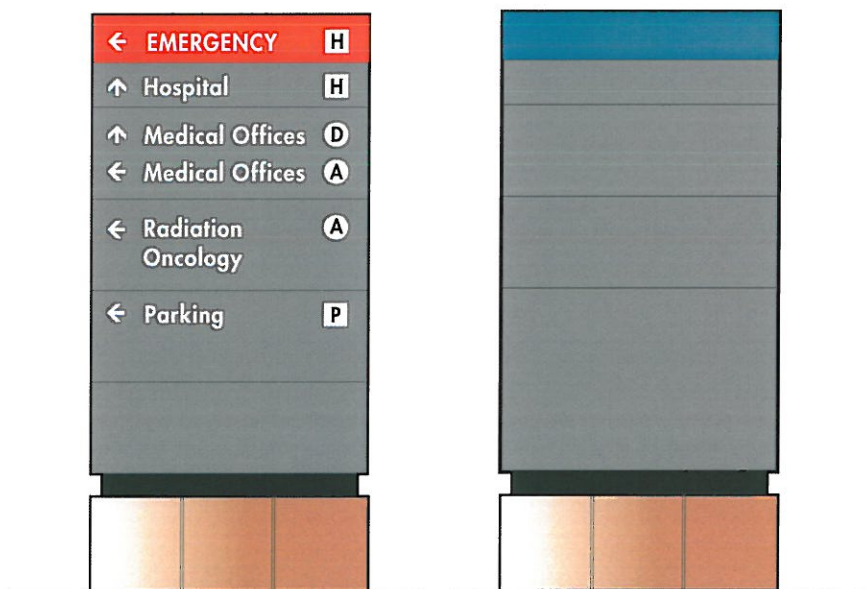
**WEST ELEVATION**



**5.4 SOUTH ELEVATION**

SCALE: 1/2"=1'-0"  
NOTE: Existing sign cabinet to be moved to new location

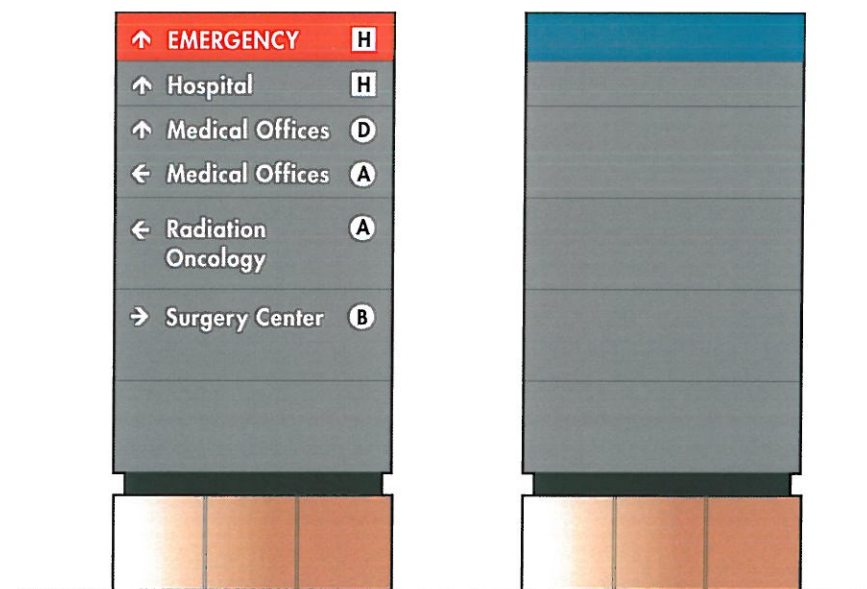
**NORTH ELEVATION**



**5.6 WEST ELEVATION**

SCALE: 1/2"=1'-0"  
NOTE: Existing sign cabinet to be refurbished and moved to new location

**EAST ELEVATION**



**5.7 WEST ELEVATION**

SCALE: 1/2"=1'-0"  
NOTE: Existing sign cabinet to be repainted and new vinyl applied

**EAST ELEVATION**



KAISER ONTARIO-VINEYARD MEDICAL CENTER  
CAMPUS  
EXTERIOR - SIGN TYPE 5  
2006.046 | 03.01.10

**G-5.0**

**Changeable Directional Sign**

Non-illuminated Cabinet on Concrete Tile Base

**Description**

Aluminum Cabinet structure with copy providing direction information.

**Scale**

As noted

**Sign Area**

18.75 square feet per side

**Illumination**

Non-illuminated

**Structure**

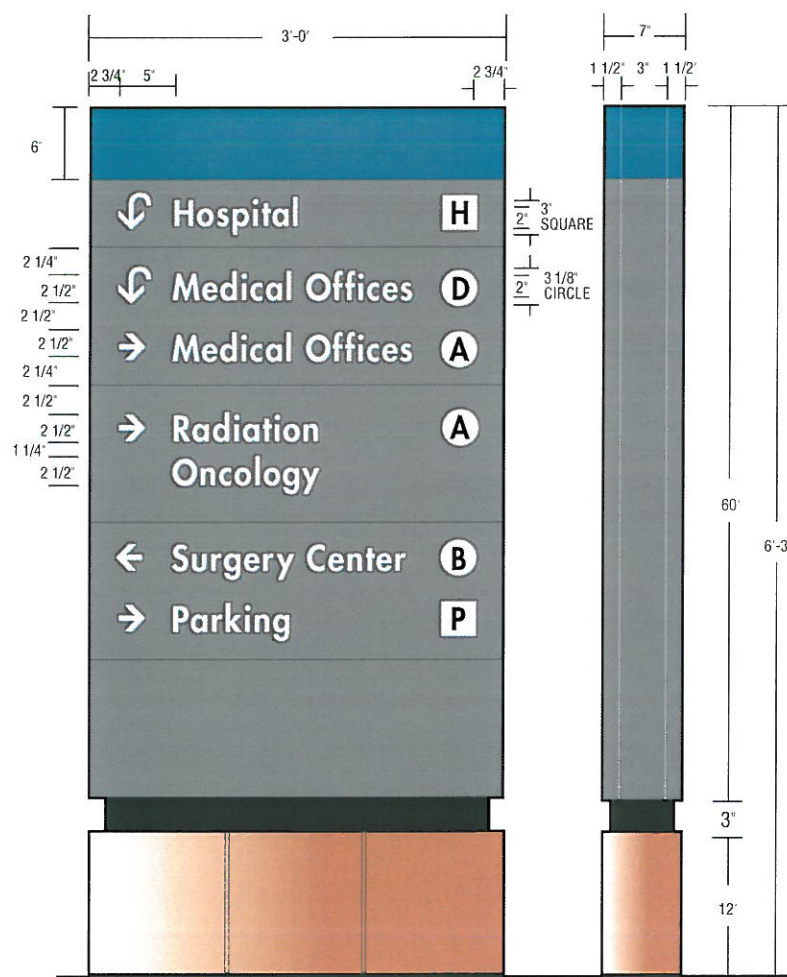
Painted aluminum sign cabinet with extruded interior support frame.

**Graphics**

DIRECTIONAL PANELS - 12x36DR  
DIRECTIONAL COPY - Futura Heavy, 2 1/2" tall upper and lower case, flushed left, pressure sensitive vinyl applied to sign surface

**Color Specifications**

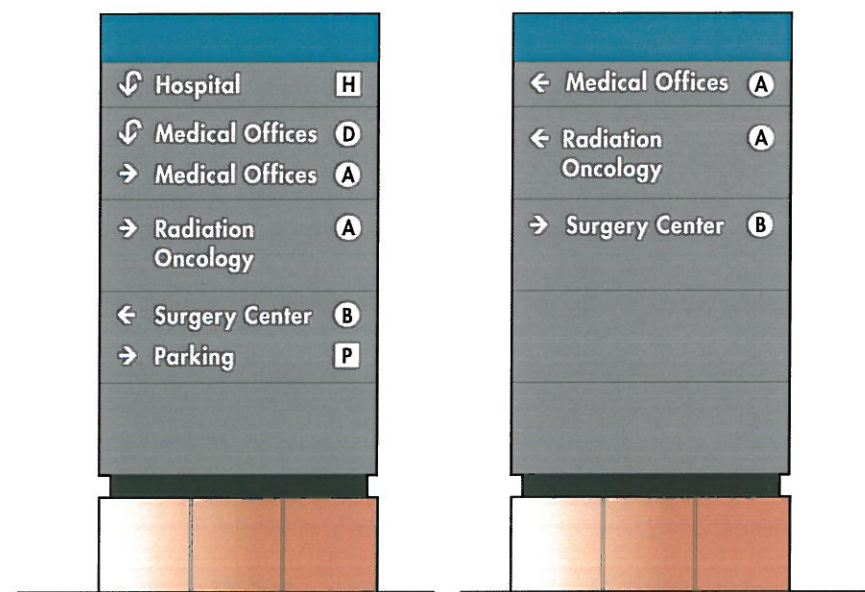
Header - BLUE 1 or RED 9  
Directional panel - MED. GREY 4  
Reveal - BLACK 6  
Graphics - WHITE 16  
Base - 12" x 12" COPRA RED QUARTZITE



**ELEVATION DETAIL**

SCALE: 3/4"=1'-0"

12" x 12" COPRA RED QUARTZITE  
CONSTRUCTED TO SURROUND CONCRETE WALL  
ON FOUR SIDES TO MATCH SITE  
IDENTIFICATION SIGN/MONUMENT

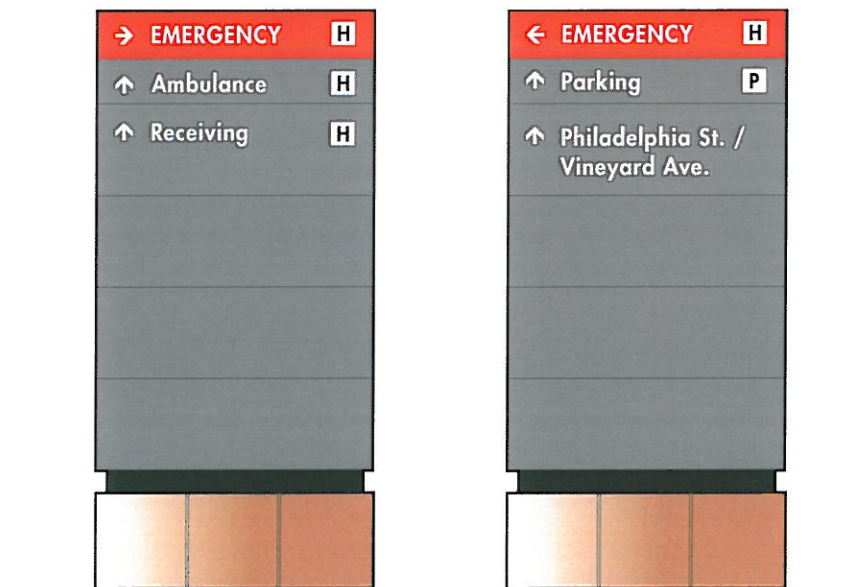


**5.9 EAST ELEVATION**

SCALE: 1/2"=1'-0"

NOTE: Existing sign cabinet to be repainted and new vinyl applied

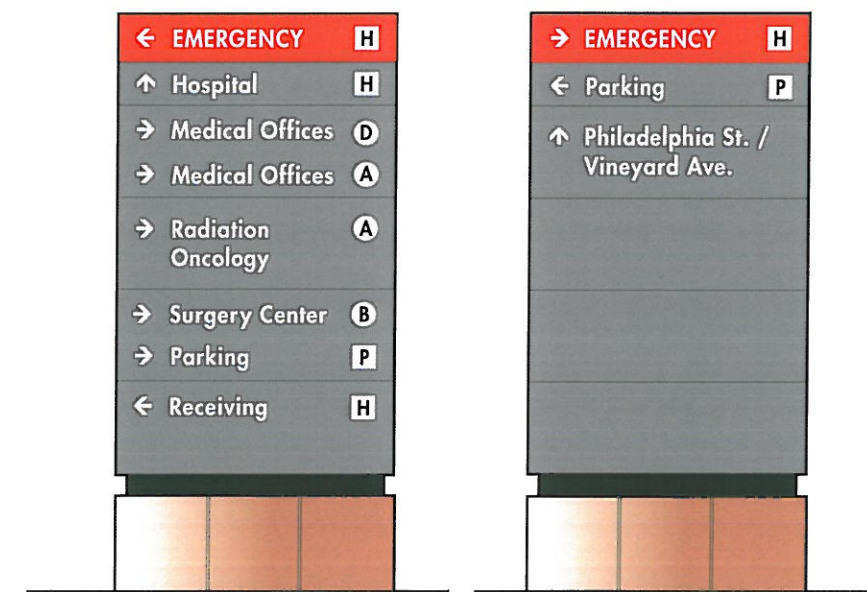
**WEST ELEVATION**



**5.11 WEST ELEVATION**

SCALE: 1/2"=1'-0"

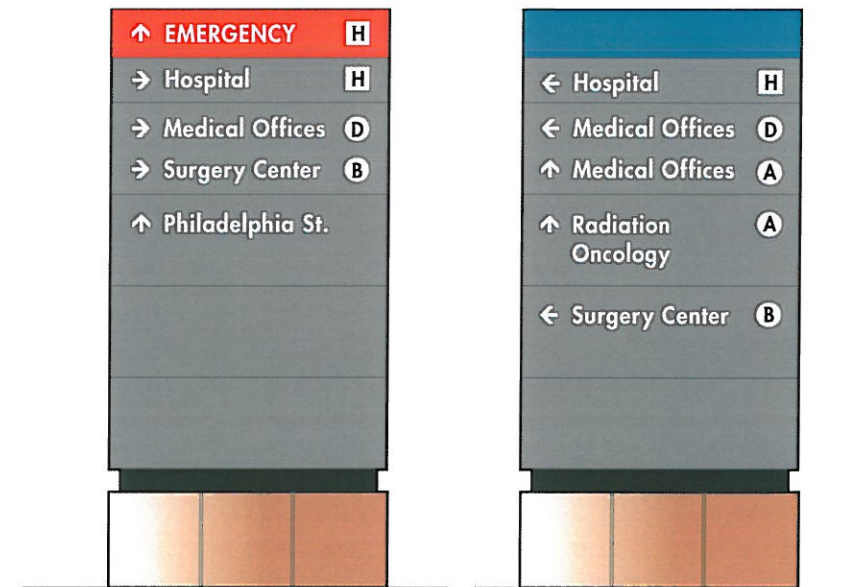
**EAST ELEVATION**



**5.10 NORTH ELEVATION**

SCALE: 1/2"=1'-0"

**SOUTH ELEVATION**



**5.13 WEST ELEVATION**

SCALE: 1/2"=1'-0"

**EAST ELEVATION**

**Changeable Directional Sign**

Non-illuminated Cabinet on Concrete Tile Base

**Description**

Aluminum Cabinet structure with copy providing direction information.

**Scale**

As noted

**Sign Area**

18.75 square feet per side

**Illumination**

Non-illuminated

**Structure**

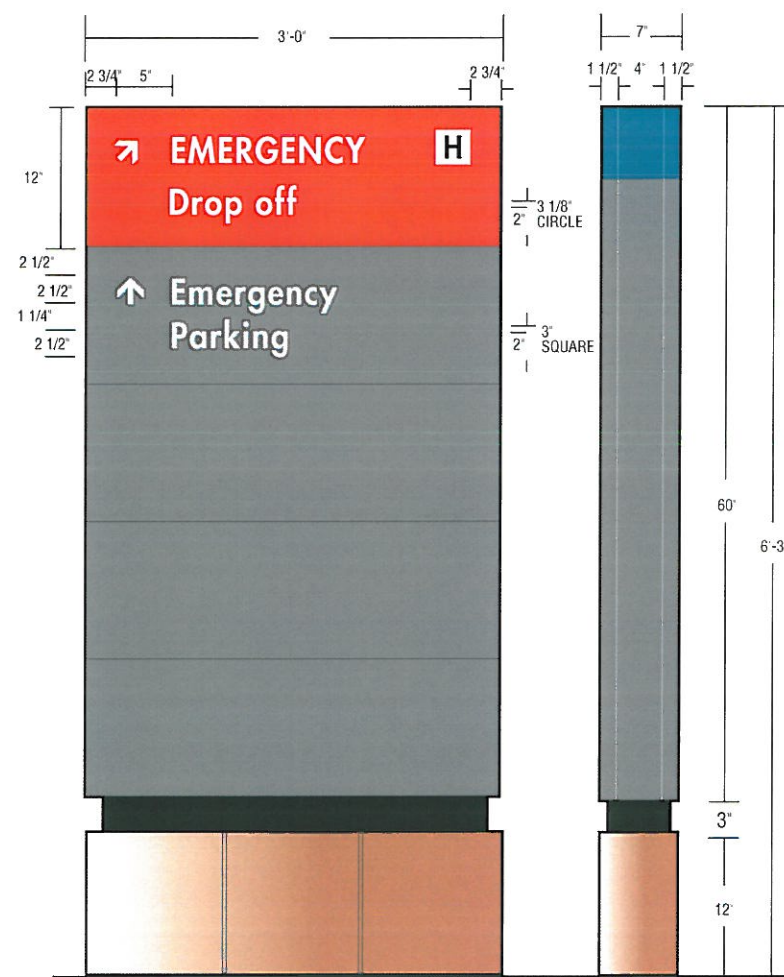
Painted aluminum sign cabinet with extruded interior support frame.

**Graphics**

DIRECTIONAL PANELS - 12x36DR  
DIRECTIONAL COPY - Futura Heavy, 2 1/2" tall upper and lower case, flushed left, pressure sensitive vinyl applied to sign surface.

**Color Specifications**

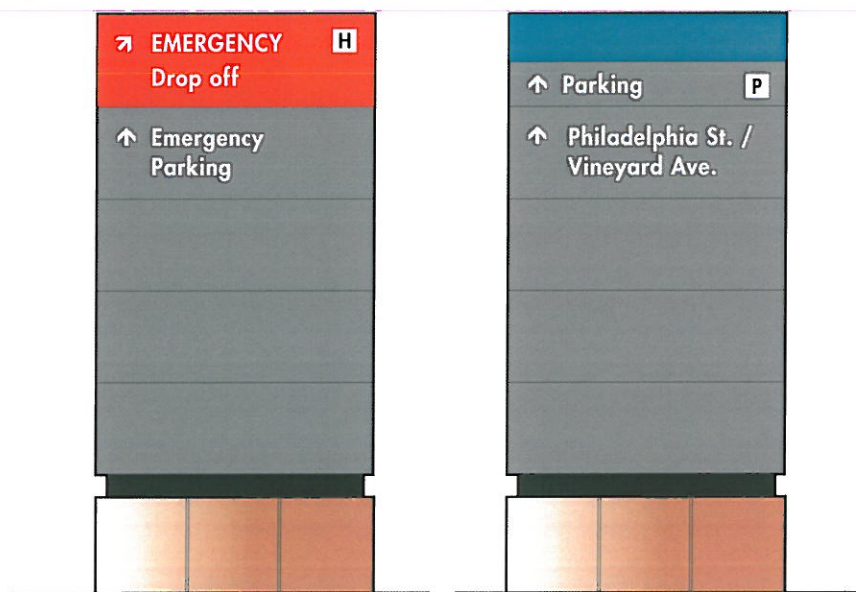
Header- BLUE 1 or RED 9  
Directional panel - MED. GREY 4  
Reveal - BLACK 6  
Graphics - WHITE 16  
Base - 12" x 12" COPRA RED QUARTZITE



**ELEVATION DETAIL**

SCALE: 3/4"=1'-0"

12" x 12" COPRA RED QUARTZITE  
CONSTRUCTED TO SURROUND CONCRETE WALL  
ON FOUR SIDES TO MATCH SITE  
IDENTIFICATION SIGN/MONUMENT



**5.14 NORTH ELEVATION**

SCALE: 1/2"=1'-0"

**SOUTH ELEVATION**

**Changeable Directional Sign**  
Non-illuminated Cabinet on Concrete Tile Base

**Description**  
Aluminum Cabinet structure with copy providing direction information

**Scale**  
As noted

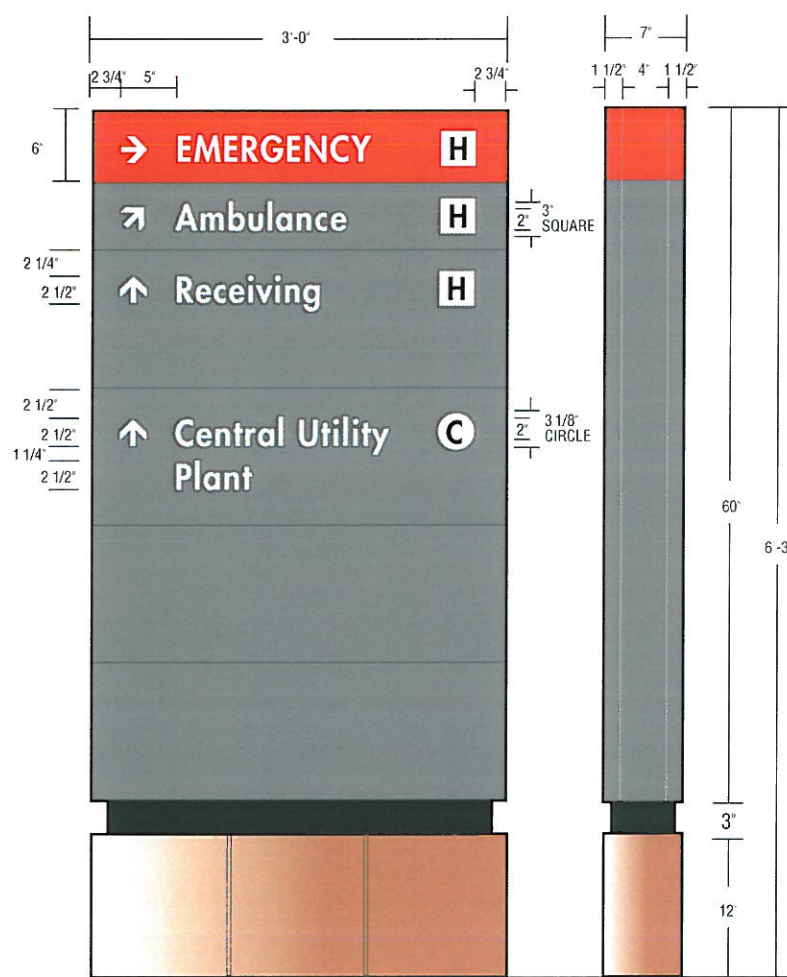
**Sign Area**  
18.75 square feet per side

**Illumination**  
Non-illuminated

**Structure**  
Painted aluminum sign cabinet with extruded interior support frame

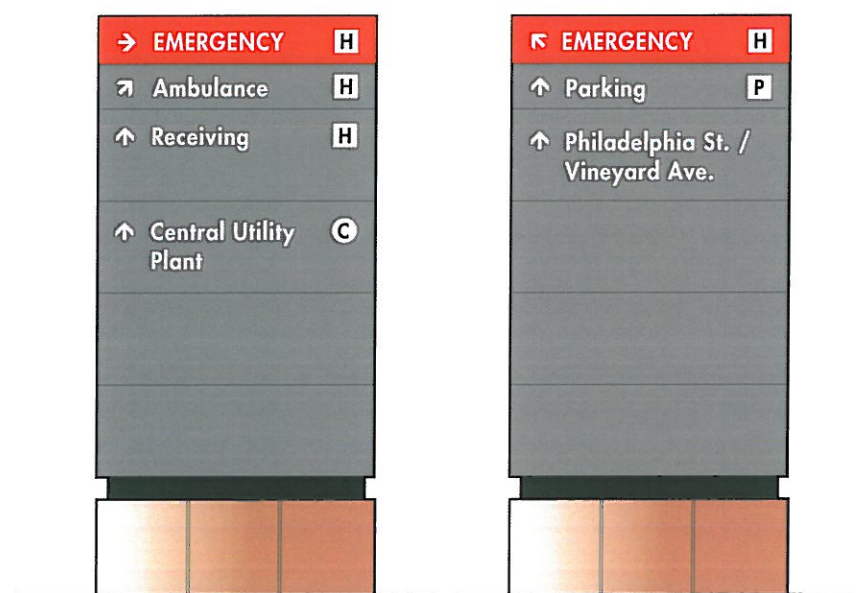
**Graphics**  
DIRECTIONAL PANELS - 12x36DR  
DIRECTIONAL COPY - Futura Heavy, 2 1/2" tall upper and lower case, flushed left, pressure sensitive vinyl applied to sign surface.

**Color Specifications**  
Header- RED 9  
Directional panel - MED. GREY 4  
Reveal - BLACK 6  
Graphics - WHITE 16  
Base - 12" x 12" COPRA RED QUARTZITE TILE



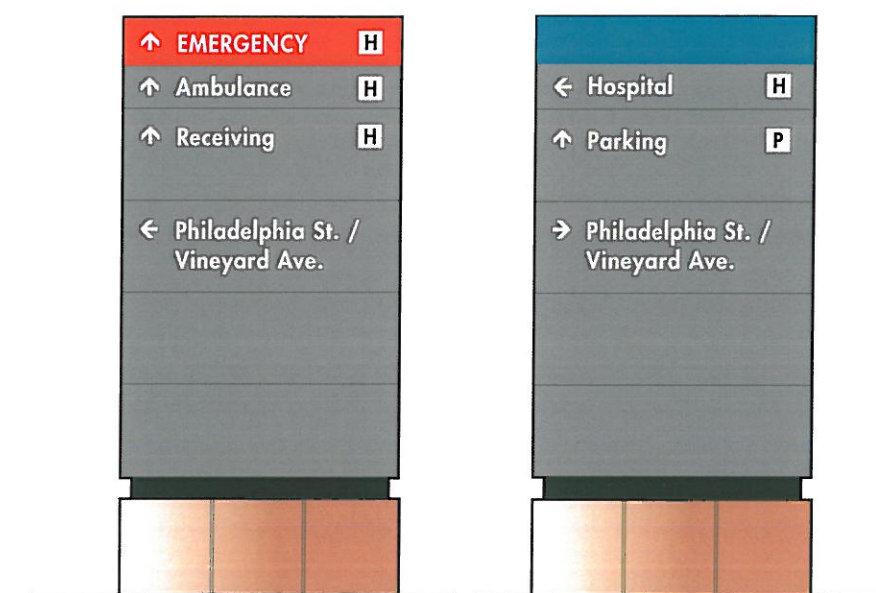
**ELEVATION DETAIL**  
SCALE: 3/4"=1'-0"

12" x 12" COPRA RED QUARTZITE  
CONSTRUCTED TO SURROUND CONCRETE WALL  
ON FOUR SIDES TO MATCH SITE  
IDENTIFICATION SIGN/MONUMENT



**5.18** NORTH ELEVATION  
SCALE: 1/2"=1'-0"

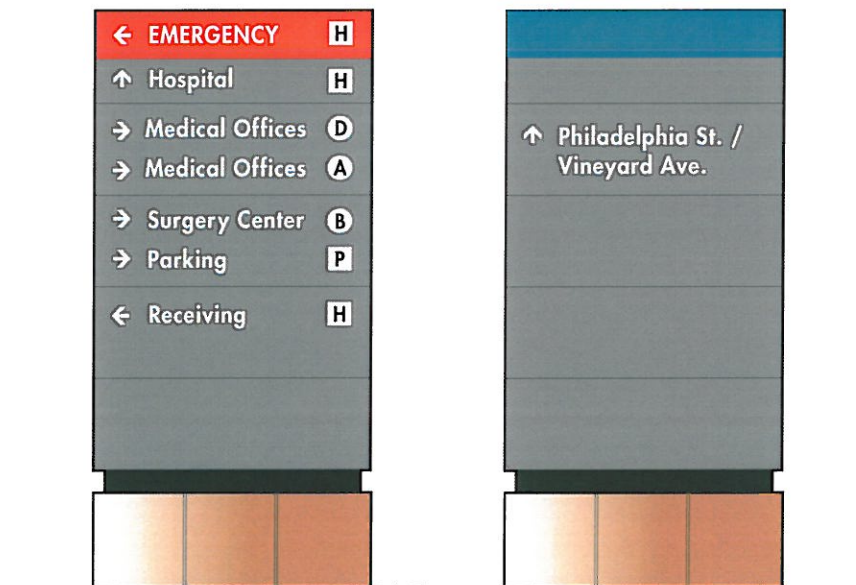
SOUTH ELEVATION



**5.19** WEST ELEVATION  
SCALE: 1/2"=1'-0"

EAST ELEVATION

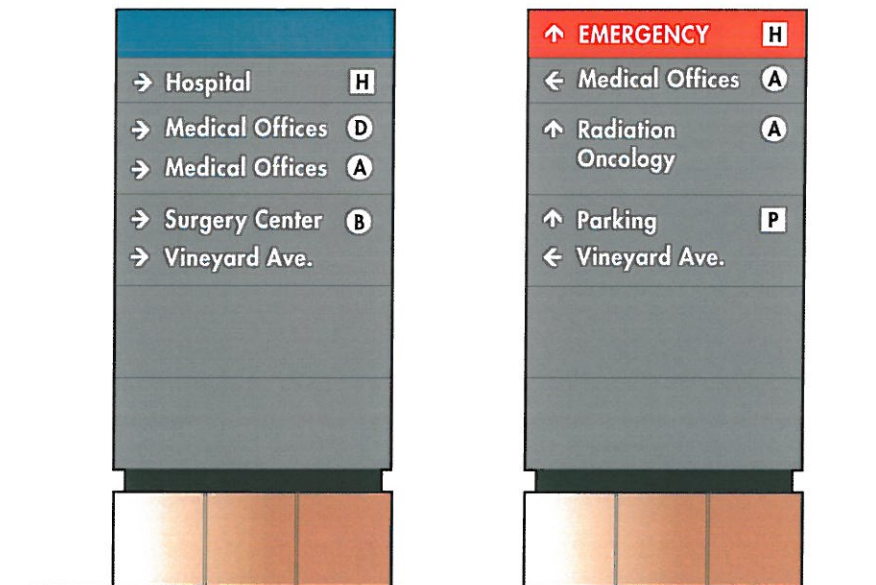
PROPOSED



**5.20** NORTH ELEVATION  
SCALE: 1/2"=1'-0"

SOUTH ELEVATION

PROPOSED



**5.21** NORTH ELEVATION  
SCALE: 1/2"=1'-0"

SOUTH ELEVATION

PROPOSED

2

**Site Identification and Directional Sign Illuminated Monolith**

**Description**  
Freestanding monolith sign providing identification.

**Scale**  
As noted

**Sign Area**  
42 square feet per side

**Illumination**  
Internal - Fluorescent lamps mounted within sign cabinet are to be accessible. Owner to provide electrical feed to sign location. All illuminated signs may be powered by either 120 or 277 volt electrical power feeds. The default for all illuminated signs is 120 volt. Final electrical connections by electrical contractor. Kaiser Permanente to provide external illumination when necessary.

**Structure**  
Painted aluminum sign cabinet with extruded interior support frame, mounted to concrete base with stainless steel anchors. Refer to Detail C.12i.

**Graphics**  
LOGO - Translucent acrylic logo, 16" tall, stencil cut and pushed through sign face.

EMERGENCY COPY - Futura Heavy, 4" and 2" tall upper and lower case, flushed left, translucent acrylic letters are stencil cut and pushed through sign face.

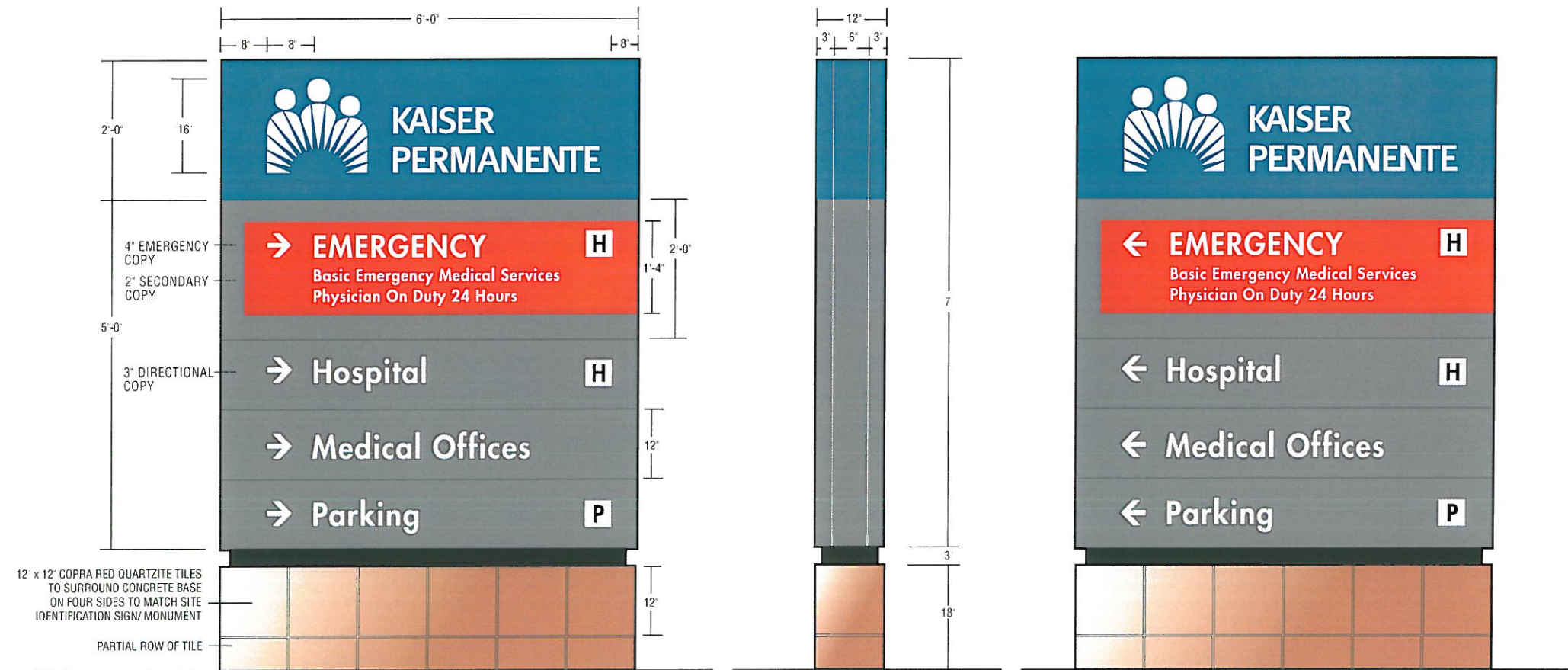
SECONDARY COPY - Futura Medium, 2" tall upper and lower case, flushed left, translucent acrylic letters are stencil cut and pushed through sign face.

DIRECTIONAL COPY - Futura Heavy, 3" tall upper and lower case, flushed left, translucent acrylic letters are stencil cut and pushed through sign face.

SERVICE PANEL - 16x68EM

DIRECTIONAL PANEL - 12x72DR

**Color Specifications**  
Primary panel - BLUE 1  
Secondary panel - MED GREY 4  
Frame - Match adjacent face  
Retainer - Match adjacent face  
Service panel 16x68EM - RED 11  
Base reveal - BLACK 6  
Graphics - WHITE 14



10.1

**WEST ELEVATION**  
SCALE: 1/2"=1'-0"  
NOTE: Existing sign cabinet from Phase 1 with new copy panels

**EAST ELEVATION**  
SCALE: 1/2"=1'-0"



**Changeable Directional Sign**

Internally illuminated Cabinet  
on Concrete/Tile Base

**Description**

Freestanding aluminum Cabinet structure with copy providing direction information.

**Scale**

As noted

**Sign Area**

18.75 square feet per side

**Illumination**

Internal

**Structure**

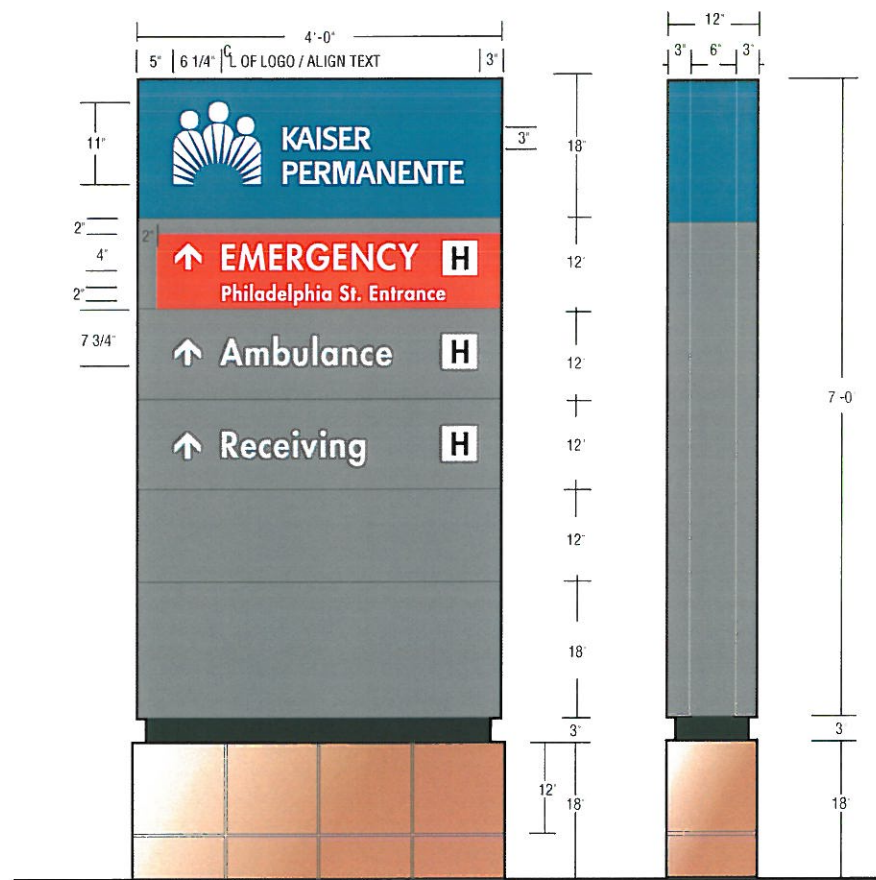
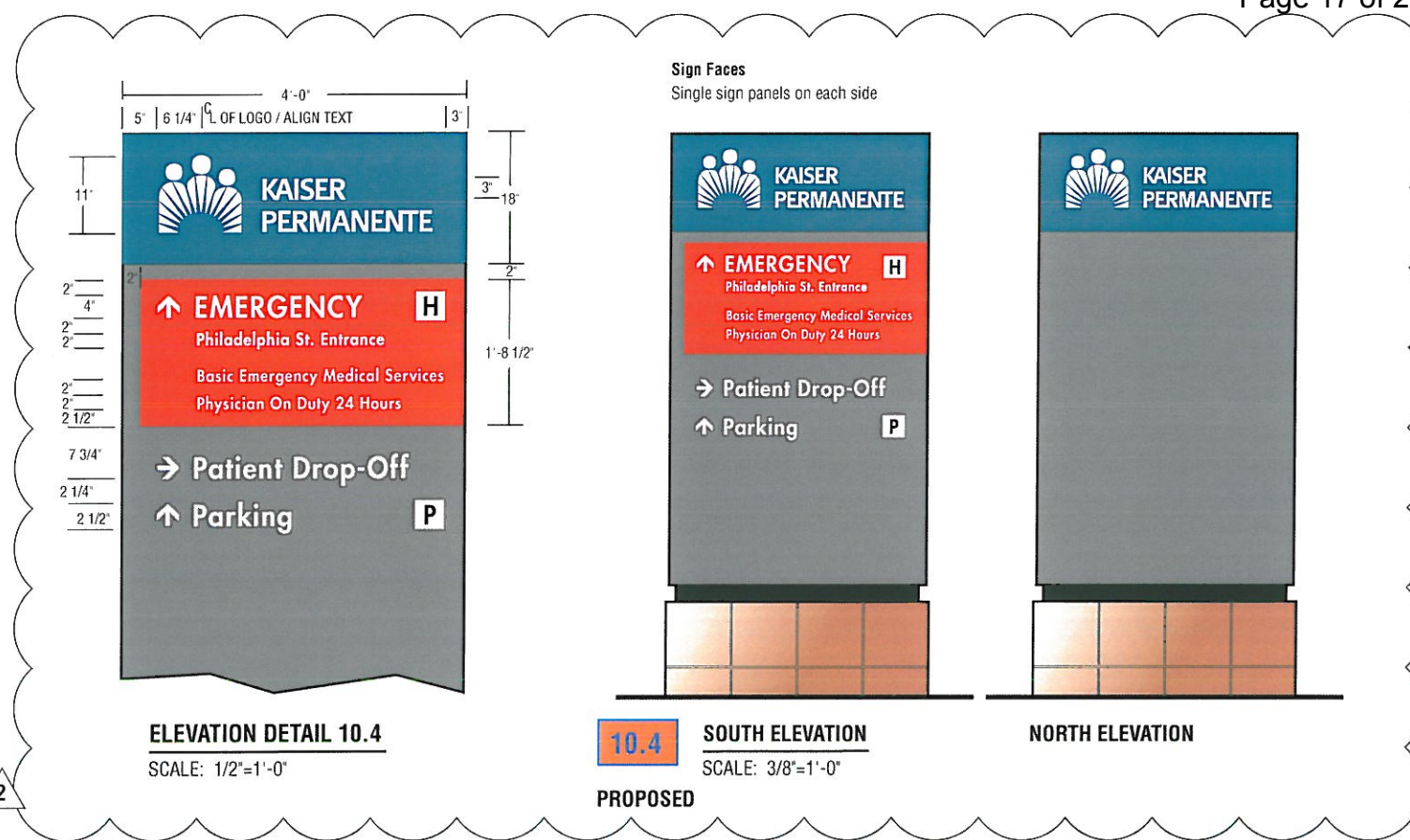
Painted aluminum sign cabinet with extruded interior support frame.

**Graphics**

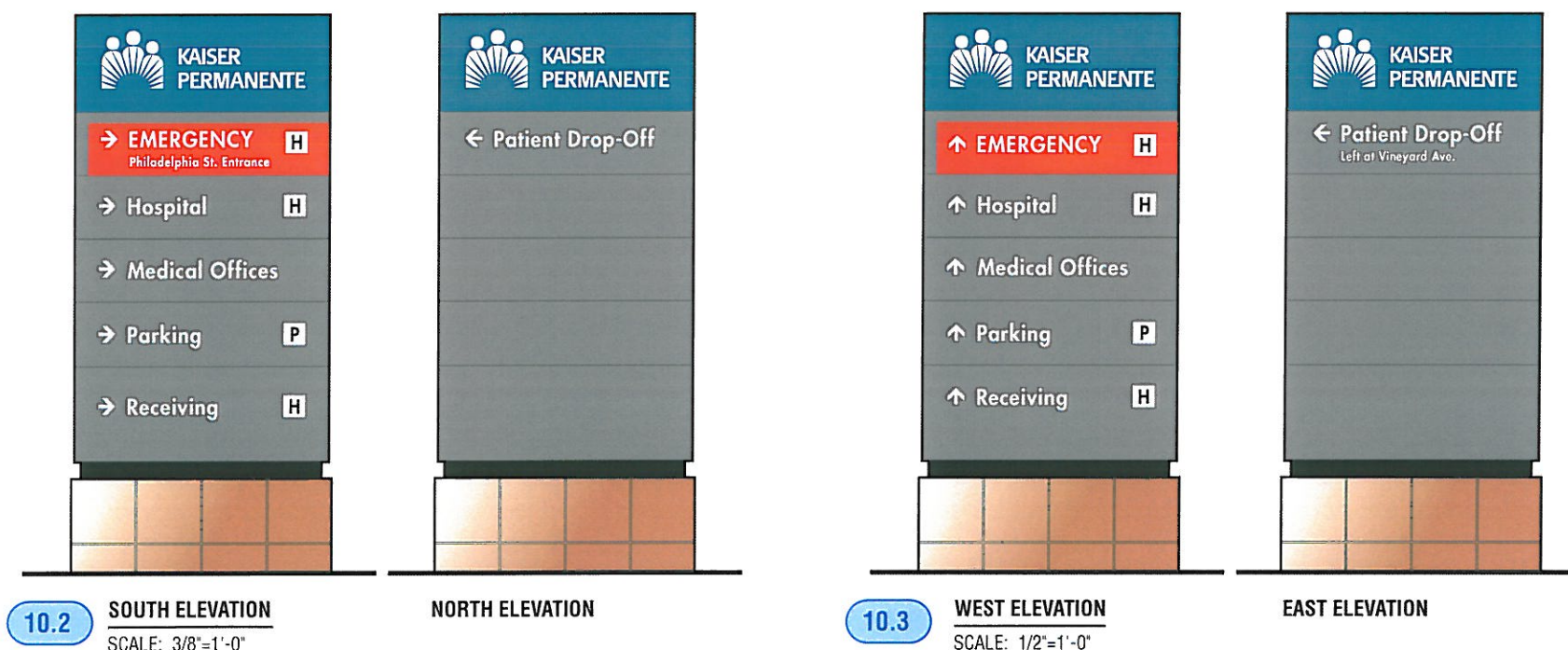
LOGO- Translucent acrylic logo, 11" tall. stencil cut and pushed through flush with sign face.  
DIRECTIONAL PANELS - 12x48DR  
DIRECTIONAL COPY - Futura Heavy, 4" tall upper and lower case, flushed left, translucent acrylic letters are stencil cut and pushed through flush with sign face.  
SERVICE PANEL- 18x48  
SERVICE COPY - Futura Heavy, 2 1/2" and 4" tall upper and lower case, flushed left, translucent acrylic letters are stencil cut and pushed through flush with sign face.

**Color Specifications**

Header/Logo Panel- BLUE 1  
Service Panel - RED 11  
Directional panel - MED. GREY 4  
Reveal - BLACK 6  
Graphics - WHITE 14  
Base - 12" x 12" COPRA RED QUARTZITE TILE



12" x 12" COPRA RED QUARTZITE CONSTRUCTED TO SURROUND CONCRETE WALL ON FOUR SIDES TO MATCH SITE IDENTIFICATION SIGN/MONUMENT



KAISER ONTARIO-VINEYARD MEDICAL CENTER  
CAMPUS  
EXTERIOR - SIGN TYPE 22.61iCUS  
2006.046 | 03.01.10

**G-10.1**

**Site Identification and Directional Sign Illuminated Monolith**

**Description**

Freestanding monolith sign providing identification for emergency facilities.

**AGS Sign Type**

16.41i

**Scale**

As noted

**Sign Area**

43 square feet per side

**Illumination**

Internal - Fluorescent lamps mounted within sign cabinet are to be accessible. Owner to provide electrical feed to sign location. All illuminated signs may be powered by either 120 or 277 volt electrical power feeds. The default for all illuminated signs is 120 volt. Final electrical connections by electrical contractor. Kaiser Permanente to provide external illumination when necessary.

**Structure**

Painted aluminum sign cabinet with extruded interior support frame, mounted to concrete base with stainless steel anchors. Refer to Detail C.12i.

**Graphics**

LOGO - Translucent acrylic logo, 9" tall, stencil cut and pushed through flush with sign face.

EMERGENCY COPY - Futura Heavy, 4" tall upper and lower case, flushed left, translucent acrylic letters are stencil cut and pushed through flush with sign face.

DIRECTIONAL COPY - Futura Heavy, 3" tall upper and lower case, flushed left, translucent acrylic letters are stencil cut and pushed through flush with sign face.

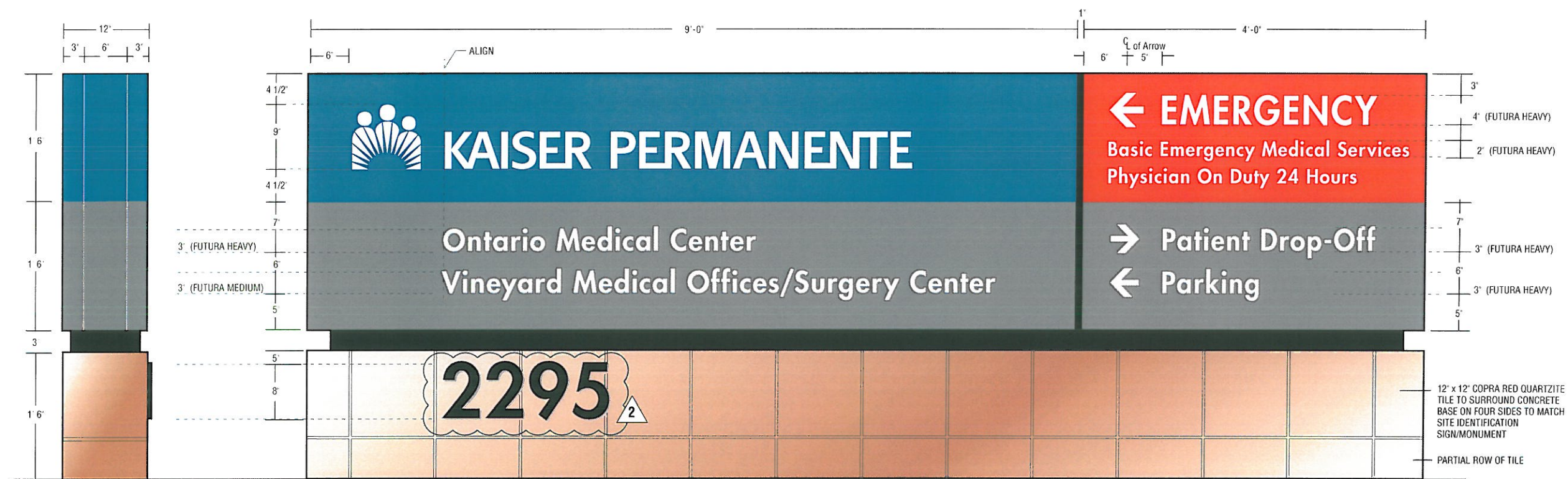
ADDRESS NUMERALS - Futura Heavy, 8" tall x 1/2" thick flat cut aluminum dimensional numerals pin mounted flush to architectural base. Color: Dark Grey

SERVICE PANEL - 18x48EM or 18X48NO

DIRECTIONAL PANEL - 18x48DR or 9X48DR

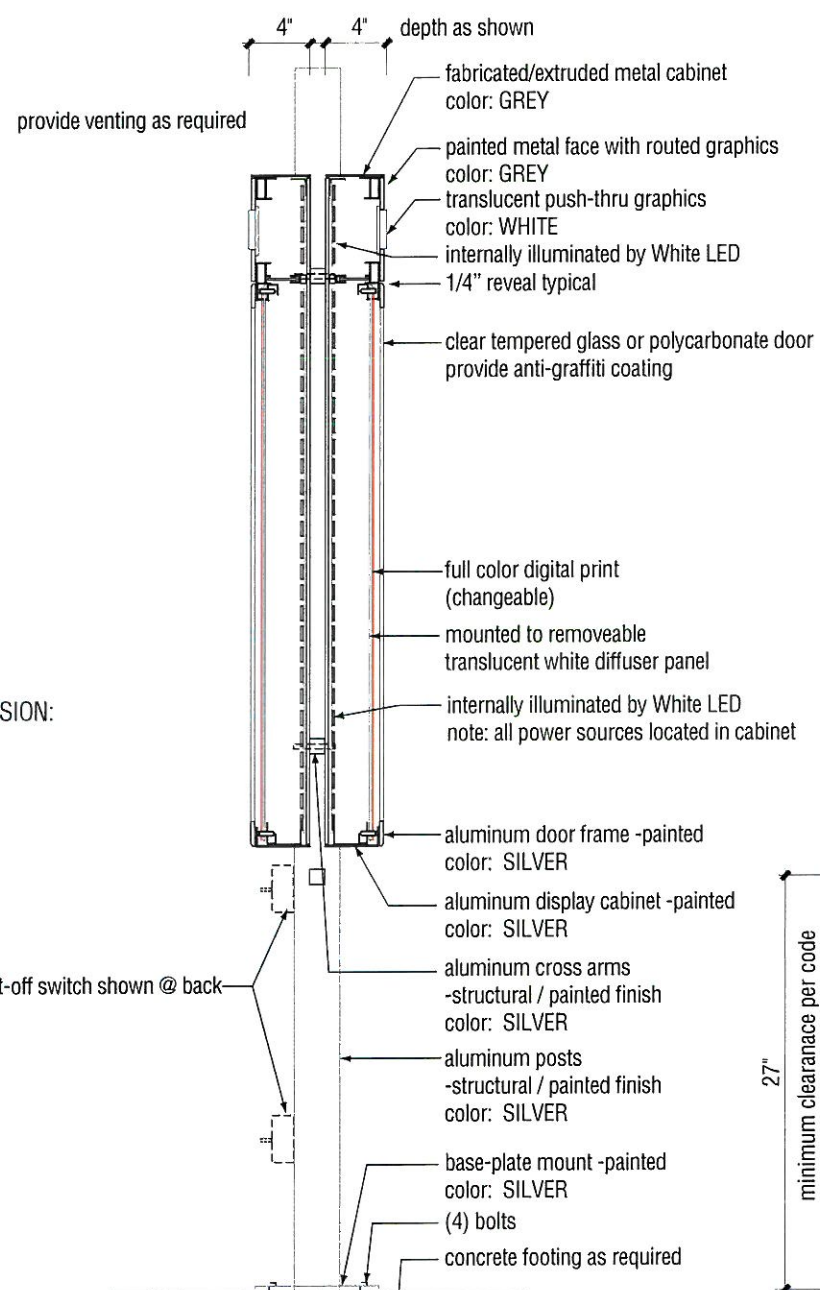
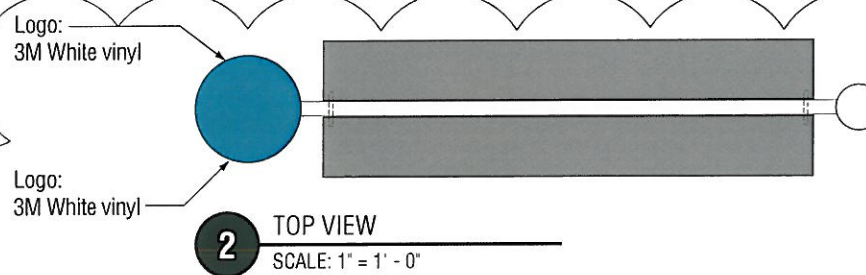
**Color Specifications**

Primary panel - BLUE 1  
Secondary panel - MED. GREY 4  
Frame - Match adjacent face  
Retainer - Match adjacent face  
Service panel 18x48EM - RED 11  
Base reveal - BLACK 6  
Graphics - WHITE 14  
Address Numerals - DARK GREY 5



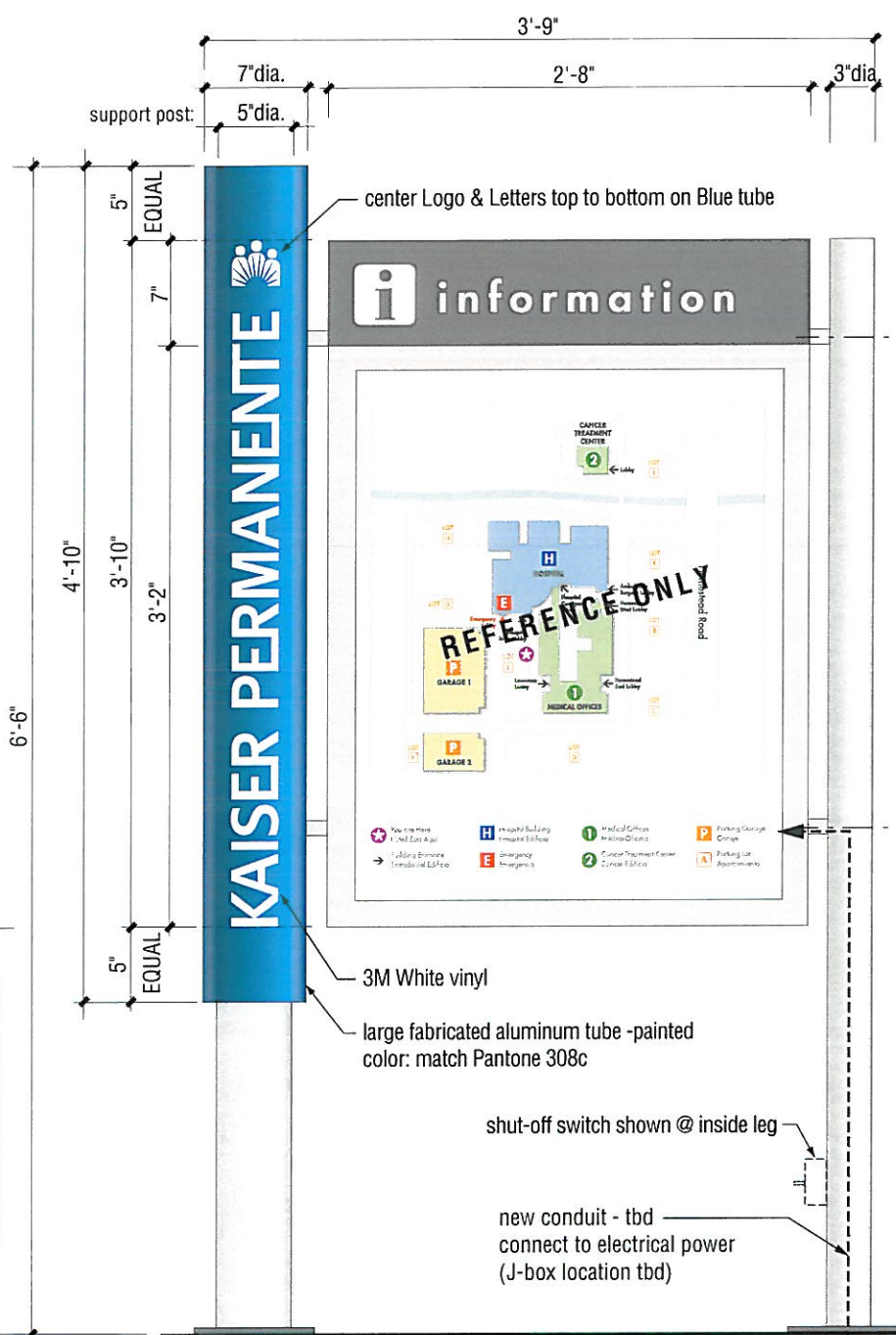
**SIDE ELEVATION**

**11 NORTHWEST ELEVATION**  
SCALE: 3/4"=1'-0"

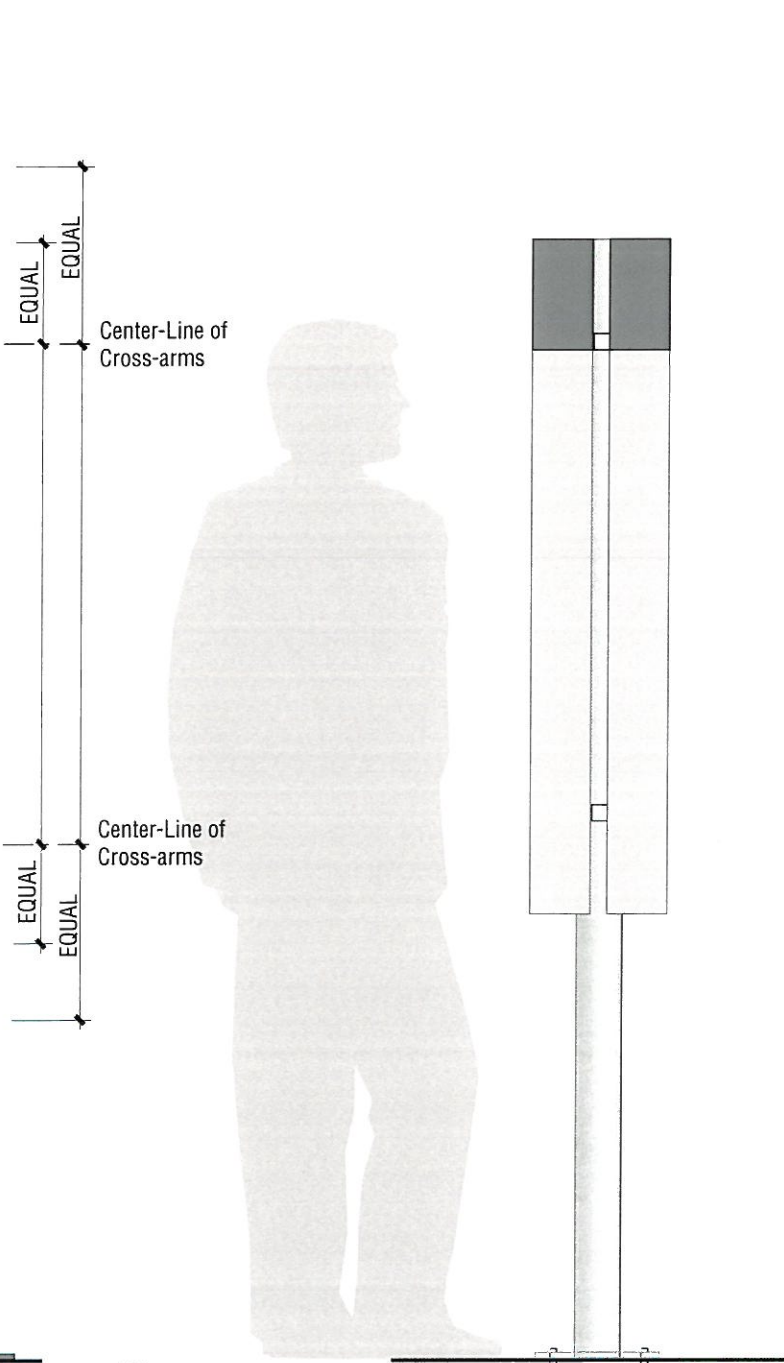


**4** SECTION ELEVATION  
SCALE: 1" = 1' - 0"

sign area:  
22.5 sq. ft.



**1** FACE ELEVATION - Front / Face A  
SCALE: 1" = 1' - 0"



**3** SIDE ELEVATION  
SCALE: 1" = 1' - 0"

TYPICAL FOR:

12.2

12.5

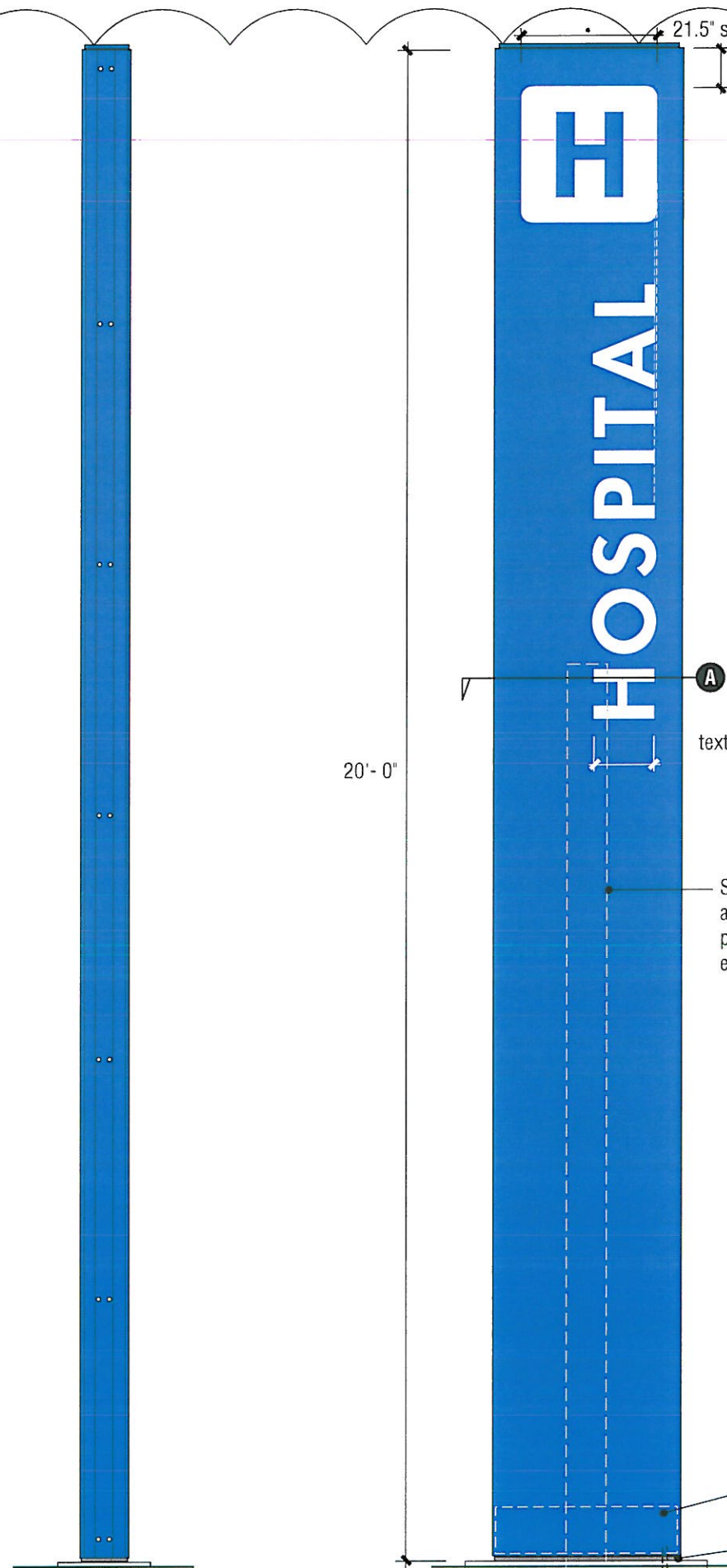
12.7

NON-ILLUMINATED VERSION:

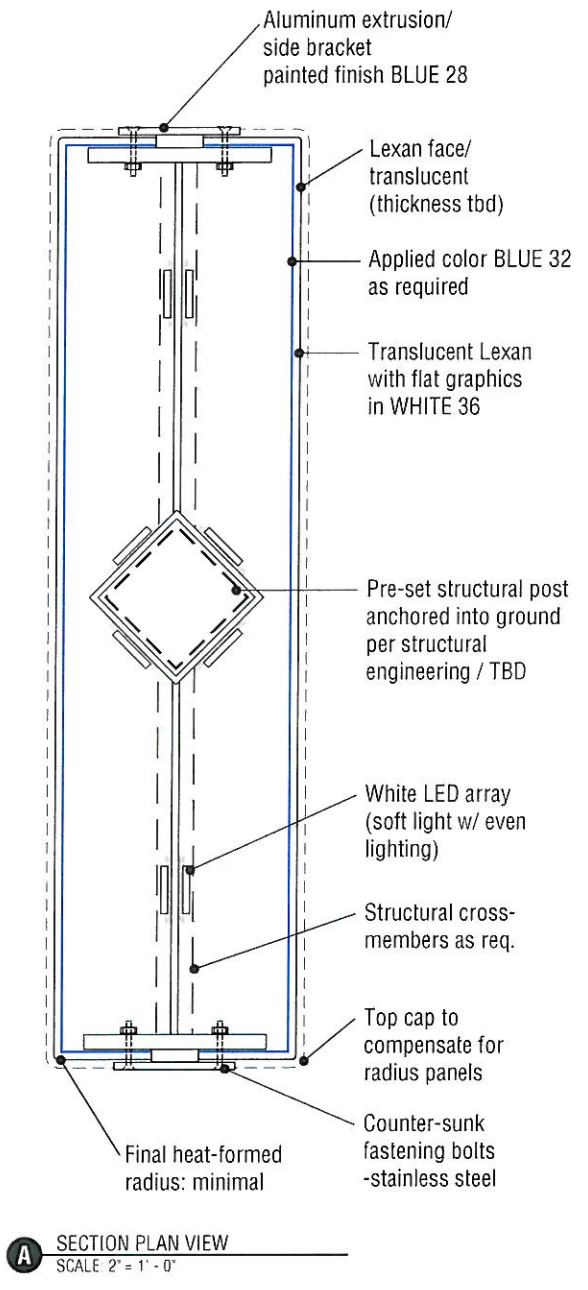
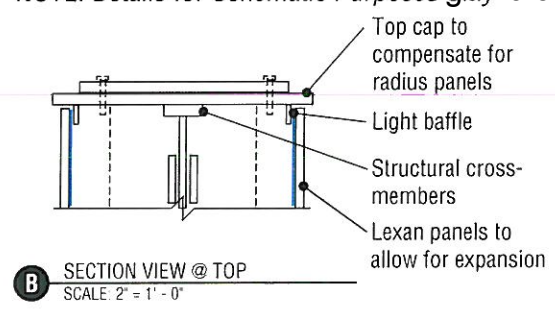
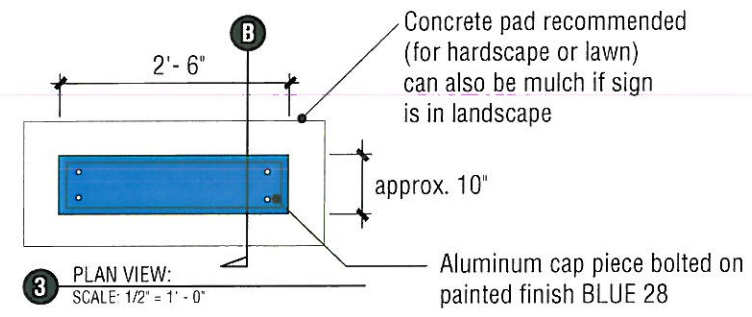
12.1

12.3

NOTE: Details for Schematic Purpose



### TH-15.1i/20 WITHOUT DIRECTIONAL GRAPHICS



2 SIDE ELEVATION  
SCALE: 1/2" = 1' - 0"

TH.1

1 FACE ELEVATION:  
SCALE: 1/2" = 1' - 0"

Accessible chase area at base to conceal power sources minimal height

Stepped-back reveal at base painted finish GREY

NOTE: Raised concrete base recommended

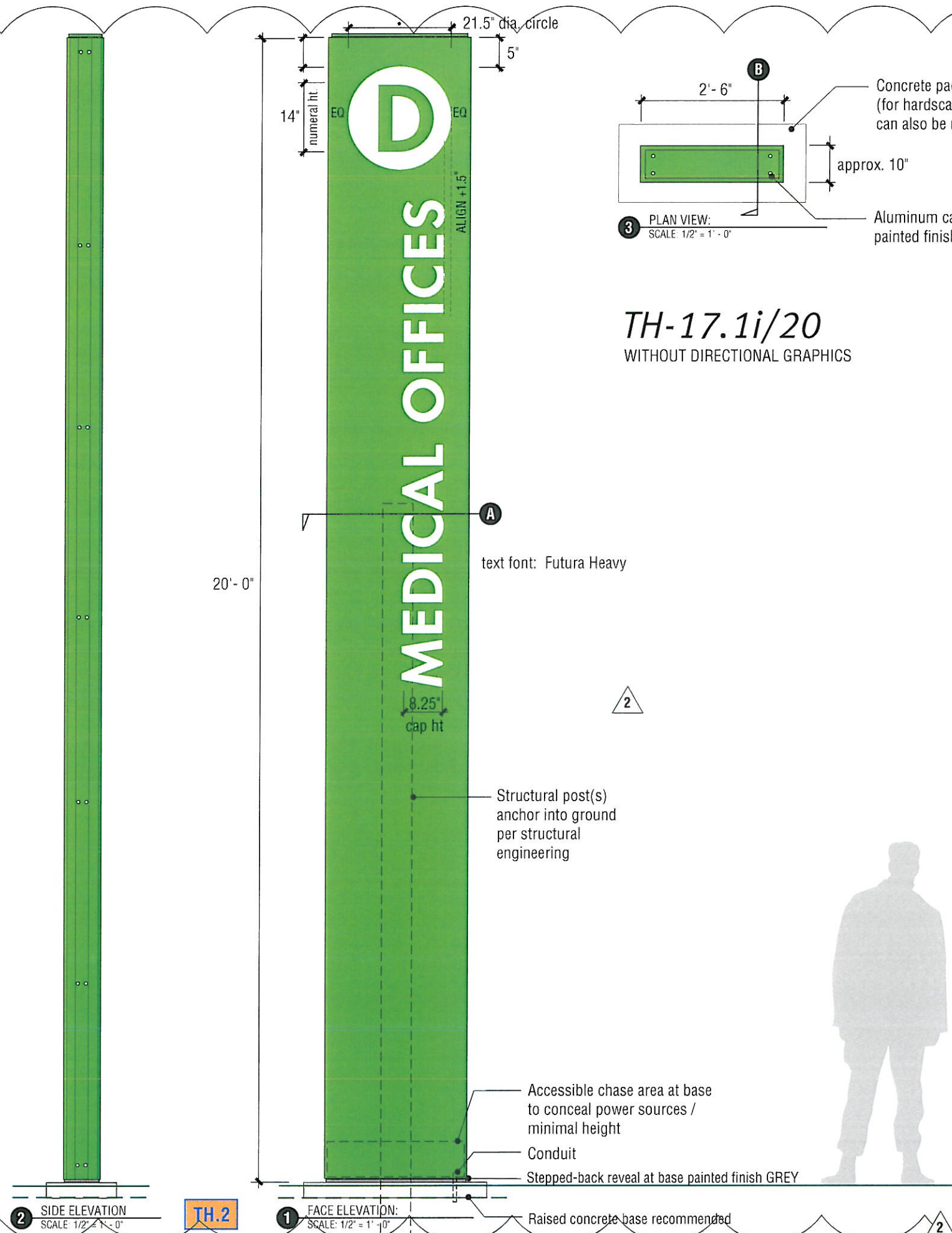
Conduit



KAISER ONTARIO-VINEYARD MEDICAL CENTER  
CAMPUS  
EXTERIOR - SIGN TYPE TH  
2006.046 | 03.01.10

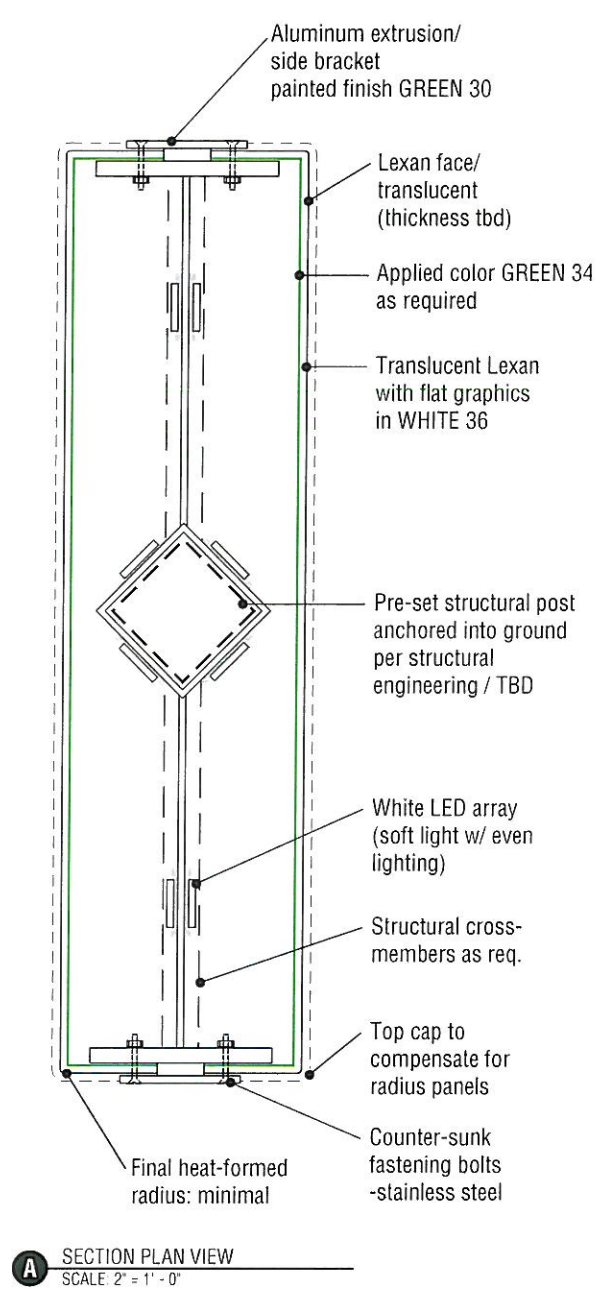
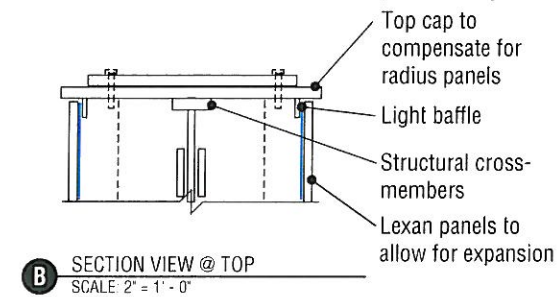
## G-TH.1

NOTE: Details for Schematic Purposes Only



**TH-17.1i/20**  
WITHOUT DIRECTIONAL GRAPHICS

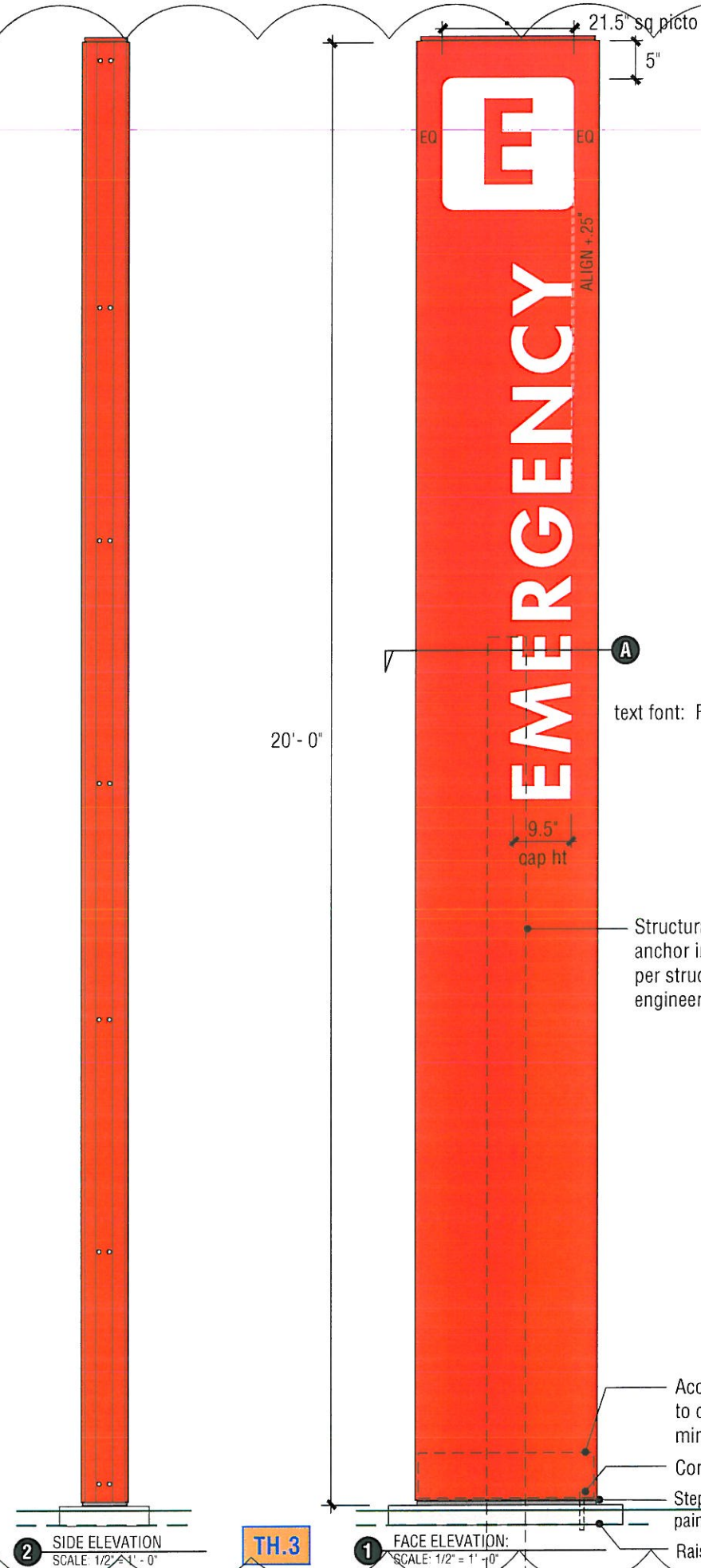
Concrete pad recommended (for hardscape or lawn) can also be mulch if sign is in landscape  
approx. 10"  
Aluminum cap piece bolted on painted finish GREEN 30



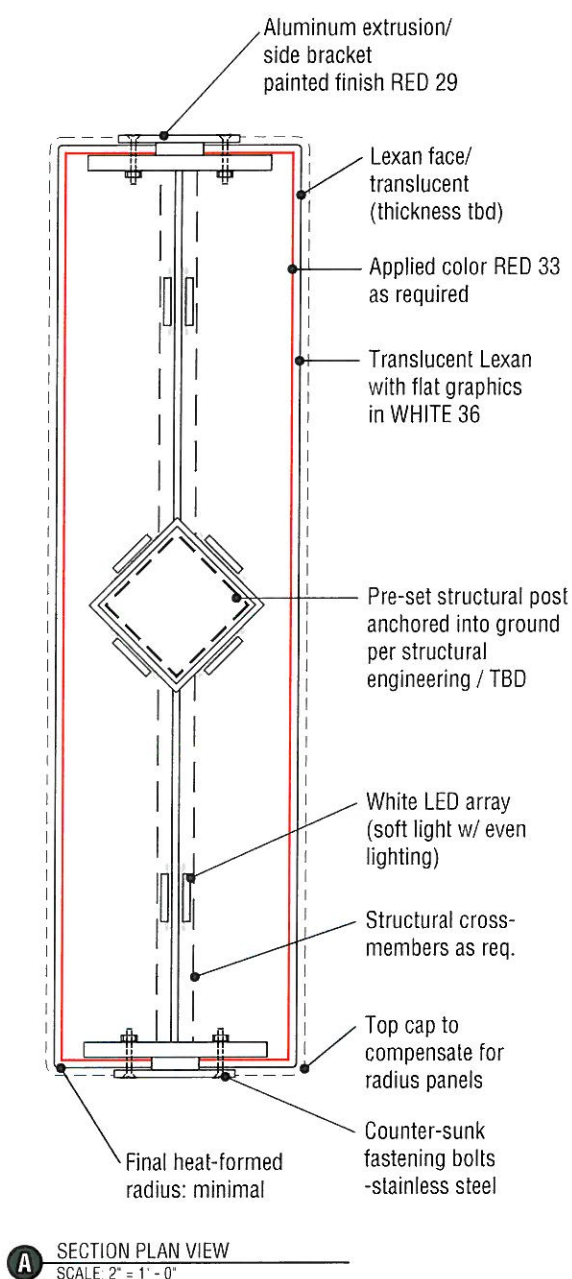
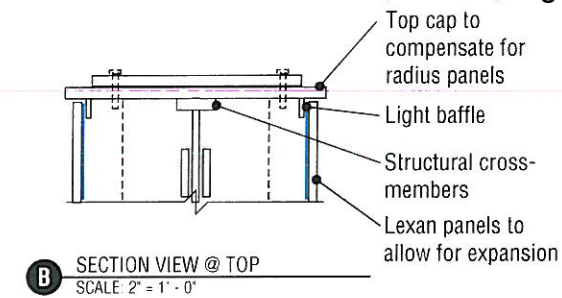
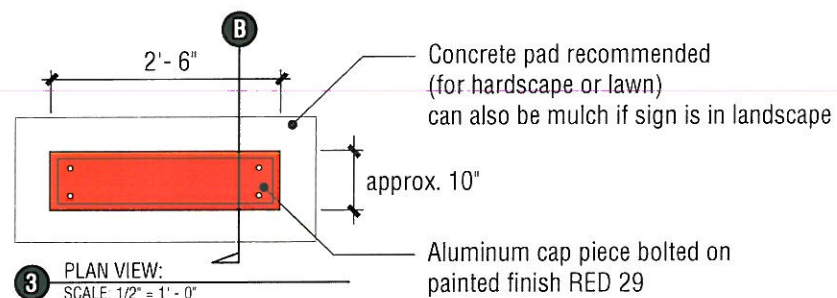
KAISER ONTARIO-VINEYARD MEDICAL CENTER  
CAMPUS  
EXTERIOR - SIGN TYPE TH  
2006.046 | 03.01.10

**G-TH.2**

NOTE: Details for Schematic Purposes Only



**TH-16.1i/20**  
WITHOUT DIRECTIONAL GRAPHICS



2 SIDE ELEVATION  
SCALE: 1/2" = 1' - 0"

TH.3

1 FACE ELEVATION:  
SCALE: 1/2" = 1' - 0"

- Accessible chase area at base to conceal power sources / minimal height
- Conduit
- Stepped-back reveal at base painted finish GREY
- Raised concrete base recommended

2



KAISER ONTARIO-VINEYARD MEDICAL CENTER  
CAMPUS  
EXTERIOR - SIGN TYPE TH  
2006.046 | 03.01.10

**G-TH.3**

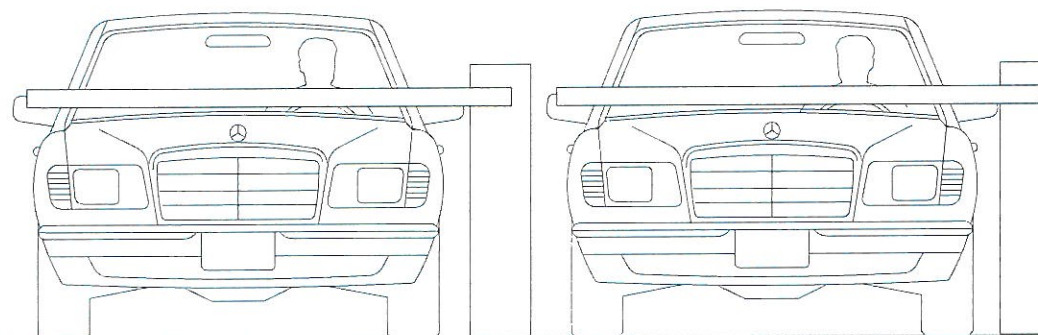
**TH-P2.1** wall is left natural or building color  
surface mounted flat or  
7.5"h x 1/2" thick dimensional letters & 10.5" dia. symbols

**TH-P1.2** surface painted Archway background: ORANGE  
8.125"h x 1/2" thick dimensional letters

1'-8"  
max.  
painted  
area ht.

 **Do Not Enter** 

SEPERATE EXIT PORTAL

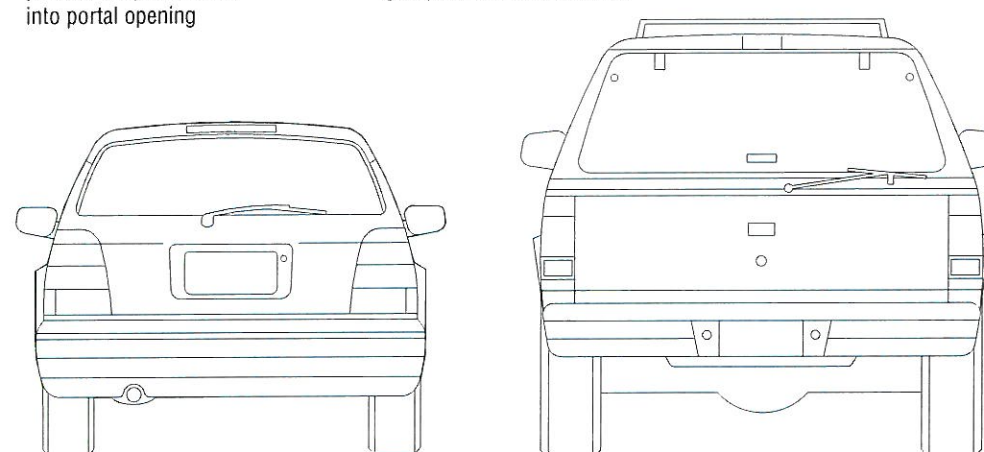


2'-5"  
max.  
painted  
area ht.

welcome

direct painted archway:  
ORANGE 31 (background)  
paint to wrap under and  
into portal opening

SEPERATE ENTRY PORTAL



**2** TYPICAL PARKING STRUCTURE ELEVATION / EXIT PORTAL:  
SCALE: 3/8" = 1' - 0"

TH.4 TH.6

13"

**1** TYPICAL PARKING STRUCTURE ELEVATION / ENTRY PORTAL W/ ARCHWAY:  
SCALE: 3/8" = 1' - 0"

TH.4 TH.5

13"

**SKA**  
DESIGN

KAISER ONTARIO-VINEYARD MEDICAL CENTER  
CAMPUS  
EXTERIOR - SIGN TYPE TH  
2006.046 | 03.01.10

**G-TH.4**