

The COLONIES

MARKETPLACE
CITY OF ONTARIO, CA

SIGN PROGRAM

August 28th, 2008 FINAL

PSGP08-002



PLANNING DEPT APPROVED	
Project No.	PSGP08-002
By	<i>AD Chen</i>
Date	8/28/2008

FILE COPY

The COLONIES MARKETPLACE

DEVELOPER

The Bergman Companies
4300 Edison Avenue
Chino, CA 91710
Tel. 909.627.3651 Fax. 909.627.5425

SIGN CONSULTANT

AD/S
ARCHITECTURAL
DESIGN
Architectural Design & Signs
2950 Palisades Drive,
Carroll, California 92880
Tel. 951.278.0680 Fax. 951.270.2005

ARCHITECT

KKE Architects
525 East Colorado Blvd., 4th Floor
Pasadena, CA 91110
Tel. 626.796.8230 Fax. 626.796.8735

T A B L E O F C O N T E N T S

Objective	Page 1
Sign Size Parameters	2-3
Sign Styles	4
Type Styles & Logos	5
Approval Process	6
Prohibited Signs	7
Fabrication and Installation	8
Site Plan	9
Elevations	10-13
Tenant Monument Sign (TM1)	14
Tenant Monument Sign (TM2)	15
Stop and Handicap Signs	16
Parking Code Entry Signs	17
Window Graphics and Rear Entry Signs	18
Building Address Numbers	19
"Fresh & Easy" Sign Specifications (Bldg. "A")	20-24

O B J E C T I V E

The objective of the following sign criteria is to provide standards and specifications that assure consistent quality, size, variety and placement for Tenant signs throughout this site. This criteria is also intended to stimulate creative invention and achieve the highest standard of excellence in environmental graphic communication. Such excellence is best achieved through open and frequent dialogue between Tenant, Developer, and the project's graphic design consultant. Signing at The Colonies Marketplace, City of Ontario, California is an integral part of the center's image and appeal, so signs must be thoughtfully designed, placed and proportioned to the individual architectural facade on which they are placed. Care in the design and installation of store signs will enhance customer's appreciation.

OVERVIEW

The overview of this criteria is to assist the Developer/Tenant and City relationship.

The Developer will be responsible to:

- a. Provide base building design and construction information requested by Tenant's sign design consultant.
- b. Review, comment and approve Tenant sign submission.

In return, the Tenant will be responsible for:

Design, fabrication, permitting and installation of signs, including any structural support and electrical service and any special installation requiring addition and/or modification to the shell building approved by the Developer.

Maintenance of the Sign.

The Tenant shall employ professional sign fabricators and installers approved by the Developer who are well qualified in the techniques and procedures required to implement the sign design concept. The Tenant will abide by all provisions, guidelines and criteria contained within "The Colonies Marketplace" Sign Criteria.

Only those sign types provided for and specifically approved by the Developer in Tenant's sign submission documents will be allowed. The Developer may, at his discretion and at the Tenant's expense, and after proper notice to Tenant, replace or remove any sign that is installed without Developer's written consent, or that is not executed in conformance with the approved submission. Tenant shall furnish the Developer with a copy of all sign fabrication and installation permits prior to installation.

Note: It will be the responsibility of the Tenant to satisfactorily repair and patch holes at their storefront sign area should the Tenant vacate these premises.





Rounded Pushed Through Copy



Metal Cut Out Panel with Halo Illumination



Cut-out lighting effect for free standing letters



A combination of dual-lit channel letters on halo illuminated background pen panel

Graphic Examples

SIGN SIZE PARAMETERS

(A) Tenant Monument Sign (Exhibit TM1) - West side

Copy to include three (3) Tenants.
The overall size of the monument sign will be 7' - 6" high.

(B) Tenant Monument Sign (Exhibit TM2) - North Side

Copy to include four (4) Tenants
The overall size of the monument sign will be 7' - 6" high

(C1) Major Tenant Signage (Up to 15,000 Sq. Ft.) - Buildings "A" and "B"

- The maximum letter height for buildings "A" and "B" may not exceed four (4'-0") feet in height or 25% of the building's height, whichever is less.
- Tenants with building elevations facing multiple exposures such as a parking lot or street, may incorporate signage on each additional elevation.
- The overall width of any sign shall not exceed 75% of Tenant's leased frontage.
- A maximum of two (2) descriptive signs (e.g. "Pharmacy" & "Photo") as well as directional signs (e.g. "Drive Thru Pharmacy" and "Exit") per front elevation are allowed. Overall sign height shall be limited to 16' unless larger signs are consistent with the building's sign area proportions as determined by Developer and the City Planning Director. Exposed neon will be allowed.
- A Tenant identification sign may also include an icon or logo where necessary to reinforce the Tenant's identification. The icon or logo shall be included in the calculation of the sign area and sign height.
- All signs shall be measured by drawing a rectangular shape around entire sign. See below for example of how the square footage of sign is measured.
Note: Icon or logo to be measured separately from letters / or words of signage.



Letter Height (L) Total Length of Letters / or Word(s)

Example: Square footage rectangular box drawn around whole sign

SIGN SIZE PARAMETERS (Continued)



Halo Illumination



Standard Channel Letters



Front and Halo lit Channel Letters

Graphic Examples

- (C2) Pad Building Tenant Signage - Pad "A"**
- One (1) sq. ft. of sign area per one (1) linear foot of store frontage.
 - Fast Food Restaurants: Total signage shall not exceed one-hundred seventy-five (175) square feet.
 - Four (4) directional signs: Twenty (20) square feet.
 - One (1) menu board sign: Thirty (30) square feet.
 - One (1) monument sign: Fifty (50) square feet
 - Wall Signs: Seventy-Five (75) square feet total.
 - The maximum letter height for Pad "A" may not exceed forty-two (42) inches.
 - The maximum sign area shall not exceed seventy-five (75) square feet.
 - Tenants with building elevations facing multiple exposures such as a parking lot or street, may incorporate signage on three (3) elevations maximum.
 - The overall width of any sign shall not exceed 75% of tenants leased frontage unless otherwise approved by Developer and City of Ontario.
- A Tenant identification sign may also include a icon or logo where necessary to reinforce the Tenant's identification. The icon or logo shall be included in the calculation of the sign area and sign height.
- (C3) Pad Building Multi-Tenant Signage - Building "C"**
- One (1) sq. ft. of sign area per one (1) linear foot of store frontage.
 - The maximum letter height for Building "C" may not exceed thirty-six (36") inches.
 - The maximum sign area shall not exceed fifty (50) square feet.
 - Tenants with building elevations facing multiple exposures such as a parking lot or street, may incorporate signage on two (2) elevations maximum.
 - The overall width of any sign shall not exceed 75% of tenants leased frontage unless otherwise approved by Developer and City of Ontario.
- A Tenant identification sign may also include a icon or logo where necessary to reinforce the Tenant's identification. The icon or logo shall be included in the calculation of the sign area and sign height.



Mixed Media: Halo illuminated channel letters with an aluminum panel and routed copy.



Mixed Media: Halo illuminated dimensional "M" logo w/ perforate aluminum face and open-faced channel letters on decorative ledge.



Mixed Media: Halo letters on wire mesh background and exposed neon accents.

SIGN STYLES

There are many acceptable sign treatments, however a **Mixed Media** * three-dimensional approach combining several different fabrication and lighting techniques is preferred. Tenants are strongly encouraged to consider the specific architectural style of their facade, the overall concept of the project, the scale of the proposed sign and the critical viewing angles and sight lines when designing appropriate graphics and signs for the storefront. Note that specific locations and surrounding architectural treatments can limit the maximum sign height and length, which may differ from the general guidelines proposed above. The Developer reserves the right to approve or reject any proposed sign on the basis of the size and placement.

Acceptable sign styles may include:

It is the intention of this Criteria, subject to review, to permit:

1. Creative use of standard illuminated channel letters.
2. Front and halo illuminated channel letters.
3. Mixed media/dimensional signs using images, icons, logos, etc.
4. Mixed media, 3-dimensional signs painted gold, silver or copper leaf.
5. Halo illuminated letters, 3" deep minimum.
6. Dimensional geometric shapes.
7. Exposed neon if used as an accent, subject to approval by the Landlord.

* **Mixed Media** signs are signs employing two or more illumination and fabrication methods.

For example: Halo lit reverse channel letters with exposed neon accents.

Also, although simple rectangular cabinet signs are not allowed, mixed media signs may be composed of elements, one of which may be a pan panel. However, the pan panel sign should not exceed 50% of the total a sign area.

With the Developer's approval, complex shaped (e.g Polyhedron) sign panels which is part of a national logo, may be used alone if they incorporate dimensional elements such as push-through letters.

TYPE STYLES & LOGOS

The use of logos and distinctive type styles is encouraged for all Tenant signs. Sign lettering may be combined with other graphics and or dimensional elements denoting the type of business. The Tenant may adopt established styles, logos and/or images that are in use on similar buildings operated by the Tenant in California, provided that these images are architecturally compatible and approved by the Developer. The typeface may be arranged in one (1) or two (2) lines of copy and may consist of upper and/or lower case letters. The Tenant should identify trademark protected type and marks in their sign submission to assist the Developer and the City in the review process.

LIGHTING

Tenant signs should be creatively illuminated using a variety of lighting techniques. One or more of the following are allowed:

1. Neon or fluorescent contained in channel letters
2. Light Emitting Diodes (LED's)
3. Fiber Optics
4. Cove Lighting (Indirect Illumination)
5. Exposed neon accents

COLORS

The following guidelines are for selecting colors of Tenant's signing. Signs may incorporate **regionally** and **nationally** recognized logo colors. Sign colors should be selected to provide sufficient contrast against building background colors. Sign colors should be compatible with and complement building background colors. Sign colors should provide variety, sophistication and excitement. Color of letter returns shall be a contrasting color to the face of the letter. Neon accent colors should complement related signing elements. Bright colors such as " Hot Pink " will not be allowed.



APPROVAL PROCESS

The Developer has engaged the services of a SIGN CONSULTANT for the entire project, who will assist in the review and approval of Tenant sign submissions and insure their conformance to the project's overall SIGN CRITERIA. When submitting drawings, applicants must pay a fee of \$300.00 to the Developer for the processing of this design approval service. This fee does not include the additional permit fees required by the City of Ontario.

At least thirty (30) days prior to the Developer's scheduled delivery of the premises, Tenant shall provide the following information to the Developer for review.

Note: This information is separate from sign approval submission and store design and drawing submissions, and will be used to begin the sign design process.

Store Name:

Store Logo (in color with colors identified):

Store interior materials, colors and finishes.

Allowing reasonable time for Developer's review and Tenant's revision of submission in advance of sign fabrication, Tenant shall submit for Developer's approval, three (3) sets of complete and fully dimensioned shop drawings of the Tenant's sign to the Developer's Tenant coordinator.

Shop drawings shall include at least the following: Tenant's entire building facade elevation, showing the proposed sign, in color drawing to scale of 1/4" = 1'-0".

Storefront (partial building) elevation showing the location, size, color, construction and installation details of the Tenant's proposed sign. Typical "section-through" letter and/or sign panel showing the dimensioned projection of the letter or panel face and the illumination method.

Within thirty (30) days of receipt of the sign submission, the Developer will approve, as noted, or disapprove with comments the Tenant's sign design. Tenant must respond to the Developer's comments and re-submit within fourteen calendar days, and repeat this process until all sign design, fabrication and installation issues are resolved to the Developer's satisfaction.

Upon receipt of final sign approval from the Developer, Tenant shall submit three (3) sets of colored drawings of the proposed sign to the City of Ontario, CA for fabrication and installation permits. Tenants are required to provide one (1) set of the city approved drawings to the Developer prior to commencing any installation.



THE FOLLOWING SIGNS AND ELEMENTS ARE PROHIBITED.

1. A sign that consists of only an undadomed rectangular cabinet sign with translucent or opaque faces.
2. Temporary wall signs, pennants, banners, inflatable displays or sandwich boards, unless with specific prior approval from Developer.
3. Signs blocking doors or fire escapes, unless approved by the Developer.
(Note: Box signs hanging in display windows are not allowed).
4. Gold leaf treatments on windows, box signs and exposed neon window displays without Developer's written approval.
Note: Approval is at Developer's discretion. Off the shelf signs are discouraged.
5. Exposed junction boxes, wires, plug in wires on window signs, transformers, lamps, tubing, conduits, raceways or neon crossovers of any type.
6. Signs using trim-cap retainers that do not match the color of the letter and logo returns (polished gold, silver or bronze trim caps are NOT permitted).
7. Pre-manufactured signs, such as franchise signs that have not been modified to meet these criteria.
8. Paper, cardboard, Plexifilm or Styrofoam signs, stickers, or decals hung around or behind storefronts. (Except those required by governmental agencies)
9. Exposed fasteners, unless decorative fasteners are essential to the sign design concept.
10. Simulated materials such as wood grained plastic laminates or wall coverings.
11. Flashing, oscillating, animated lights or other moving sign components.
12. Rooftop signs or signs projecting above roof lines or parapets.
13. Signs on mansard roofs or equipment screens.
14. Advertising or promotional signs on parked vehicles.
15. Sign company decals in full view (limit to one placement only).
16. Painted signs.
17. Portable and A-frame signs.
18. Wind-activated and balloon signs.
19. Outdoor advertising structures (billboards).
20. Article 31, Section 9-1. 3120, "Prohibited Signs"

FABRICATION

The Tenant must insure that his sign fabricator and installer understand their responsibilities before they begin the sign fabrication.

The Tenant's sign contractor is responsible for the following:

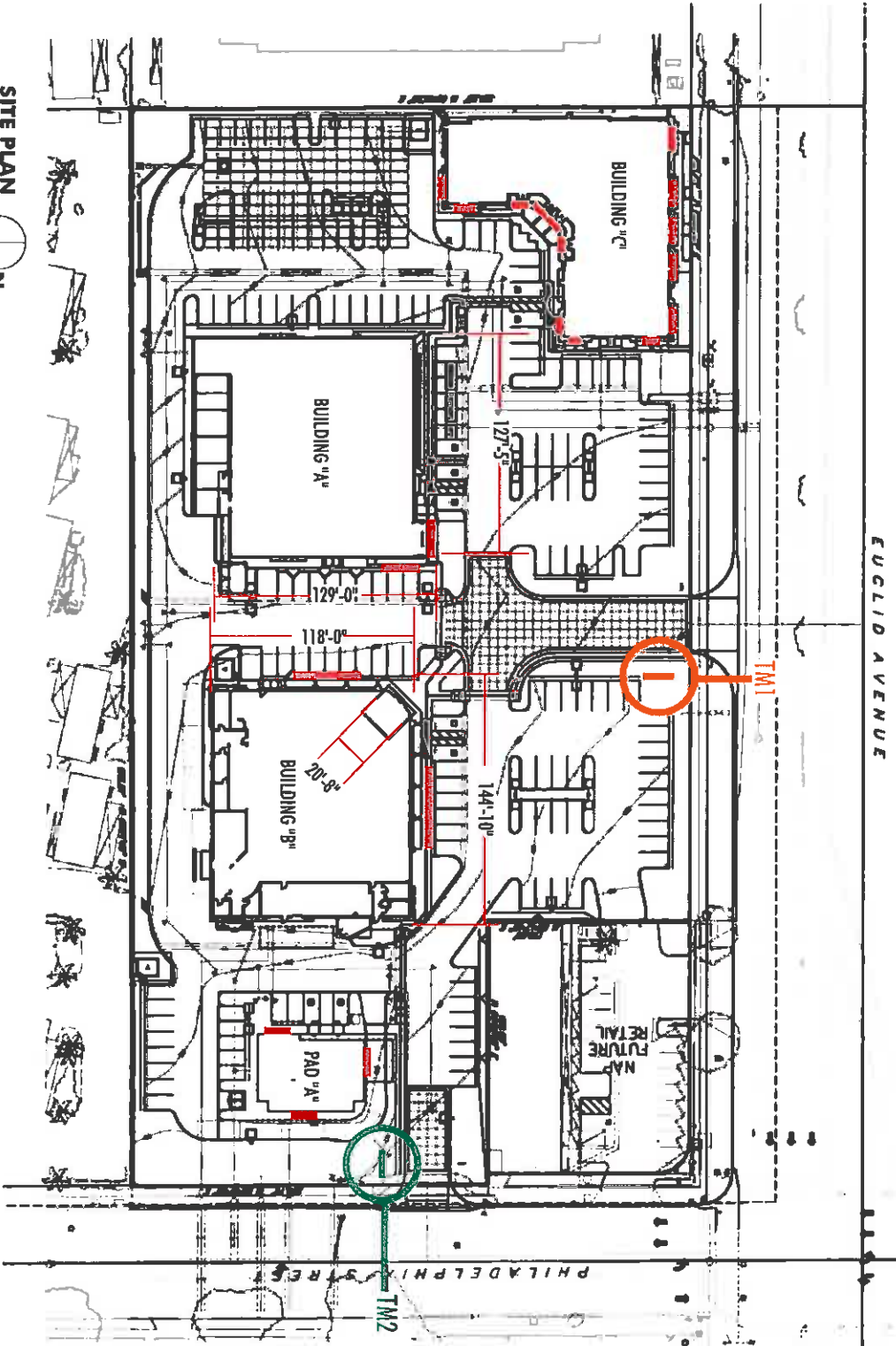
1. Signs must be fabricated of durable appropriate weather resistant materials complementary to the base building materials.
2. Dissimilar metals used in sign fabrication shall be separated with non-conductive gaskets to avoid electrolysis. Additionally stainless steel fasteners shall be used to attach dissimilar metals.
3. Threaded rods or anchor bolts shall be used to mount sign letters which are held off the background panel. Angle clips attached to letter sides will NOT be permitted.
4. Colors, materials, finishes shall exactly match those submitted to and approved by the Developer.
5. Visible welds and seams shall be ground smooth and filled with auto body compound before painting.
6. No fasteners, rivets, screws or other attachment device shall be visible from any public view.
7. Finished metal surfaces shall be free from canning and warping. All sign finishes shall be free of dust, orange peel, drips, runs and shall have a uniform surface conforming to the highest industry standards.
8. Reverse channel letters shall be pinned two (2") inches from the wall. The letter return depth shall be minimum three (3") inches and letters shall have a clear acrylic backing.
9. Double neon tube shall be used where the width of the letter stroke exceeds two and a half (2½") inches.
10. All Signs to be pegged a minimum of a half (½") inch from wall or facade onto which the letters are attached.

INSTALLATION

The Tenant's sign installer will provide the following:

1. Provide the Developer with an original certificate of insurance naming the Developer as an additional insured for liability coverage in an amount required by Developer.
2. Obtain all required sign permits from the City of Ontario, California and deliver copies to the Developer before installing the sign(s).
3. Keep a Developer approved set of sign drawings on site when installing the sign(s).
4. Warrant the sign(s) against all defects in materials and workmanship for a minimum of one (1) year.
5. Roof access shall not be required and is prohibited without having prior Landlord's approval.

SITE PLAN



- █ = WALL SIGNS
- █ = TENANT MONUMENT SIGN (TM1)
- █ = TENANT MONUMENT SIGN (TM2)

All Sign locations shown here were picked at Random. Final locations will be chosen by the Tenant and Landlord, subject to approval based on tenancy and architecture.

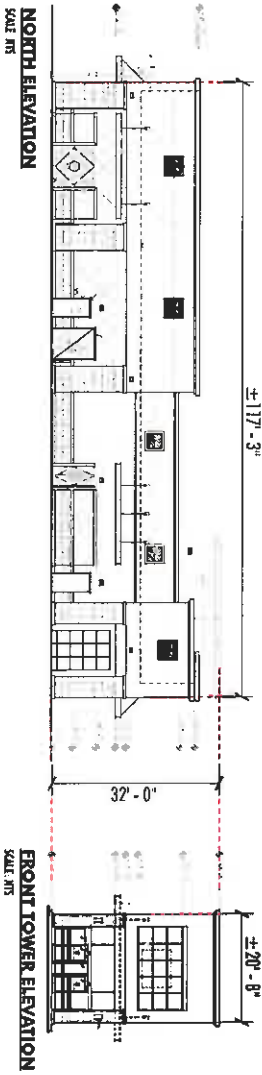
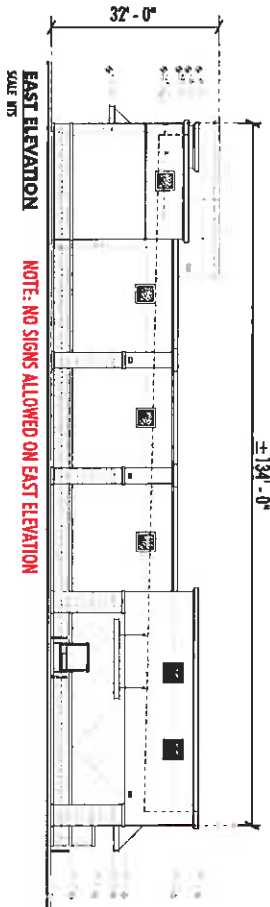
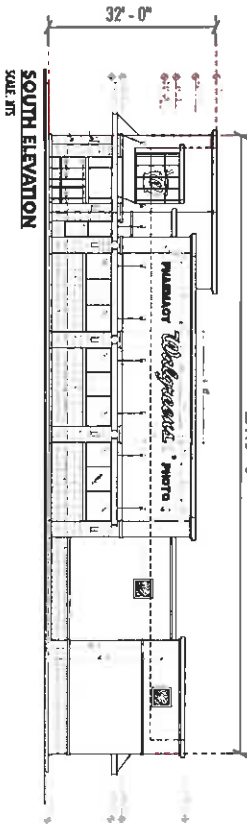
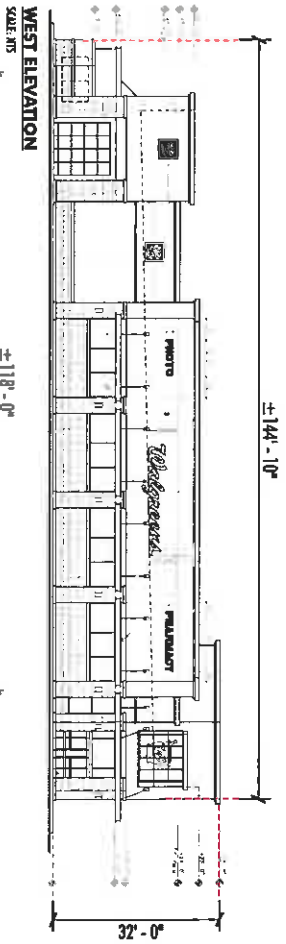
Note for Buildings "C", "B", and Pad "A" - Tenants will be allowed one (1) primary sign per elevations. However, no signs will be allowed on the south elevations.

Note for Buildings "A", "B", and Pad "A" - No signs will be allowed on the east elevations

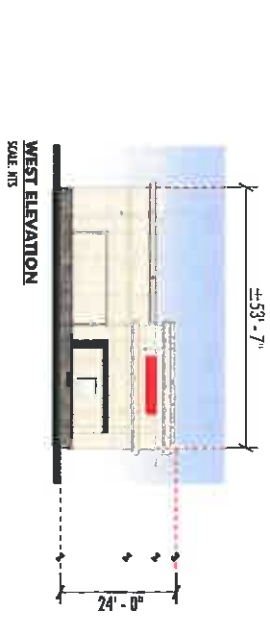
SITE PLAN
SCALE: 1" = 75'-0"



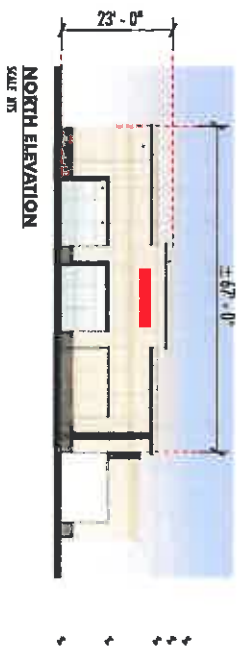
BUILDING "B" ELEVATIONS (WALGREENS)



PAD "A" ELEVATIONS



- MATERIALS**
- 1 STUCCO
 - 2 PLUMBING GLAZING CLEAR ECLIPSE ADVANTAGE
 - 3 MULLION
 - 4 METAL AVENING
 - 5 PARAFET COORNCE
 - 6 SIGNAGE
 - 7 EXIT DOOR
 - 8 VRRAGE GRANITO CERAMCO SLATE
 - SI-01 MILL TCOOL OR 0146, P+12 BR18 12'x24'



- COLORS**
- A IC-1A1844 "MEETING HOUSE"
 - B NOT USED
 - C NOT USED
 - D IC-1944
 - E "TRANSICORP-1"
 - F "SHERWIN WILLIAMS 2006 "MOCKENBROT"
 - G IC-1A1845 "STONINGTON BEIGE"



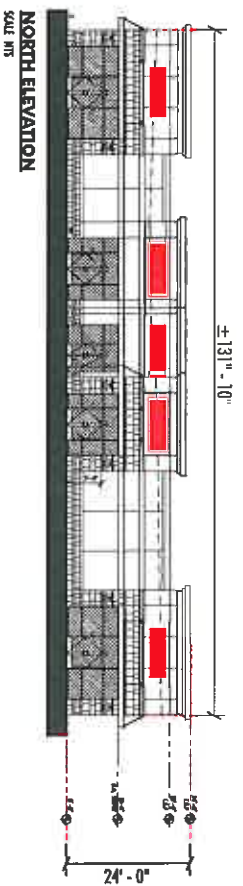
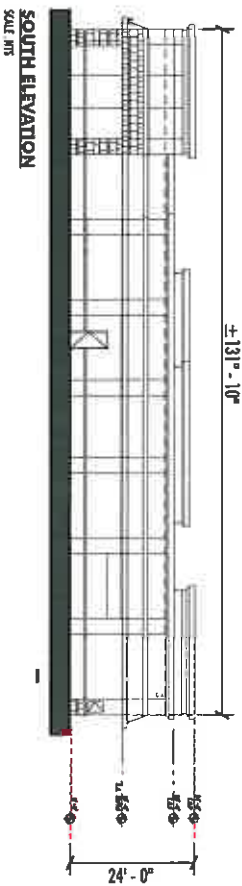
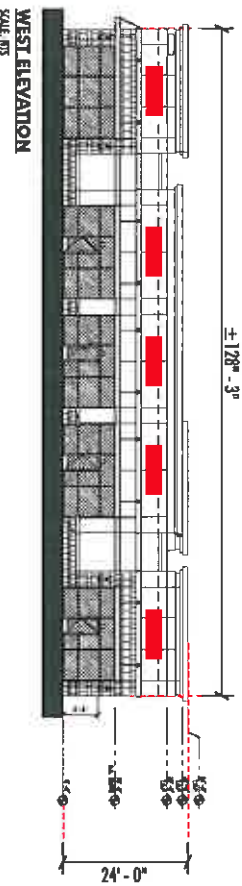
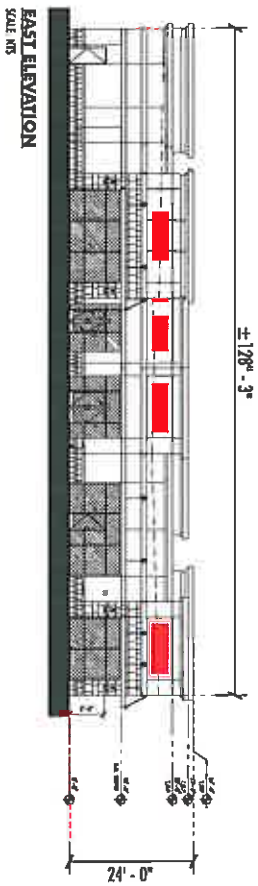
All Sign locations shown here were picked at Random. Final locations will be chosen by the Tenant and Landlord, subject to approval based on tenancy and architecture.

█ = TENANT WALL SIGN LOCATIONS



NOTE: NO SIGNS ALLOWED ON EAST ELEVATION

BUILDING "C" MULTI-TENANT ELEVATIONS



All Sign locations shown here were picked at Random. Final locations will be chosen by the Tenant and Landlord, subject to approval based on tenancy and architecture.

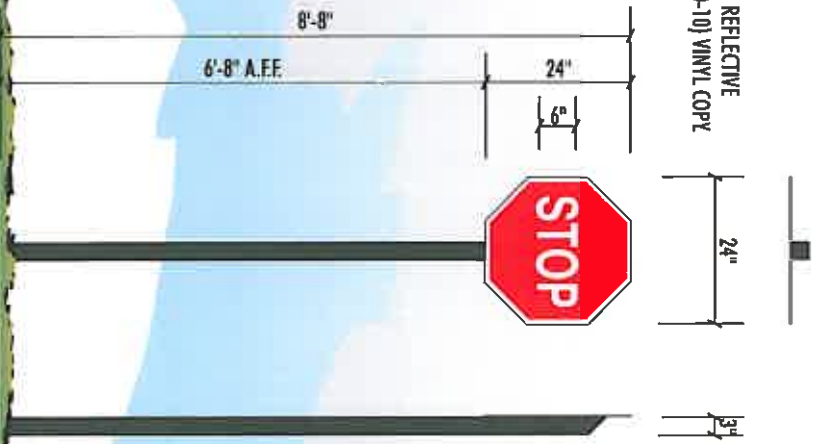
Note for Building "C" - Tenants will be allowed one (1) primary sign per elevations. However, no signs will be allowed on the south elevations.

■ = TENANT WALL SIGN LOCATIONS

STOP AND HANDICAP SIGNS

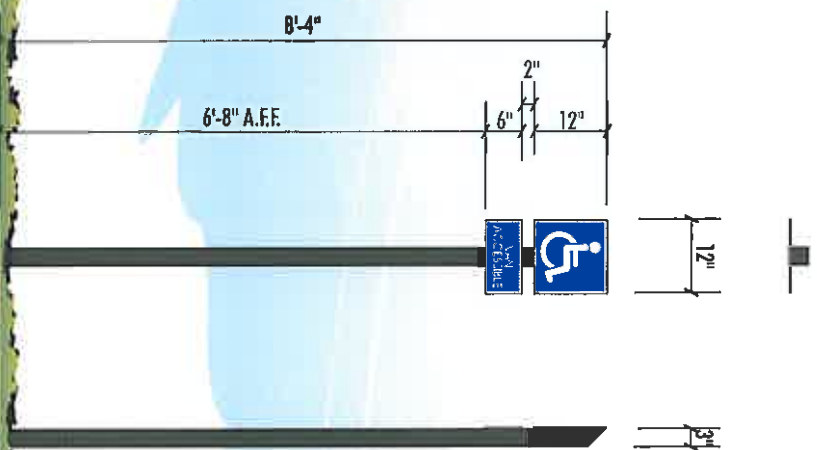
SPECIFICATIONS (STOP SIGN):

- 3' SQ. POST PAINT COLOR TO BE DETERMINED.
- FACE TO BE 1/2" ALUMINUM PAINTED WHITE WITH RED REFLECTIVE (280-72) VINYL OVERLAY AND WHITE REFLECTIVE (280-10) VINYL COPY



SPECIFICATIONS (HANDICAP):

- 3' SQ. POST PAINT COLOR TO BE DETERMINED.
- FACE TO BE 1/2" ALUMINUM PAINTED WHITE WITH LIGHT BLUE REFLECTIVE (280-76) VINYL BACKGROUND WITH WHITE REFLECTIVE (280-10) VINYL COPY/GRAPHIC & BORDER.

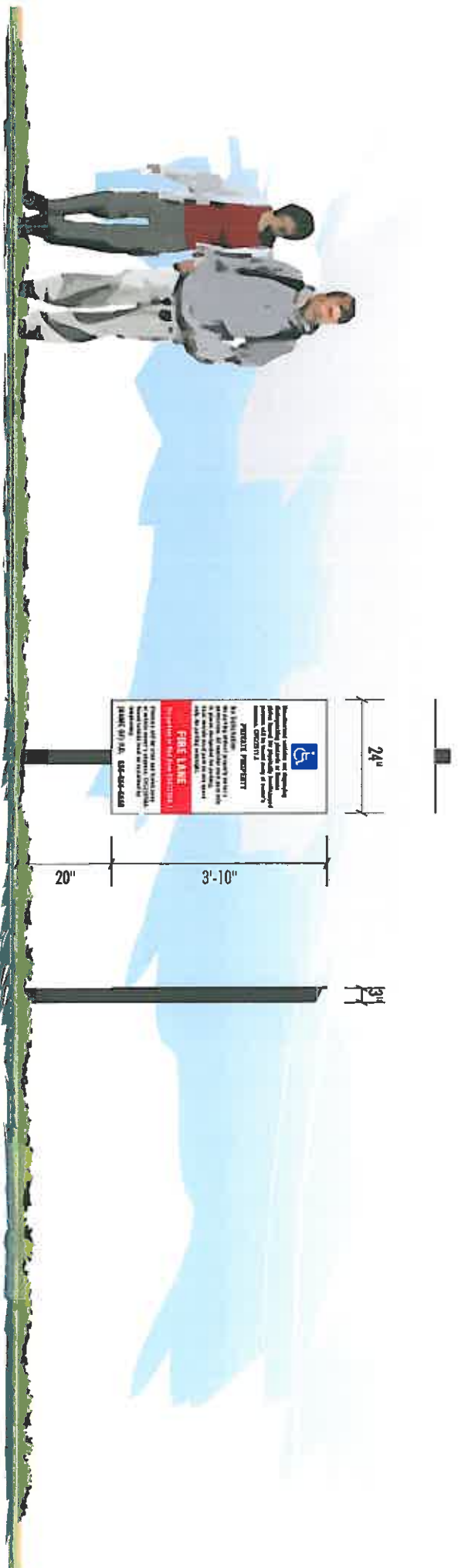


SCALE: 1/2" = 1'-0"

PARKING CODE ENTRY SIGNS

SPECIFICATIONS:

- 3rd SQ. POST PAINT COLOR TO BE DETERMINED.
- FACE TO BE 1/2" ALUMINUM PAINTED WHITE.
- COPY TO BE BLACK (220-12) VINYL.
- "HANDICAP" LOGO TO BE REFLECTIVE LIGHT BLUE (280-76) WITH WHITE SHOW THRU.
- "FIRE LANE" TO BE REFLECTIVE RED (280-72) VINYL WITH WHITE SHOW THRU COPY.

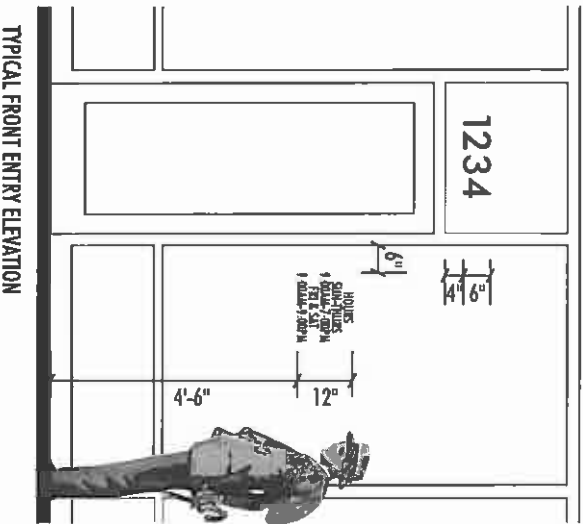


SCALE: 1/2" = 1'-0"

WINDOW GRAPHICS AND REAR ENTRY SIGNS

SPECIFICATIONS:

- 6" HIGH WHITE VINYL NUMBERS/LETTERS ON ENTRY GLASS ABOVE DOOR.
- STORE HOURS TO BE WHITE VINYL ON WINDOW NEXT TO DOOR.
- ALL VINYL TO BE APPLIED SECOND SURFACE.
- 2.5 SQ. FT. MAXIMUM SIGN AREA.



TYPICAL FRONT ENTRY ELEVATION

SCALE: 3/8" = 1'-0"

SPECIFICATIONS:

- 4" AND 2" HIGH VINYL NUMBERS/LETTERS ON REAR ENTRY DOOR.
- COLOR TO BE IN CONTRASTING COLOR TO DOOR.
- 2.5 SQ. FT. MAXIMUM SIGN AREA.

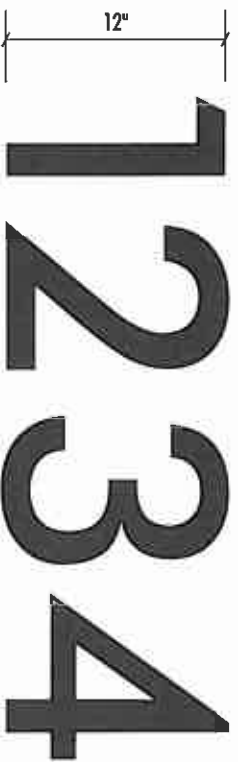


TYPICAL REAR ENTRY ELEVATION

BUILDING ADDRESS NUMBERS

SPECIFICATIONS:

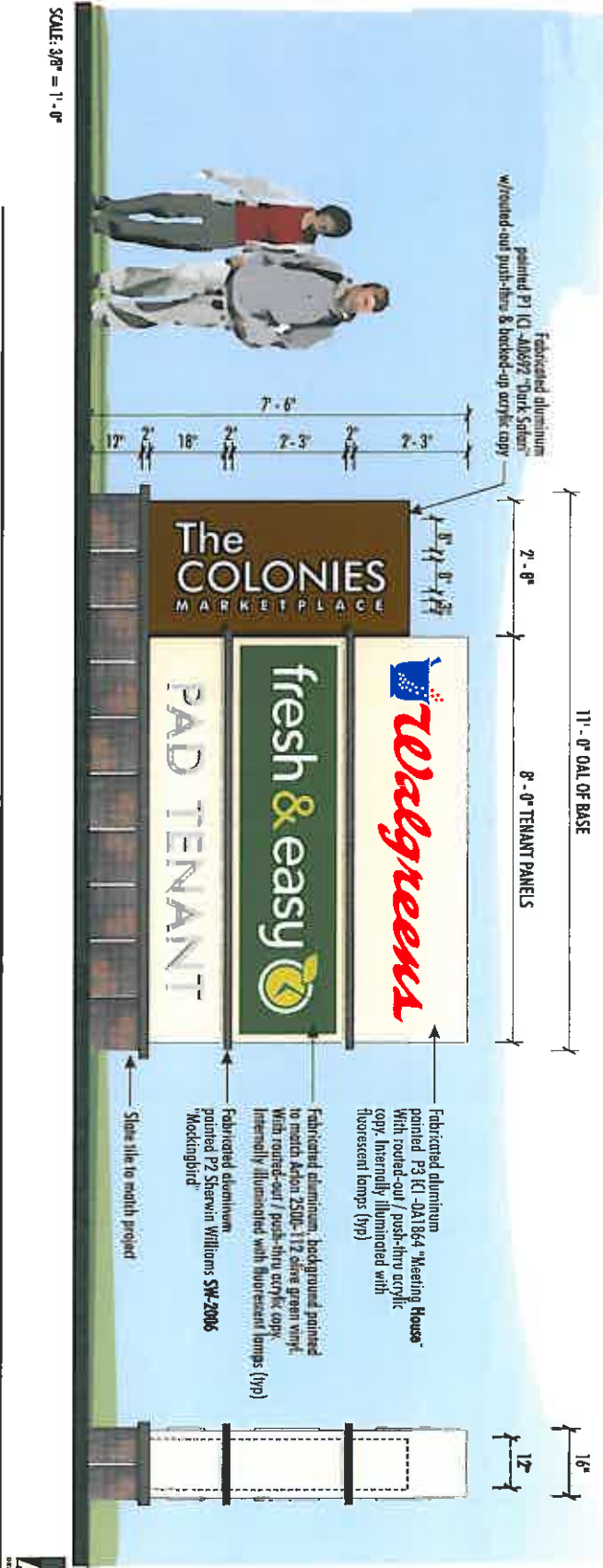
- 1/2" THICK SINTRA NUMBERS;
- PAINT COLOR TO MATCH PROJECT (CONTRASTING TO BUILDING FASCIA COLOR);
- NUMBERS TO BE STUD MOUNTED TO BUILDING FASCIA.



MONUMENT SIGN (TM1)

COLOR PALETTE

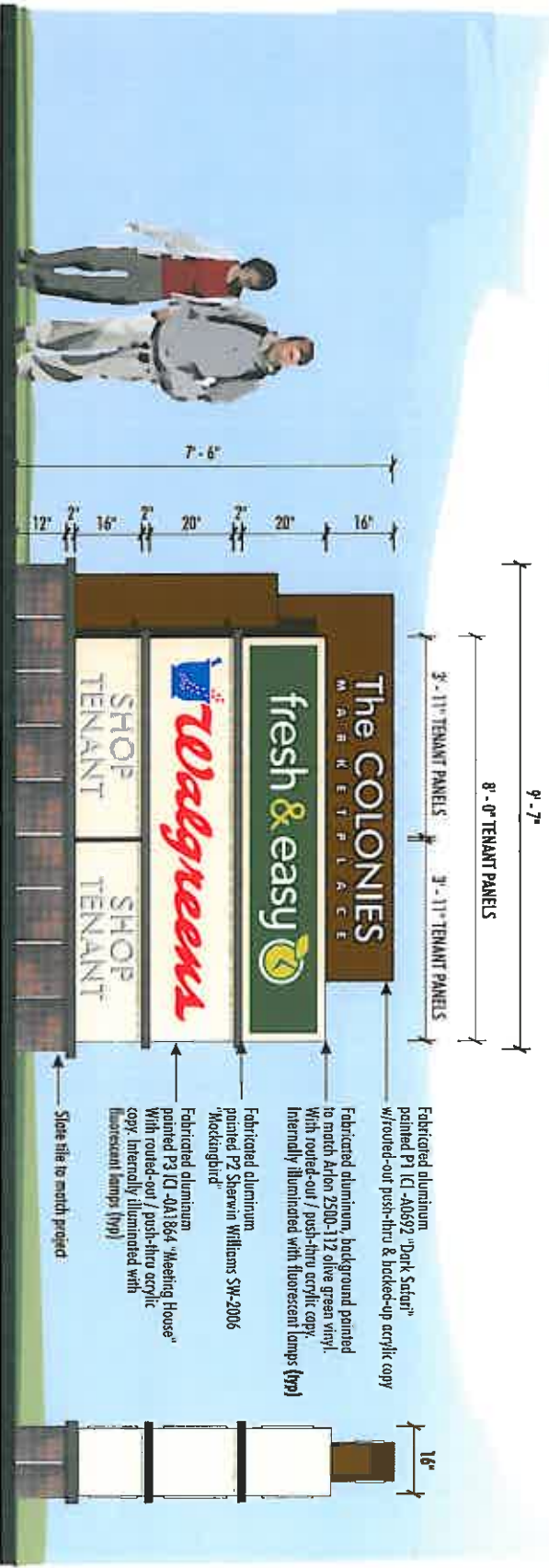
1	ICI - 44597 "Dark Slate"
2	Sherwin Williams SW-2005 "Mockingbird"
3	ICI - 0A1864 "Mocking House"



SCALE: 3/8" = 1'-0"

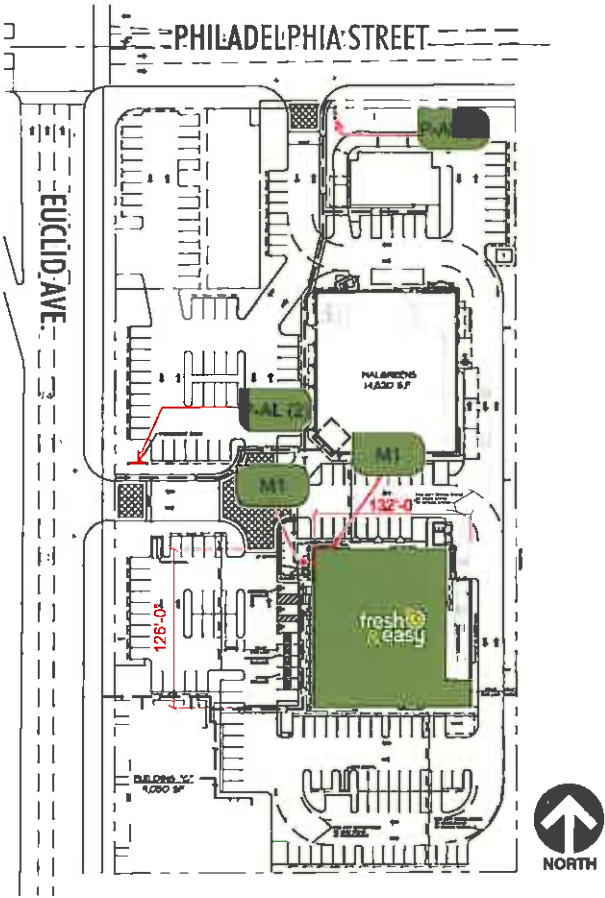
MONUMENT SIGN (TM2)

COLOR PALETTE	
P1	IC - A0692 "Dark Safari"
P2	Shawin Williams SW-2006 "Meckengard"
P3	IC - A01864 "Meeting House"

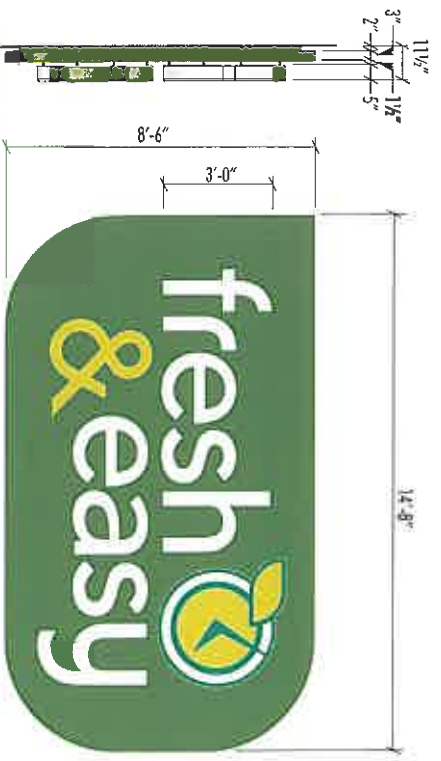


SCALE: 3/8" = 1'-0"

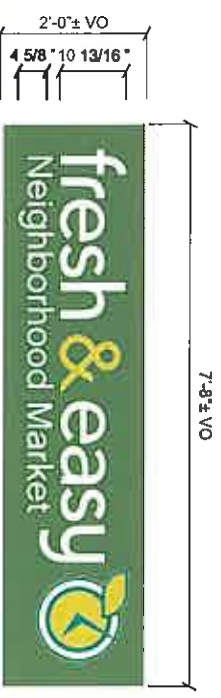
"FRESH & EASY" SIGN PROGRAM



P-ALL (1)
(2) REQD-
TENANT PANEL DETAIL
SCALE: 3/4" = 1'-0"
10.2 SQ. FT

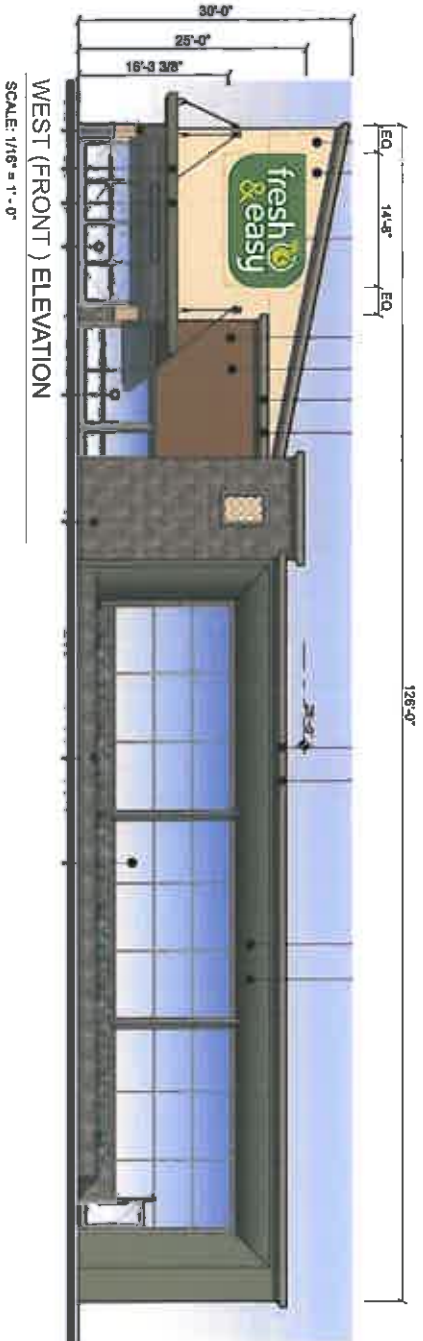


M1
(1) REQD-
MAIN I.D. TYPICAL STANDARD SIZE M1
SCALE: 1/4" = 1'-0"
124.7 SQ. FT



P-ALL (1)
(2) REQD-
TENANT PANEL DETAIL
SCALE: 1/2" = 1'-0"
15.3 SQ. FT

"FRESH & EASY" SIGN PROGRAM



WEST (FRONT) ELEVATION
SCALE: 1/8" = 1'-0"



(1) REQ'D-
MAIN I.D. TYPICAL STANDARD SIZE M1
SCALE: 1/4" = 1'-0"

- LETTERS 'FRESH EAST' -**
 FACES - 3/16" WHITE ACRYLIC
 TRIMCAP - 1" WHITE
 RETURN - 040 ALUM. PAINTED
 BACKS - 177 CLEAR POLYCARBONATE
 W/ 2ND SURFACE GREEN
 CAST VINYL (3430-26)
 ILLUMINATION - WHITE GEL
 ULTRA LEDS
- LETTER 'E' -**
 FACES - 3/16" WHITE ACRYLIC
 W/ APPLIED CAST
 LINE VINYL (VT13474)
 TRIMCAP - 1" GREEN PAINTED
 PMS 7496
 RETURN - 040 ALUM. PAINTED
 PMS 7496
 BACKS - 177 CLEAR POLYCARBONATE
 ILLUMINATION - WHITE GEL
 ULTRA LEDS
- CLOCK LOGO -**
 FACES - 1 1/2" FOAMED WHITE ACRYLIC W/APPLIED LINE GREEN CAST
 VINYL (VT13474) AND VINYL GREEN CAST VINYL (3430-150)
 (OUTER LINE DARK)
 ALL CORNERS - INNER RING & LEAF BORDER HAS BLACK VINYL
 (1" SIZES) UNDER VINYL GREEN VINYL
 TRIMCAP - 1" GREEN PAINTED PMS 7496
 RETURN - 040 ALUMINUM PAINTED PMS 7496
 BACKS - 177 CLEAR POLYCARBONATE W/ 2ND SURF. GREEN CAST VINYL (3430-26)
 ILLUMINATION - WHITE GEL AND ULTRA LEDS
- BACKGROUND PANEL -**
 PANEL FACE - 175 ALUMINUM PAINTED PMS 7496 MATTE FINISH
 PANEL RETURN - 090 ALUMINUM PAINTED PMS 7496
 ILLUMINATION - GREEN EXCEL LED SYSTEM HARD AROUND PERIMETER
 HIDDEN IN FABRICATED CHANNEL W/ 177 CLEAR
 LEXAN COVER

124.7 SQ FT



"FRESH & EASY" SIGN PROGRAM



EAST ELEVATION

SCALE: 1/16" = 1'-0"



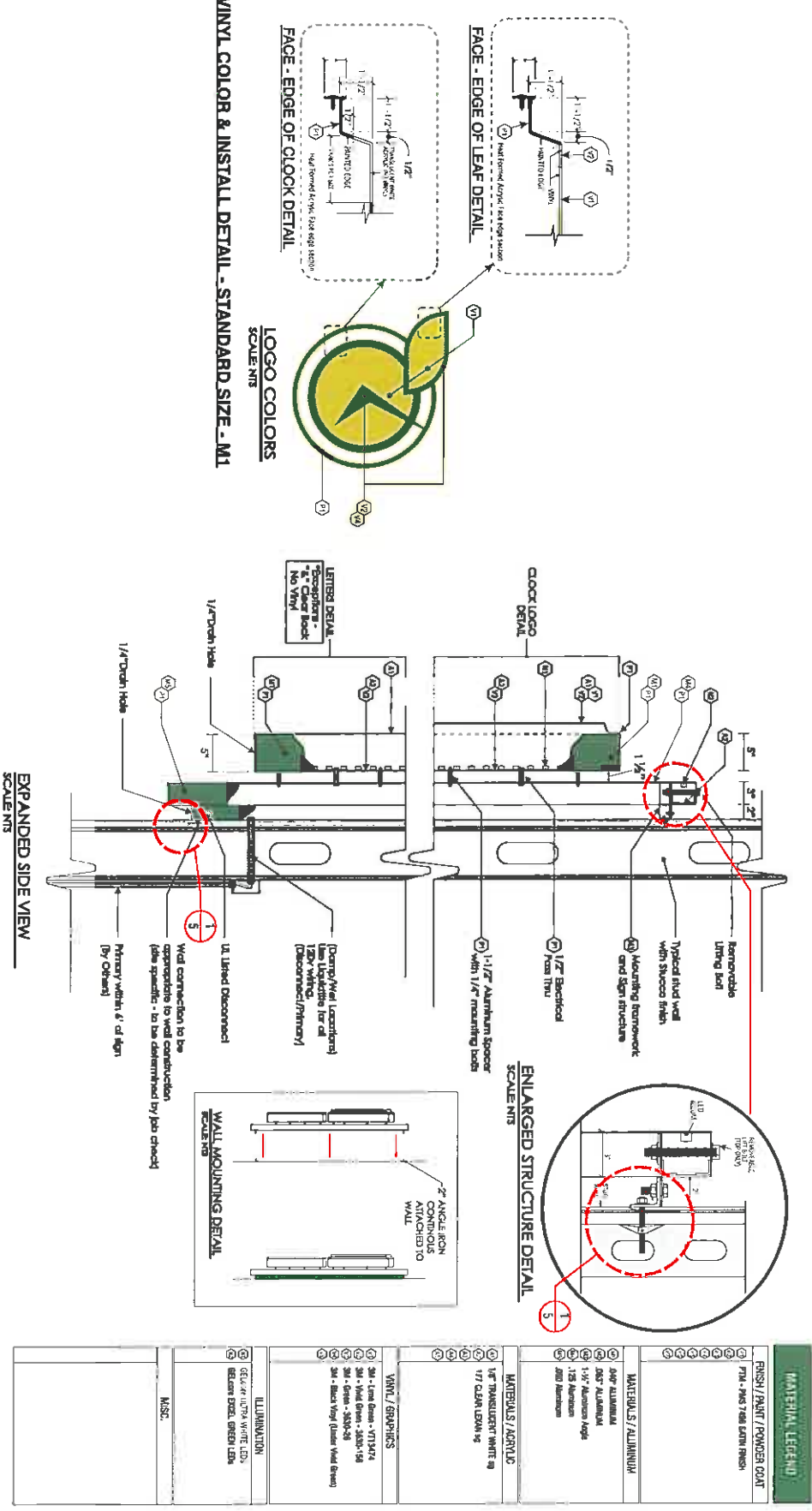
**(1) REQ'D-
MAIN I.D. TYPICAL STANDARD SIZE M1**

SCALE: 1/4" = 1'-0"

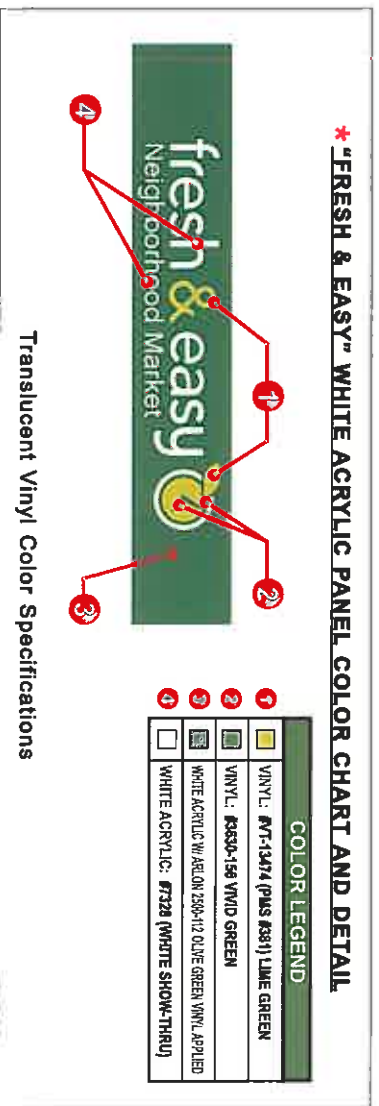
124.7 SQ FT

- LETTERS FRESH EAST -**
- FACES - 3/2" WHITE ACRYLIC
- TRUCKS - 1" WHITE
- RETURNERS - .040 ALUM. PAINTED WHITE
- BACKS - 1/27 CLEAR POLYCARBONATE W/ 2ND SURFACE GREEN CAST VINYL (3430-26)
- ILLUMINATION - WHITE GELCON ULTRA LEDS
- LETTER 'E' -**
- FACES - 3/2" WHITE ACRYLIC W/ APPLIED CAST LINE VINYL (V113474)
- TRUCKS - 1" GREEN PAINTED PMS 7496
- RETURNERS - .040 ALUM. PAINTED PMS 7496
- BACKS - 1/27 CLEAR POLYCARBONATE W/ 2ND SURFACE GREEN CAST VINYL (3430-26)
- ILLUMINATION - WHITE GELCON ULTRA LEDS
- CLOCK LOGO -**
- FACES - 1/2" FORMED WHITE ACRYLIC W/APPLIED LINE GREEN CAST VINYL (V113474) AND VIVID GREEN CAST VINYL (3430-158) (OUTER LINE DARK)
- ALL CLOCK HANDS, INNER RING & LEAF BORDER HAS BLACK VINYL (1/3 SURFACE) UNDER VIVID GREEN VINYL
- TRUCKS - 1" GREEN PAINTED PMS 7496
- RETURNERS - .040 ALUMINIUM PAINTED PMS 7496
- BACKS - 1/27 CLEAR POLYCARBONATE W/ 2ND SURFACE GREEN CAST VINYL (3430-26)
- ILLUMINATION - WHITE GELCON ULTRA LEDS
- BACKGROUND PANEL -**
- PANEL FACE - 1/25 ALUMINIUM PAINTED PMS 7496 MATTE FINISH
- PANEL RETURNERS - .090 ALUMINIUM PAINTED PMS 7496
- ILLUMINATION - GREEN EXCEL LED SYSTEM HALO AROUND PERIMETER HIDDEN IN FABRICATED CHANNEL W/ 1/27 CLEAR LEXAN COVER

"FRESH & EASY" SIGN PROGRAM



"FRESH & EASY" SIGN PROGRAM



SCOPE OF WORK:
MANUFACTURE & INSTALL (2) TWO CUSTOM ALUMINUM PYLON PANELS. FLAT ALUMINUM PANEL W/ ROUTED OUT W/ PUSH-THRU ACRYLIC LETTERS. SECOND SURFACE DIFFUSER. FIRST SURFACE VINYL GRAPHICS APPLIED TO ACRYLIC.

*** COLORS AS PER:**
"FRESH & EASY" ROUTED OUT ALUMINUM COLOR CHART AND DETAIL