

SIGN CRITERIA
for
**ACACIA - GROVE
BUSINESS PARK**
1351 - 1435 SOUTH GROVE
1215, 1255, 1295, 1375 E. ACACIA
ONTARIO

Prepared by

Sign-Wize

282 N. PARK AVE POMONA, CA 91768
909-620-8988 Fax: 620-5491
E-MAIL: SIGN.WIZE@VERIZON.NET

The Art of Visual Communication

SIGN CRITERIA
for
**ACACIA - GROVE
BUSINESS PARK**
1351 - 1435 SOUTH GROVE
1215, 1255, 1295, 1375 E. ACACIA
ONTARIO

Prepared by

Sign-Wize

282 N. PARK AVE POMONA, CA 91768
909-620-8988 Fax: 620-5491
E-MAIL: SIGN.WIZE@VERIZON.NET

The Art of Visual Communication

ACACIA GROVE BUSINESS PARK

1351 – 1435 SOUTH GROVE, ONTARIO.

1215, 1255, 1295, 1375 E. ACACIA, ONTARIO

SUBMISSION FOR SIGNAGE APPROVAL

Prior to fabrication of any sign, each tenant shall submit for sign approval to the owner's design consultant or agent:-

(3) copies of a detailed sign plan minimum size 8/50" x 11" prepared by a professional sign company.

Agent/Owner: Eric Homme
Owens Development, LLC
2522 Chambers Road,
Tustin, CA.92780.

GENERAL SIGN REQUIREMENTS.

1. All permits for signs and their installation shall be obtained by the Tenant or his representative. The tenant shall be responsible for submitting his approved sign drawing with owner's approval to the city of Ontario for necessary permits.
2. Tenant shall be responsible for the fulfillment of all requirements and specifications.
3. All signs shall be constructed and installed at Tenant's expense.

REQUIRED SIGNS:

In the interest of safety all permanent structures in the City shall display street address numerals of a size and location which are clearly visible from a public right of way, unless otherwise authorized in writing by the Police and Fire Departments.

Door Signs: Stores may also have white vinyl letters adjacent to door with store name, hours, security phone numbers, copy not to exceed 100 square inches.

PROHIBITED SIGNS:

- A. Balloon, inflated signs, kites and any other type of aerial sign unless approved

as part of a temporary display pursuant to Sec. 9-1.3130

- B. Flashing, blinking, rotating or otherwise animated signs, except barber poles, time/temperature signs and theater marquee signs.
- C. Signs on or affixed to trucks, automobiles, trailers or other vehicles which advertise, identify or provide direction to a use or activity not related to its lawful making of deliveries of sales or merchandise or rendering of services from such vehicles, is prohibited.
- E. Signs that emit or generate, sound, smoke or similar material.

SHEET A:

BUILDINGS facing Grove Avenue, with black glass sign bands and Building #1215 Acacia Street, Units 102 – 104.

GENERAL SPECIFICATIONS.

Allowed Signage:

- 1 sign per elevation only on designated glass sign band
- Dimensional letters cut from 1.50” Gator foam finished contrasting color to background. Color to be white only. Logo colors to be approved by landlord and city.
- Max letter Height 18” Min. 6” Logos 22.5” High
- 1 line only with registered name and logo.
- Max size 75% of height & weidth of glass sign panel
- Typestyle “Ariel Bold”, Reg or Italic
- Established Business Type styles & logos allowed with owner’s approval.
- Ultimate sign height and width must be architecturally compatible with the building frontages on which they are installed.

SHEET B:-

BUILDINGS NUMBERED 1215, 1255, 1295 and 1375 facing Acacia Avenue.

Allowed Signage:

- 1 sign per street elevation over entrance windows
- 2” thick “Ultra” sign foam with painted faces & returns
- Max letter Height 24” Min. 8”
- 2-lines Max Business name, reg. logo.
- Max size 75% of height & width of clear sign area (see below)
- Ultimate sign height and width must be architecturally compatible with the building frontages on which they are installed.

Typestyle "Ariel Bold", Reg. or Italic or:-

Established Business Type styles & logos allowed with owner's approval

Colors to be black, tomato red (PMS 032) or reflex blue.

Sign copy shall contain legally registered name only. No other services or product advertising will be allowed

In addition to the signs described above, each Tenant shall be permitted to place

White vinyl letter (Exhibit "A") to provide store name and hours. The total area for this sign shall not exceed 100 square inches. Additionally, restaurants may display menu on door.

Promotional or special event signs, banners and flags shall be in conformance with The City's Sign Ordinance and must be approved by Landlord prior to submission to the City.

10. Window Displays: shall not exceed a maximum of fifteen percent of the total window area on the frontage on which such sign is located.
11. An additional five percent of window display is permitted for the notification of cultural, social, community events or announcements.

June 2007.

Sheet A 1

Building No. 1215 Acacia St. Units 101 - 104 With black glass sign bands

20ft Varies with suite



ALLOWED SIGNAGE

Dimensional letters CNC cut from 1.5" Gatorfoam

Max letter Height 18" Min. 8" Logos 22.5"High

Copy colors to be White Logo colors to be approved by landlord & city.

Max size 75% of height & width of glass sign panel

Typestyle "Aerial Bold, Reg. or Italic

Established Business Type styles & logos allowed with owners approval.



WEST ELEVATION

Sheet A

Buildings facing Grove Ave. With black glass sign bands

17ft. Varies with suite



ALLOWED SIGNAGE

Dimensional letters CNC cut from 1.5" Gatorfoam

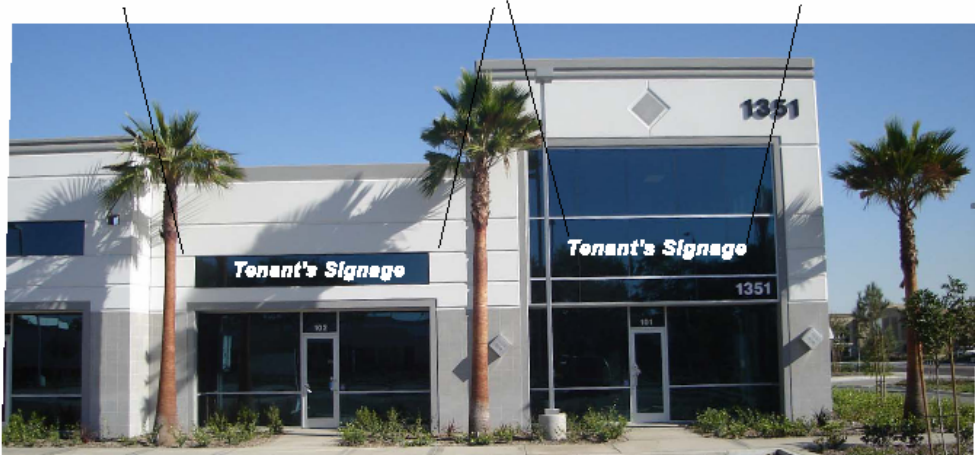
Max letter Height 18" Min. 6" Logos 22.5" High

Copy colors to be White Logo colors to be approved by landlord & city.

Max size 75% of height & width of glass sign panel

Typestyle "Aerial Bold, Reg. or Italic

Established Business Type styles & logos allowed with owners approval.



Sheet B

Tenants Signage

Buildings facing Acacia Ave. With tilt-up walls

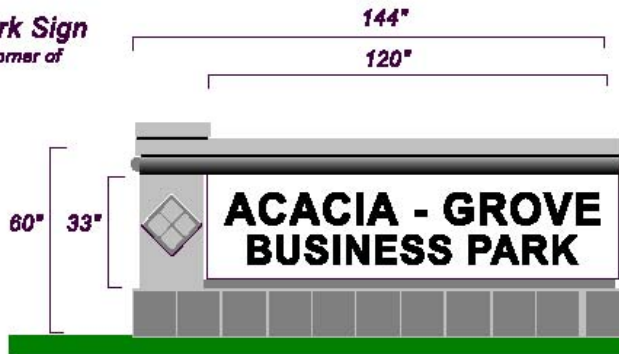
Allowed Signage One sign per street frontage over entrance windows.
2" thick "Ultra sign foam with painted faces & returns.
Max letter Height 24" Min. 6"
2 -lines Max Business name & reg logo
Max size 75% of height & width of clear sign area (See below)
Typestyle "Aerial Bold, Reg. or Italic or:-
Established Business Type styles & logos allowed with owners approval.
Sign colors to be either Black, Tomato Red (Pms 032) or Reflex Blue

TYPICAL CLEAR SIGN AREA



ACACIA FRONTAGE

SHEET "C"
Business Park Sign
Located on N. E. corner of
Groves & Acacia



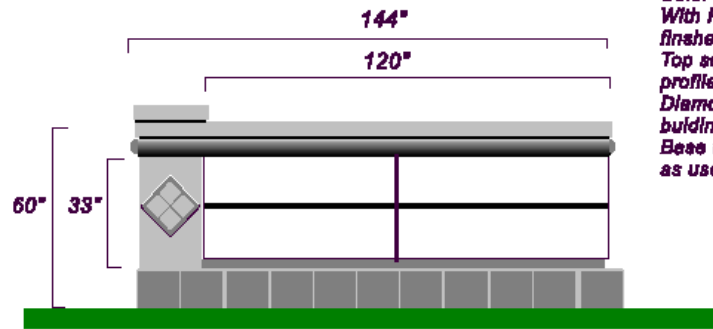
MONUMENT SIGN
All Aluminum Construction
With textured finish
Color to match building
With Raised Metal Letters
finished dark bronze
Top section to match building
profile.
Diamond motive to match
building decoration
Base to have porcelain tiles
as used on building



SHEET "E"

Business Park Sign

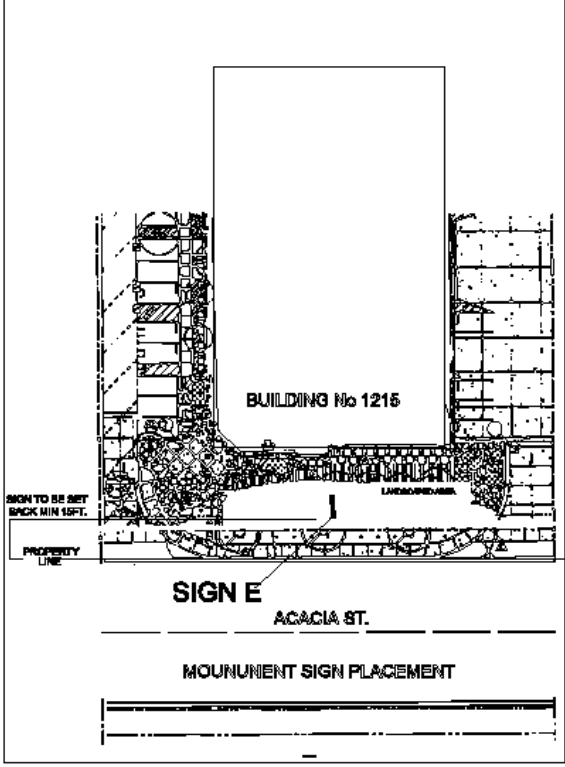
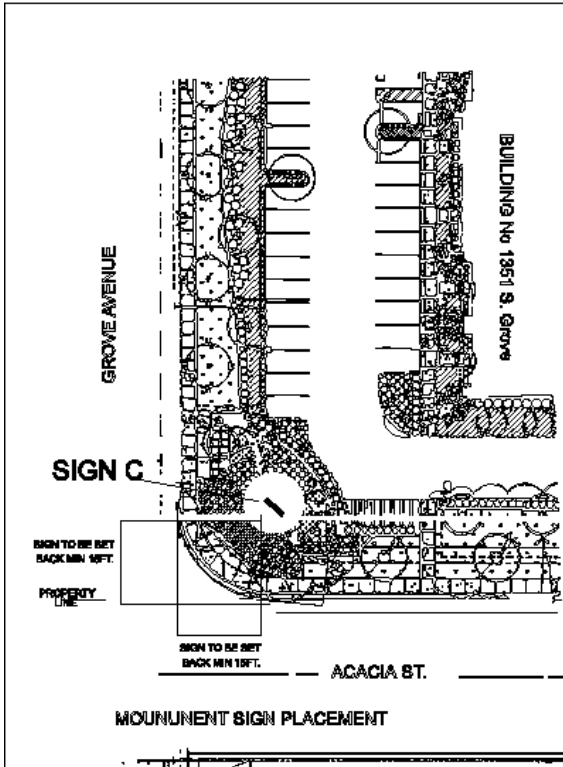
*Located on front of
Building 1215 Acacia Street
For tenants of units 101 - 104*

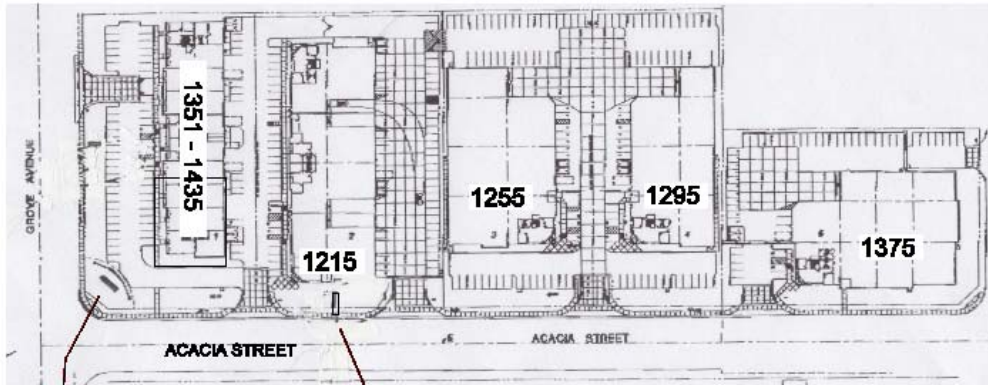


MONUMENT SIGN
*All Aluminum Construction
With textured finish
Color to match building
With Raised Metal Letters
finished dark bronze
Top section to match building
profile.
Diamond motive to match
building decoration
Base to have porcelain tiles
as used on building*

Sheet F







**MONUMENT
SIGN "C"**

**MONUMENT
SIGN "E"**

ACACIA - GROVE BUSINESS PARK

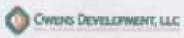


© 2016 RKZ

Building 1

1351 -1435 GROVE AVE.

Acacia Grove Business Park
Ontario, California



West Elevation



© 2016 RKZ

Building 2

1215 ACACIA ST..

Acacia Grove Business Park
Ontario, California



West Elevation





Building 3

1255 ACACIA ST.

South Elevation



Building 4

1295 ACACIA ST.

South Elevation

© 2004 FOCUS360

Building 5

1375 ACACIA ST.

Acacia Grove Business Park
Ontario, California

OWENS DEVELOPMENT, LLC

ikv FOCUS360

South Elevation