

Airport Corporate Centre at Centrelake SIGN PROGRAM

Project Location:
Guasti Road
Ontario, CA 91761

- Phase 1**
- Building 1: 3300 Guasti Road
 - Building 2: 3296 Guasti Road
 - Building 3: 3290 Guasti Road
 - Building 4: 3286 Guasti Road
 - Building 5: 3280 Guasti Road
 - Building 6: 3105 Guasti Road
 - Building 7: 3115 Guasti Road
 - Building 8: 3125 Guasti Road

FILE No. P28903-008

PLANNING DEPARTMENT
APPROVED

SUBJECT TO CONDITIONS

REF. P28903-000

Approved By: *[Signature]* Date: *1/10/2008*

Program and Signage:

asi modulex

5849 Uplander Way
Culver City, CA 90230
310/645-1400
310/645-9877 Fax
www.asimodulex.com

TABLE OF CONTENTS:

Page	Item
1	Project Directory
2.1	Written Criteria
2.2	Written Criteria (cont.)
2.3	Written Criteria (cont.)
3.1	Site Plan Building 1, 2, 3, 4, and 5
3.2	Site Plan Building 6, 7 and 8
3.3	Monument Location (South Site West Entry)
3.4	Monument Location (South Site East Entry)
4.1	Building 1 Elevations
4.2	Building 2 Elevations
4.3	Building 3 Elevations
4.4	Building 4 Elevations
4.5	Building 5 Elevations
4.6	Building 6 Elevations
4.7	Building 7 Elevations
4.8	Building 8 Elevations
5.1	Sign Types AP & AV
5.2	Sign Type AW
5.3	Sign Type O9
5.4	Sign Type CN
5.5	Sign Type V1
5.6	Sign Type V2
5.7	Sign Type B.2 (South West Driveway)
5.8	Sign Type B.2 (South West Driveway)
5.9	Sign Type B.3 (South East Driveway)
5.10	Primary Tenant Wall Identification

Project

AIRPORT
corporate
centre@centrelake

Airport Centre @ Centrelake

Sign Program

Project Location

Guasti Road
Ontario, CA 91761

asi>modulex

5849 Uplander Way
Culver City, CA 90230
310/645-1400
310/645-9877 Fax
www.asimodulex.com

These drawings involve confidential proprietary rights of ASI Systems and all design, manufacturing, reproduction, use and sale rights regarding the same are expressly reserved. These drawings are submitted under a confidential relationship for a specific purpose and are not to be used for any other project without the express written consent of ASI Systems. ASI Systems hereby grants its custody and agrees (a) that this document will not be copied, reproduced in whole or in part, nor its contents revealed in any manner or to any person except to meet the purpose for which it was delivered and (b) that any special features peculiar to its design will not be incorporated into other projects.

Project Data

Date: 09.27.
Scale: No Scale

Drawn by:
Checked by:

Revisio
11/14/
00/00/
00/00/

Table of Contents

Project



Airport Centre @ Centrelake

Sign Program

Project Location

Guasti Road
Ontario, CA 91761

asi > modulex

5849 Uplander Way
Culver City, CA 90231
310/645-1400
310/645-9877 Fa.
www.asimodulex.com

These drawings involve confidential, proprietary rights of ASI. Sign and graphic design concepts, drawings and materials are submitted under a confidential relationship for a specific purpose and the recipient, by accepting this document, assume custody and agrees (a) that this document will not be copied, in whole or in part, or disseminated in any manner or to any person, except to meet the purpose for which it was delivered and (b) that any special features peculiar to this design will not be incorporated into other projects.

Project Data

Date: 09.27.11
Scale: No Scale
Drawn by:
Checked by:
Revision
00/00/11
00/00/11
00/00/11

Project Directory

Project Address
3300 Airport Corporate Centre at Centrelake
Guasti Road
Ontario CA, 91761

Owner:
Armstrong-Butcher Properties, LLC
400 Emerald Bay, Suite 100
Laguna Beach, CA 92651

Phone: 949.497.4629
Fax: 949.497.4229

Centrelake Design Review Committee
The Emmons Co.
Phone: 800-227-6968

Ontario Planning Department
303 East "B" Street
Ontario, CA 91764

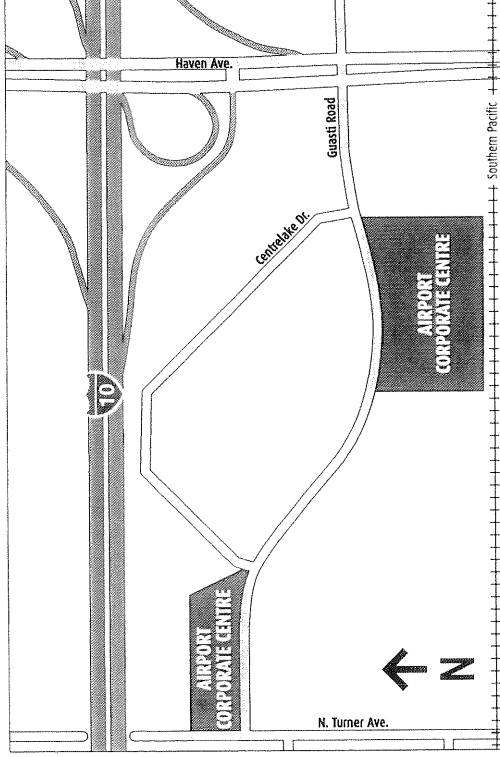
Contact: Charles H. Mercier
Phone: 909.395.2036
Fax: 909.395.2420
cmecier@ci.ontario.ca.us

Architect
GAA Architects
4 Park Plaza, Suite 120
Irvine, CA 92614

Contact: Craig Williamson
Phone: 949.474.1775
Fax: 949.553.9133
craig@gaaarchitects.com

Sign Program & Signage
ASI-Modulex
5849 Uplander Way
Culver City, CA 90230

Contact: J. Carlos Perez
Phone: 310.645.1400
Fax: 310.645.9877
carlos.perez@asimodulex.com



Area Map

The purpose of this sign program is to ensure that the signage at Airport Corporate at Centrelake reflects... the integrity and overall aesthetic values of Centrelake, the Landlord and the City of Ontario. Conformity with this program will be strictly enforced, and any non-conforming signs will be removed by the Landlord at the expense of the tenant.

GENERAL REQUIREMENTS

- 1 Prior to manufacture of any sign in Airport Corporate Centre at Centrelake, the Tenant shall submit to Landlord for written approval, two copies detailed drawings. These drawings shall include the building elevation to which the signs are to be attached, sign dimensions, graphics, location, colors, and method of attachment. This approval must be obtained prior to submittal to the City of Ontario.
- 2 All signs shall be reviewed for conformance with this criteria and overall design quality. Approval or disapproval of sign submittals based on aesthetics of design shall remain the sole right of the Landlord.
- 3 Prior to the install and manufacture of any sign, the tenant shall obtain a sign permit from the City of Ontario.
- 4 The tenant shall pay for all signs, related materials, and installation fees (including final inspection costs).
- 5 Tenant fascia signs will be limited to tenant's name, logo and or logotype otherwise, Optima Bold shall be used.
- 6 It is responsibility of the tenant's sign company to verify all conduit and transformer locations and service access prior to fabrication.
- 7 In the event a tenant vacates his premise, it is his responsibility to patch all holes and paint surface(s) to match existing color of fascia.
- 8 Landlord reserves the right to periodically hire an independent electrical engineer, at Tenant's sole expense, to inspect the installation of all Tenant's signs. Tenants will be required to have any discrepancies and/or code violations corrected at Tenant's expense. Any code violations, requests for sign removals, or discrepancies not corrected within fifteen (15) days of notice, may be corrected by Landlord at Tenant's expense.
- 9 All tenant signs shall be installed prior to opening for business, only after city permits are secured.
- 10 Cooperative tenant advertising, signing or seasonal event signing will require a specially event sign permit from the City of Ontario.

GENERAL SPECIFICATIONS

- 1 Sign sizes shall be limited to maximum widths shown on tenant's elevation, and also shall not exceed the general size outlined. Landlord has the final discretion when reviewing the proposed signage and reserves the right to not allow signage, even if it meets this criteria herein.
- 2 Signs shall be fabricated per specifications shown.
- 3 All signs and their installation shall comply with all local building and electrical codes.
- 4 All electrical signs will be fabricated by a U.L. approved sign company, according to U.L. specifications
- 5 Sign company to be fully licensed with the City and State and shall have full workman's compensation and general liability insurance.
- 6 All penetrations of exterior fascia or parapets are to be sealed watertight (color and finish to match existing building exterior).
- 7 All conduits, transformers, junction boxes raceways and openings in building surfaces shall be concealed. Exposed hardware shall be finished in a matter consistent with quality fabrication practices.
- 8 Signs shall be placed in locations as shown on elevations with Landlord approval.
- 9 All signs shall have its sign permit number, name of fabricator, date of installation and voltage in a visible location.
- 10 Any tenant sign left thirty (30) days after vacating premises shall become the property of the landlord unless previous arrangements have been agreed upon by Landlord and Tenant.

Project

AIRPORT
corporate.
centre@centrelake

Airport Centre @ Centrelake

Sign Program

Project Location

Guasti Road
Ontario, CA 91761

asi > modulex

5849 Uplander Way
Culver City, CA 90230
310/645-1400
310/645-9877 Fax
www.asimodullex.com

These drawings involve confidential proprietary rights of ASI Sign Systems and all design, manufacturing, reproduction, use and sale rights regarding the same are expressly reserved. These drawings are prepared for the sole use of the recipient, by accepting this document, the recipient agrees (a) that this document will not be copied or reproduced in whole or in part, and (b) that its contents revealed in any manner to any third party, without the prior written consent of ASI Sign Systems. ASI Sign Systems reserves the right to incorporate any features peculiar to this design will not be incorporated into other projects.

Project Data

Date: 09.27.0
Scale: No Scal
Drawn by: ,
Checked by: ,
Revision
00/00/c
00/00/c
00/00/c

**Written
Criteria**

Page 2.1

BUILDING SIGNS

Primary Tenants

- Primary tenants will be allowed one (1) wall sign per elevation to a maximum of two (2) elevations. These signs should be located above windows of the highest occupiable floor and below the top of the parapet. Primary tenant signs may be centered or offset toward either end of the major elevations; their precise locations will be determined prior to issuance of a sign permit.
- The maximum area of a primary tenant identification must not exceed one (1) square foot, per lineal foot of street or parking lot frontage.
- The size and location of each sign will be designated to be complementary and proportional to each individual building and in no case will the capital letter height exceed the established size shown on the following table.

Building Height in Stories	Cap Height in Inches
1	18
3	30
- Logo symbols must not exceed an area of 15% higher than the capital letter height and not exceed one and a half times (1.5x) the cap height in width. A logo shall be permitted in close proximity to the identification sign and be considered as part of the sign area.
- Primary tenants may utilize their logo graphics and typestyle.

3 Story Buildings:

- On 3 story buildings, reverse channel letters are to be used. The face is to match the individual building exterior aluminum mullion color. Primary tenants may use face-lit channel letters subject to approval by Landlord and the Centrelake Design Committee. The return of each letter form or logo will be 5 inches deep for face lit and 3 inches deep for reverse lit and in both cases the returns are to match the exterior aluminum mullion color.

1 Story Buildings:

- One story Primary tenant signage shall be reverse lit channel letters and face shall match the individual building exterior aluminum mullion color. The return of each form or logo will be 3 inches deep and returns are to match the exterior aluminum mullion color.

Secondary Tenants

3 Story Buildings:

- Secondary tenants will be limited to a maximum of one (1) sign per tenant unless the ground floor is occupied by only one tenant, in which case two (2) signs will be permitted. In no event will there be more than four (4) secondary tenant identification signs permitted per building and no more than two (2) per building elevation. These signs are to be located above windows of first floor and below top of parapet. These signs are to be offset toward each end of elevation.

- The maximum area for a 3 story secondary tenant identification sign must not exceed 22 square feet. The maximum capital letter height must not exceed 18 inches.

- These signs must be reverse lit channel letters and face is to match the individual building exterior aluminum mullion color. The return of each form or logo will be 3 inches deep and returns are to match the exterior aluminum mullion color.

- The secondary tenant identification for the 3 story building must utilize the project typestyle Optima Bold. Use of tenants logo and/or typeface is subject to approval by Landlord and the Centrelake Design Committee.

Exterior Entry Door Sign

1 Story Buildings:

- This sign will be limited to the identification of tenants with exterior entry doors.
- These signs must be located adjacent to the entry door(s) and must be positioned at eye level.
- Two signs will be allowed per approved tenant to a maximum of one (1) per tenant entry.
- Exterior entry door signs must utilize the project typeface Optima Bold and be 2 inch cut-out vinyl letters.

Project

AIRPORT
corporate
centre @ centrelake

Airport Centre @ Centrelake

Sign Program

Project Location

Guastl Road
Ontario, CA 91761

asi>modulex

5849 Uplander Wz
Culver City, CA 9023
310/645-1400
310/645-9877 Fx
www.asimodulex.com

These drawings involve confidential proprietary rights of Asi Si Systems and all design, manufacturing and construction details are submitted under a confidential relationship for a specific purpose and the recipient, by accepting this document, assumes responsibility for the use of the drawings. These drawings are not to be copied, reproduced, or distributed in any manner or to any person except to meet the purpose for which they were prepared and (b) that any special features peculiar to this design will not be incorporated into other projects.

Project Data

Date: 09.27.
Scale: No Sc
Drawn by:
Checked by:
Revision
00/00/
00/00/
00/00/

Writer
Criteria

Page 2.

Project



Airport Centre @ Centrelake

Sign Program

Project Location

Guasti Road
Ontario, CA 91761

asi > modulex

5849 Uplander Way
Culver City, CA 90230
310/645-1400
310/645-9877 Fax
www.asimodulex.com

These drawings, including confidential proprietary rights of ASI Sign Systems and all design, manufacturing, reproduction, use and sale rights regarding the same, are expressly reserved. These drawings are submitted under a confidential relationship for a specific purpose and the recipient, by accepting this document, assumes responsibility for its use. ASI Sign Systems and its agents shall not be held liable for any damages or losses incurred in whole or in part, nor its contents revealed in any manner or to any person except to meet the purpose for which was delivered and (b) that any special features peculiar to this design will not be incorporated into other projects

Project Data

Date: 09.27.00
Scale: No Scale
Drawn by: [Redacted]

Checked by: [Redacted]
Revision
00/00/00
00/00/00
00/00/00

Written Criteria

Page 2.3

PROHIBITED SIGNS

- 1 A-frame (portable) signs, unless approved as part of a temporary display pursuant.
- 2 Balloon, inflated signs, kites, and any other type of aerial sign unless approved as part of a temporary display.
- 3 Bench signs, except as authorized and approved by the City of Ontario.
- 4 Billboards.
- 5 Flashing, blinking, rotating or otherwise animated signs, except barber poles, time/temperature signs and theater marquee signs.
- 6 Roof signs.
- 7 Signs affixed to a vehicle, excluding permanent signs on commercial vehicles.
- 8 Signs erected upon or over public property, other than signs installed by local, state or federal agency.
- 9 Signs that emit or generate sound, smoke or similar material.
- 10 Signs shall not be placed on a rock, tree, or other natural feature.

Project Location

Guastli Road
Ontario, CA 91761

asi>modulex

5849 Uplander Way
Culver City, CA 9023
310/645-1440
310/645-9877 Fax
www.asimodulex.com

These drawings include confidential, proprietary rights of ASI Systems and all design, manufacturing, production, use and site rights regarding the same are expressly reserved. These drawings are submitted under a confidential relationship for a specific purpose and the recipient, by accepting, shall not be deemed to have agreed to reproduce, copy, disseminate, or otherwise use the information reproduced in whole or in part, nor its contents revealed in any manner or to any person except to meet the purpose for which it was delivered and (b) that any special features peculiar to it design will not be incorporated into other project

Project Data

Date: 09.27.

Scale: 1/4" = 30'-

Drawn by:

Checked by:

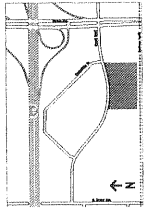
REVISIO

00/00/

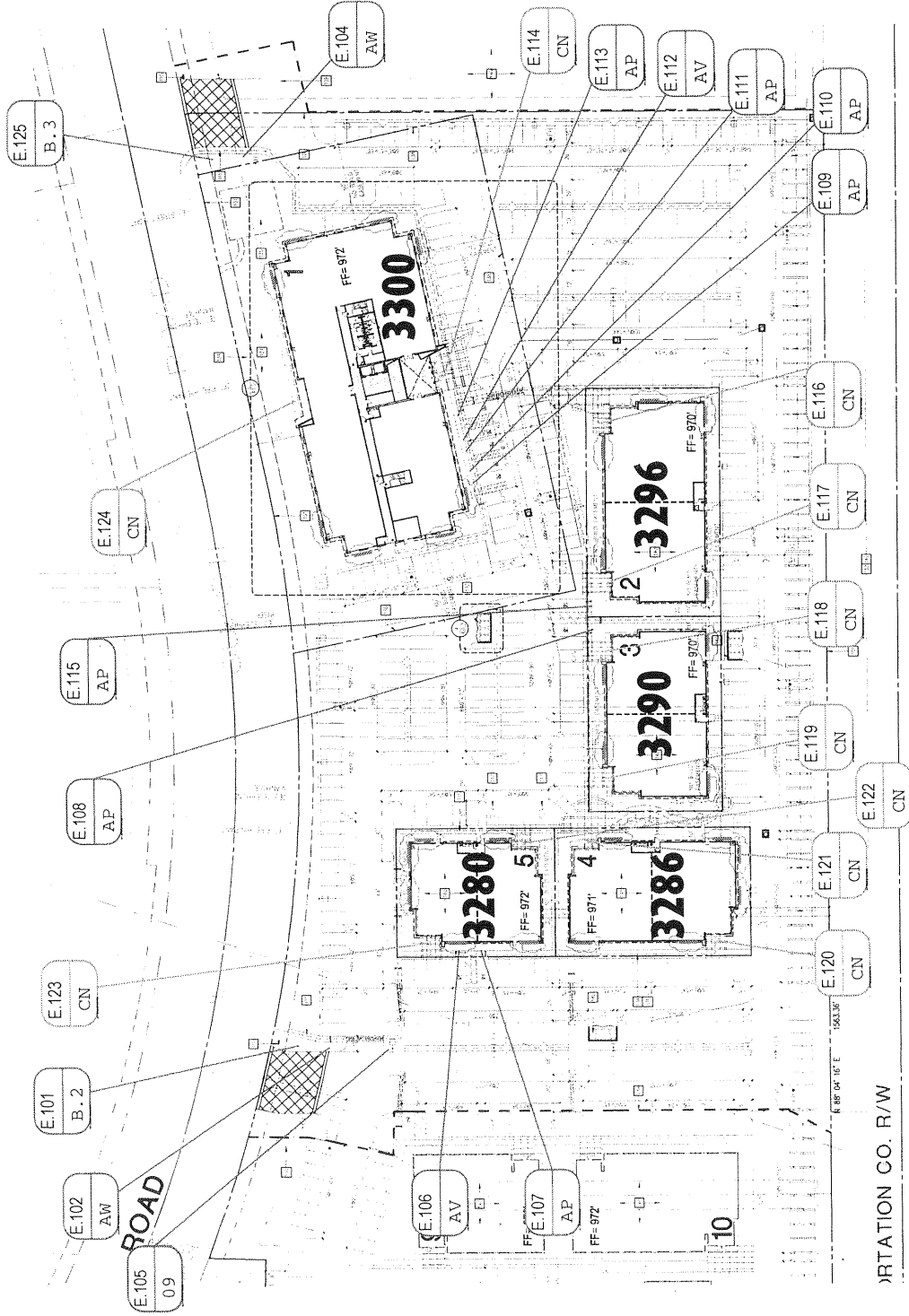
00/00/

00/00/

Site Plan



Phase I



- CN: Building Address
- AW: Accessible Parking Warning
- AP: Accessible Parking Sign
- AV: Accessible Van Parking Sign
- B.2: Secondary Monument
- O9: Parking Directional

Signage Legend

- Indicates Potential Primary Tenant Signage Location

ARTATION CO. R/W

RAILROAD RIGHT-OF-WAY

Project

AIRPORT
corporate
centre@centrelake

Airport Centre @ Centrelake

Sign Program

Project Location

Guastli Road
Ontario, CA 91761

asi>modulex

5849 Uplander Way
Culver City, CA 90230
310/645-1400
310/645-9877 Fax
www.asimodulex.com

These drawings involve confidential proprietary rights of ASI. ASI reserves all design and manufacturing reproduction rights and all rights regarding the same are expressly reserved. These drawings are submitted under a confidential relationship for a specific purpose and the recipient, by accepting this document, assumes the responsibility for its use. ASI does not warrant the accuracy or completeness of the information contained hereon, in whole or in part, nor its contents revealed in any manner or to any person except to meet the purpose for which it was delivered and (b) that any special features peculiar to its design will not be incorporated into other projects.

Project Data

Date: 09.27.

Scale: 1/4" = 30'-0"

Drawn by:

Checked by:

Revision:

00/00/

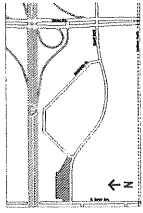
00/00/

00/00/

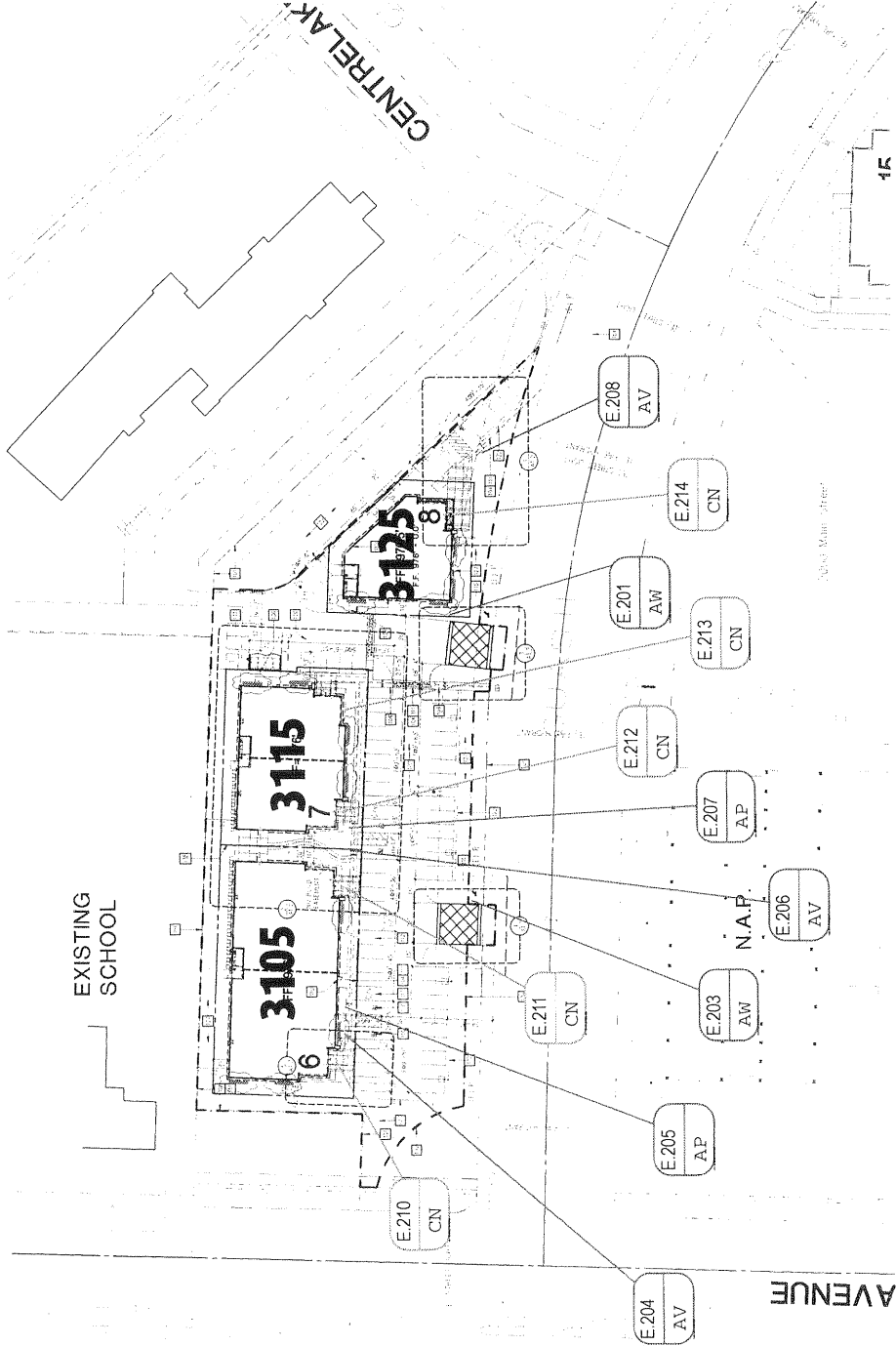
Site

Plan

Page 3..



Phase I



Signage Legend

- CN: Building Address
- AW: Accessible Parking Warning
- AP: Accessible Parking Sign
- AV: Accessible Van Parking Sign
- B.2: Secondary Monument
- 09: Parking Directional

Indicates Potential Primary Tenant Signage Location



Project

AIRPORT
corporate
Centre@centrelake

Airport Centre @ Centrelake

Sign Program

Project Location

Guasti Road
Ontario, CA 91761

asi > modulex

5849 Uplander Way
Culver City, CA 90231
310/645-1401
310/645-9877 Fa.
www.asimodulex.com

These drawings involve confidential proprietary rights of ASI Sign Systems and all design, manufacturing, reproduction, use and sale of the drawings, designs, drawings, specifications, and related information are submitted under a confidential relationship for a specific purpose and the recipient, by accepting this document, assume custody and agrees (a) that this document will not be copied, reproduced, distributed, or otherwise made available to any third party in any manner or to any person, except to meet the purpose for which it was delivered and (b) that any special features peculiar to this design will not be incorporated into other projects.

Project Data

Date: 09.27.11

Scale: 1" = 20'-1"

Drawn by:

Checked by:

Revisor:

00/00/11

00/00/11

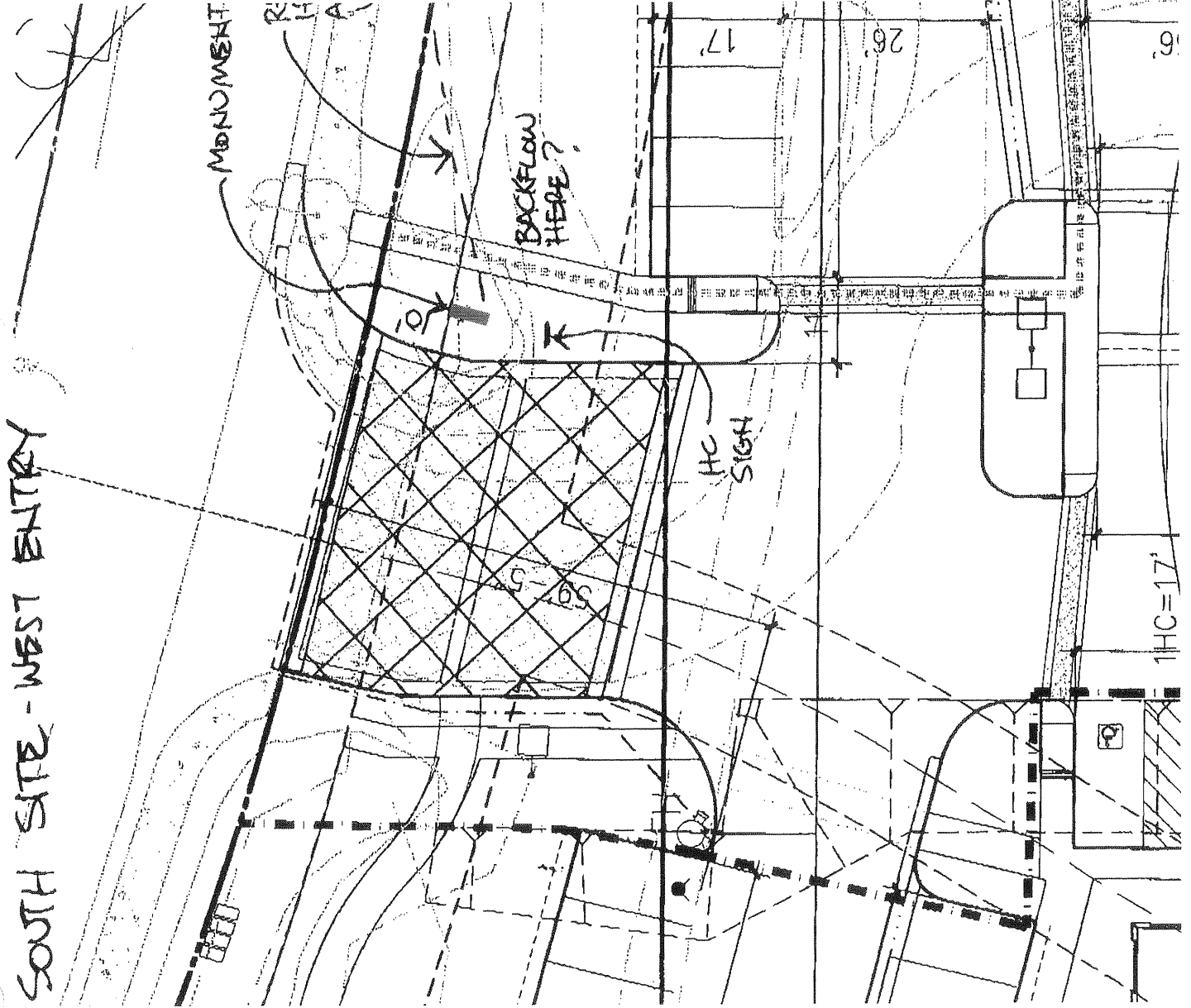
00/00/11

Monument

Locator

(South Site West Entry)

Page 3.3



Project

AIRPORT
corporate
centre@centrelake

Airport Centre @ Centrelake

Sign Program

Project Location

Guasti Road
Ontario, CA 91761

asi > modulex

5849 Uplander Wa
Culver City, CA 9023
310/645-140
310/645-9877 Fa
www.asimodulex.com

These drawings involve confidential proprietary rights of ASI Sign and are to be used only for the project and site specifically identified. All rights regarding these drawings are reserved. These drawings are submitted under a confidential relationship for a specific purpose and the recipient, by accepting this document, assumes custody and agrees (a) that this document will not be copied, reproduced, or otherwise disseminated in any form or by any means or to any person except to meet the purpose for which it was delivered and (b) that any special features peculiar to this design will not be incorporated into other project designs.

Project

Date: 09.27.

Scale: 1" = 20'-

Drawn by:

Checked by:

Revision

00/00/

00/00/

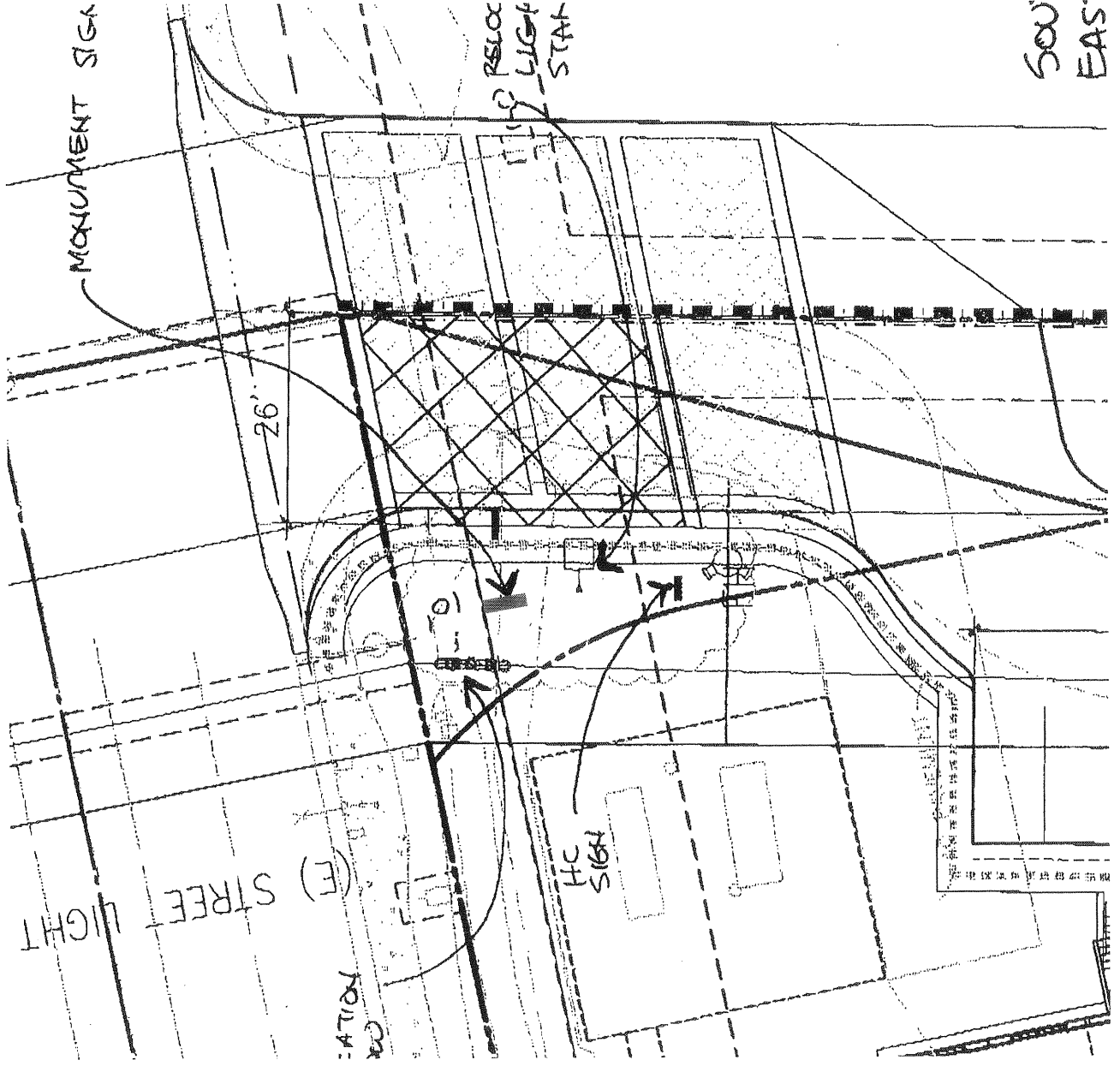
00/00/

Monumen

Locator

(South Site East Entry)

Page 3.1



Project

AIRPORT
corporate
centre@centrelake

Airport Centre @ Centrelake

Sign Program

Project Location

Guasti Road
Ontario, CA 91761

asi>modulex

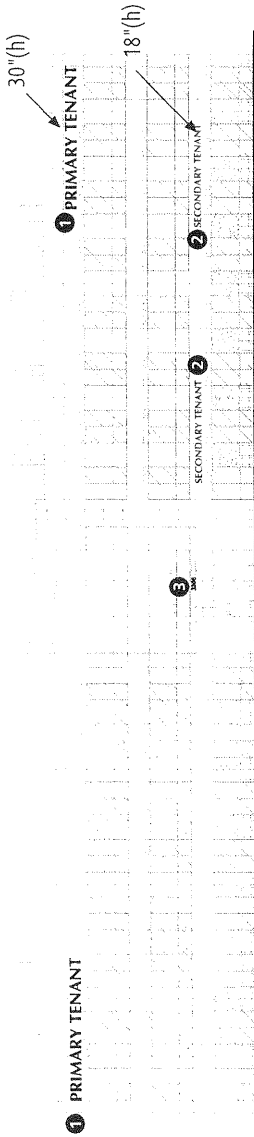
5849 Uplander Wa
Culver City, CA 9023
310/645-140
310/645-9877 Fa
www.asimodulex.com

These drawings involve confidential proprietary rights of ASI SIG Systems and all design, manufacturing, reproduction, use and sale of the drawings are restricted under a confidential relationship for the purpose and the recipient, by accepting this document, assumes custody and agrees (a) that this document will not be copied, reproduced in whole or in part, nor its contents revealed to any third party without the written consent of ASI SIG Systems. (b) that any special features peculiar to this design will not be incorporated into other projects.

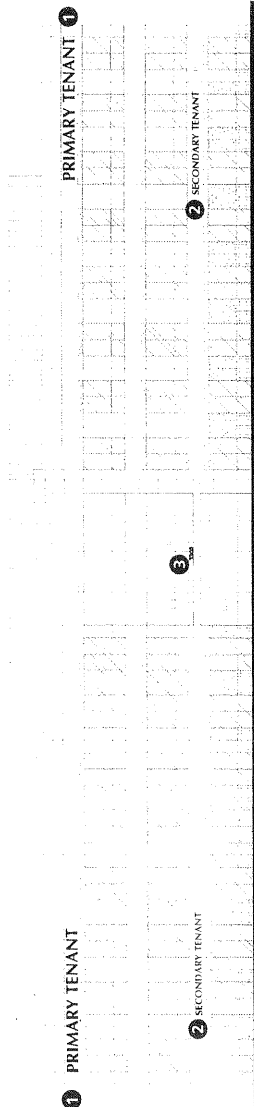
Project Data

Date: 09.27.11
Scale: 1/4" = 10'-0"
Drawn by:
Checked by:
Revisor
00/00/11
00/00/11
00/00/11

**Elevations
Building 1**



South Elevation

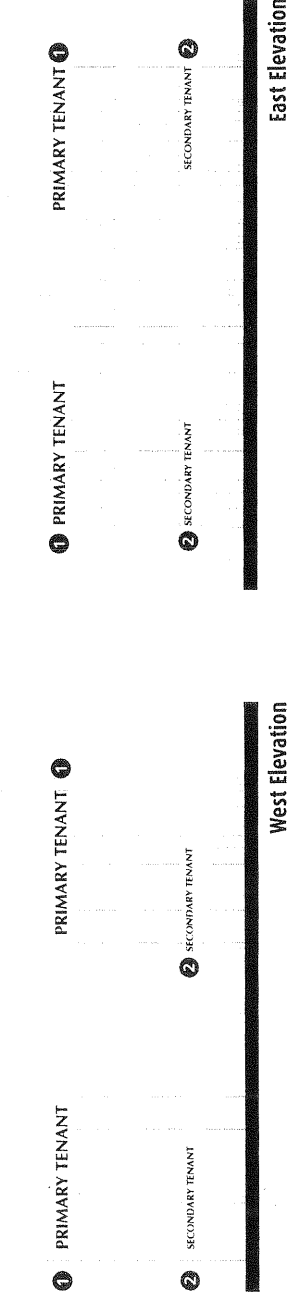


North Elevation

General Notes for 3 Story Tenant Signage (See page 2.2 "Building Signs" for more information and page 5.9 for construction details).

- 1 **PRIMARY TENANT** Identification for 3 Story Buildings
 - Primary tenants (anchor tenant as designated by landlord) will be allowed **one (1) wall sign per elevation to a maximum of two (2) elevations**.
 - Cap height in inches shall not exceed 30 inches for 3 story buildings.
 - Primary tenants may utilize their logo graphics and typestyle.
 - 3 story Primary tenant signs may be either face-lit individual channel letters (prior approval by Landlord and Centrelake Design Review Committee) or reverse lit channel letters. The return of each letter form or logo will be a maximum of 5 inches deep for face lit and 3 inches deep for reverse lit.
- 2 **SECONDARY TENANT** Identification for 3 Story Buildings
 - Maximum of 1 sign per tenant unless ground floor is occupied by only 1 tenant, in which case, 2 will be permitted.
 - **No more than 4 secondary tenant signs per building and no more than 2 per building elevation.**
 - Maximum area must not exceed 22 square feet. Maximum capital letter height must not exceed 18 inches.
 - Signs must be reverse lit, individually fabricated letters with a maximum thickness of 3 inches deep.
 - Typestyle must be Optima Bold.
 - Color of these signs must be finished to match the predominate exterior aluminium color.

3 **BUILDING ADDRESS** (Sign Type CN)



West Elevation

East Elevation

Project

AIRPORT
corporate
centre@centrelake

Airport Centre @ Centrelake

Sign Program

Project Location

Guasti Road
Ontario, CA 91761

asi modulex

5849 Uplander Way
Culver City, CA 90230
310/645-1400
310/645-9877 Fax
www.asimoddulex.com

These drawings involve confidential proprietary rights of ASI Sign Systems and all design, manufacturing, reproduction, use and sale rights regarding the same are expressly reserved. These drawings are to be used solely for the purpose of this document, for the purpose and the recipient, by accepting this document, assume custody and agrees (a) that this document will not be copied, reproduced in whole or in part, nor its contents revealed in any manner, and (b) that any special features peculiar to this design will not be incorporated into other projects

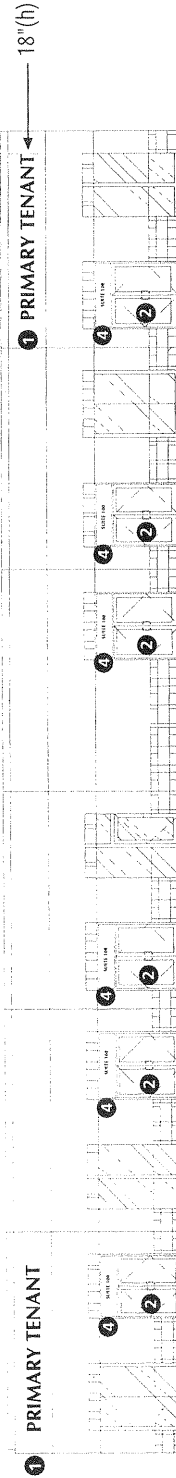
Project Data

Date: 09.27.0
Scale: 1/2" = 10'-0
Drawn by: J
Checked by: -
Revision
00/00/0
00/00/0
00/00/0

**Elevations
Building 2**



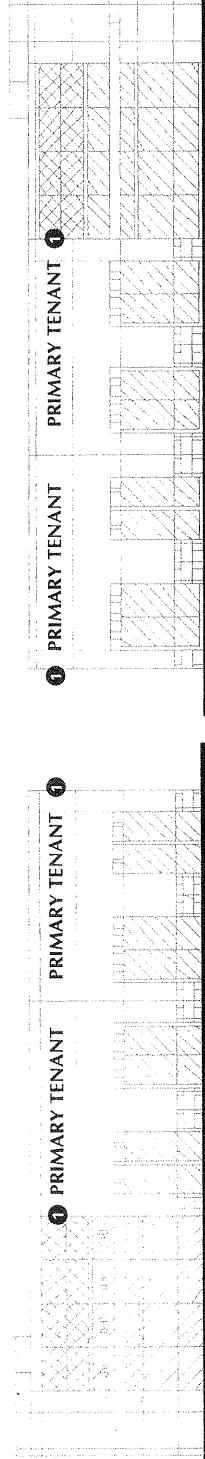
North Elevation



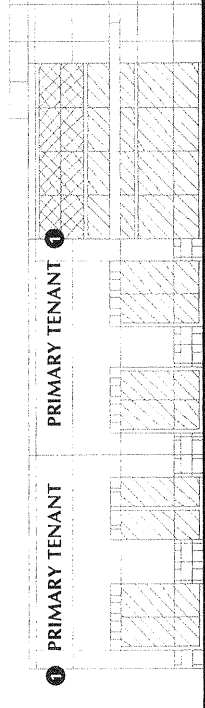
South Elevation

General Notes for 1 Story Tenant Signage (See page 2.2 "Building Signs" for more information and page 5.9 for construction details).

- 1 PRIMARY TENANT** Identification for 1 Story Buildings
 - Primary tenants (anchor tenant as designated by landlord) will be allowed **one (1) wall sign per elevation to a maximum of two (2) elevations**.
 - Cap height in inches shall not exceed 18 for 1 story buildings.
 - Primary tenants may utilize their logo graphics and typestyle.
 - The face and returns of all primary tenant signs will be finished to match the individual building exterior aluminum mullion color.
 - Primary tenant shall be reverse lit individual channel letters. The return of each letter form or logo will be a maximum of 3 inches deep.
- 2 EXTERIOR ENTRY SIGN** Identification for 1 Story Buildings (Sign Type V2)
 - This sign will be limited to the identification of tenants with exterior entry doors.
 - These signs must be located adjacent to the entry door(s) and must be positioned at eye level.
 - Two signs will be allowed per approved tenant to a maximum of one (1) per tenant entry.
 - Exterior entry door signs must utilize the project typeface Optima Bold and be 2 inch cut-out silver vinyl letters.
- 3 BUILDING ADDRESS** (Sign Type CN)
- 4 SUITE NUMBER** Identification for 1 Story Buildings (Sign Type VT)
 - Suite number is to be centered in transom of primary and secondary tenants entry door(s).
 - Text height for suite numbers is to be 5"
 - Sign will use Optima Bold font cut-out silver vinyl letters.



West Elevation



East Elevation

Project

AIRPORT
corporate
centre@centrelake

Airport Centre @ Centrelake

Sign Program

Project Location

Guasti Road
Ontario, CA 91761

asi > modulex

5849 Uplander Wa
Culver City, CA 9023
310/645-140
310/645-9877 Fa
www.asimodulex.com

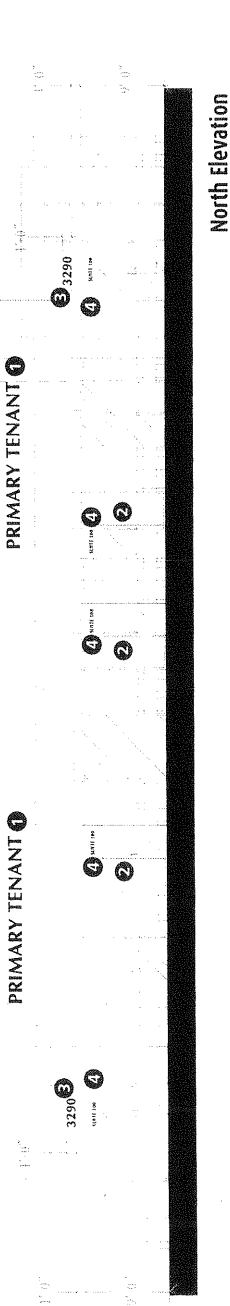
These drawings involve confidential proprietary rights of ASI SIG Systems and all design, manufacturing, reproduction, use and sale rights regarding the same are expressly reserved. These drawings are submitted under a confidential relationship for a specific project and are not to be reproduced, copied, distributed, loaned, custody and address (a) that this document will not be copied, reproduced in whole or in part, nor its contents revealed in any manner, or to any person except to meet the purpose for which was delivered and (b) that any special features peculiar to this design will not be incorporated into other project

Project
Date: 09.27.1
Scale: 1/2" = 10'-
Data

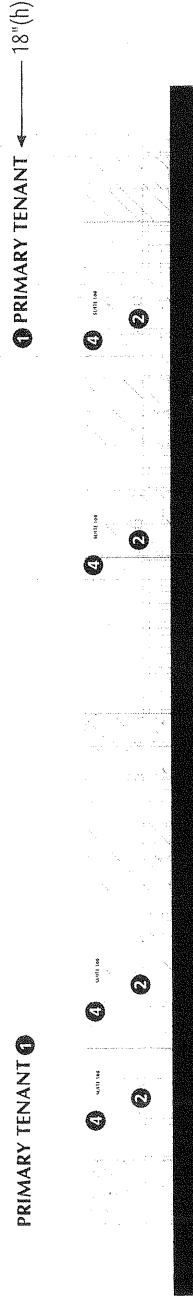
Drawn by:
Checked by:
Revisor
00/00/1
00/00/1
00/00/1

**Elevations
Building 3**

Page 4.:



North Elevation



South Elevation

General Notes for 1 Story Tenant Signage (See page 2.2 "Building Signs" for more information and page 5.9 for construction details).

- 1 **PRIMARY TENANT** Identification for 1 Story Buildings
 - Primary tenants (anchor tenant as designated by landlord) will be allowed **one (1) wall sign per elevation to a maximum of two (2) elevations.**
 - Cap height in inches shall not exceed 18 for 1 story buildings.
 - Primary tenants may utilize their logo graphics and typestyle.
 - The face and returns of all primary tenant signs will be finished to match the individual building exterior aluminum mullion color.
 - Primary tenant shall be reverse lit individual channel letters. The return of each letter form or logo will be a maximum of 3 inches deep.
- 2 **EXTERIOR ENTRY SIGN** Identification for 1 Story Buildings (Sign Type V2)
 - This sign will be limited to the identification of tenants with exterior entry doors.
 - These signs must be located adjacent to the entry door(s) and must be positioned at eye level.
 - Two signs will be allowed per approved tenant to a maximum of one (1) per tenant entry.
 - Exterior entry door signs must utilize the project typeface Optima Bold and be 2 inch cut-out silver vinyl letters.
- 3 **BUILDING ADDRESS** (Sign Type CN)
- 4 **SUITE NUMBER** Identification for 1 Story Buildings (Sign Type V1)
 - Suite number is to be centered in transom of primary and secondary tenants entry door(s).
 - Text height for suite numbers is to be 5".
 - Sign will use Optima Bold font cut-out silver vinyl letters.

Project

AIRPORT
corporate
centre@centrelake

Airport Centre @ Centrelake

Sign Program

Project Location

Guasti Road
Ontario, CA 91761

asi > modulex

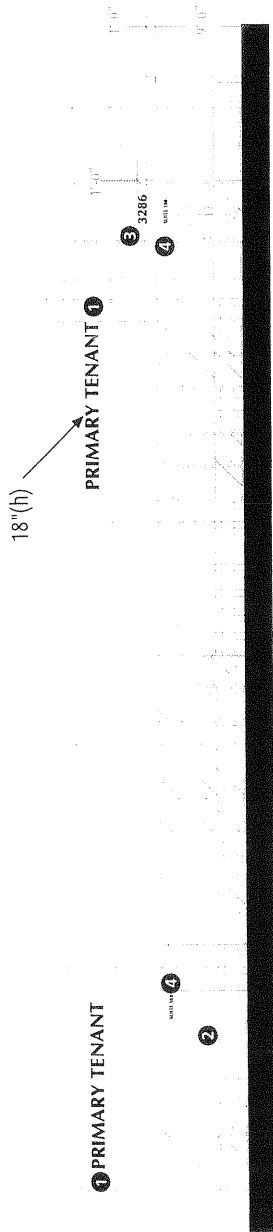
5849 Uplander Way
Culver City, CA 90230
310/645-1140
310/645-9877 Fax
www.asimodulex.com

These drawings involve confidential proprietary rights of ASI Systems and all design, manufacturing, reproduction, use and sale rights shall remain with ASI Systems and its affiliates. These drawings shall be used only for the project and shall not be used for any other purpose and the recipient, by accepting this document, assumes custody and agrees (a) that this document will not be copied, reproduced in whole or in part, nor its contents revealed in a written or electronic form, (b) that any special features peculiar to this design will not be incorporated into other projects.

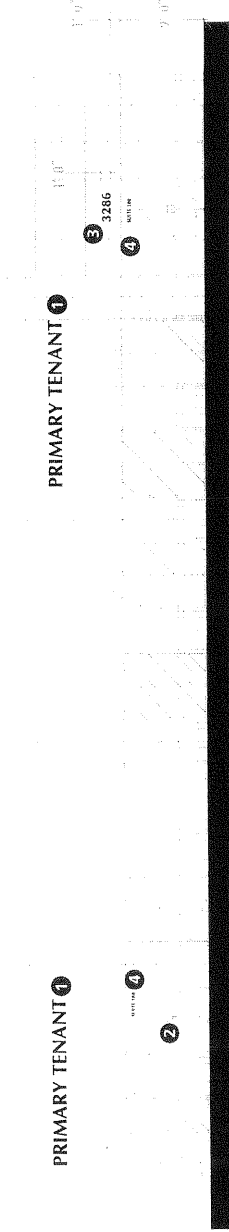
Project Data

Date: 09.27.
Scale: 1/2" = 10'-
Drawn by:
Checked by:
Revised
00/00/
00/00/
00/00/

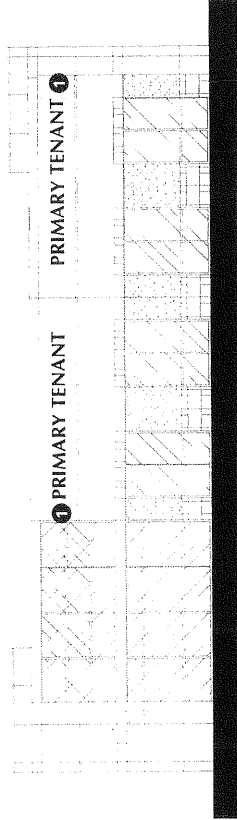
**Elevation:
Building**



East Elevation



West Elevation



South Elevation

General Notes for 1 Story Tenant Signage (See page 2.2 "Building Signs" for more information and page 5.9 for construction details).

- 1 PRIMARY TENANT** Identification for 1 Story Buildings
 - Primary tenants (anchor tenant as designated by landlord) will be allowed **one (1) wall sign per elevation to a maximum of two (2) elevations.**
 - Cap height in inches shall not exceed 18 for 1 story buildings.
 - Primary tenants may utilize their logo graphics and typestyle.
 - The face and returns of all primary tenant signs will be finished to match the individual building exterior aluminum millium color.
 - Primary tenant shall be reverse lit individual channel letters. The return of each letter form or logo will be a maximum of 3 inches deep.
- 2 EXTERIOR ENTRY SIGN** Identification for 1 Story Buildings (Sign Type V2)
 - This sign will be limited to the identification of tenants with exterior entry doors.
 - These signs must be located adjacent to the entry door(s) and must be positioned at eye level.
 - Two signs will be allowed per approved tenant to a maximum of one (1) per tenant entry.
 - Exterior entry door signs must utilize the project typeface Optima Bold and be 2 inch cut-out silver vinyl letters.
- 3 BUILDING ADDRESS** (Sign Type CN)
- 4 SUITE NUMBER** Identification for 1 Story Buildings (Sign Type V1)
 - Suite number is to be centered in transom of primary and secondary tenants entry door(s).
 - Text height for suite numbers is to be 5".
 - Sign will use Optima Bold font cut-out silver vinyl letters.

Project



Airport Centre @ Centrelake

Sign Program

Project Location

Guasti Road
Ontario, CA 91761



5849 Uplander W
Culver City, CA 9023
310/645-146
310/645-9877 F
www.asimodulex.co

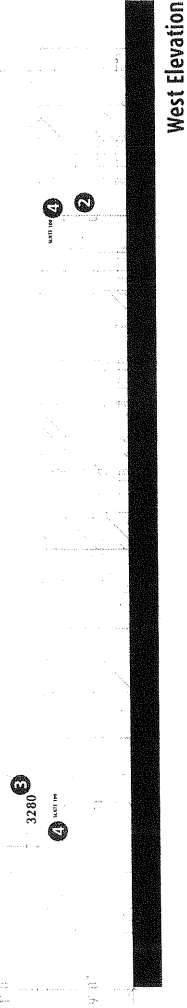
These drawings involve confidential proprietary rights of ASI S...
rights regarding the same are expressly reserved. These drawings...
purpose and the recipient, by accepting this document, assumes...
reproduced in whole or in part, nor its contents revealed in a...
manner or to any person except to meet the purpose for which...
was delivered and (b) that any special features peculiar to t...
design will not be incorporated into other projects.

Project Data

Date: 09.27
Scale: 1/2" = 10'
Drawn by
Checked by:
REVISION
00/00/
00/00/
00/00/

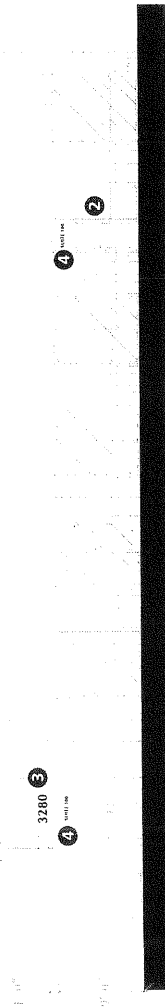
Elevation:
Building !

1 PRIMARY TENANT 18"(h)



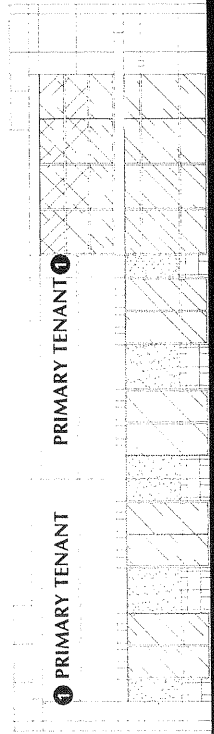
West Elevation

PRIMARY TENANT



East Elevation

1 PRIMARY TENANT



North Elevation

General Notes for 1 Story Tenant Signage (See page 2.2 "Building Signs" for more information and page 5.9 for construction details).

- 1 PRIMARY TENANT Identification for 1 Story Buildings
Primary tenants (anchor tenant as designated by landlord) will be allowed one (1) wall sign per elevation to a maximum of two (2) elevations.
Cap height in inches shall not exceed 18" for 1 story buildings.
Primary tenants may utilize their logo graphics and typestyle.
The face and returns of all primary tenant signs will be finished to match the individual building exterior aluminum mullion color.
Primary tenant shall be reverse lit individual channel letters. The return of each letter form or logo will be a maximum of 3 inches deep.
2 EXTERIOR ENTRY SIGN Identification for 1 Story Buildings (Sign Type V2)
This sign will be limited to the identification of tenants with exterior entry doors.
These signs must be located adjacent to the entry door(s) and must be positioned at eye level.
Two signs will be allowed per approved tenant to a maximum of one (1) per tenant entry.
Exterior entry door signs must utilize the project typeface Optima Bold and be 2 inch cut-out silver vinyl letters.
3 BUILDING ADDRESS (Sign Type CN)
4 SUITE NUMBER Identification for 1 Story Buildings (Sign Type V1)
Suite number is to be centered in transom of primary and secondary tenants entry door(s).
Text height for suite numbers is to be 5".
Sign will use Optima Bold font cut-out silver vinyl letters.

Project



Airport Centre @ Centrelake

Sign Program

Project Location

Guasti Road
Ontario, CA 91761



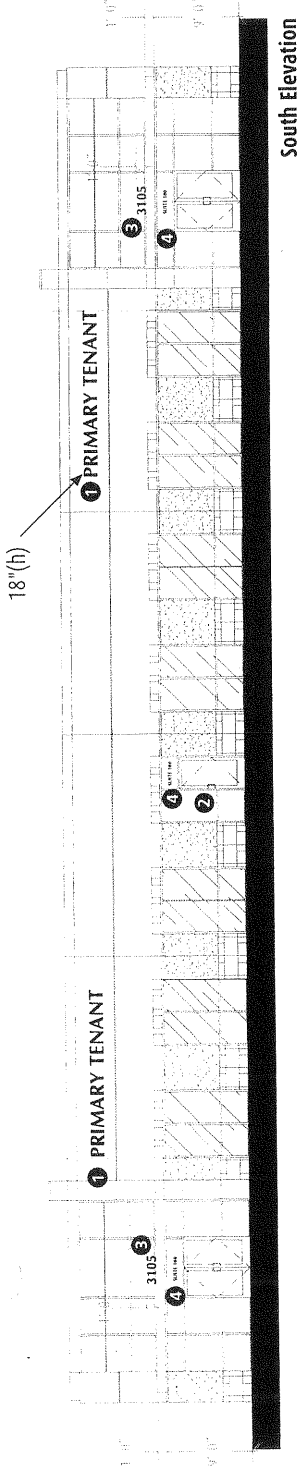
5849 Uplander Wa
Culver City, CA 9023
310/645-140
310/645-9877 Fx
www.asimodulex.com

These drawings receive confidential proprietary rights of ASI Systems and all design, manufacturing, reproduction, use and so rights regarding the same are expressly reserved. These drawings are submitted under a confidential relationship for a specific purpose and the recipient, by accepting this document, assumes responsibility for its use. ASI Systems and its agents shall not be held liable, in whole or in part, for its contents revealed in a manner or to any person except to meet the purpose for which was delivered and (b) that any special features peculiar to its design will not be incorporated into other projects.

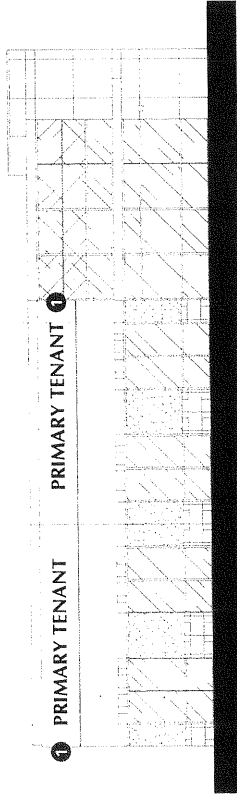
Project Data

Date: 09.27.
Scale: 1/2" = 10'-
Drawn by:
Checked by:
Revision:
00/00/
00/00/
00/00/

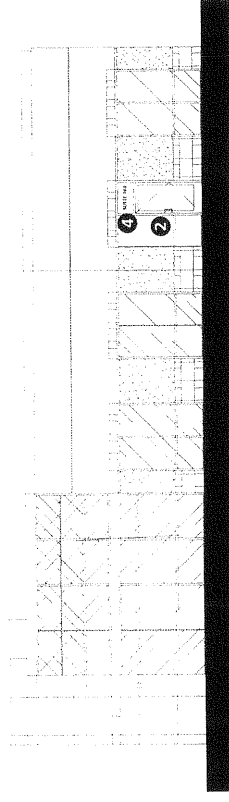
Elevation:
Building (



South Elevation



West Elevation



East Elevation

General Notes for 1 Story Tenant Signage (See page 2.2 "Building Signs" for more information and page 5.9 for construction details).

- 1 PRIMARY TENANT** Identification for 1 Story Buildings
 - Primary tenants (anchor tenant as designated by landlord) will be allowed **one (1) wall sign per elevation to a maximum of two (2) elevations.**
 - Cap height in inches shall not exceed 18 for 1 story buildings.
 - Primary tenants may utilize their logo graphics and typestyle.
 - The face and returns of all primary tenant signs will be finished to match the individual building exterior aluminum mullion color.
 - Primary tenant shall be reverse lit individual channel letters. The return of each letter form or logo will be a maximum of 3 inches deep.
- 2 EXTERIOR ENTRY SIGN** Identification for 1 Story Buildings (Sign Type V2)
 - This sign will be limited to the identification of tenants with exterior entry doors.
 - These signs must be located adjacent to the entry door(s) and must be positioned at eye level.
 - Two signs will be allowed per approved tenant to a maximum of one (1) per tenant entry.
 - Exterior entry door signs must utilize the project typeface Optima Bold and be 2 inch cut-out silver vinyl letters.
- 3 BUILDING ADDRESS** (Sign Type CN)
- 4 SUITE NUMBER** Identification for 1 Story Buildings (Sign Type V1)
 - Suite number is to be centered in transom of primary and secondary tenants entry door(s).
 - Text height for suite numbers is to be 5".
 - Sign will use Optima Bold font cut-out silver vinyl letters.

Project

AIRPORT
corporate
centre@centrelake

Airport Centre @ Centrelake

Sign Program

Project Location

Guasti Road
Ontario, CA 91761

asi>modulex

5849 Uplander Way
Culver City, CA 90230
310/645-1400
310/645-9877 Fax
www.asimodulex.com

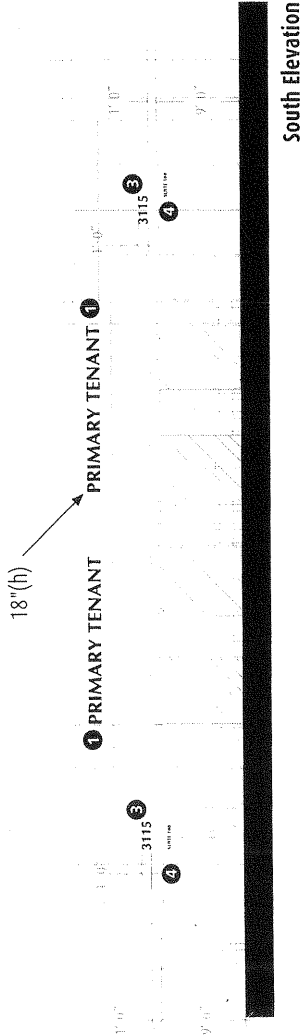
These drawings involve confidential proprietary rights of ASI Systems and all design, manufacturing, reproduction, use and sale of the drawings and designs contained herein shall be the property of ASI Systems and shall remain confidential in whole or in part. The recipient of these drawings shall not disclose them to any third party without the written consent of ASI Systems. The recipient shall return these drawings to ASI Systems upon completion of the project and shall retain custody and agrees (a) that this document will not be copied, reproduced in whole or in part, nor its contents revealed in a printed or electronic form, and (b) that any special features peculiar to this design will not be incorporated into other project designs.

Project Data

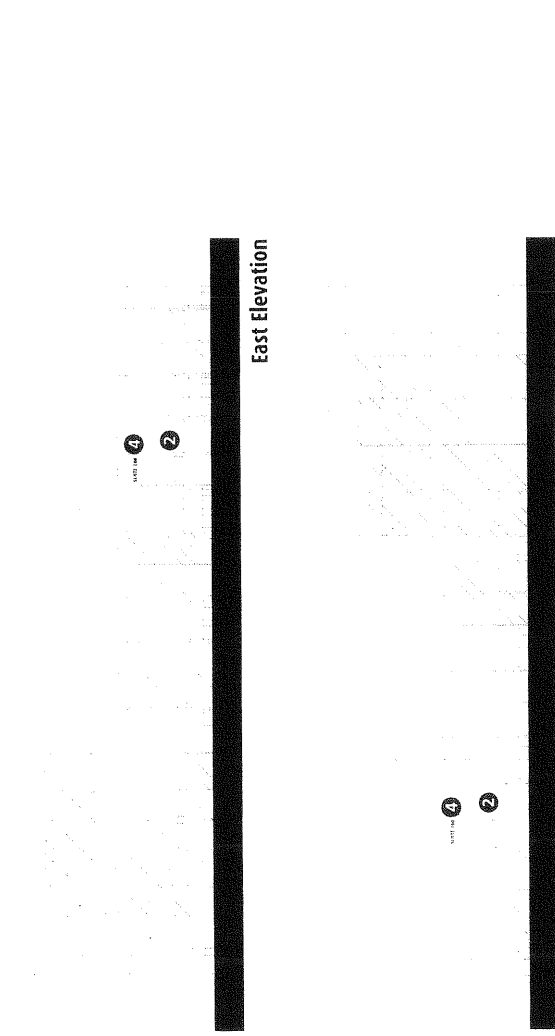
Date: 09.27.
Scale: 1/2" = 10'.
Drawn by:
Checked by:
Revised
00/00/
00/00/
00/00/

**Elevation:
Building 7**

Page 4.



South Elevation



East Elevation



West Elevation

General Notes for 1 Story Tenant Signage (See page 2.2 "Building Signs" for more information and page 5.9 for construction details).

- 1 PRIMARY TENANT** Identification for 1 Story Buildings
 - Primary tenants (anchor tenant as designated by landlord) will be allowed **one (1) wall sign per elevation to a maximum of two (2) elevations.**
 - Cap height in inches shall not exceed 18 for 1 story buildings.
 - Primary tenants may utilize their logo graphics and typestyle.
 - The face and returns of all primary tenant signs will be finished to match the individual building exterior aluminum mullion color.
 - Primary tenant shall be reverse lit individual channel letters. The return of each letter form or logo will be a maximum of 3 inches deep.
- 2 EXTERIOR ENTRY SIGN** Identification for 1 Story Buildings (Sign Type V2)
 - This sign will be limited to the identification of tenants with exterior entry doors.
 - These signs must be located adjacent to the entry door(s) and must be positioned at eye level.
 - Two signs will be allowed per approved tenant to a maximum of one (1) per tenant entry.
 - Exterior entry door signs must utilize the project typeface Optima Bold and be 2 inch cut-out silver vinyl letters.
- 3 BUILDING ADDRESS** (Sign Type CN)
- 4 SUITE NUMBER** Identification for 1 Story Buildings (Sign Type V1)
 - Suite number is to be centered in transom of primary and secondary tenants entry door(s).
 - Text height for suite numbers is to be 5".
 - Sign will use Optima Bold font cut-out silver vinyl letters.

Project

AIRPORT
corporate
centre @ centrelake

Airport Centre @ Centrelake

Sign Program

Project Location

Guasti Road
Ontario, CA 91761

asi > modulex

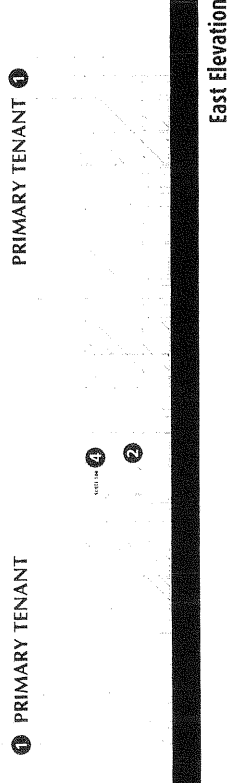
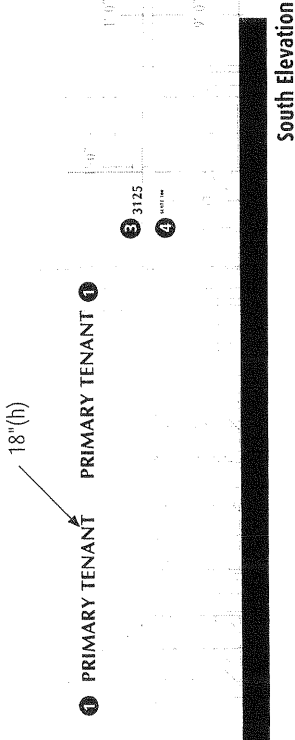
5849 Uplander Wa
Culver City, CA 90023
310/645-140
310/645-9877 Fa
www.asimodulex.com

These drawings involve confidential proprietary rights of ASI Sign Systems and all design, manufacturing, reproduction, use and sale rights regarding the same are expressly reserved. These drawings are prepared for the use of the client for the specific project purpose and the recipient, by accepting this document, assumes custody and agrees (a) that this document will not be copied, reproduced, in whole or in part, nor its contents revealed in any manner to any person except to meet the purpose for which it was prepared, and (b) that the design and drawings herein are design will not be incorporated into other project

Project Data

Date: 09.27.17
Scale: 1/2" = 10'-0"
Checked by:
Revisor
00/00/
00/00/
00/00/

**Elevation:
Building &**



General Notes for 1 Story Tenant Signage (See page 2.2 "Building Signs" for more information and page 5.9 for construction details).

- 1 **PRIMARY TENANT** Identification for 1 Story Buildings
 - Primary tenants (anchor tenant as designated by landlord) will be allowed **one (1) wall sign per elevation to a maximum of two (2) elevations**.
 - Cap height in inches shall not exceed 18 for 1 story buildings.
 - Primary tenants may utilize their logo graphics and typestyle.
 - The face and returns of all primary tenant signs will be finished to match the individual building exterior aluminum mullion color.
 - Primary tenant shall be reverse lit individual channel letters. The return of each letter form or logo will be a maximum of 3 inches deep.
- 2 **EXTERIOR ENTRY SIGN** Identification for 1 Story Buildings (Sign Type V2)
 - This sign will be limited to the identification of tenants with exterior entry doors.
 - These signs must be located adjacent to the entry door(s) and must be positioned at eye level.
 - Two signs will be allowed per approved tenant to a maximum of one (1) per tenant entry.
 - Exterior entry door signs must utilize the project typeface Optima Bold and be 2 inch cut-out silver vinyl letters.
- 3 **BUILDING ADDRESS** (Sign Type CN)
- 4 **SUITE NUMBER** Identification for 1 Story Buildings (Sign Type V1)
 - Suite number is to be centered in transom of primary and secondary tenants entry door(s).
 - Text height for suite numbers is to be 5".
 - Sign will use Optima Bold font cut-out silver vinyl letters.

Project

AIRPORT
corporate
centre@centrelake

Airport Centre @ Centrelake

Sign Program

Project Location

Guasti Road
Ontario, CA 91761

asi > modulex

5849 Uplander Wa
Culver City, CA 9023
310/645-140
310/645-9877 Fa
www.asimodulx.com

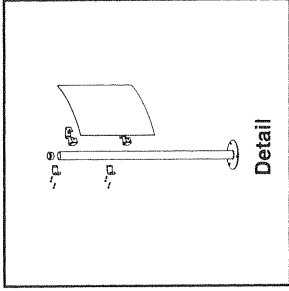
These drawings involve confidential, proprietary rights of ASI Sign Systems and all design, manufacturing, reproduction, use and so rights regarding the same are expressly reserved. These drawings are submitted under a confidential relationship for a specific purpose and the recipient, by accepting this document, assumes the responsibility for its use. ASI Sign Systems does not warrant, reproduce in whole or in part, nor its contents revealed in any manner or to any person except to meet the purpose for which was delivered and (b) that any special features peculiar to the design will not be incorporated into other project

Project Data

Date: 09.27.
Scale: 1/
Drawn by:
Checked by:
Revision
00/00/
00/00/
00/00/

Sign Type
AP & AV

Page 5.



Specification:

Accessible Parking Signs

(1) 1 Sided 12"(h) x 12"(w) Pacific™ Exterior

Series Graphic Panel with Vinyl Graphics

Background Color: MX-66 Blue

Imprint Color: SC-901 White

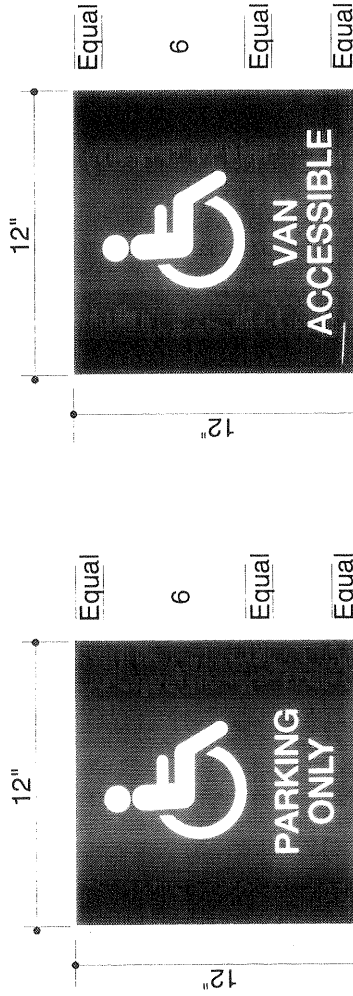
Pole: MX-16 Dusted Steel

Typestyle: Helvetica Medium

Type Size: 1"(h)

Mounting/Location:

Direct Burial in Softscape



Sign Type
AP

Direct Burial in Softscape

Sign Type
AV

Direct Burial in Softscape

80 Minimum

80 Minimum

Project

AIRPORT
corporate
centre@centrelake

Airport Centre @ Centrelake

Sign Program

Project Location

Guasti Road
Ontario, CA 91761

asi > modulex

5849 Uplander Wa
Culver City, CA 9023
310/645-140
310/645-9877 Fa
www.asimodullex.com

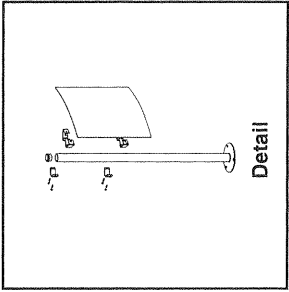
These drawings involve confidential proprietary rights of ASI Sign Systems and all design, manufacturing, reproduction, use and sale of the drawings are restricted to the recipient. The recipient is not to be substituted under a confidential relationship for a specific purpose and the recipient, by accepting this document, assumes custody and agrees (a) that this document will not be copied, modified, distributed or in part, nor its contents revealed in a manner other than that authorized by ASI Sign Systems. (b) that any special features peculiar to this design will not be incorporated into other projects.

Project Date

Date: 09.27.
Scale: 3/3
Drawn by:
Checked by:
Revision
00/00/
00/00/
00/00/

Sign Type
AW

Page 5.1



Specification:

Accessible Site Entrance Warning Signage

(2) 24"(h) x 24"(w) Pacific™ Exterior Series

Graphic Panel with Vinyl Graphics and Post

Background Color: MX-66 Blue

Imprint Color: SC-901 White

Pole: MX-16 Dusted Steel

Typestyle: Helvetica Medium

Type Size: 1"(h)

Mounting/Location:

Direct Burial in Softscope



Direct Burial in Softscope

Project

AIRPORT
corporate
centre@centrelake

Airport Centre @ Centrelake

Sign Program

Project Location

Guasti Road
Ontario, CA 91761

asi> modulex

5849 Uplander Wa
Culver City, CA 9023
310/645-140
310/645-9877 Fa
www.asimodulex.com

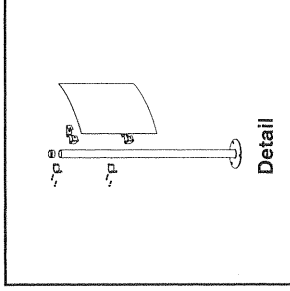
These drawings involve confidential, proprietary rights of Asi Sig Systems and all design, manufacturing, production, use and sale information contained herein is confidential. All drawings and specifications are submitted under a confidential relationship for a specific purpose and the recipient, by accepting this document, assumes custody and agrees (a) that this document will not be copied, reproduced, or otherwise disseminated in any form or by any means, in whole or in part, without the prior written consent of Asi Sig Systems, Inc. in the manner of no one person, except to meet the purpose for which design was delivered and (b) that any special features peculiar to the design will not be incorporated into other projects.

Project Date

Date: 09.27.1
Scale: 1/
Drawn by:
Checked by:
Revisor
11/02/1
00/00/1
00/00/1

Sign Type
09

Page 5.3



Specification:

Parking Directional

Pacific™ Exterior Series to Include:

- (1) 4-3/4"(h) x 24"(w) Graphic Panel
- (1) 1"(h) x 24"(w) Panel
- (1) 24"(h) x 24"(w) Graphic Panels With Vinyl Graphics

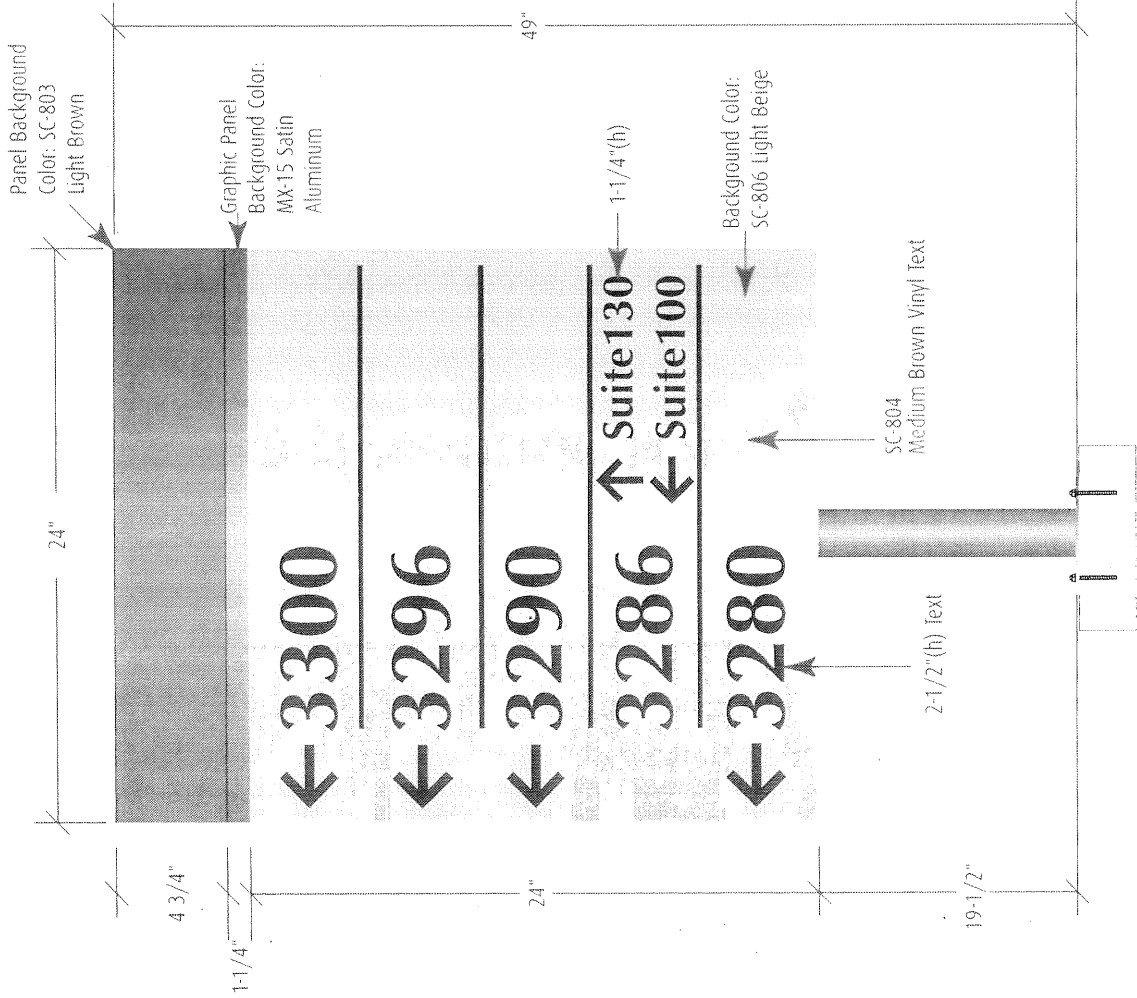
Background Color: Refer to Drawing

Pole: MX-16 Dusted Steel

Typestyle: Optima Bold

Mounting:
Base Plate Mount

Refer to Drawing for Text and Graphics Colors



Project

AIRPORT
corporate
centre@centrelake

Airport Centre @ Centrelake

Sign Program

Project Location

Guasti Road
Ontario, CA 91761

asi > modulex

5849 Uplander Wa
Culver City, CA 90231
310/645-1400
310/645-9877 Fa.
www.asimodulux.com

These drawings involve confidential proprietary rights of ASI Sign Systems and all design, manufacturing, reproduction, use and sale rights regarding the same are expressly reserved. These drawings are submitted under a confidential relationship for a specific project and shall remain the property of ASI Sign Systems. ASI Sign Systems and agrees (a) that this document will not be reproduced in whole or in part, nor its contents revealed in any manner or to any person except to meet the purpose for which was delivered and (b) that any special features peculiar to this design will not be incorporated into other projects

Project Data

Date: 09.27.1
Scale: 3/3.
Drawn by:
Checked by:
Revision
00/00/1
00/00/1
00/00/1

Sign Type
CN



Specification:

Canopy Exterior Address Numbers

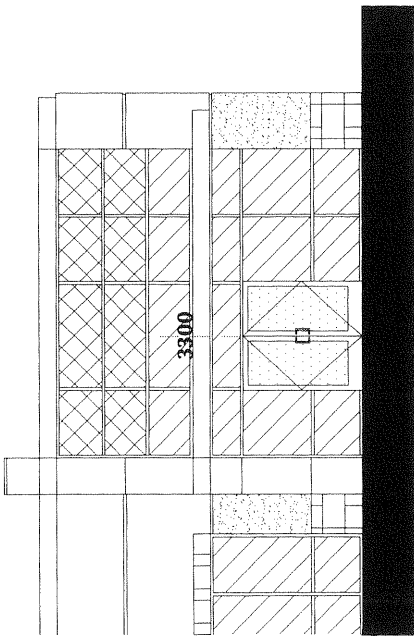
Construction & Size:

Fabricated Aluminum Letters

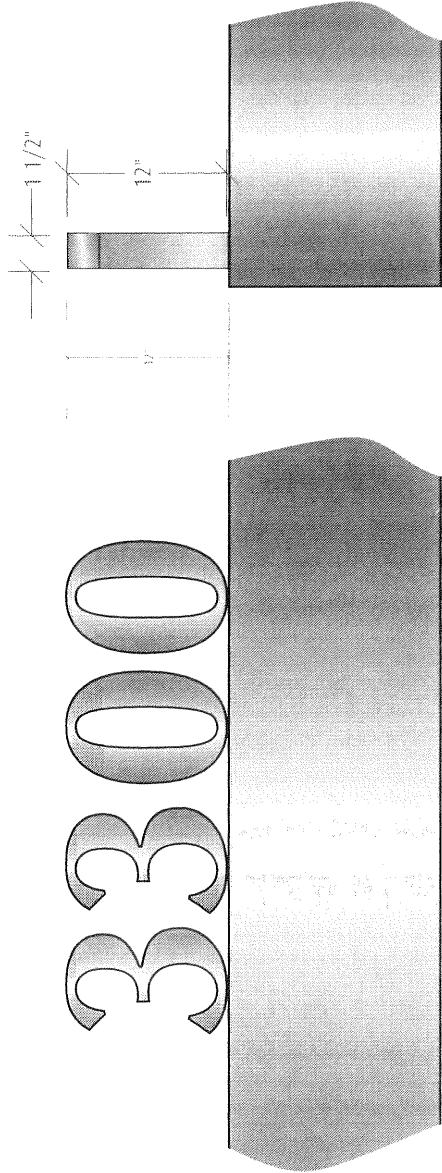
Typestyle: Optima Bold 12"(h) x 1-1/2"(t)

Mounting/Location:

Bottom Pin Mounted



Detail



Canopy

Project

AIRPORT
corporate@centrelake

Airport Centre @ Centrelake

Sign Program

Project Location

Guasti Road
Ontario, CA 91761

asi > modulex

5849 Uplander Wa
Culver City, CA 9023
310/645-140
310/645-9877 Fa
www.asimodulex.com

These drawings involve confidential proprietary rights of ASI Sign Systems and all design, manufacturing, reproduction, use and sale rights regarding the same are expressly reserved. These drawings are submitted under a confidential relationship for a specific project and are not to be used, copied, reproduced, or otherwise disclosed in any manner without the express written consent of ASI Sign Systems. ASI Sign Systems and its employees, agents, and subcontractors shall retain all copyright and other intellectual property rights in and to the design, drawings, and specifications. ASI Sign Systems shall not be held liable for any reproduction in whole or in part, nor its contents revealed in any manner or to any person except to meet the purpose for which was delivered and (b) that any special features peculiar to the design will not be incorporated into other project

Project Data

Date: 09.27.1

Scale: 1/

Drawn by:

Checked by:

Revisor

00/00/

00/00/

00/00/

Sign Type

V1

Page 5.1

Specification:

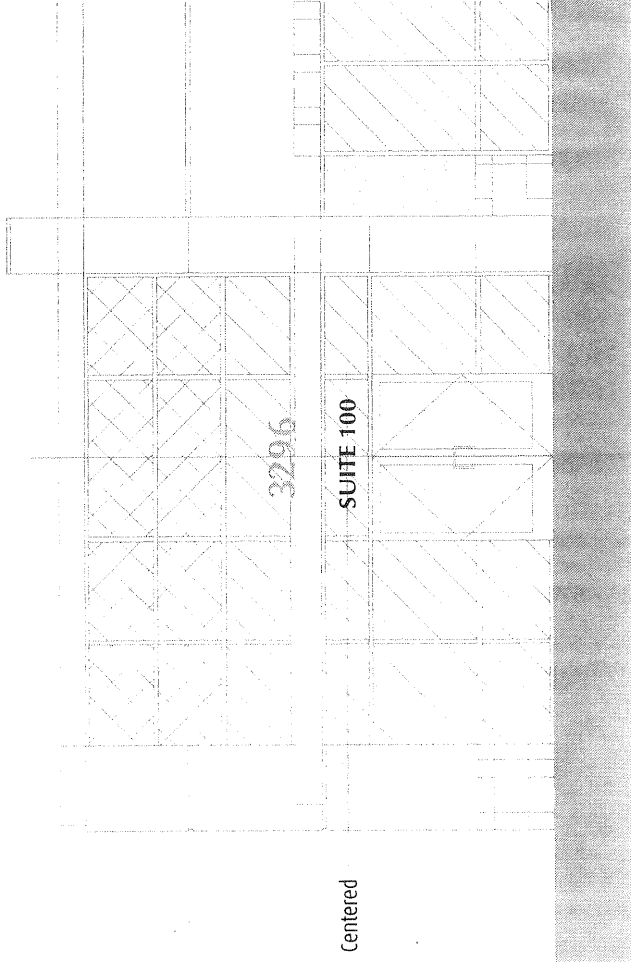
Suite Vinyl Letters

5"(h)LTV Vinyl Letters

Color: White

Typestyle: Optima Bold

Mounting: First Surface Direct to Glass



SUITE 100

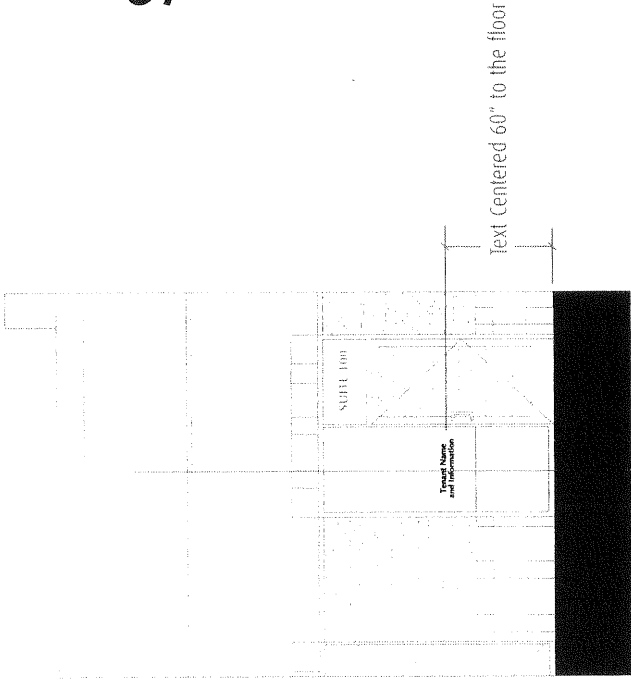
Detail Not to Scale

Centered

5"

Specification:

Suite Vinyl Letters
2" (h) LTV Vinyl Letters
Color: White
Typestyle: Optima Bold
Mounting: First Surface Direct to Glass



asi > modulex

5849 Uplander Wa
Culver City, CA 9023
310/645-140
310/645-9877 Fa
www.asimodulex.com

These drawings involve confidential, proprietary rights of ASI Systems and all design, manufacturing, reproduction, use and sale rights regarding the same are expressly reserved. These drawings are submitted under a confidential relationship for a specific project and are not to be used, copied, reproduced, or otherwise disseminated without the express written consent and approval of ASI. ASI does not warrant that the information reproduced in whole or in part, nor its contents revealed in any manner or to any person except to meet the purpose for which was delivered and (b) that any special features peculiar to the design will not be incorporated into a later project.

Project Data

Date: 09.27.
Scale: 1/
Drawn by:
Checked by:
Revision
00/00/
00/00/
00/00/

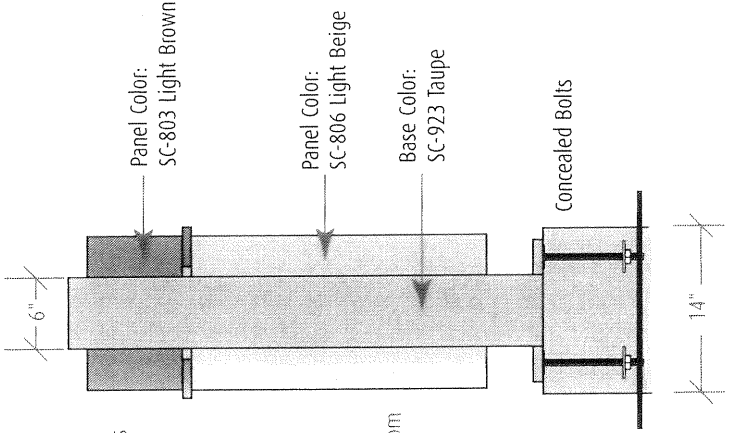
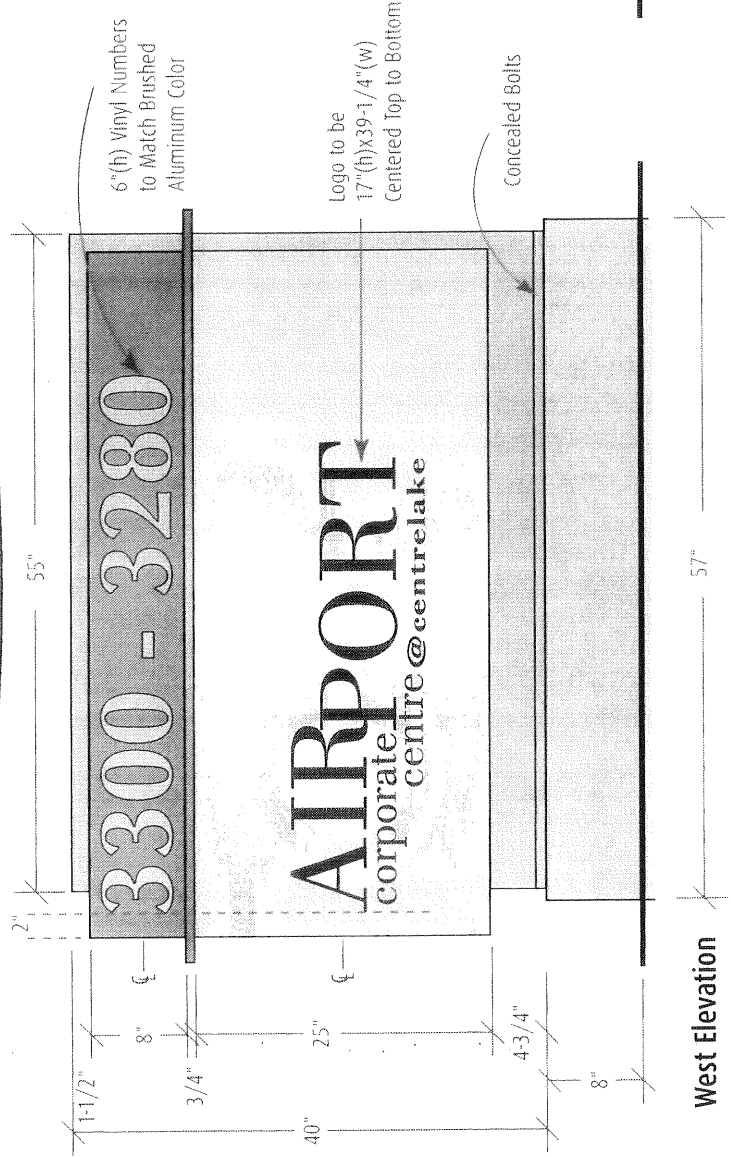
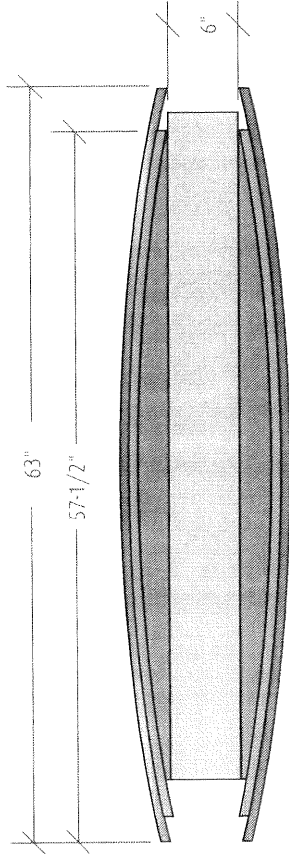
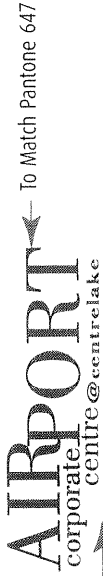
Sign Type
V7

Tenant Name and Information

Specification:

Secondary Building Identification South West Side Driveway

- 2 Sided Custom Built Monument Sign to include:
- (1) 8"(h) x 57"(w) x 14" deep concrete base.
 - (2) 31-3/4"(h) x 57-1/2"(w) x 1" deep brakeformed aluminum cabinet to be painted MAP to match SC-803, Light Brown and SC-806, Light Beige as illustrated
 - (2) 3/4" x 3/4" Aluminum tube to be painted MAP Brushed Aluminum #41-342
 - (1) 40"(h) x 55"(w) x 6" deep fabricated Aluminum base to be painted MAP to match SC-923, Taupe
 - (2) 6"(h) Sets Vinyl Numbers to Match Brushed Aluminum
- Color:** Refer to Drawing
Logo Color: Refer to Drawing
Typestyle: Optima Bold (for Address Number)
Mounting/Location: Baseplate Mounted



Project

AIRPORT
corporate
centre@centrelake

Airport Centre @ Centrelake

Sign Program

Project Location

Guasti Road
Ontario, CA 91761

asi modulex

5849 Uplander Way
Culver City, CA 90231
310/645-1401
310/645-9877 Fax
www.asimodullex.com

These drawings involve confidential proprietary rights of ASI SIG Systems and all design, manufacturing, reproduction, use and sale rights reserved. No part of these drawings may be reproduced, stored in a retrieval system, or transmitted in any form or by any means, electronic, mechanical, photocopying, recording, or otherwise, without the prior written consent of ASI SIG Systems and the recipient, by accepting this document, assume responsibility in whole or in part, nor its contents revealed in any form or by any means, electronic, mechanical, photocopying, recording, or otherwise, that any special features incorporated in this design will not be incorporated into other projects.

Project Data

Date: 09.27.
Scale: 1/16" =
Drawn by:
Checked by:
Revision
11/02/05, 11/14/00/00/
00/00/00/00/

Sign Type
B.2

Page 5.7

Project



Airport Centre @ Centrelake

Sign Program

Project Location

Guasti Road
Ontario, CA 91761

asi> modulex

5849 Uplander W.
Culver City, CA 90230
310/645-1414
310/645-9877 F.
www.asimodulex.com

These drawings involve confidential proprietary rights of ASI Systems and all design, manufacturing, production and installation rights regarding the same are expressly reserved. These drawings are submitted under a confidential relationship for a specific purpose and the recipient, by accepting this document, assumes responsibility for its use. ASI Systems and its design team shall not be held liable for any errors or omissions in this document, reproduced in whole or in part, nor its contents, revealing information or to any person except to meet the purpose for which it was delivered and (b) that any special features peculiar to a design will not be incorporated into other projects.

Project Data

Date: 09.27
Scale: 1/16" = 1'-0"
Drawn by: [Name]
Checked by: [Name]
Revised: 11/02/05, 11/07/05, 11/14/00/00,
00/00,

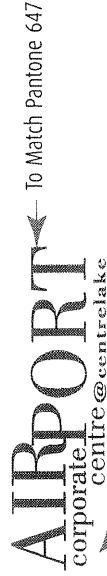
Sign Type

B.1

Specification:

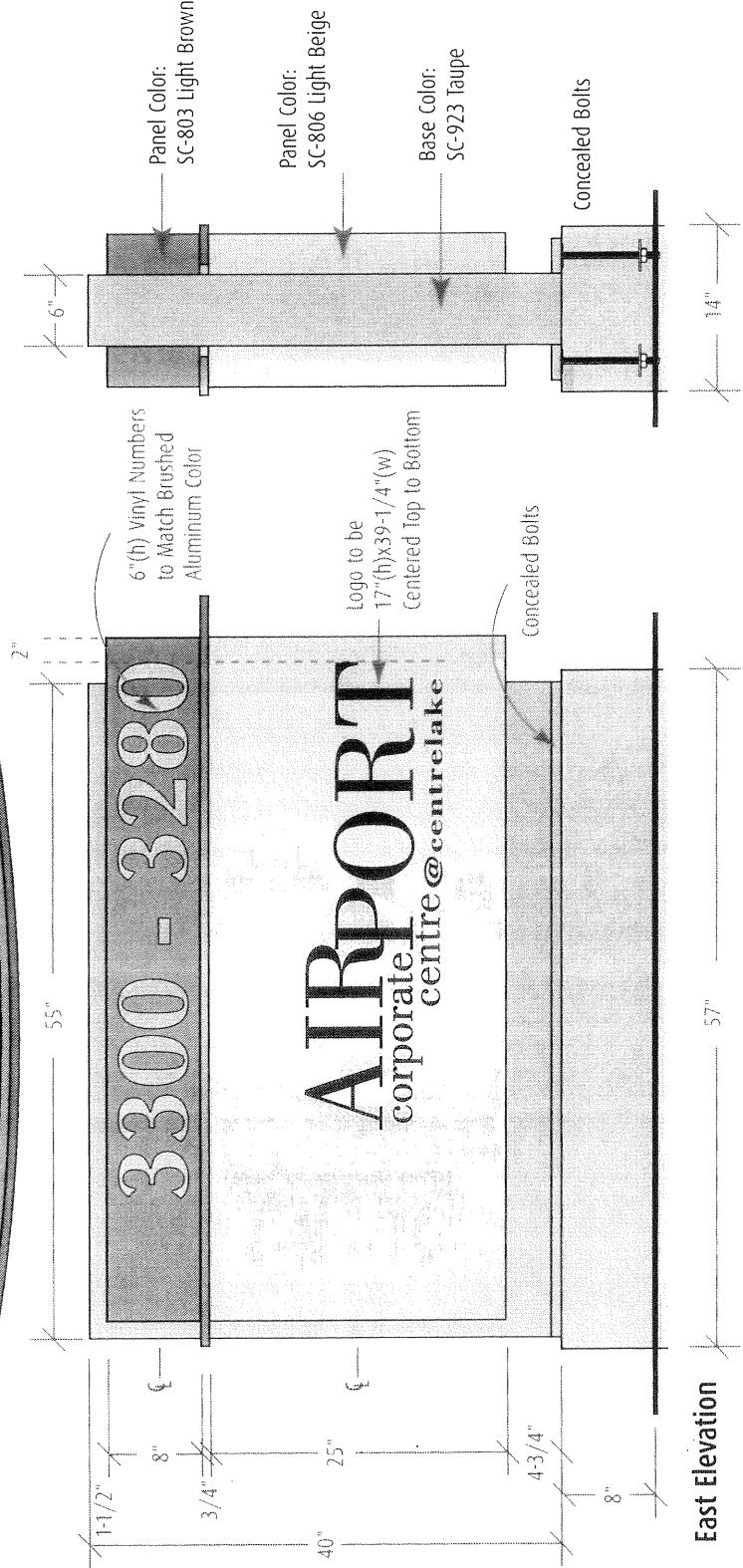
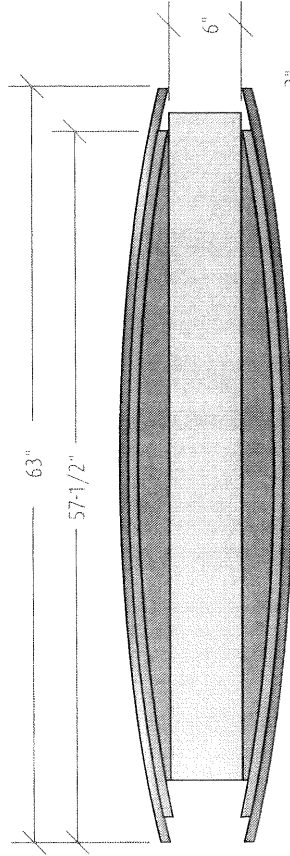
Secondary Building Identification South West Side Driveway

- 2 Sided Custom Built Monument Sign to include:
 - (1) 8"(h) x 57"(w) x 14" deep Concrete base.
 - (2) 31-3/4"(h) x 57-1/2"(w) x 1" deep brakeformed aluminum cabinet to be painted MAP to match SC-803, Light Brown and SC-806, Light Beige as illustrated
 - (2) 3/4" x 3/4" Aluminum tube to be painted MAP Brushed Aluminum #41-342
 - (1) 40"(h) x 55"(w) x 6" deep fabricated Aluminum base to be painted MAP to match SC-923, Taupe
 - (2) 6"(h) Sets Vinyl Numbers to Match Brushed Aluminum
- Color:** Refer to Drawing
- Logo Color:** Refer to Drawing
- Typestyle:** Optima Bold (for Address Number)
- Mounting/Location:** Baseplate Mounted



To match Pantone 427

To Match Pantone 647



East Elevation

Specification:

Secondary Building Identification South East Side Driveway

- 2 Sided Custom Built Monument Sign to include:
- (1) 18"(h) x 57"(w) x 10" deep Concrete base.
- (1) 8"(h) x 55"(w) aluminum cabinet to match SC-923, Taupe
- (1) 6"(h) Sets Vinyl Numbers to Match Brushed Aluminum

Typestyle: Optima Bold (for Address Number)

Mounting/Location:

Project

AIRPORT
corporate
centre@centrelake

Airport Centre @ Centrelake

Sign Program

Project Location

Guasti Road
Ontario, CA 91761

asi> modulex

5849 Uplander We
Culver City, CA 9023
310/645-140
310/645-9877 Fx
www.asimodulex.com

These drawings involve confidential proprietary rights of ASI Systems and all design, manufacturing, reproduction, use and distribution rights are expressly reserved. These drawings are to be used for the specific project and for the sole purpose and the recipient by accepting this document, assumes custody and agrees (a) that this document will not be copied, reproduced in whole or in part, nor its contents revealed in a manner to any person except to the extent necessary to complete the design and construction of the project. (b) that the design will not be incorporated into other projects.

Project Date

Date: 09.27

Scale: 1/16 =

Drawn by

Checked by:

Revision

11/02/05, 11/07/

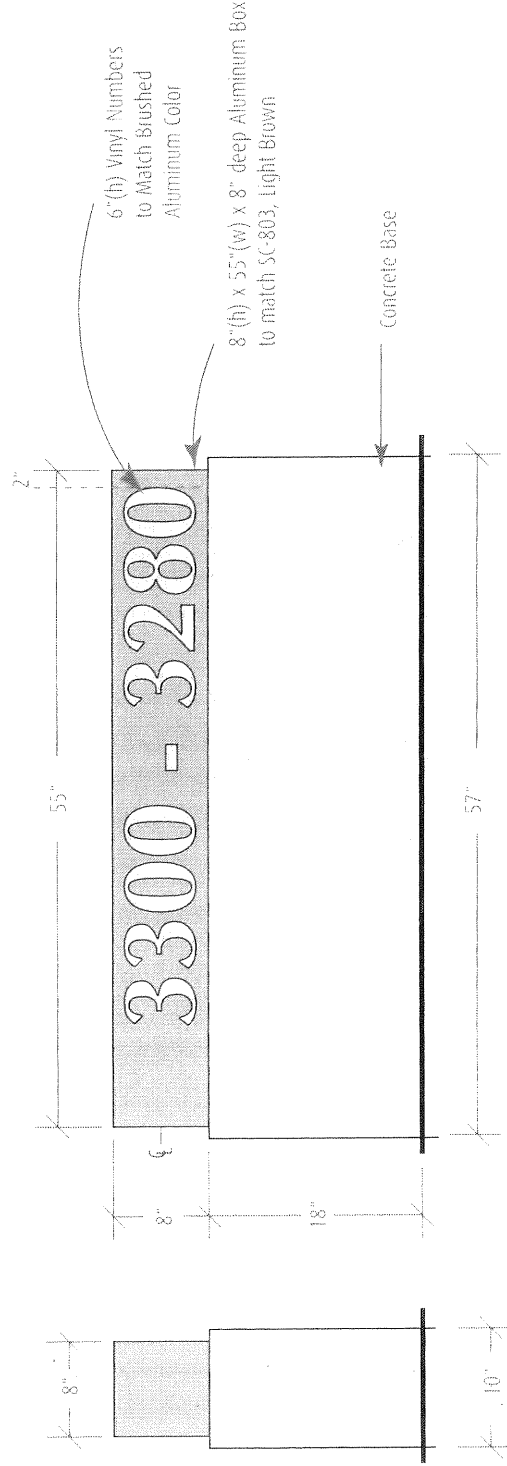
00/00,

00/00,

Sign Type

B.1

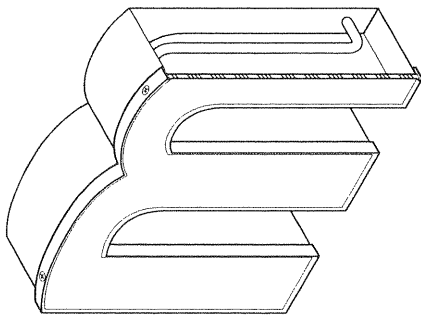
Page 5.



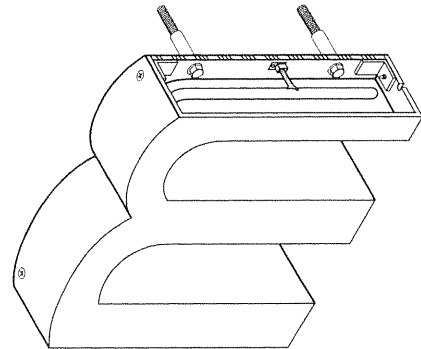
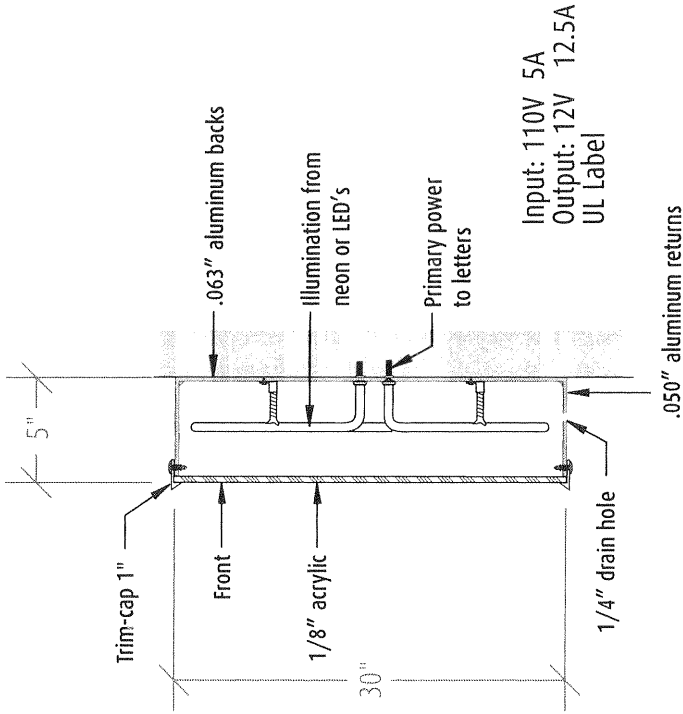
East Elevation

Please refer to page 2.1 - 2.3 for requirements and specifications.
See pages 4.1 - 4.8 for location of these signs

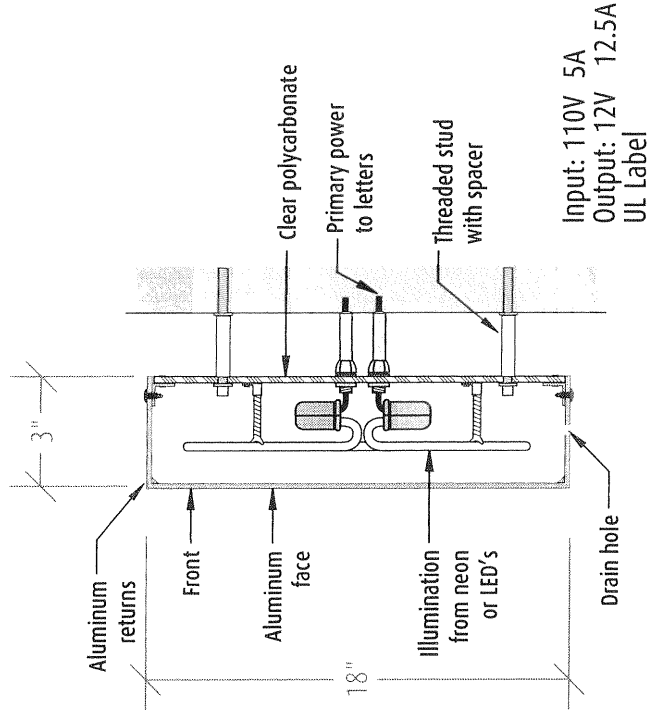
3 story Primary tenant signs may use face lit signs subject to approval by Landlord and the Centrelake Design Committee.



Face Lit Channel Letters



Reverse Lit Channel Letters



Project

AIRPORT
corporate
centre@centrelake

Airport Centre @ Centrelake

Sign Program

Project Location

Guasti Road
Ontario, CA 91761

asi modulex

5849 Uplander W
Culver City, CA 90230
310/645-1414
310/645-9877 F
www.asimodulex.co

These drawings involve confidential proprietary rights of ASI SI Systems and all design, manufacturing, reproduction, use and similar rights regarding the same are expressly reserved. These drawings are prepared for the sole use of the recipient for a specific purpose and the recipient, by accepting this document, agrees to indemnify and agrees (a) that this document will not be copied, reproduced, in whole or in part, nor its contents revealed in a manner to any person except to meet the purpose for which mentioned in this document, and (b) that the recipient will not incorporate this design into other projects.

Project Data

Date: 09.27
Scale: 1
Drawn by:
Checked by:
Revisio
00/00/
00/00/
00/00/

Sign Type
Primary Tenant Lit