

SIGN PLAN COVER SHEET

TO BE COMPLETED BY PLANNER:

SIGN PLAN NO. 89-98 RELATED ITEMS File No. 3750-S
 SIGN ADDRESS (include N, S, E, W) 1548-1550 So. ARCHIBALD
 RECEIVED BY P.K. DATE 6/30/89

TO BE COMPLETED BY APPLICANT:

OWNER Trammell Crow Company TELEPHONE (714) 983-1221
 MAILING ADDRESS 2143 East "D" Street, Suite 170
 CITY, STATE, ZIP Ontario, California 91764
 REPRESENTATIVE Michael D. Litwin TELEPHONE (714) 983-1221
 MAILING ADDRESS 2143 East "D" Street, Suite 170
 CITY, STATE, ZIP Ontario, California 91764

BACKGROUND INFORMATION

ZONE: M-2 EUCLID OVERLAY DISTRICT? YES NO
 FRONTAGE: SITE: 687.90" BUILDING/TENANT SPACE: Building 1 911.30'
 SIDE FRONTAGE (CORNER LOT): SITE: 1045.93' BLDG/SPACE: Building 2 484.00'
 REAR (PUBLIC ENTRANCE FROM ALLEY/PARKING LOT): None
 SITE/SURROUNDING PROPERTY CONDITIONS: Project at corner fronting Archibald Avenue at Mission Boulevard in an area zoned industrial.

PROPOSED/EXISTING SIGNS

	WALL (s.f.)	FREESTANDING (s.f.) (height)	OTHER (Master ID, Freeway, etc.)
EXISTING SIGNS			
PROPOSED SIGNS	A. 15 s.f. total B. Variable	c. 23.67 s.f. 4'-0"	D. 17.5 s.f. 4'6" high
CODE LIMITS			

PROPOSED SIGN LOCATION NOTES: A. Building Address Numbers.
B. Tenant Identification Signs
C. Tenant Directory Sign (free-standing)
D. Entry Project ID Monument Sign

ACTION

COUNTER	PLANNING COMMISSION
DATE: <u>6/30/89</u>	MEETING DATE: _____
ACTION: <u>Approved</u>	ACTION: _____
PLANNER: <u>P.K.</u>	

AIRPORT CENTER SOUTH SIGN PROGRAM

A. Building Address Numbers

Description: 12" high by 3" thick polystyrene foam numbers with 1/8" thick acrylic faces; edges sealed, textured, and painted. Mount flush to painted building wall with adhesive. Copy for building one is: 1550-1590; copy for building two is: 1500-1548. Color is dark blue, Frazee #5095N. See attached Sketch A-1 for depiction of font and copy, Sketches A-2, A-3 for building elevations. The print font is Helvetica Medium.

B. Tenant Identification Signs

Description: 3" (face) by 4" (depth) extruded tubular aluminum frame with dark blue (Frazee #5095N) powdercoat paint finish to match window mullions. Frame and tenant sign panel of 3/4" M.D.O. with 1/4" sintra backing permanently mounted to building facade. Overall size 30" high by 10'-2" wide.

Tenant name panel of 1/4" sintra mounts into frame assembly and is interchangeable. The background color is light gray Frazee #5440W, and the logo and text size is 10 inches. Tenant may use project standard identification, featuring dark blue Frazee #5095N Helvetica Medium text 10" high.

The graphic design of the sign shall not include the product sold, except as part of Tenant's trade name or logo. Logos, which are not permitted to be more than 20% of the sign face copy, will be considered on a case by case basis, at the discretion of the Landlord subject to the approval of the City of Ontario Planning Department. Logo color shall be Frazee blue #5095N except that tenants with nationally recognized colors may use such, subject to approval by the Landlord and the City of Ontario. A 1/2" Frazee #5041W light blue accent border around the light gray sign field will provide an offset from the dark blue frame. See Sketch B-1 for the sign design.

The entire framed unit is to be mounted on center over recessed "storefront" tenant entries with bottom of unit 3'-0" above the top of the tenant entry. For an elevation view, see Sketch B-2.

Along the Archibald Avenue side of each building, signs to be centered approximately 28 feet above finished landscape grade against building, centered in the third and fourth tilt-up panels back from glass and mullion cut-out panels. For Building 1 elevation, see Sketch A-2; for Building 2 elevation, see Sketch A-3.

C. Post and Panel Monument Tenant Listings

Description: Fabricated aluminum sign cabinet supported by two (2) 6" x 6" structural steel posts, powder-coated dark blue Frazee #5095N to match window mullions. Sign face features 5-color silkscreened project logo, and inlay design for twelve (12) 2-3/8" x 32" acrylic directory strips. Tenant name and address number to be listed in 1.75" white letters in Helvetica Medium font against dark blue Frazee #5095N background. Silkscreened project logo, in shades of blue, gray, white, and black. Trammell Crow Company logo across bottom of sign field. See Sketches C-1, C-2.

Structural

Calculations: See attached calculation sheets C-3.


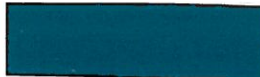
D. Entry Monument Sign

Description: The Airport Center South logo and letters inlaid into concrete, then painted in project colors of light blue, dark blue, white, gray, and black. Sign to be formed 1" and 1-1/2" deep into wall. Overall dimensions are approximately 2'-6" high by 3'-6" wide. For elevation view, see attached Sketch D-1.

E. Project and Sign Program Colors

<u>Color</u>	<u>Frazee Number</u>	<u>Sample</u>
Light Gray	5440 W	
Dark Gray	5441 W	
Light Blue	5041 W	
Medium Blue	5043 M	
Dark Blue	5095 N	

Trammell Crow Logo Colors

		<u>Sample</u>
Light Blue	PMS 312 C	
Dark Blue	PMS 302 C	

F. Sign Locations

The two drawings attached depict the locations of free standing signs for Airport Center South.

The project's two free-standing signs are proposed to be located on either side of the project entry at 1500 South Archibald Avenue. The project identification sign, embedded in the screen wall, is on the north side, and the tenant directory sign is located at the edge of the landscaped area on the south side.

Drawing F-1 shows the plan view location of the two free-standing signs at the Archibald Avenue entry. The blue line drawing F-2 shows approximate locations of all project signage.

SIGN CRITERIA

AIRPORT CENTER SOUTH Ontario, California

PART 1 - GENERAL

- 1.1 Required Tenant's signage shall be constructed and installed at Tenant's expense.
- 1.2 Tenant shall employ a sign and graphics specialist to prepare shop drawings and samples, manufacture, fabricate, assemble and install the Tenant signage. Tenant's sign company shall carry workmen's compensation and public liability insurance against all damage suffered or done to any and all persons and/or property while engaged in the construction or erection of signs in the amount of Five Hundred Thousand Dollars (\$500,000), or as provided by current ordinance combined single limit. Landlord shall be presented with reasonable evidence of such coverage prior to commencement of any sign construction work. Tenant shall indemnify Landlord and hold Landlord harmless from all cost, liability, damages and expense including attorneys fees and costs, incurred by Landlord as a result of any sign construction or installation work by Tenant or its contractors. Tenant shall be fully responsible for the work of its sign contractors.
- 1.3 Tenant will supply all camera-ready artwork to the contracted sign and graphics specialist at Tenant's expense.
- 1.4 Signs installed and not approved by Trammell Crow Company will be subject to removal, and all labor and material used to remedy the problem will be billed to the Tenant.
- 1.5 If a situation arises that is not covered by these sign standards or there is ambiguity of those standards, Trammell Crow Company will make a determination.

PART 2 - SUBMITTALS AND RESPONSIBILITIES

- 2.1 Tenant shall submit to Trammell Crow Company three (3) sets of detailed drawings indicating the location, design and colors for the proposed sign(s). This will include typography, construction detail and graphics for review and approval, prior to fabrication. One copy of such drawing of Tenant's proposed signs shall be colored.

- 2.2 Tenant will assume responsibility for the quality of materials and workmanship required for the execution of the Tenant required signage.
- 2.3 Tenant shall require the contracted sign company to guarantee all materials and workmanship for a period of one (1) year after the final acceptance of the work. During this one (1) year period, if any defects or faulty materials are found, immediately upon notification by Trammell Crow Company, Tenant shall proceed, at Tenant/contracted sign company expense, to remedy the condition together with any damage to the surrounding finishes or furnishings occurring as a result of the defect.
- 2.4 Tenant will be responsible for obtaining, at Tenant's expense, all required building permits from the City for signs attached to the building.
- 2.5 City Approval and Permits:

Upon written approval by the Landlord, Tenant shall secure a sign permit from the City of Ontario Planning Department by bringing three (3) copies of the following drawings to that department for its approval:

- a. A site plan showing the location of the lease space on the office building site.
- b. An elevation of the building showing sign placement and lease space width.
- c. An elevation of the sign showing all colors, materials, dimensions and copy, and including installation details.

In no event shall Tenant attempt to secure a sign permit from the City of Ontario Planning Department until Tenant has received written approval from Landlord that Tenant's proposed signage is satisfactory to Landlord and in conformance with the required sign criteria.

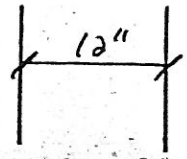
PART 3 - SIGNAGE RESTRICTIONS

- 3.1 All signs shall be attached to the Building only at a location specified by Landlord and approved by the City of Ontario Planning Department. Signs perpendicular to the face of the building are prohibited.
- 3.2 Signage of glass store fronts or alarm wiring are prohibited.

- 3.3 The graphic design of the sign shall not include the product sold, except as part of Tenant's trade name or logo. Logos, which are not permitted to be more than 20% of the sign face copy, will be considered on a case by case basis, at the discretion of the Landlord subject to the approval of the City of Ontario Planning Department. Logo color shall be dark blue except that tenants with nationally recognized colors may use such, subject to approval by the Landlord and the City of Ontario.
- 3.4 No labels will be permitted on the exposed surface of signs except those required by local ordinance, which shall be applied in an inconspicuous location.
- 3.5 Alarm boxes are to be located at inconspicuous areas, such as under soffits.
- 3.6 Colors: Sign colors are restricted to the following:
- Frame - Dark Blue Frazee #5095N
 - Background - Gray Frazee #5440W
 - Edges>Returns - Light Blue Frazee #5041W
 - Graphics - Dark Blue Frazee #5095N except that Tenants with nationally recognized colors may use such, subject to approval of the Landlord and the City of Ontario Planning Department.
- If Tenant has no logotype or symbol, the typeface used must be Helvetica Medium 10".
- 3.7 The size of the sign is to be maintained within an area of 10'-2" x 2'-6" with a 3" return. No variation in size is allowed. The maximum area allowed for Tenant graphics is 9'-0" x 1'-6".
- 3.8 Materials:
- Sign: Anodised aluminum
 - Paint: Frazee or equivalent industrial paint
 - Graphics: Blue vinyl or silkscreen
 - Fasteners: No exposed fasteners
- 3.9 Signs are not to be placed on architectural wall surfaces, such as exposed aggregate concrete.
- 3.10 Compliance with Code: All signs and the installation thereof shall comply with all local building and electrical codes.
- 3.11 Lighting: All signs will be non-illuminated.

PART 4 - EXECUTION AND INSPECTION

- 4.1 Trammell Crow Company will inspect condition of locations and surfaces on which signs will be installed prior to installation, after which Trammell Crow Company will authorize installation of Tenant required signage.
- 4.2 Trammell Crow Company will conduct a walk-through of the completed signs for evidence of damage to surrounding area and surfaces. If damage is evident, refer to item 2.3.



15000 - 1548

1550 - 1590

MATERIAL: 12" HIGH X 3" THICK POLYSTYRENE FORM (EDGES SOULED, TEXTURED, PAINTED) WITH 1/8" ACRYLIC FACCS. PAINT TO CONTRAST WITH BUILDING FACADE.



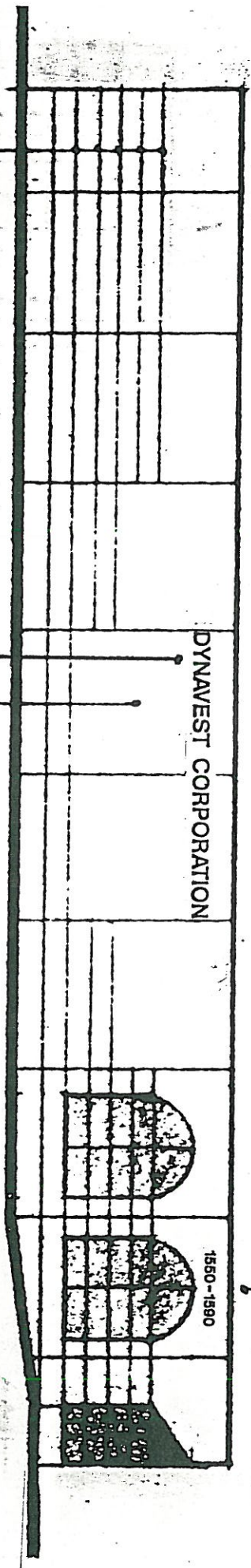
clarke & associates
1607 E EDINGER D. SANTA ANA, CA.

TITLE:
ADDRESS NUMBERS

PROJECT	1550000L CREW - ONTARIO	DATE	11/8/88
SCALE	3/4" = 1'-0"		
APPROVED BY			

ADDRESS NUMBERS:

MATERIAL: 1 1/2" HIGH X 3" THICK POLYSTYRENE FOAM (EDGES SEALED, TEXTURED, PAINTED) WITH 1/8" THICK POLYVIC FIBER. PAINT TO CONTRAST WITH BUILDING FACADE.



1/2" SCORE LINES

PRECAST CONC. PNL. WALL, PAINTED-TYP.

DIMENSIONAL LETTERS: 2 1/4" HIGH X 3" THICK POLYSTYRENE FOAM (EDGES SEALED, PAINTED, TEXTURED). HELVETICA MEDIUM CAPS LETTER STYLE. FACES & EDGES PAINTED DARK BLUE #5095N TO MATCH BLDG. MILLIONS.

EAST ELEVATION

BUILDING NO. 1 1550-1590



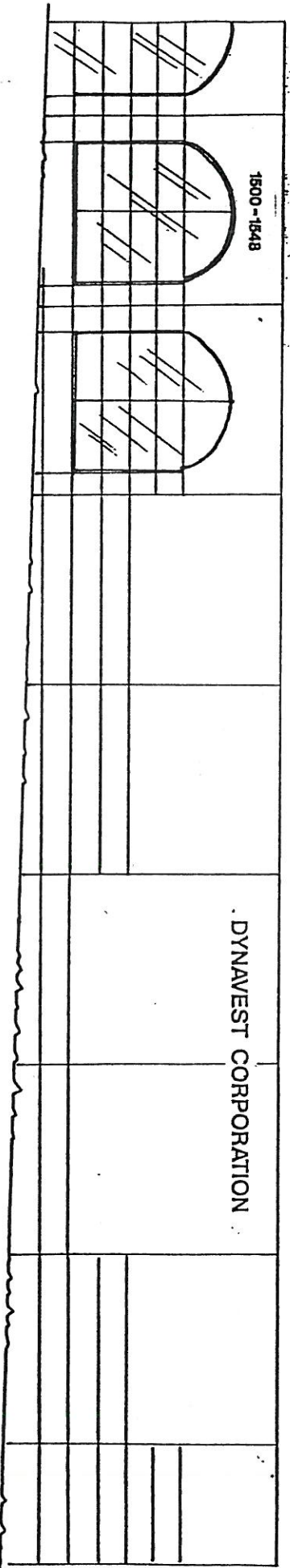
Clarke & Associates
1607 E EDINGER D. SANTA ANA, CA.

TITLE:

MASTON TOWNHNT I.D. SIGN

PROJECT	Alexander Centre South City
SCALE	1" = 20 FT.
DATE	DEC 12 1988
APPROVED BY	TCC-ONTARIO

ADDRESS NUMBERS: MATERIAL: 1 1/2" HIGH X 3" THICK POLYSTYRENE FOAM (EDGES SEALED, TEXTURED, PAINTED) WITH 1/8" ACRYLIC FACES, PAINT TO CONTRAST WITH BUILDING FACADE.



DIMENSIONAL LETTERS: 2 1/4" HIGH X 3" THICK POLYSTYRENE FOAM (EDGES SEALED, PAINTED, TEXTURED). HELVETICA MEDIUM CAPS LETTER STYLE. FACES & EDGES PAINTED DARK BLUE #5095N TO MATCH BLDG. MULLIONS.

EAST ELEVATION
BUILDING NO. 2 1500-1548

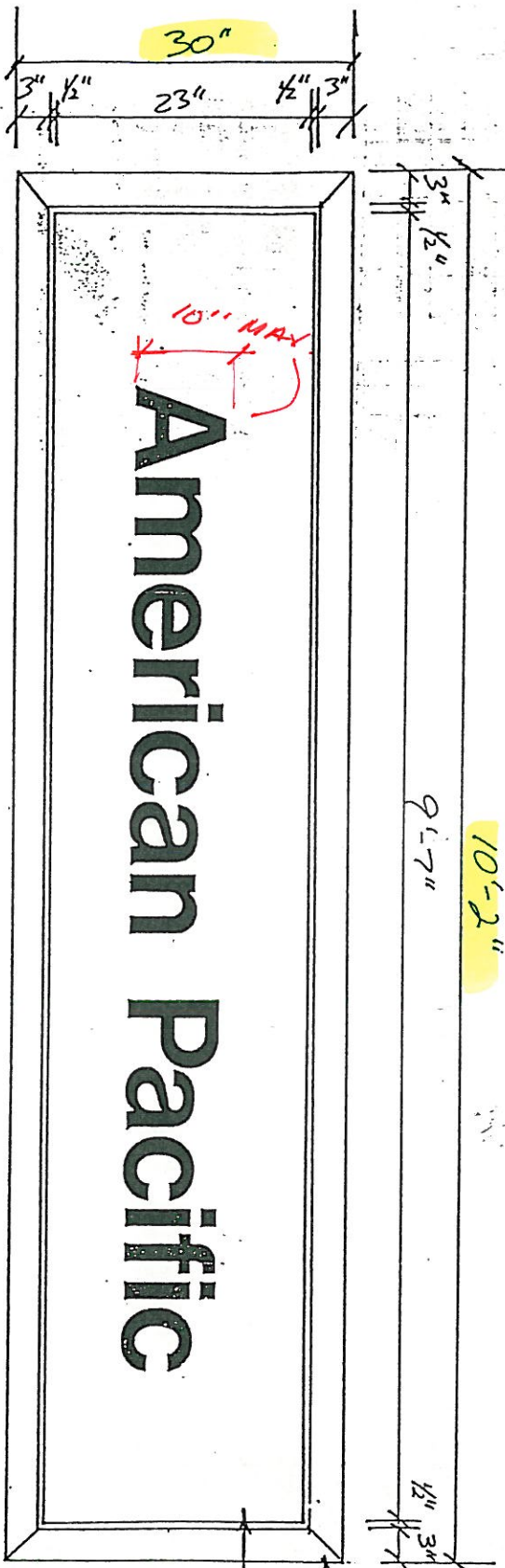
clarke & associates
1807 E EDINGER D., SANTA ANA, CA.

TITLE:
MAJOR REFRONT I.D. SIGN

PROJECT: ALKABER CENTER SOUTH CLINTON
SCALE: APPROX 1" = 20 FT. DATE: DEC 12 1988
APPROVED BY: TCC-ONTARIO

SKETCH A-4
HELVETICA MEDIUM
FONT SAMPLE

Helvetica Medium
abcdefghijklmnopqrstuvxyz
ABCDEFGHIJKLM
NOPQRSTUVWXYZ
0123456789 ®!“#\$%&’°()”+¢£:~=-;/,.



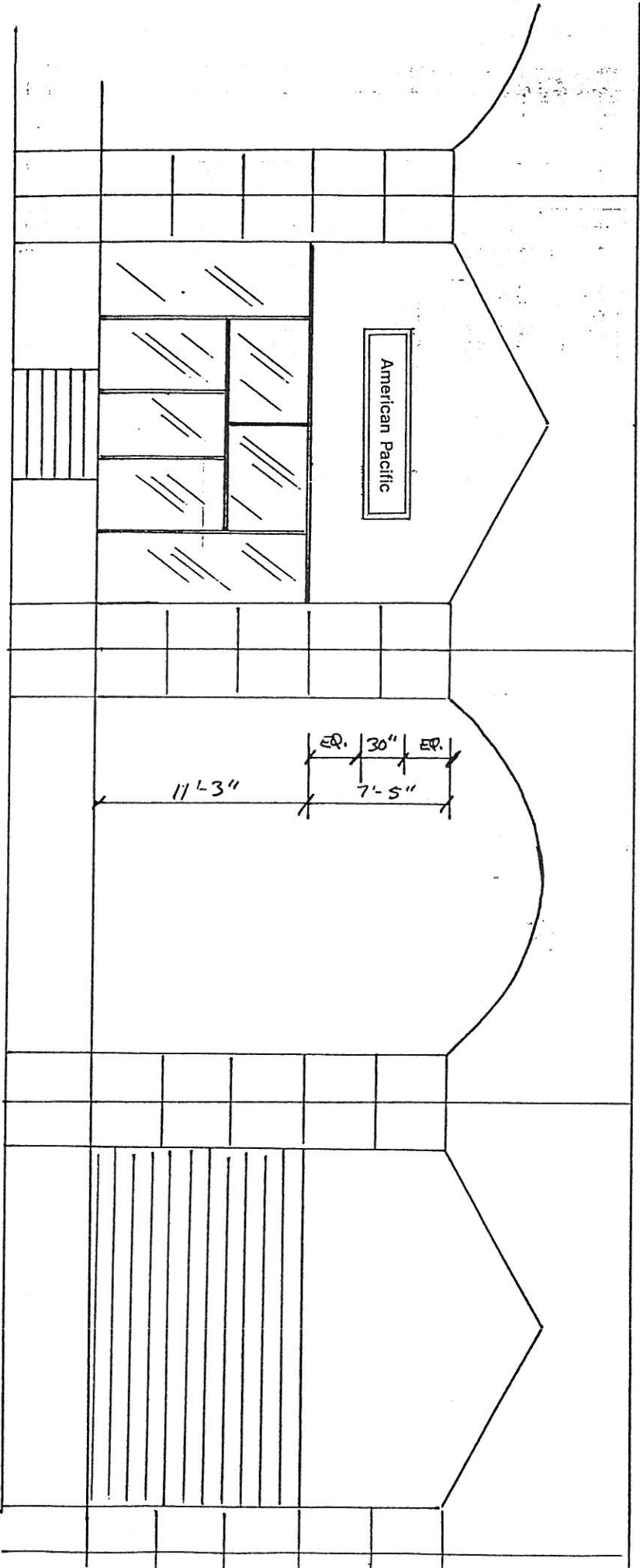
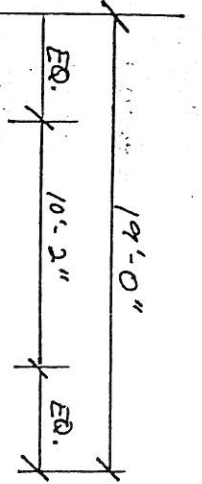
3" X 6" TUBULAR ALUM. FRAME
 TENANT SIGN PANEL 1/4" EXTRA PAINTED W/ VINYL DIE-CUT GRAPHICS. CHANGEABLE - REAM REMAINS INTACT.

FRAME : DARK BLUE #5095N TO MATCH MULLIONS
 SIGN FIELD : DARK GRAY #5441W
 SIGN REVEAL : LIGHT BLUE #5041
 SIGN LETTERING : DARK BLUE #5095

clarke & associates
 1607 E EDINGER O. SANTA ANA, CA.

TITLE:
 TENANT I.D. SIGN

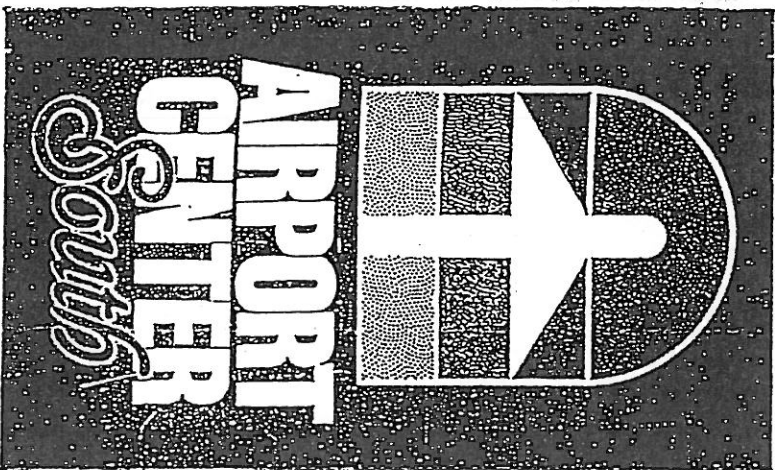
PROJECT	ALVARADO CENTER SOUTH	DATE	12/8/88
SCALE	1/6" = 1"	RECEIVED	
APPROVED BY		DEC 12 1988	
TOD ONTARIO			



Clarke & Associates
1607 E EDINGER D., SANTA ANA, CA.

TITLE:
TENANT I.D. SIGN

PROJECT AIRPORT CENTER SOUTH DATE 12/8/88
SCALE 1/8" = 1'-0" RECEIVED
APPROVED BY TCC-ONTARIO
DEC 12 1988



Trammell Crow Company

SOUTHMARK EQUITES CORP.	180
HARBOR DATA	190

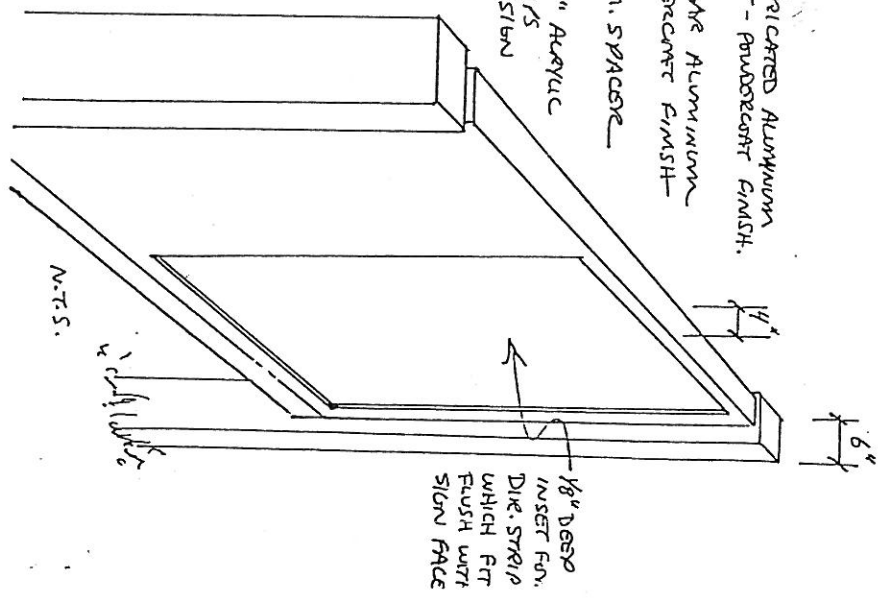
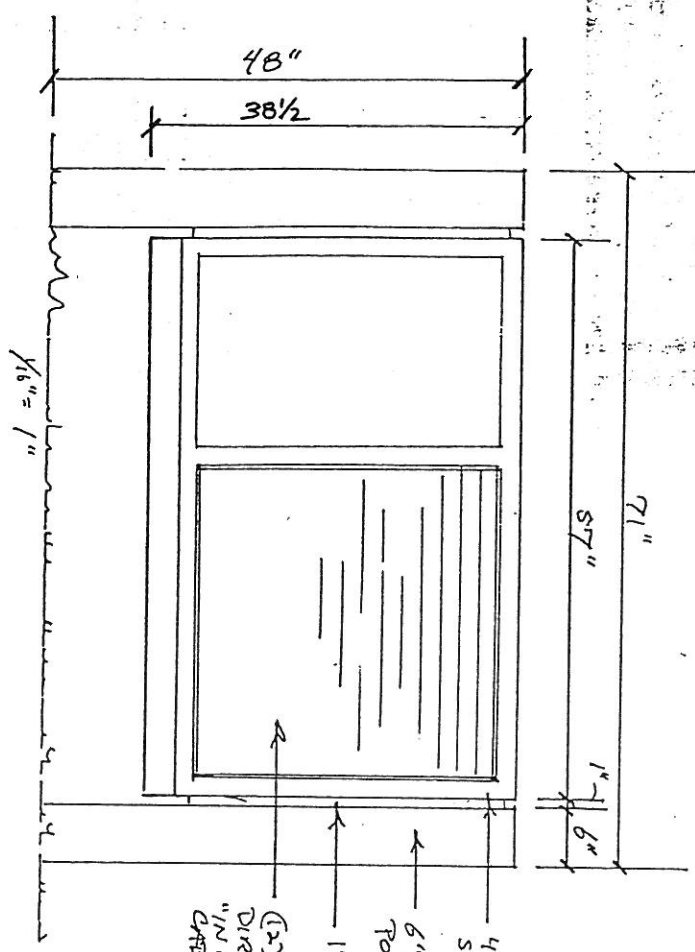
TITLE:

Movment
TENANT I.D. SIGN
LISTINGS

clarke & associates
1607 E EDINGER D. SANTA ANA, CA.

PROJECT AIRPORT CENTER
SCALE 1/8" = 1"
REVISION DATE 12/8/88

APPROVED BY
DEC 12 1988
TCC-ONTARIO



COLORS: POSTS & SIGN FRAME : DARK BLUE 5095N
 LOGO FIELD : DARK GRAY 5441W
 TENANT I.D. PANEL BACKGROUND : 5441W
 TENANT I.D. PANELS : DARK BLUE 5095N
 TENANT LETTERING : WHITE
 TRANSMIBL GROSS CO. FIELD STRIP : PMS 302C & 372C
 LOGO COLORS TO MATCH ACTUAL LOGO



clarke & associates
 1807 E EDINGER O., SANTA ANA, CA.

TITLE:
 MONUMENT TENANT LISTINGS

PROJECT	APRPORT CENTER SOUTH	DATE	12/8/88
SCALE	1" = 1'-0"	RECEIVED	
APPROVED BY		DEC 12 1988	
	TCC-ONTARIO		

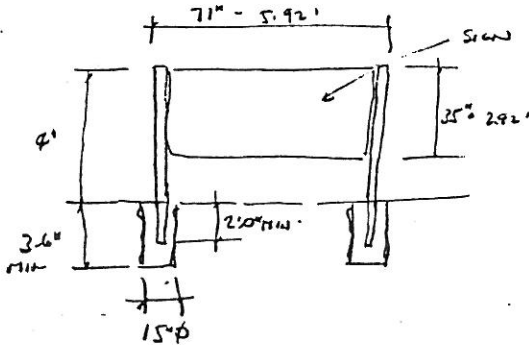
JOB T.C. ANIMAL AIRPORT CTR.

SHEET NO. 1

DATE Dec 984

DESIGNER eu

Sign



Wind $p = C_e C_g q_s F$

$C_e = 1.2$

$C_g = 1.3$

$q_s = 21 \times 1.3 = 27.3$

$P = 1.2 \times 1.2 \times 27.3 = 39.57 \text{ psf}$

$P = 39.57 \times 5.92 \times 2.08 = 425 \text{ lbs}$

Load/col. $= \frac{425}{2} = 213 \text{ lbs}$

$M_{col} = 213 \times 2.56 = 541 \text{ lb-in}$

$S_x = \frac{541 \times 12}{24,000 \times 1.33} = 0.20 \text{ in}^3$

$6 \times 6 \times 3/16 \quad S = 793$

TS
6 x 6 x 3/16
on bottom
as vertical support

FOUNDATION

$d = \frac{A}{2} \left(1 + \sqrt{1 + \frac{0.364}{A}} \right)$ $A = \frac{2.34 P}{s, b}$

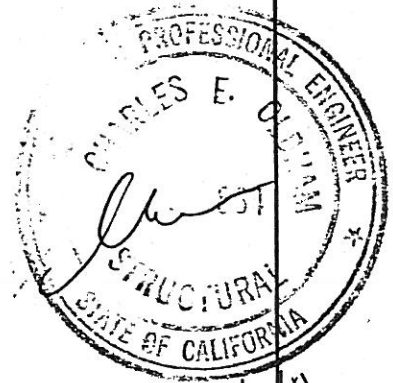
Assume $6 \times 6 \times 3/16$ O.C.B.A. $S_x = \frac{100 \times 2 \times 2.5}{3} = 233$

$A = \frac{2.34 \times 213}{233 \times 1.33} = 1.71$

$d = \frac{1.71}{2} \left(1 + \sqrt{1 + \frac{0.36 \times 2.56}{1.71}} \right)$

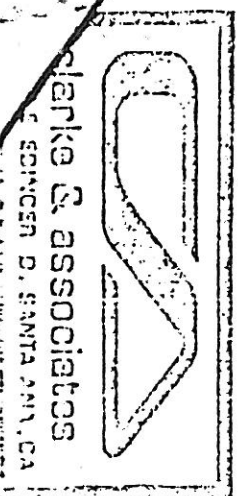
$= 3.19 \times 2.35$

USE 15" φ
X 3/16" O.C.B.A.
DIA. OR VERTICAL
SUPPORT



CY 12/31/88

DEC - 5 1988



TITLE:

POST/PANE TOWER LISTINGS

MIN

PROJECT

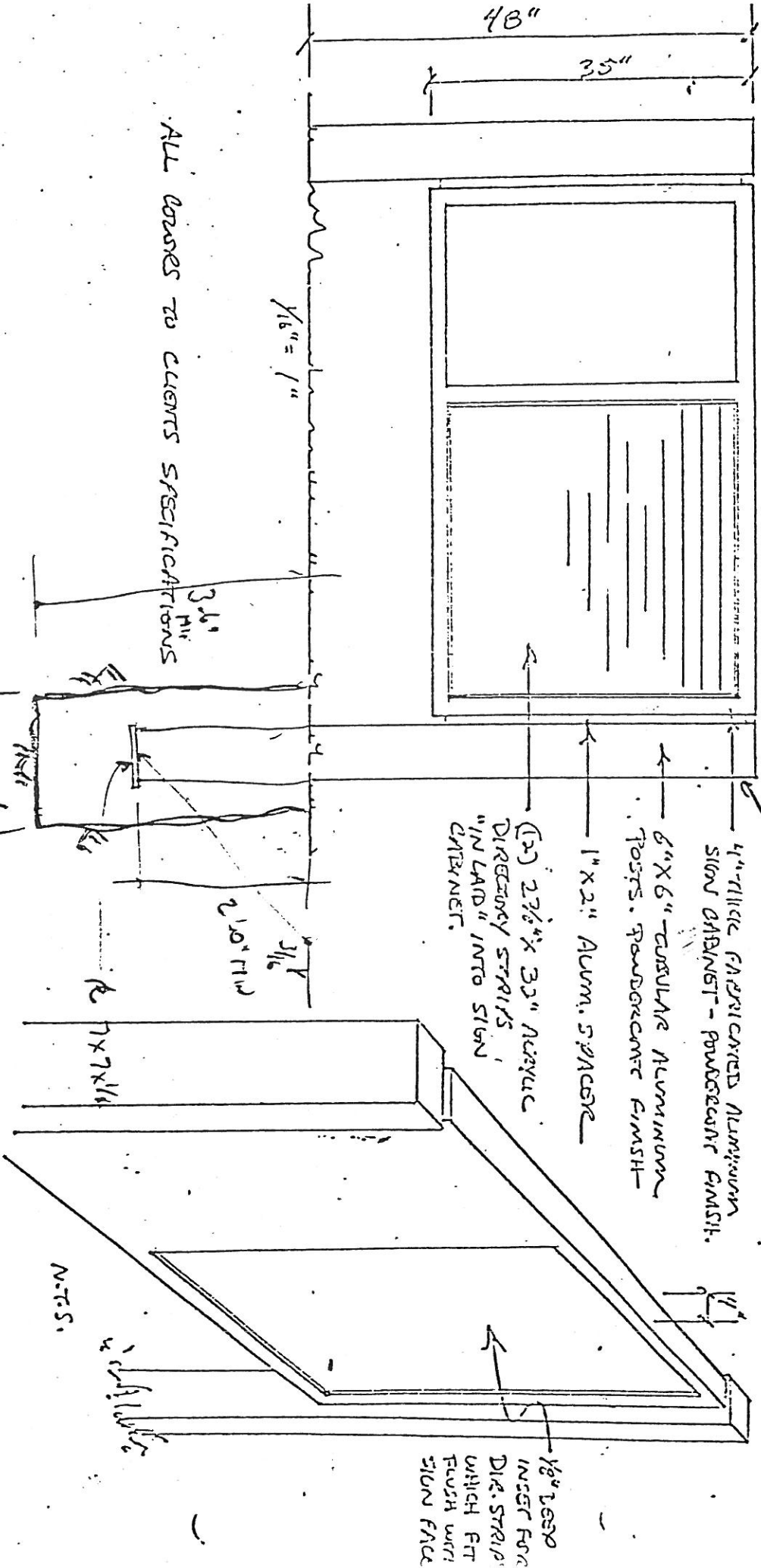
CLARKE & ASSOCIATES

DATE

1/1/88

SCALE

AS SHOWN



ALL DIMENSIONS TO CLIENTS SPECIFICATIONS

48"

35"

71"

57"

1" 6"

1/8" = 1"

3/16"

2 1/2"

3/16"

7" x 7 1/4"

T5
6" x 6" x 3/16"

4" THICK FABRICATED ALUMINUM SIGN CABINET - POWDERCOAT FINISH.

6" x 6" TUBULAR ALUMINUM POSTS. POWDERCOAT FINISH.

1" x 2" ALUM. SPACER

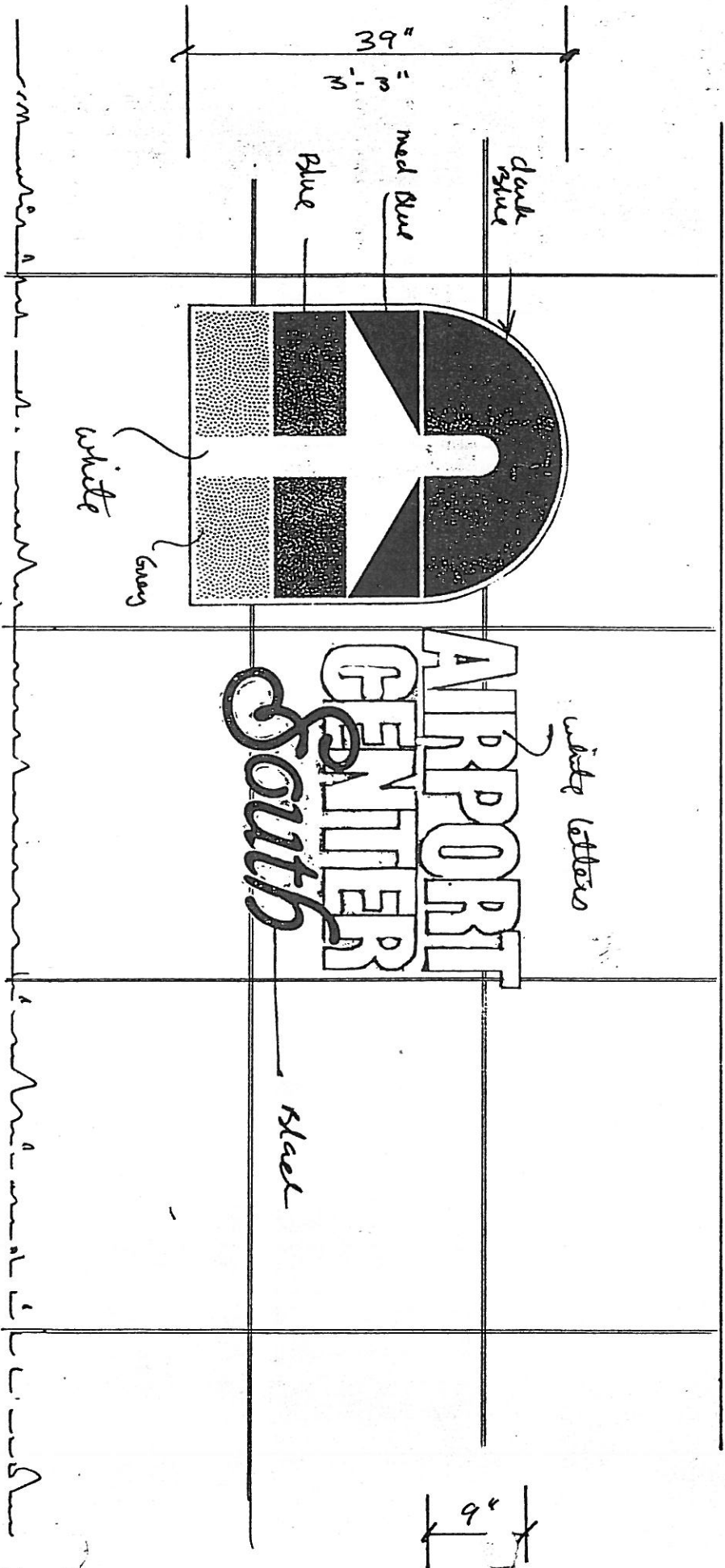
(2) 2 3/8" x 33" ALUMINUM DIRECTORY STRIPS

1/2" LAMP INTO SIGN CABINET.

1/8" LEAD INSERT FOR DIE STRIP WHICH FIT FLUSH WITH SIGN FACE

NOTES:

5'-10"



6'-0" WALL HEIGHT

NOTES:

- LOGO - BORDER & PLANS: 1/2"
- BACKGROUND: 1/2"
- LETTERS - AIRPORT CENTER: 1/2" ; SOUTH: 1/2"

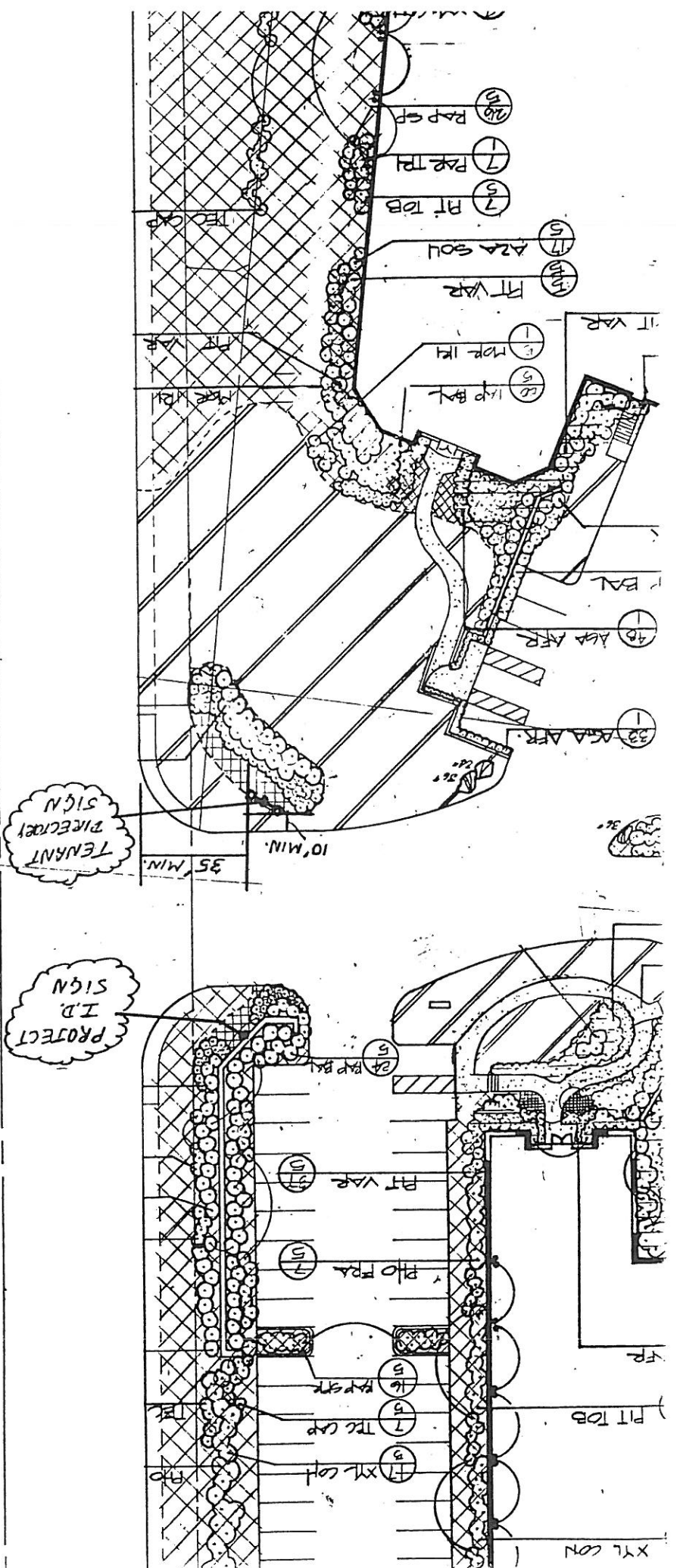
clarke & associates
1607 E EDINGER D., SANTA ANA, CA.

TITLE:
AIRPORT CENTER SIGN

PROJECT: TRAMMEL CREW DATE: 11/8/88

SCALE: 1/8" = 1"

APPROVED BY:



ARCHIBALD AVENUE

AIRPORT CENTER SOUTH
 ONTARIO, CALIFORNIA
TRAMMELL CROW COMPANY

PERIDIAN

Landscape Architecture • Planning
 17848 SKYPARK BOULEVARD • IRVINE, CA 92714 • (714) 261-5120

REVISION	DATE
Freestanding Sign Locations	12/14/88

Original site for which they were prepared & publication thereof is expressly limited to such use. Reproduction, publication or re-use by any method, in whole or in part without the express consent of the Peridian Group is prohibited. Title to the plans & specifications remain in the Peridian Group without prejudice. Visual contact with these