

# SIGN PROGRAM

PREPARED FOR:

517- 521 N EUCLID AVE ONTARIO, CA91762

APPROVED BY :

<b>PLANNING DEPT APPROVED</b>
Permit No. <u>PSGP22-007</u>
By: <u>[Signature]</u> <u>Elly A.</u>
Date: <u>5/31/23</u>

PERMITTED SIGNS ..... PAGE 3

SIGN LOCATION PLAN ..... PAGE 4

PRIMARY / FACADE SIGN

(BUSINESS IDENTITY SIGN TYPE A) ..... PAGE 5

REAR FACADE SIGN

(BUSINESS IDENTITY SIGN TYPE B)..... PAGE 6

TYPE A SIGNAGE DETAIL..... PAGE 7

TYPE B SIGNAGE DETAIL..... PAGE 8

PLANNING DEPT  
APPROVED

Permit No. PSGP 22-007

By: [Signature] Flyt.

Date: 5/21/23

<b>PLANNING DEPT</b> APPROVED	
Permit No.	PSG P22-007
By:	SGA Elysa
Date:	5/8/23

## PERMITTED SIGNS:

**PRIMARY / FACADE SIGN (BUSINESS IDENTITY SIGN )**

**REAR FACADE SIGN (BUSINESS IDENTITY SIGN )**

## TYPE STYLES & LOGOS

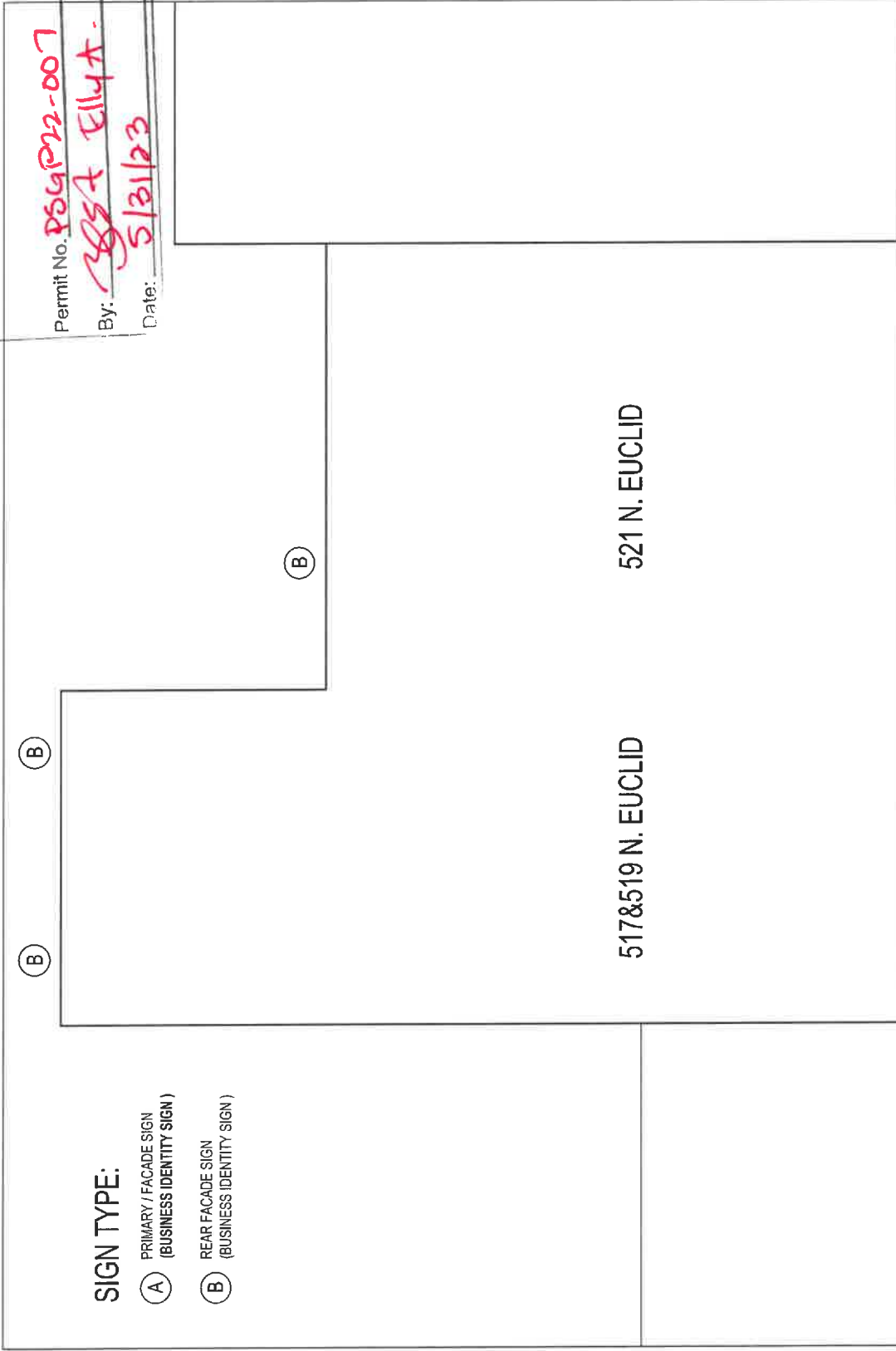
SIGN LETTERING SHOULD BE COMBINED WITH OTHER GRAPHIC AND / OR DIMENSIONAL ELEMENTS DENOTING THE TYPE OF BUSINESS. THE TYPEFACE MAY BE ARRANGED IN ONE(1) OR TWO(2) LINES OF COPY AND MAY CONSIST OF UPPER AND LOWER CASE LETTERS

PLANNING DEPT  
APPROVED

Permit No. PSGPR22-007  
By: Christa Ellyat  
Date: 5/31/23

**SIGN TYPE:**

- (A) PRIMARY / FACADE SIGN  
(BUSINESS IDENTITY SIGN)
- (B) REAR FACADE SIGN  
(BUSINESS IDENTITY SIGN)



SIDEWALK

(A) (A) (A) (A)  
102'-0"

GENERAL LOCATION OF ALL SIGNS

SIDEWALK

EUCLID AVE.



SIGN PROGRAM: LOCATION OF SIGNAGE

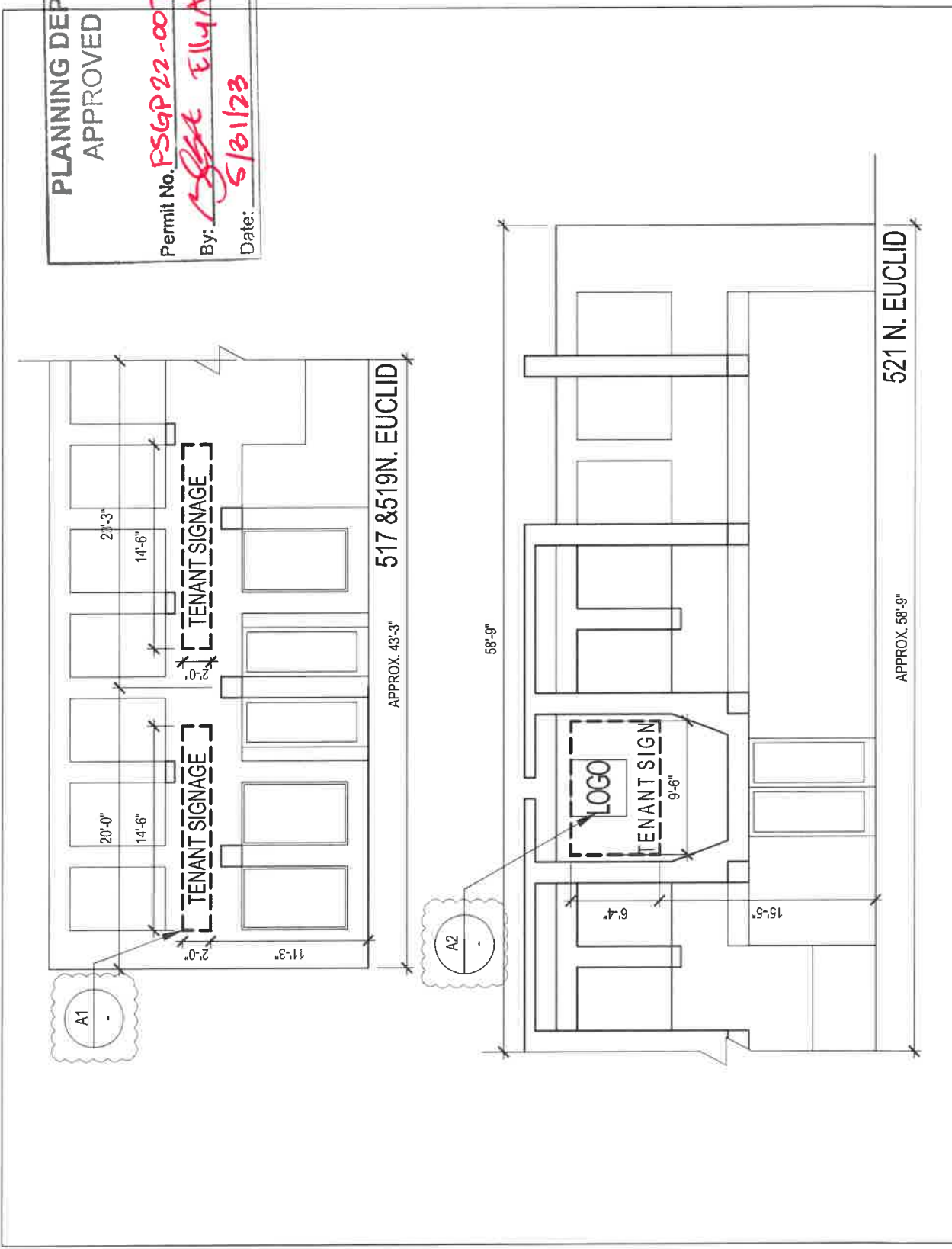
517-521 N EUCLID AVE ONTARIO 4

PLANNING DEPT  
APPROVED

Permit No. **PSGP22-007**

By: **Steph Elyat**

Date: **5/31/23**



A: PRIMARY / FACADE SIGN (STREET)

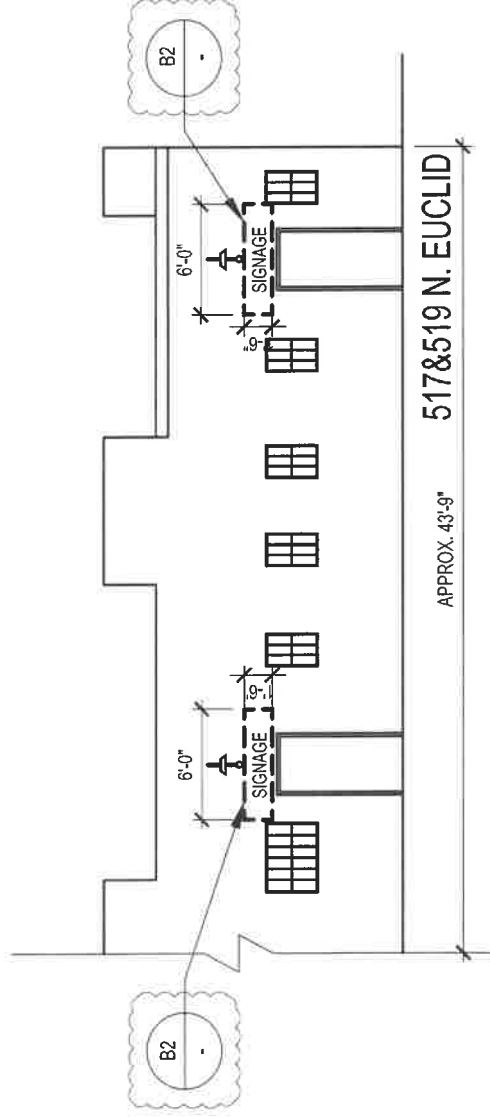
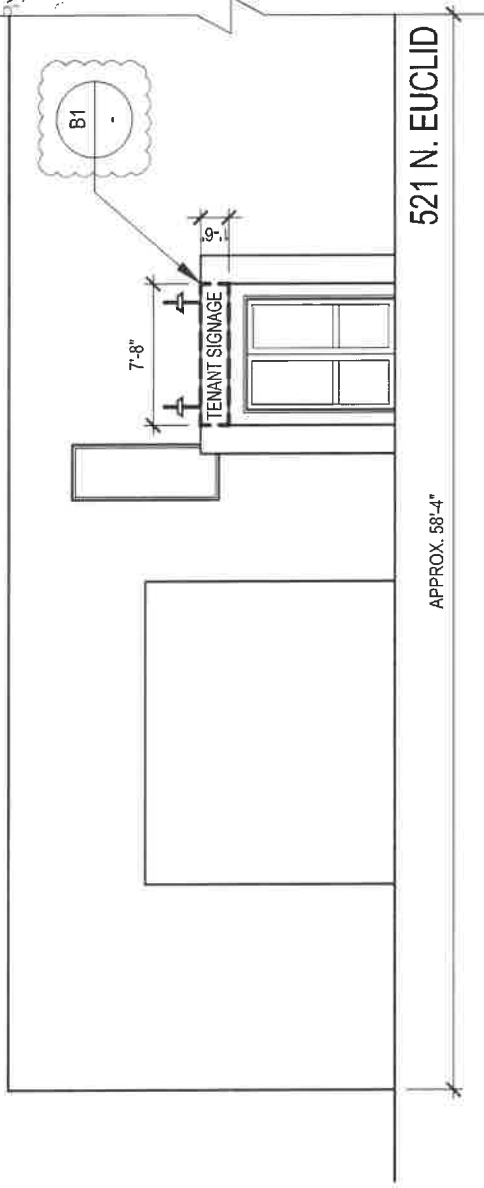
517-521 N EUCLID AVE ONTARIO

PLANNING DEPT  
APPROVED

Permit No. **PSGP22-007**

By: **ASST. Mgr. T. H. A.**

Date: **5/21/23**



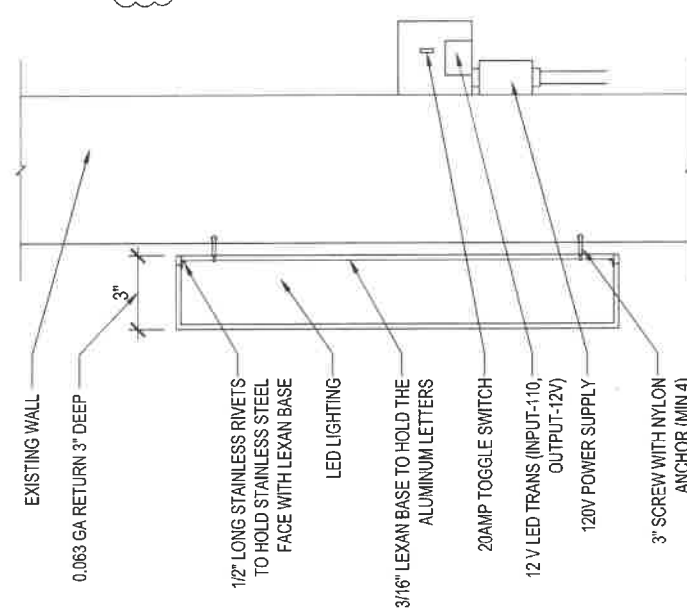
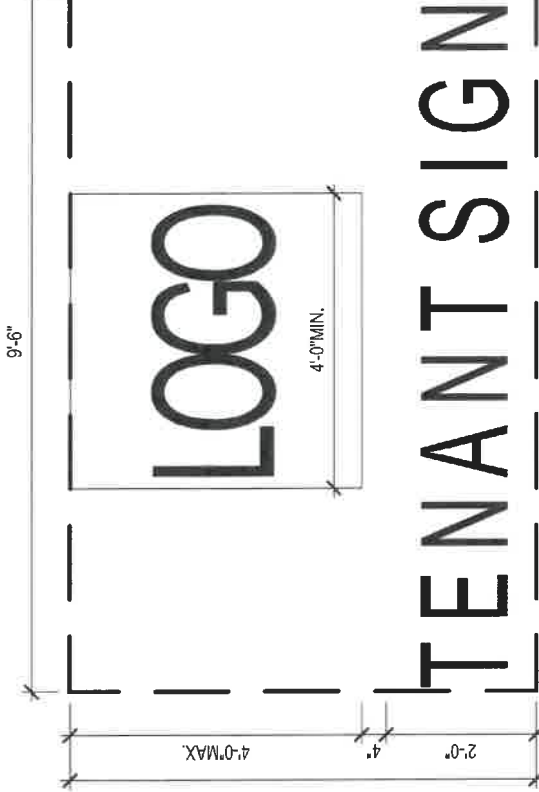
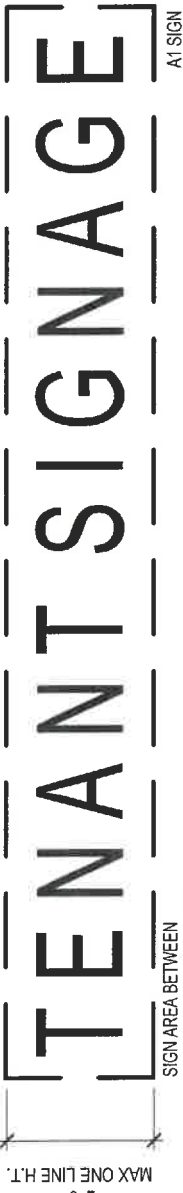
B: REAR FACADE SIGN (PARKING)

517 - 521 N EUCLID AVE ONTARIO

6

PLANNING DEPT  
APPROVED

Permit No. **PSCAP22-007**  
By: **Elly A.**  
Date: **5/31/23**



NOTE:  
ALL SIGN DESIGNS TO CONFORM TO CITY OF ONTARIO SIGN DESIGN GUIDELINE: RETAIL DISTRICT  
(2018 1950'S STYLES SUB-DISTRICT)  
NO EXISTING SIGNS ON THE BUILDING

**SPECIFICATIONS:**

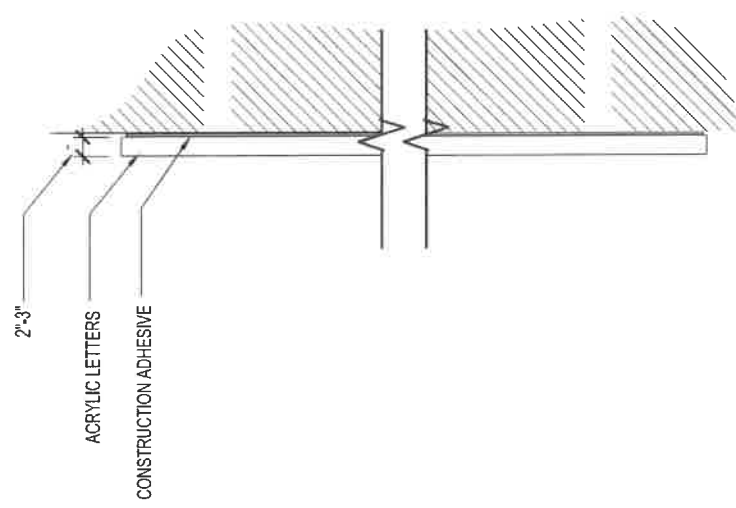
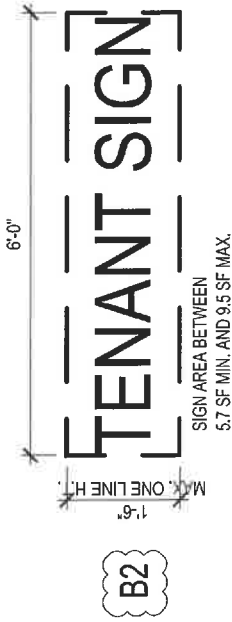
- PURPOSE: TO IDENTIFY TENANT, EAST ELEVATION
- LOCATION: SEE PAGE#4
- SIGN TYPE: FRONT LIT CHANNEL LETTER
- COPY: ONE OR TWO LINES OF COPY
- STACKED COPY: MINIMUM 4" SPACE BETWEEN LINE OF COPY
- COLOR: COLOR OF LETTERS SHOULD BE BLACK, BLACK WITH GOLD ACCENT, SIGN MAY INCORPORATE REGIONALLY AND NATIONALLY RECOGNIZED LOGO COLOR, SUBJECT TO LANDLORD AND CITY APPROVAL
- FONT: ITC AVANT GARDE
- DISTANCE BETWEEN WALL & SIGN: 12"
- LETTER HEIGHT: 12" MIN. AND 24" MAX. FOR ONE LINE OF COPY, 12" MIN. AND 18" MAX. FOR MULTIPLE LINE OF COPY WHEN A LOGO IS NOT INCORPORATED INTO SIGNAGE
- LOGO: HEIGHT 48" MAX. WIDTH 48" MIN. LOGO SHOULD NOT EXCEED 16 SF

PLANNING DEPT  
APPROVED

Permit No. POGP 22-007

By: SSA Ely A.

5/31/23



SPECIFICATIONS:

- PURPOSE: TO IDENTIFY BUSINESS NAMES
- MAXIMUM NUMBER: BUSINESS SIGN PERMITTED SUBJECT TO LANDLORD AND CITY APPROVAL.
- SIGN TYPE: ACRYLIC FOR LETTER, NON-LIT SUBJECT TO LANDLORD AND CITY APPROVAL
- MATERIAL: ACRYLIC
- COLOR: COLOR OF LETTERS SHOULD BE BLACK, BLACK WITH GOLD ACCENT. SIGN MAY INCORPORATE REGIONALLY AND NATIONALLY RECOGNIZED LOGO COLOR, SUBJECT TO LANDLORD AND CITY APPROVAL.
- FONT: ITC AVANT GARDE
- LETTER HEIGHT: 9" MIN. AND 18" MAX. FOR ONE LINE OF COPY.

NOTE:  
ALL SIGN DESIGNS TO CONFORM TO CITY OF ONTARIO SIGN DESIGN GUIDELINE: RETAIL DISTRICT  
(2C.8 1950'S STYLES SUB-DISTRICT )  
NO EXISTING SIGNS ON THE BUILDING