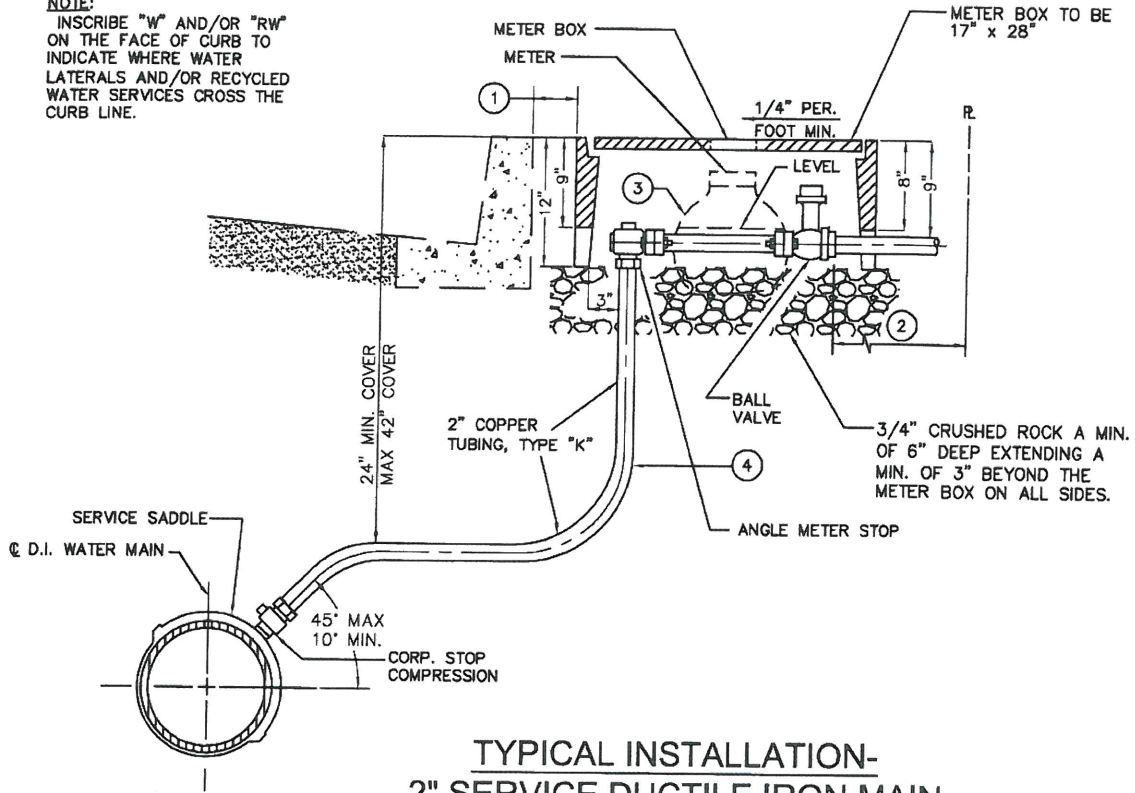
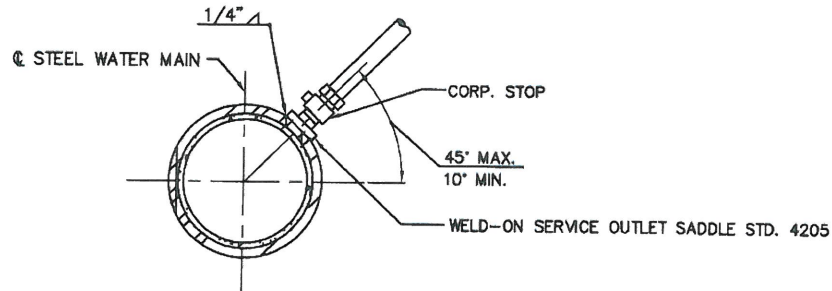


NOTE:  
 INSCRIBE "W" AND/OR "RW"  
 ON THE FACE OF CURB TO  
 INDICATE WHERE WATER  
 LATERALS AND/OR RECYCLED  
 WATER SERVICES CROSS THE  
 CURB LINE.



**TYPICAL INSTALLATION-  
 2" SERVICE DUCTILE IRON MAIN**



**TYPICAL INSTALLATION-2" SERVICE STEEL MAIN**

**NOTES:**

- ① FRONT OF METER BOX TO BE LOCATED 6" BEHIND BACK OF WALK FOR SIDEWALK ADJACENT TO CURB AND 4" BACK OF CURB FOR SIDEWALK ADJACENT TO RIGHT OF WAY, UNLESS OTHERWISE SPECIFIED.
- ② RUN COPPER, TYPE "K", SERVICE TO PROPERTY LINE OR AS REQUIRED METER SIZE X 12" LONG BRASS NIPPLE.
- ③ METER (1 1/2" OR 2") SHALL BE SUPPLIED BY THE CITY AT CONTRACTOR'S EXPENSE, UNLESS OTHERWISE APPROVED.
- ④ 2" COPPER TUBING, TYPE "K", FROM CORP. STOP TO ANGLE METER STOP (ONE CONTINUOUS PIECE OF PIPE). SLEEVE TUBING REQUIRED IN CORROSIVE SOIL AREAS.



APPROVED BY:		10.5.15	
<i>Louis Abi-Younes</i>		44485	
LOUIS ABI-YOUNES, CITY ENGINEER	RCE	DATE	
RECOMMENDED:		9/17/15	
<i>Dennis Meija</i>		62268	
DENNIS MEIJA, UTILITIES ENGINEERING DIRECTOR	RCE	DATE	
REV	DESCRIPTION	BY	APP'D DATE

CITY OF ONTARIO	
2" WATER SERVICE	STANDARD DRAWING NUMBER
	<b>4202</b>