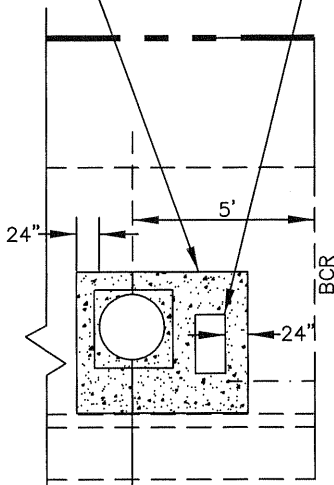


INSTALL PCC SLAB PER CITY STANDARD DRAWING SIDEWALK CONSTRUCTION ADJACENT TO CURB

INSTALL # 3 1/2 PULL BOX



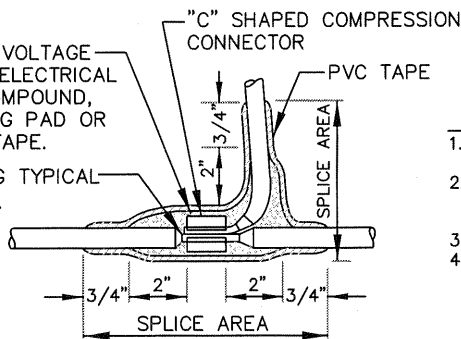
PLAN VIEW

NO. 3 1/2 PULL BOX WITH FUSED DISCONNECT (SEE DETAIL TYPICAL FUSEHOLDER INSTALLATION). INSTALL TWO 3/8" BRASS, NYLON OR STAINLESS STEEL LID LOCKS AND 2"(MIN.) GROUT IN THE BOTTOM OF BOX.

FEED CONDUIT  
1 1/2" RIGID METALLIC CONDUIT OR 1 1/2" PVC SCHEDULE 80 PVC CONDUIT

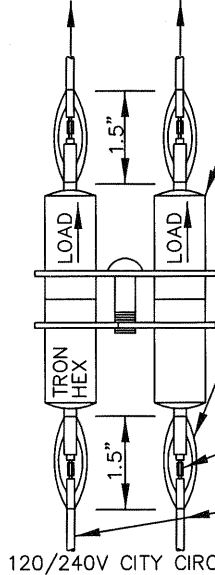
FOR LOW VOLTAGE CIRCUITS ELECTRICAL FILLER COMPOUND, INSULATING PAD OR RUBBER TAPE.

PENCILING TYPICAL 1/4" MIN.



TYPE "C" SPLICE

TO LUMINAIRE



120/240V CITY CIRCUIT TYPICAL FUSEHOLDER INSTALLATION

FUSEHOLDER TRON-HEX (240V CIRCUIT) OR TRON-HEB, NOT PICTURED, (120V CIRCUIT) WITH KTK FUSE, BUSSMAN MFG. DIV. OR EQUAL. FUSE SHALL BE RATED AT 20 AMPS. FOR 120 VOLT AND 10 AMPS FOR 240 VOLT

COMPLETELY COVER THE SPLICE AREA WITH AN ELECTRICAL INSULATING COATING AND ALLOW TO DRY APPLY 3 LAYERS OF MINN. MINING & MFG. CO. ELECTRICAL TAPE NO. 23 AND 3 LAYERS OF TAPE NO. 88 OR EQUAL (TYPICAL 4 PL.).

COMPLETELY COVER THE SPLICE AREA WITH AN ELECTRICAL INSULATING COATING AND ALLOW TO DRY

'C' SHAPED COMPRESSION CONNECTOR

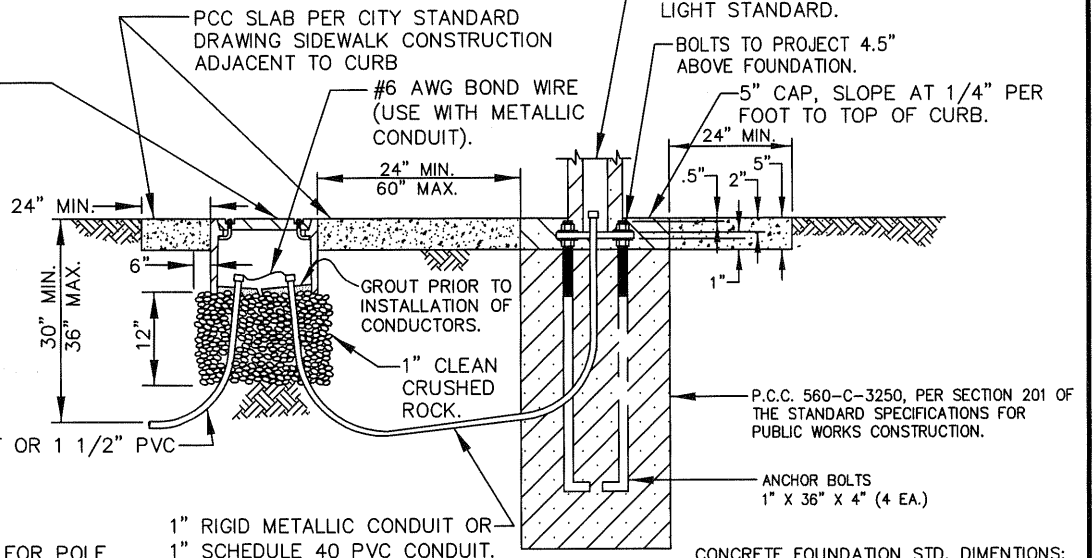
SERVICE CONDUCTORS IF SERVICE IS DIRECT FROM EDISON USING ALUMINUM SERVICE CONDUCTIOS INSTALL 12" #8 AWG PIGTAIL.

NOTE:

IN COMMERCIAL AREAS THE FUSEHOLDER SHALL BE PLACED IN THE STANDARD HANDHOLE AND THE PULL BOX LID GROUTED CLOSED.

METHOD "B"

1. COMPLETELY COVER THE SPLICE AREA WITH ELECTRICAL INSULATING COATING AND ALLOW TO DRY.
2. APPLY 2 LAYERS OF ELECTRICAL INSULATING PAD WITH MINIMUM THICKNESS OF 4mm EACH LAYER OR 2 LAYERS, HALF LAPPED, SYNTHETIC OIL RESISTANT, SELF FUSING RUBBER TAPE.
3. APPLY 3 LAYERS, HALF LAPPED, POLYVINYL CHLORIDE TAPE.
4. COVER ENTIRE SPLICE WITH ELECTRICAL INSULATING COATING AND ALLOW TO DRY.



TYPICAL FOUNDATION AND PULLBOX INSTALLATION

CONCRETE FOUNDATION STD. DIMENSIONS:  
A&B = 30" X 30" X 42"  
C = 30" X 30" X 48"



APPROVED BY: *John P. Sullivan* 24079 8/08/06  
JOHN P. SULLIVAN CITY ENGINEER RCE DATE

RECOMMENDED: *Steve A. Davis* 2013 8/07/06  
TRAFFIC/TRANSPORTATION MANAGER TE DATE

REV	DESCRIPTION	BY	APP'D	DATE

CITY OF ONTARIO

STREET LIGHT INSTALLATION DETAIL

STANDARD DRAWING NUMBER **5102**