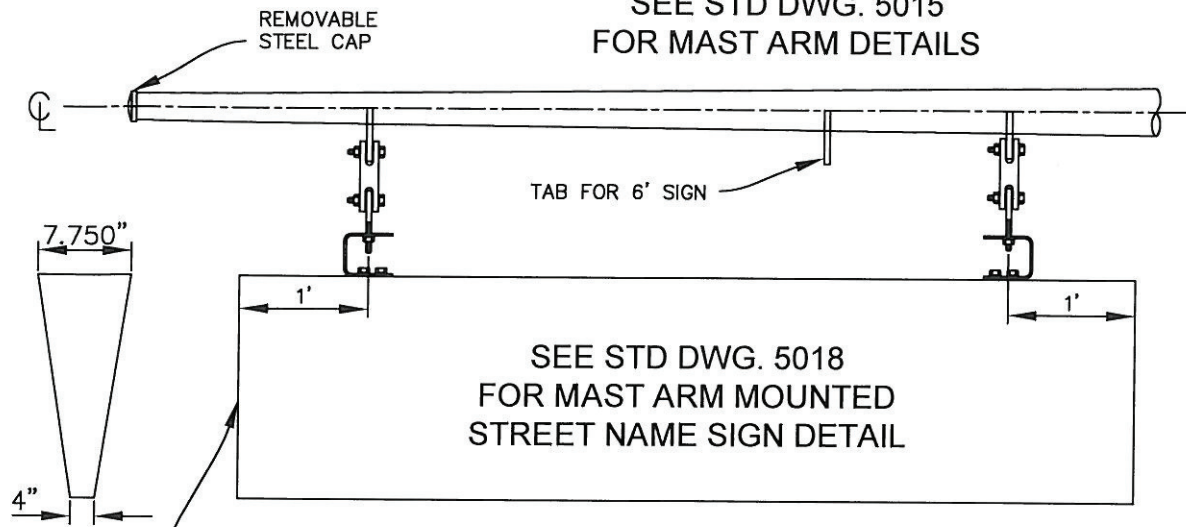


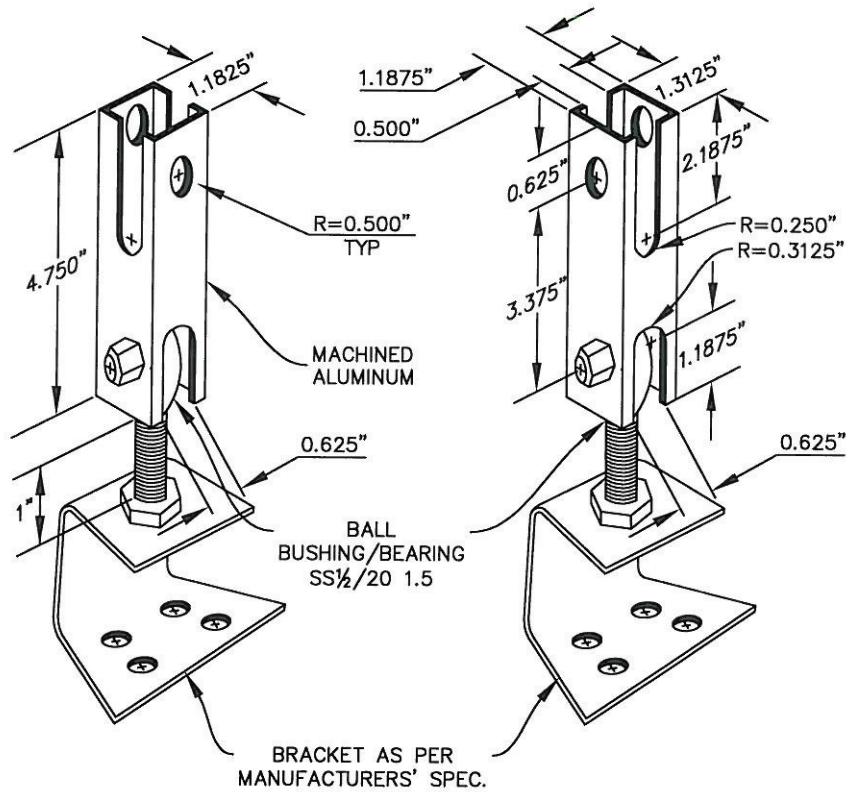
SEE STD DWG. 5015  
FOR MAST ARM DETAILS



SEE STD DWG. 5018  
FOR MAST ARM MOUNTED  
STREET NAME SIGN DETAIL

TAPERED REFLECTIVE STREET NAME SIGN AS PER SAFEWAY SIGN COMPANY SSG-T

USE FOR IN-LINE TABS



USE FOR PERPENDICULAR TABS

ONTARIO MOUNTING HARDWARE



APPROVED BY:				
<i>Louis B. Abi-Younes</i>		44485	8.7.14	
LOUIS B. ABI-YOUNES, CITY ENGINEER		RCE	DATE	
RECOMMENDED:				
<i>Thomas A. Dan</i>		2013	8/7/14	
TOM DANNA, TRAFFIC/TRANSPORTATION MANAGER		TE	DATE	
REV	DESCRIPTION	BY	APP'D	DATE

CITY OF ONTARIO

MAST ARM MOUNTED  
REFLECTIVE  
STREET NAME SIGN

STANDARD  
DRAWING  
NUMBER

**5017**