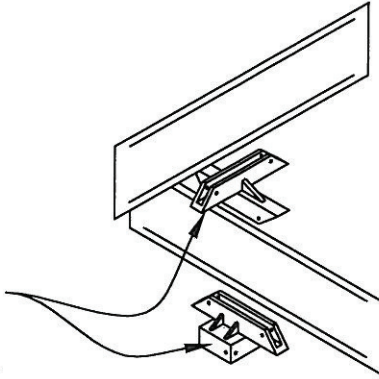
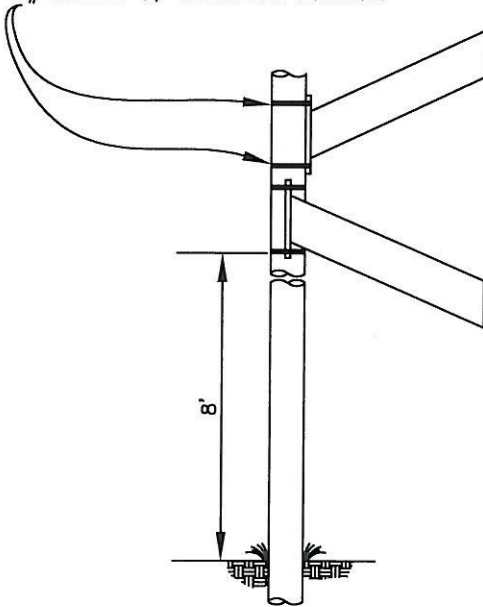


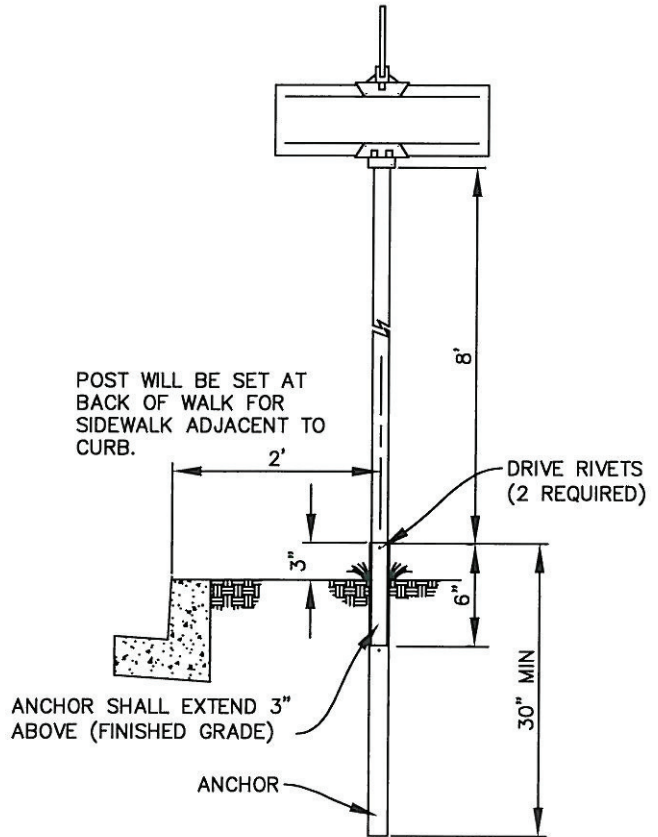
ZUMAR, STYLE 850 LONG WITH SET SCREWS. 90 DEGREE ALUMINUM EXTRUDED CROSS PIECE, AND POST CAP FOR A 2" SQUARE TUBE. SLOT 5 1/4" LONG, OR APPROVED EQUAL.



- # C25699 EAR LOCKET BUCKLES.
- # D021 BAND-IT 1 BOLT FLARED LEG BRACKET
- # 730 SNS BRACKET FOR 9" BLADE (LIGHT STANDARD MOUNT)
- # C20699 3/4" STAINLESS BANDING



POST WILL BE SET AT BACK OF WALK FOR SIDEWALK ADJACENT TO CURB.



POST MATERIALS

- 1) POST SHALL BE 20F-12-2X12 SQUARE TUBE, GALVANIZED FINISH AND (QUICK-PUNCH) HOLES, OR APPROVED EQUAL.
- 2) ANCHOR SHALL BE 25K125-2.5 (HEAVY DUTY) PREDRILLED ANCHOR OR APPROVED EQUAL.
- 3) DRIVE RIVETS SHALL BE 3/8" GRIP X 3/4" LENGTH OR APPROVED EQUAL.

STREET LIGHT POLE MOUNTING

- 1) BLADES STAGGERED AND FACING AWAY FROM CURB FACE.

See Std Dwg. 5005 for Legend and Background Details.



APPROVED BY:				
<i>Louis B. Abi-Younes</i>		44485	8/7/14	
LOUIS B. ABI-YOUNES, CITY ENGINEER		RCE	DATE	
RECOMMENDED:				
<i>Tom Danna</i>		2013	8/7/14	
TOM DANNA, TRAFFIC/TRANSPORTATION MANAGER		TE	DATE	
REV	DESCRIPTION	BY	APP'D	DATE

CITY OF ONTARIO	
POST MOUNTED STREET NAME SIGN	STANDARD DRAWING NUMBER 5001