

OFF-SITE FLOWS FROM CITY OF UPLAND  
 4000' x 100' @ 1.5' CFS  
 4000' x 200' @ 3.0' CFS  
 4000' x 300' @ 4.5' CFS  
 4000' x 400' @ 6.0' CFS

TO CITY OF MONTCLAIR SAN BERNARDINO AVE STORM DRAIN

FUTURE STORM DRAIN FOR CITY OF CHINO MASTER PLAN (SYSTEM 20)

CHINO STORM DRAIN

MAGNOLIA STORM DRAIN

SULTANA CYPRESS STORM DRAIN

CYPRESS CHANNEL

GROVE AVE BASIN

ELY BASINS

FRANCIS ST STORM DRAIN

RIVERSIDE DR STORM DRAIN 2

LOWER CUCAMONGA SPREADING GROUNDS

ONTARIO INTERNATIONAL

**LEGEND**

- COUNTY LIMITS
- CITY LIMITS
- PLANNED STORM DRAIN, SIZE AND LINE ID
- DRAINAGE AREA BOUNDARY
- DRAINAGE SYSTEM BOUNDARY
- MINOR DRAINAGE BOUNDARY
- (X) EXISTING CITY STORM DRAIN AND SIZE (IN INCHES)
- (X) EXISTING CITY OPEN CHANNEL
- (X) EXISTING COUNTY STORM DRAIN AND SIZE (IN INCHES)
- (X) EXISTING CALTRANS STORM DRAIN
- (X) EXISTING NEIGHBORING CITIES STORM DRAIN AND SIZE (IN INCHES)
- (X) FUTURE NEIGHBORING CITIES STORM DRAIN AND SIZE
- EXISTING DETENTION BASIN

DRAINAGE AREA #

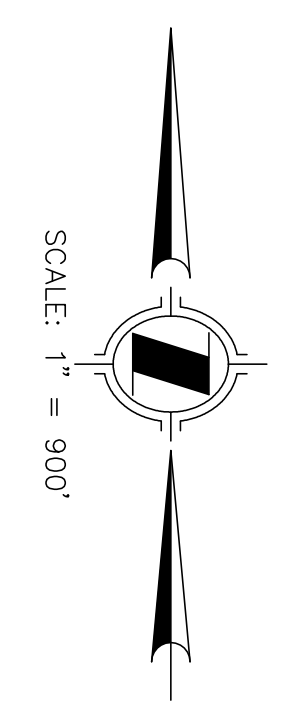
DRAINAGE SYSTEM NAME  
 WLKR-XII-3 SYSTEM IDENTIFICATION

DRAINAGE AREA NUMBER  
 LINE NUMBER

AREA DESIGNATION  
 AREA ACREAGE (IN ACRES)

PEAK FLOW RATE  
 AREA (IN ACRES)  
 NODE NO.

Q10 = 861.0cfs  
 Q25 = 981.1cfs  
 Q100 = 1213.7cfs  
 833.9 A/C  
 NODE 350



MARCH 2012

REVISIONS

CITY OF ONTARIO  
 MASTER PLAN OF DRAINAGE

HYDROLOGY MAP  
 OLD MODEL COLONY-WEST

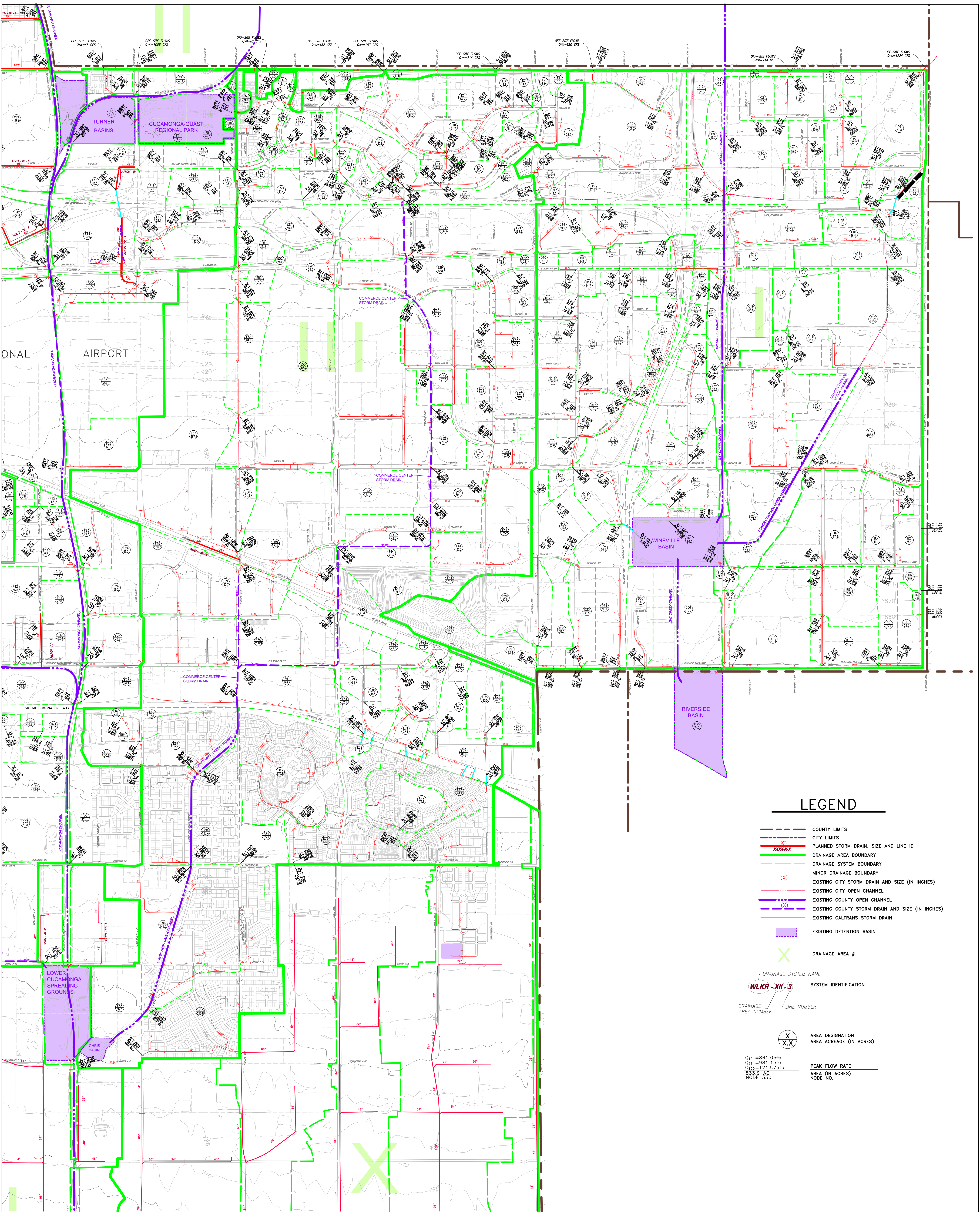
**HUNSAKER & ASSOCIATES**  
 IRVINE, INC.  
 PLANNING • ENGINEERING • SURVEYING  
 Three Hughes • Irvine, CA 92618 • PH: (949) 583-1010 • FX: (949) 583-0759

DATED: 7/10/2012 2:49 PM

1 OF 3

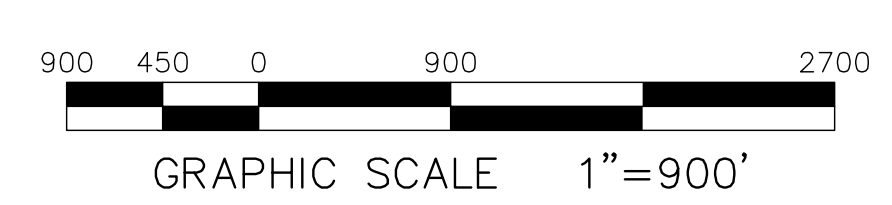
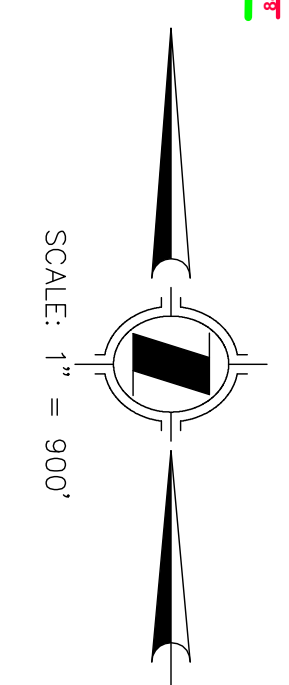
F:\0641\Engineering\SY\_SD Master Plan\RpLSD Master Plan\HYDROLOGY MAPS\HYDROLOGY MAP-OMC-ALL.dwg





**LEGEND**

- COUNTY LIMITS
- CITY LIMITS
- PLANNED STORM DRAIN, SIZE AND LINE ID
- DRAINAGE AREA BOUNDARY
- DRAINAGE SYSTEM BOUNDARY
- MINOR DRAINAGE BOUNDARY
- (X) EXISTING CITY STORM DRAIN AND SIZE (IN INCHES)
- (X) EXISTING CITY OPEN CHANNEL
- (X) EXISTING COUNTY OPEN CHANNEL
- (X) EXISTING COUNTY STORM DRAIN AND SIZE (IN INCHES)
- (X) EXISTING CALTRANS STORM DRAIN
- EXISTING DETENTION BASIN
- X DRAINAGE AREA #
- DRAINAGE SYSTEM NAME
- WLKR-XII-3 SYSTEM IDENTIFICATION
- DRAINAGE AREA NUMBER
- LINE NUMBER
- (X) AREA DESIGNATION
- (X) AREA ACREAGE (IN ACRES)
- Q<sub>10</sub> = 861.0cfs PEAK FLOW RATE
- Q<sub>25</sub> = 981.1cfs
- Q<sub>50</sub> = 1213.7cfs
- 833.9 AC AREA (IN ACRES)
- NODE 350 NODE NO.



DATED: 3/15/2012 10:33 AM

MARCH 2012

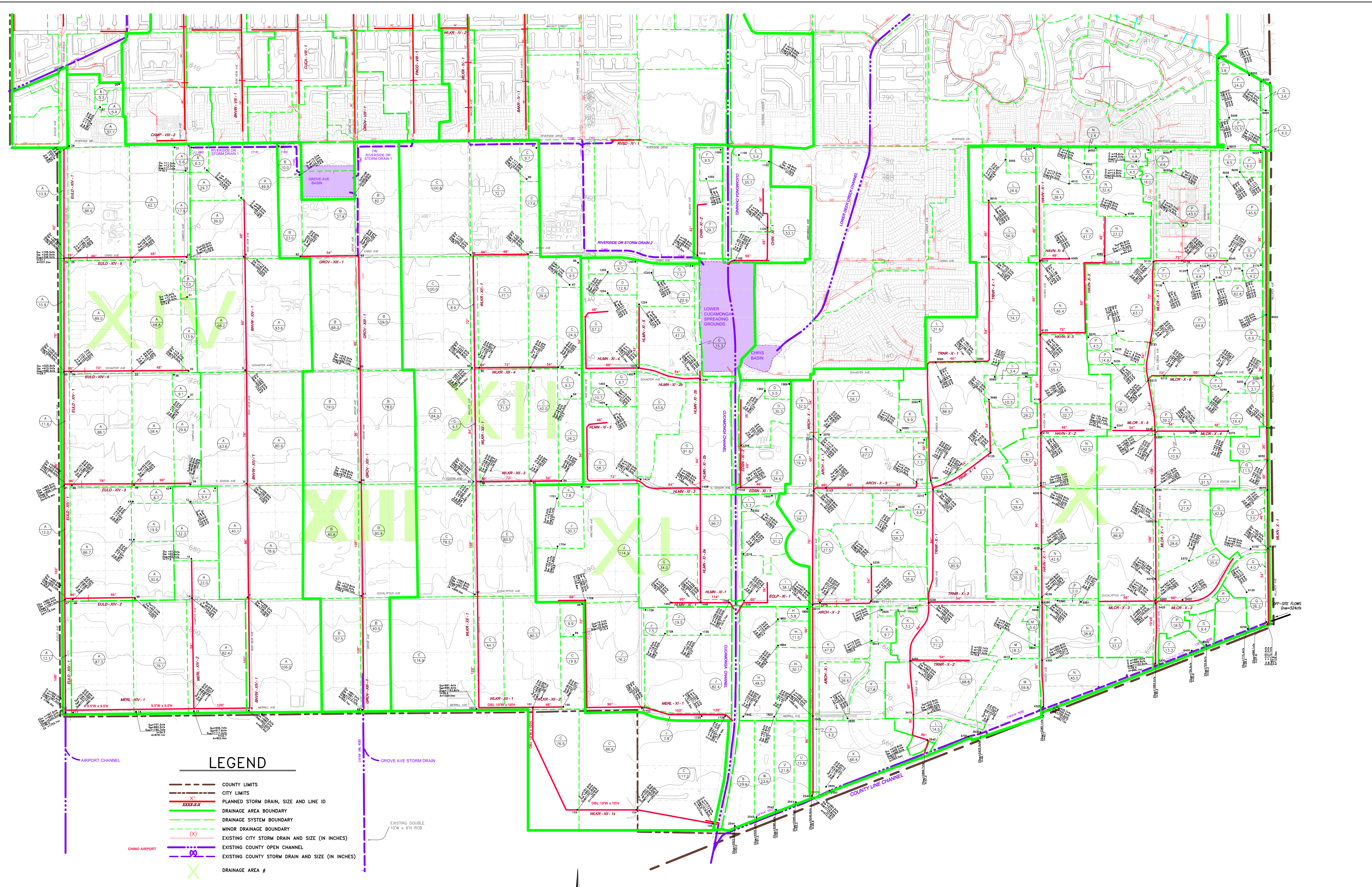
REVISIONS	

**HUNSAKER & ASSOCIATES**  
 IRVINE, INC.  
 PLANNING • ENGINEERING • SURVEYING  
 Three Hughes • Irvine, CA 92618 • PH: (949) 583-1010 • FX: (949) 583-0759

CITY OF ONTARIO  
 MASTER PLAN OF DRAINAGE  
 HYDROLOGY MAP  
 OLD MODEL COLONY-EAST

F:\0641\Engineering\SY\_SD Master Plan\RpL\_SD Master Plan\HYDROLOGY MAPS\HYDROLOGY MAP-OMC-ALL.dwg

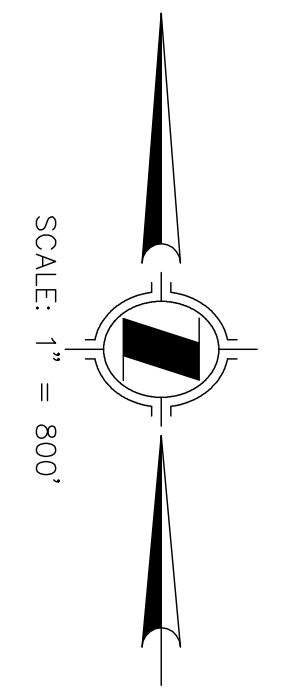




**LEGEND**

- COUNTY LIMITS
- CITY LIMITS
- PLANNED STORM DRAIN, SIZE AND LINE ID
- DRAINAGE AREA BOUNDARY
- DRAINAGE SYSTEM BOUNDARY
- MINOR DRAINAGE BOUNDARY
- EXISTING CITY STORM DRAIN AND SIZE (IN INCHES)
- EXISTING COUNTY OPEN CHANNEL
- EXISTING COUNTY STORM DRAIN AND SIZE (IN INCHES)
- X DRAINAGE AREA #
- DRAINAGE SYSTEM NAME
- WLKR-XII-3 SYSTEM IDENTIFICATION
- DRAINAGE AREA NUMBER
- X-X-X-X AREA DESIGNATION  
AREA ACREAGE (IN ACRES)
- PEAK FLOW RATE
- TIME OF CONCENTRATION
- AREA

Q10 = 861.0cfs  
 Q50 = 881.1cfs  
 Q100 = 1213.7cfs  
 T = 36.1  
 A = 342.7ac



GRAPHIC SCALE 1"=800'

<p>MARCH 2012</p>	
<p>REVISIONS</p>	<p>CITY OF ONTARIO          MASTER PLAN OF DRAINAGE</p>
<p>HUNSAKER &amp; ASSOCIATES          IRVINE, INC.          PLANNING ■ ENGINEERING ■ SURVEYING          Three Hughes • Irvine, CA 92618 • PH: (949) 583-1010 • FX: (949) 583-0759</p>	<p>HYDROLOGY MAP          NEW MODEL COLONY</p>
<p>3 OF 3</p>	